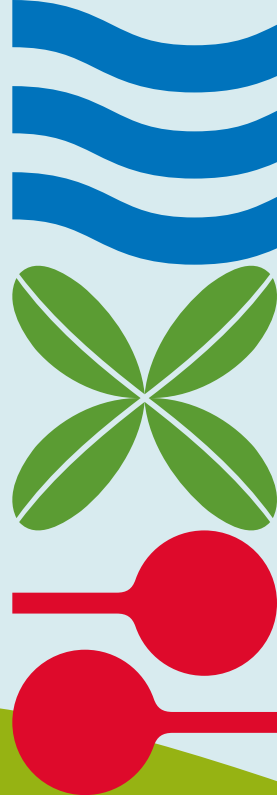


Te whakarite i tō rawa tūwāhi ina waipuketia



He aha tēnā mea, te wai ua?

Ko te wai ua te rerenga iho o te wai
i ngā momo mata ina heke te ua.

Ka heke ana te ua, ka rere māori noa te wai ua i te mata o te whenua ki tōna taunga tapotu katoa. I ngā wā e māori noa iho ana, e iti noa iho ana hoki te heke o te ua, he māmā noa iho ngā pānga ki te tangata, ki te rawa tūwāhi rānei. Heoi anō, ina heke te ua tātā, ā, ka rewa te wai o te kōtuinga wai ua ki tōna pae tiketike katoa ka taea, ina pāpunitia rānei, ka rōrahi ake te wai e rere ana i runga whenua, me te aha, ka rere pea te waipuke. Nā te huringa o te āhuarangi e piki haere nei te maha me te kaha o ngā marangai taikaha, nō reira, me takatū, me manawaroa ake hoki tātou i te waipuke.



He kōrero mō te wai ua

Ka rere te wai ua i ngā whenua e tūmatau ana, e tūmataiti ana hoki mā ngā kōawa, mā ngā pū parakaingaki, mā ngā huarahi, mā ngā papa rēhia, mā ngā repo me ngā roma i tōna rerenga atu ki te moana.

He mahi tā tēnā, tā tēnā ki te tautiaki i te kōtuinga wai ua e iti ake ai te pānga i ngā waipuke. Mā te tuku kia haumaruru te rere noa o te wai mā ō tātou pae kiritata, ka āwhina tātou kia noho haumaruru ō tātou whānau, ngā wāhi noho me te hāpori i ngā āwhā.

Kei a wai te haepapa ki te tautiaki i te kōtuinga wai ua?

Ka tū te kōtuinga tūmatau mō te wai ua hei painga mō ētahi hāpori whānui, ā, e whakahaeretia ana e Te Kaunihera o Tāmaki Makaurau (e Auckland Transport rānei i ngā rohe tuawhenua). E rere ana ētahi wāhanga o te kōtuinga tūmatau mō te wai ua i runga, i raro rānei i ngā rawa tūwāhi e tūmataiti ana.

Ko ngā pūnaha wai ua e tūmataiti ana ngā pū me ngā kōawa o runga i ngā rawa tūwāhi e tūmataiti ana e hono nei ki te kōtuinga tūmatau. He wāhanga ngā roma e rere ana mā te rawa tūwāhi e tūmataiti ana rānei, i te taha rānei o taua rawa tūwāhi, nō te pūnaha wai ua e tūmataiti ana. Kei te tangata nōna nei te rawa tūwāhi te haepapa ki te tautiaki i te pūnaha wai ua e tūmataiti ana, (tae atu ki ngā roma me ngā ara e rere ai te wai i runga whenua), e toro atu ana ki te kōtuinga tūmatau, ā, tae atu hoki ki ōna hononga.

E pūrongotia ai ngā tūraru mō te waipuke i te wai ua, pēnei i te pāpunitanga o ngā kōawa, o ngā pū parakaingaki, o ngā rua hopuwai, o ngā tukutuku rino rānei, e tonoa ai rānei kia tū tētahi whakatewhatewha i muri i te waipuke, i te hekenga rānei o te wai ua i te āwhā, waea atu ki a Te Kaunihera o Tāmaki Makaurau mā te **09 301 0101**.

Mō te pāpunitanga o te kōawa, o te paipa rānei i tētahi rawa tūwāhi e tūmataiti ana, waea atu ki tētahi kaimahi kōrero wai, ki tētahi kaimahi kōawa rānei.



He aha tēnā mea, te ara e rere ai te wai i runga whenua?

Ko te ara e rere ai te wai i runga whenua te huarahi mā reira e rere māori noa ai te wai i runga i te mata o te whenua. Ka heke ana te ua tātā, ka huri te awa e rere ai te wai i runga whenua hei roma rangitahi e tere nei tōna rere.

He aha tēnā mea, te mānia waipuke?

Ko ngā mānia waipuke ngā wāhi e matapaetia nei te kapi katoatanga ōna i te waipuke ina heke te ua tātā. Takoto ai ngā mānia nei i ngā wāhi tapotu, i te taha hoki o te roma me te awa, tae noa hoki ki ngā roma i rere kē mā te paipa i ngā wā o mua.



He aha tēnā mea, te wāhi e whakaraerae ana ki te waipuke?

Ko ngā wāhi e whakaraerae ana ki te waipuke ngā wāhi e tapotu ana e mau ai, e pupuke ai te wai i te hekenga o te ua tātā, ka mutu, ka tino pērā ina rewa te wai i te putanga ki tōna pae tiketike katoa ka taea. Ka māori noa rānei te takoto mai o ēnei mānia, ka puta rānei nā ngā panonitanga ki te whenua.



Me mōhio ki ō tūraru i te waipuke

Ka tūraru pea tō rawa tūwāhi i te waipuke nā ōna momo take, tae atu ki:

- tana tū i te take o tētahi puke/huarahi, o tētahi tomokanga waka rānei e pou pou ana
- tana tū i te taha o tētahi roma, o tētahi awa rānei (e pātata ana rānei)
- te mānia waipuke, ki te tūraru rānei o te wāhi e tū whakaraerae ana ki te waipuke i runga rānei i te rawa tūwāhi, i tētahi wāhi rānei e pātata ana ki reira
- te ara e rere ai te wai i runga i te whenua o te rawa tūwāhi (e pātata ana rānei)
- tana tū i tētahi rohe tāone me ōna mata mārō (pēnei i te raima, i te papauka) kāore nei te miti wai e taea
- ōna panonitanga pea kua mahia ki te whenua, ki ngā whare rānei e aukati nei i te rere o te wai ua
- tana tū i tētahi wāhi takutai e tapotu ana.

Tirohia te āhua o te tūraru i te waipuke ka pā pea ki tō rawa tūwāhi mā te titiro ki te mātai waipuke

a Te Kaunihera o Tāmaki Makaurau:

aucklandcouncil.govt.nz/floodviewer

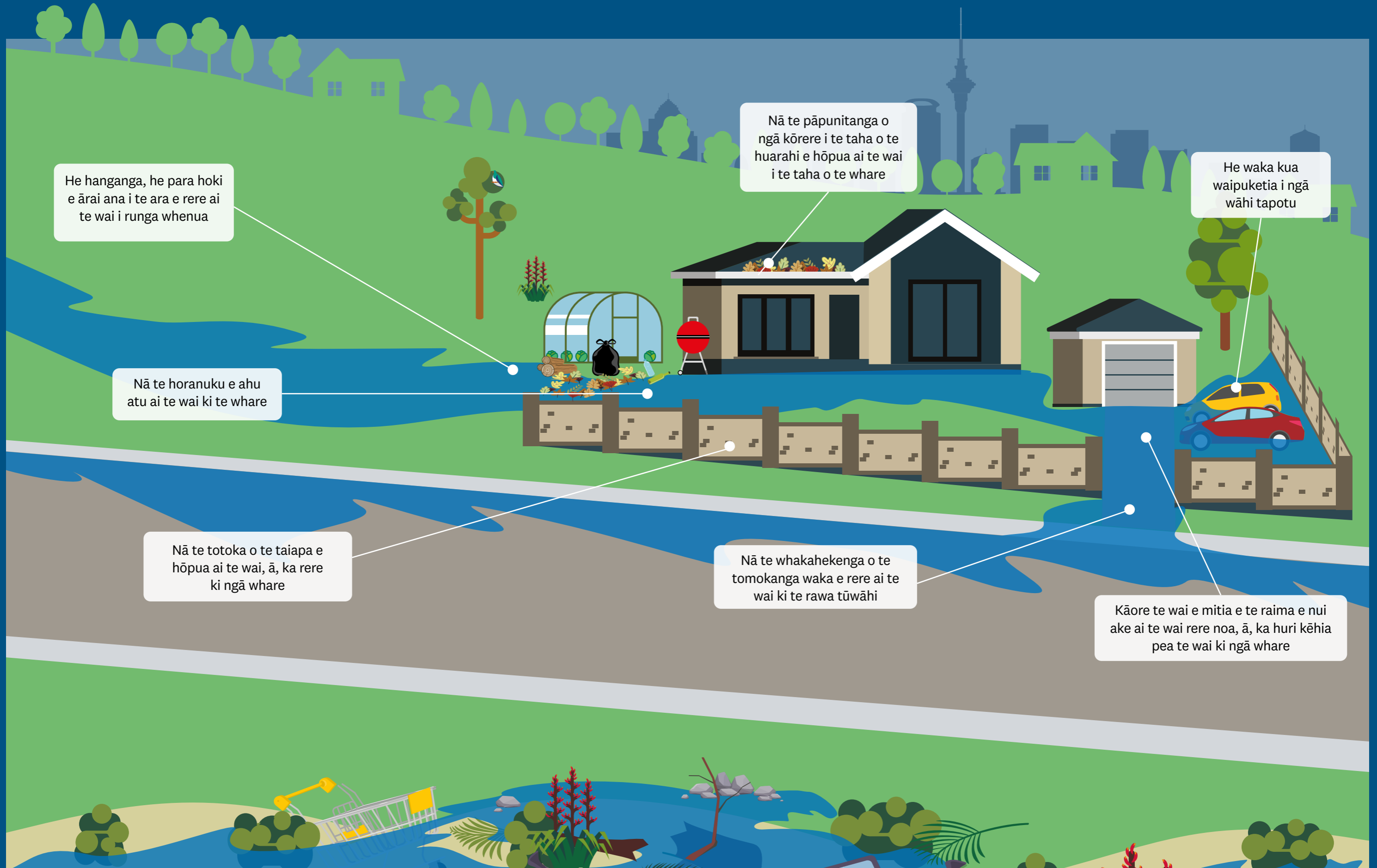
(pānuitia te tuarā o tēnei mātārere e kitea ai he pārongo atu anō i te mātai waipuke).

Ngā ara māmā e iti ake ai te takakinotanga ā-waipuke ina kawatautia tētahi āwhā

Ahakoia kāore ō tātou mana ki te huarere, ā, i ōna wā kāore e taea te waipuke te aukati atu, engari arā kē ētahi mahi ka taea e koe hei whakarite i a koutou ko tō whānau mō ngā āwhā, hei whakaiti hoki i te takakinotanga ā-waipuke. Whakaarohia te mahinga o ēnei e rārangi iho nei:

- nekehia ngā waka, ngā tūemi puiaki me ngā kararehe kia tawhiti i ngā wāhi tapotu tērā pea ka waipukehia
- tirohia ngā kōrere i te taha o te huarahi me ngā kōawa kia wātea ai i ngā kōkīkī, e māmā ai te rere atu o te wai
- tahia atu ngā para me ngā kōkīkī ka tere atu pea i te waipuke, e pāpunitia ai te rere o te wai
- i te whare, penapenahia ngā puiaki me ngā tuhinga whai tikanga ki ngā wāhi teitei
- kei noho ngā wāhi ka waipuketia pea, pēnei i te karāti me te pūwhenua, hei wāhi moe
- kia rite tō pēke mō ngā rawa whakaora me te mahere mō ngā take ohotata, tae atu ki ō mōkai, kei tūpono mate koe ki te whakatahi. Toru atu ki **getready.govt.nz** e kitea ai he pūrongo atu anō
- pūrongotia he pāpunitanga e kitea ana i te kōtuinga tūmatau (ngā kōrere i te taha o te huarahi) ki te kaunihera mā te **09 301 0101**.

Ngā take e pā ana ki te wai ua i te rawa tūwāhi



He hanganga, he para hoki e ārai ana i te ara e rere ai te wai i runga whenua

Nā te horanuku e ahu atu ai te wai ki te whare

Nā te totoka o te taiapa e hōpua ai te wai, ā, ka rere ki ngā whare

Nā te pāpunitanga o ngā kōrere i te taha o te huarahi e hōpua ai te wai i te taha o te whare

He waka kua waipuketia i ngā wāhi tapotu

Nā te whakahekenga o te tomokanga waka e rere ai te wai ki te rawa tūwāhi

Kāore te wai e mitia e te raima e nui ake ai te wai rere noa, ā, ka huri kēhia pea te wai ki ngā whare

E rīhi atu ana koe i tō kāinga?

Ahakoā, i te nuinga o te wā, ko te haepapa mō ngā mahi whakatikatika whare me te tautiaki i te rawa tūwāhi (tirohia tō tuhinga rīhi, tō whakaaetanga ā-rīhi rānei e kitea ai ngā taipitopito whāiti), kei ngā ringa kē o te tangata nōna nei te mana ki te rawa tūwāhi, nōna nei rānei te kāinga e rīhingia atu ana, me āta whakaaro koe ki te wāhi e noho ai ō rawa, ka mutu, me tiaki te rawa tūwāhi e iti ake ai ngā tūraru i te waipuke me te takakinotanga.

Ngā whakapaipaitanga ake ā-pae tawhiti e iti ake ai te pānga o ngā waipuke ā haere ake nei

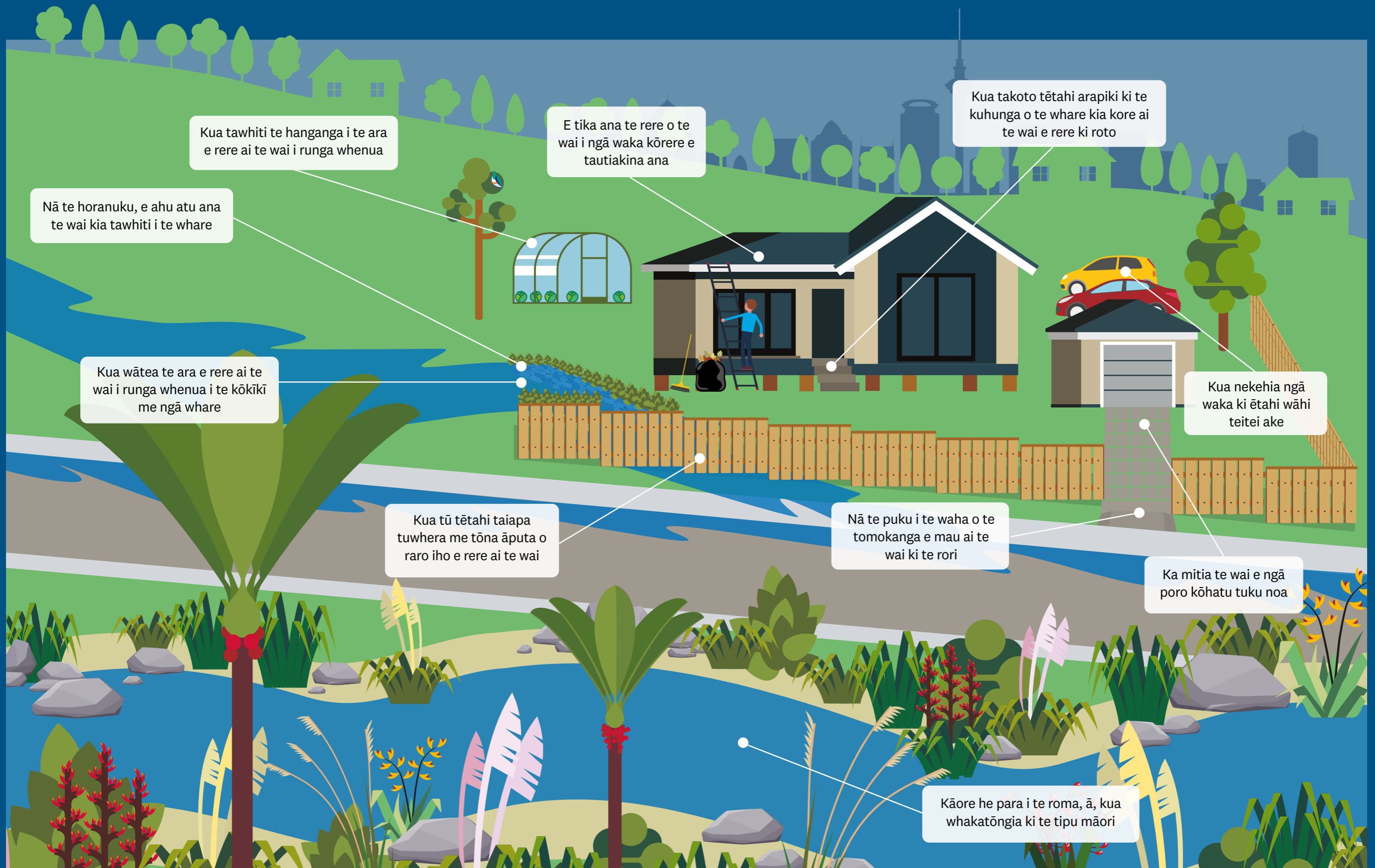
Mēnā tō rawa tūwāhi kei tētahi wāhi e tūraru ana, e mōrearea ana rānei i te waipuke, mēnā rānei he panonitanga kua pā ki te rere māori noa o te wai, pēnei i te pāpunitanga o te ara e rere ai te wai i runga whenua nā te kōkīkī, nā te whakatūnga rānei o tētahi hanganga i runga ake o taua ara rā, ka rōrahi ake pea te wai e rere rā ki tō rawa tūwāhi me tō whare. Mehemea e takoto ana tētahi ara e rere ai te wai i runga whenua ki tōu anō rawa tūwāhi, me tino tuku kia rere mai, kia rere atu te wai i tōna wāhi māori e tika ana, heoi anō, arā ētahi whakapaipaitanga ake hei whai pea māu e iti ake ai ngā pānga i te waipuke.

Ka ea rānei i tō inihua ngā takakinotanga ka hua mai i te waipuke?

Mehemea ka āhei, me whai whakaaro kia whakapikihia ake te uara o tō kirimana inihua e pā ana ki ngā take waipuke.

- Mehemea e tapotu ake ana te tomokanga waka i te rori, ā, kāore i tētahi ara e rere ai te wai i runga whenua, me whai kia eke tōna tiketike ki tōna wāhi e tika ana, me whai puku rānei e noho tonu ai te wai ki te rori, e kore kē ai hoki e heke ki tō tomokanga waka.
- Ka mahia ana he mahi ki te horanuku, me whai kia takoto te whenua e ahu atu ai te wai i tō kāinga.
- Ko te painga atu kia teitei ake te papa o tō whare i te whenua huri noa, ā, me āta piki ake mā te arapiki (mā te rōnaki rānei) e tomokia ai tō whare.
- Whakatikahia, whakakapihia rānei ngā waka kōrere me ngā paipa e heke ana i te tuanui kia kore ai te wai e hōpua i te taha o tō whare.
- Whakatūngia ngā taiapa me ngā whare kia tawhiti i ngā ara e rere ai te wai i runga whenua, ā, me kite he āputa i waenga i te papa me te take o te taiapa e rere ai te wai i raro iho.
- Mehemea ka taea, whakakapihia ngā mata mārō pēnei i te raima, ki ngā papanga tuku noa pēnei i te pātīti, i ngā poro kōhatu rānei hei miti i te wai, e iti ake ai hoki te rere noa o te wai.

Ngā whakapaipaitanga ake i te rawa tūwāhi e pā ana ki te wai ua



Kua tawhiti te hanganga i te ara e rere ai te wai i runga whenua

E tika ana te rere o te wai i ngā waka kōrere e tautiakina ana

Kua takoto tētahi arapiki ki te kuhunga o te whare kia kore ai te wai e rere ki roto

Nā te horanuku, e ahuru ana te wai kia tawhiti i te whare

Kua wātea te ara e rere ai te wai i runga whenua i te kōkīki me ngā whare

Kua nekehia ngā waka ki ētahi wāhi teitei ake

Kua tū tētahi taiapa tuwhera me tōna āputa o raro iho e rere ai te wai

Nā te puku i te waha o te tomokanga e mau ai te wai ki te rori

Ka mitia te wai e ngā poro kōhatu tuku noa

Kāore he para i te roma, ā, kua whakatōngia ki te tipu māori

He roma kei runga i taku rawa tūwāhi, e tata ana rānei

He roma tūmataiti te nuinga o ngā roma e rere ana i te rawa tūwāhi tūmataiti, i te taha rānei. Ko te haepapa mō te tautiakanga o te hōngere me ngā tahatika o te roma, e rere noa ai te wai, kei ngā ringa o te tangata nōna nei te mana ki te rawa tūwāhi.

Ka heke ana te ua tātā, ka pūrena pea ngā roma i te rōrahi o te wai. E iti ake ai te takakinotanga o tō whare, ko te hunga noho i te taha o te roma, me:

- whakawātea i te roma i ngā kōkikī, i ngā rākau kua hinga, i ngā para me ngā tipu taru tawhiti e rere noa ai te wai
- whakatō ki ngā tahatika o te roma ētahi tipu māori e whāiti nei ngā kahiwi, me ngā rau e tīraha ai i te waipuke, kia kore ai ngā tahatika o te roma e ngāhorohoro, kia tū ai hoki he taunga mō ngā tūora mohao.

He rite tonu te rere o te roma i ngā rawa tūwāhi huhua, nō reira, he pai tonu te whakaaro kia mahi tahi koutou ko ō kiritata ki te tautiaki i te roma e noho haumarua ai te katoa i te waipuke. Kōrero ki ō kiritata, ki tō hapori pātata / rōpū ā-taiao e pā ana ki te mahi tahi i te taha o ētahi atu e noho pātata ana kia oti ai ētahi whakapaipaitanga ake ki tō roma.

Me whai whakaaetanga e āhei ai te mahi i taku rawa tūwāhi?

Tērā pea me whai whakaaetanga i te kaunihera e āhei ai ngā mahi hanga, pēnei i te whakarewa i te pae whenua, i te whakanui ake i te wāhi pītongatonga, i te panoni rānei i te ara e rere ai te wai i runga whenua.

Ngā mahi noa me whai whakaaetanga ā-hanga, ā-rawa rānei:

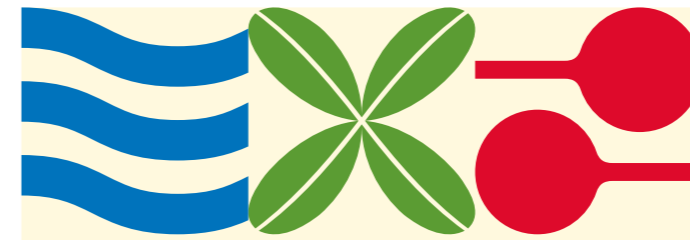
- te hanga whare me ngā hanganga (tae atu ki te taiapa) i te mānia waipuke
- te whakapeau, te panoni, te ārai rānei i te ara e rere ai te wai i runga whenua
- ngā mahi kerī whenua i roto i tētahi roma (i te taha rānei)
- te hutinga o ngā otaota e pātata ake ana i te 10m ki tētahi roma, mehemea kāore ngā tipu māori, ngā tipu rānei nō tāwāhi, i te rārangī o te Mahere ā-Rohe mō te Aukati Riha
- ngā hanganga hou, ngā hanganga whakakapi rānei (tae atu ki te taiapa) i roto i te roma (i te taha rānei).

Ka kitea i aucklandcouncil.govt.nz he pārongo mō ngā whakaaetanga, tae atu ki ngā wā me whai e koe, ki te ara hoki hei tonu. Ahakoa te wā, me mātua whai te kaunihera, te kiringaio hanga whare rānei, e mōhiohia ai ngā tohutohu whāiti e pā ana ki ngā here mō te whakaaetanga e hāngai ana ki tō rawa tūwāhi.

Whakaarohia ō kiritata

Ka whakaritea ana he panonitanga ki tō rawa tūwāhi, whakaarohia ō kiritata, ā, kei tukuna kia nui ake te tūraru i te waipuke ki wāhi kē.

He takahanga ture te āta whai kia hurihia te rerenga o te wai ua, e rere noa nei i tō rawa tūwāhi, kia rere kē atu ki tētahi rawa tūwāhi pātata. Me mātua tuku te wai kia rere iho i tōna ara māori, ā, mā te hunga nōna nei te rawa tūwāhi e whakahaere ngā pānga.



Tirohia te tūraru o tō rawa tūwāhi i te waipuke



Whakamahia te mahere pāhekoheko i te **Mātai Waipuke i Tāmaki Makaurau** e kitea ai ngā pūmate waipuke kei tō rawa tūwāhi.

E wātea ana ki te katoa tēnei taupānga utukore, e māmā noa iho nei, i te waea atamai, i te tīpapa, i te rorohiko rānei. Ka kitea i te Mātai Waipuke ngā mānia waipuke, ngā ara e rere ai te wai i runga whenua, ngā wāhi e tū whakaraerae ana ki te waipuke, ngā wāhi hoki e tū whakaraerae ana ki te parawhenua ā-takutai, tae atu hoki ki ngā pārongo, ki ngā tohutohu me ngā ataata e haumarua tonu ai koutou ko tō whānau me tō rawa tūwāhi.

E puritia ana ngā pārongo e kitea nei i te Mātai Waipuke hei titiro mā te marea, ā, e wātea ana ina tonoa kia oti ai tētahi pūrongo e hāngai ana ki te Tauākī Whakaaetanga mō te Pārongo Whenua. Whakahoutia ai ngā whakatauiratanga mō te waipuke i ōna wā, nō reira, ko tā mātou e tūtohu nei, kia rite tonu te tirohia o te taupānga me kore e kitea he panonitanga e pā ana ki tō rawa tūwāhi.



Toro atu ki aucklandcouncil.govt.nz/floodviewer

