

SOUTHWEST WASTEWATER TREATMENT PLANT NOR PROJECT

LANDSCAPE PLANTING PLAN 29.08.2023

DOCUMENT QUALITY ASSURANCE

BIBLIOGRAPHIC REFERENCE FOR CITATION:

Report by Boffa Miskell Limited for Kiwi property limited.

PREPARED BY: Ofa Cocker
Landscape Architect
Boffa Miskell Ltd

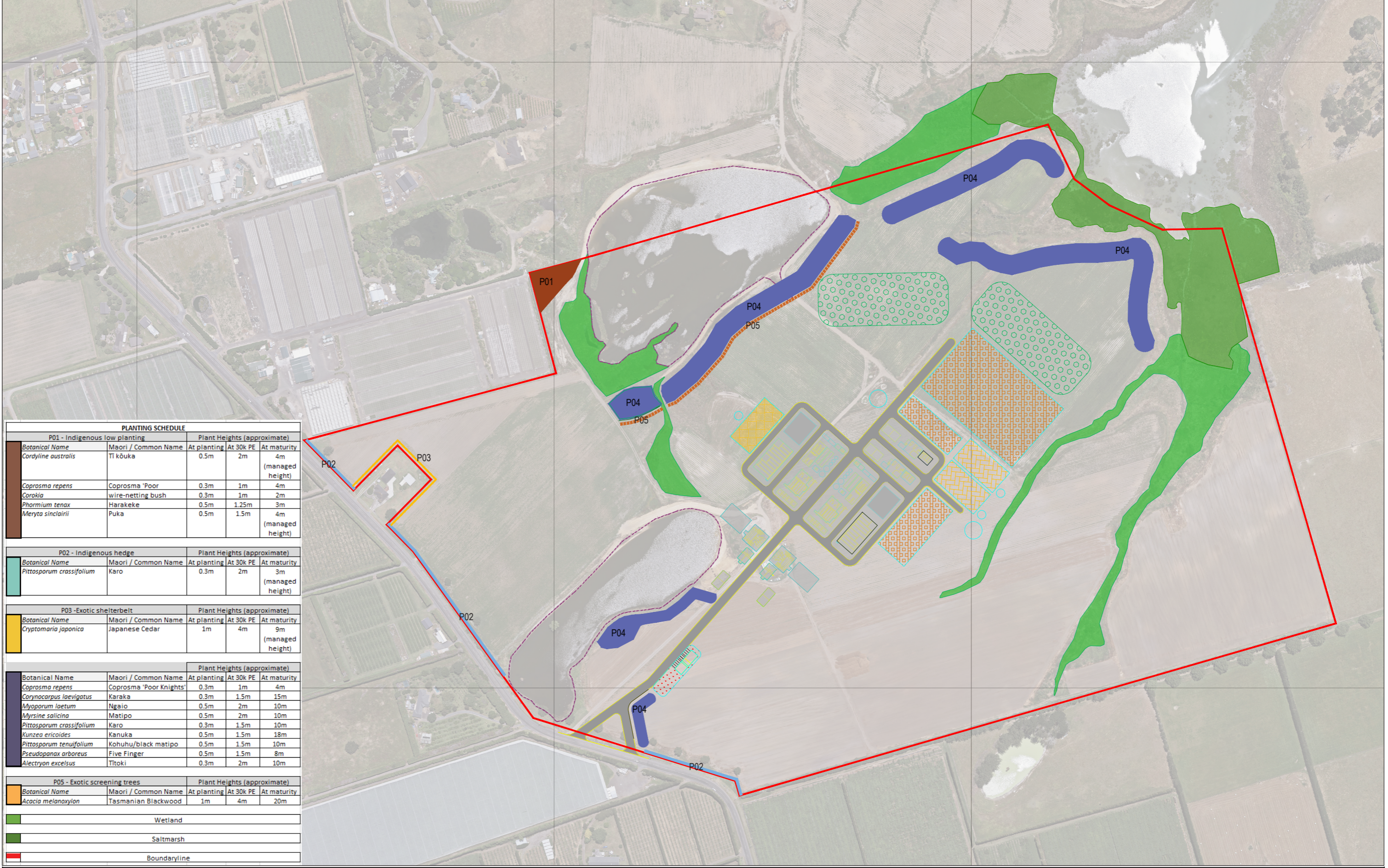
REVIEWED BY: Oliver May
Landscape Architect | Associate Principal
Boffa Miskell Ltd

STATUS: Revision / version: A Issue date: 29 August 2023

File ref: Proposed plants

CONTENTS

| | |
|---|-----------|
| P01 - CONCEPT MITIGATION PLANTING STRATEGY | 04 |
| P02 - INDIGENOUS LOW PLANTING | 05 |
| P03 - INDIGENOUS HEDGE | 06 |
| P04 - EXOTIC SHELTERBELT | 07 |
| P05 - INDIGENOUS VISUAL BUFFER PLANTING | 08 |
| P06 - EXOTIC SCREENING TREES | 09 |



| PLANTING SCHEDULE | | | | |
|---------------------------------|-------------------------|-------------|-----------|------------------------|
| P01 - Indigenous low planting | | | | |
| Botanical Name | Maori / Common Name | At planting | At 30k PE | At maturity |
| <i>Cordyline australis</i> | Ti kōuka | 0.5m | 2m | 4m (managed height) |
| <i>Coprosma repens</i> | Coprosma 'Poor | 0.3m | 1m | 4m |
| <i>Corokia</i> | wire-netting bush | 0.3m | 1m | 2m |
| <i>Phormium tenax</i> | Harakeke | 0.5m | 1.25m | 3m |
| <i>Meryta sinclairii</i> | Puka | 0.5m | 1.5m | 4m (managed height) |
| P02 - Indigenous hedge | | | | |
| Botanical Name | Maori / Common Name | At planting | At 30k PE | At maturity |
| <i>Pittosporum crassifolium</i> | Karo | 0.3m | 2m | 3m (managed height) |
| P03 - Exotic shelterbelt | | | | |
| Botanical Name | Maori / Common Name | At planting | At 30k PE | At maturity |
| <i>Cryptomeria japonica</i> | Japanese Cedar | 1m | 4m | 9m (managed height) |
| P04 - Wetland/Saltmarsh | | | | |
| Botanical Name | Maori / Common Name | At planting | At 30k PE | At maturity |
| <i>Coprosma repens</i> | Coprosma 'Poor Knights' | 0.3m | 1m | 4m |
| <i>Corynocarpus laevigatus</i> | Karaka | 0.3m | 1.5m | 15m |
| <i>Myoporum laetum</i> | Ngaio | 0.5m | 2m | 10m |
| <i>Myrsine salicina</i> | Matipo | 0.5m | 2m | 10m |
| <i>Pittosporum crassifolium</i> | Karo | 0.3m | 1.5m | 10m |
| <i>Kunzea ericoides</i> | Kanuka | 0.5m | 1.5m | 18m |
| <i>Pittosporum tenuifolium</i> | Kohuhu/black matipo | 0.5m | 1.5m | 10m |
| <i>Pseudopanax arboreus</i> | Five Finger | 0.5m | 1.5m | 8m |
| <i>Alectryon excelsus</i> | Titoki | 0.3m | 2m | 10m |
| P05 - Exotic screening trees | | | | |
| Botanical Name | Maori / Common Name | At planting | At 30k PE | At maturity |
| <i>Acacia melanoxylon</i> | Tasmanian Blackwood | 1m | 4m | 20m |
| Wetland | | | | |
| Saltmarsh | | | | |
| Boundaryline | | | | |

ORIGINAL IN COLOUR

KEY



| REV | DATE | DESCRIPTION |
|-----|----------|--------------------|
| B | 27.06.23 | SITE PLANTING PLAN |

APPRVD
OMa

**SOUTHWEST WASTE
WATER TREATMENT PLANT
NOR PROJECT**

CONCEPT MITIGATION PLANTING
STRATEGY

| Design | Scale | Date |
|--------|-----------|------------|
| OMa | 1:2000@A1 | 27.06.2023 |
| Drawn | OCo | |
| Check | OMa | |

PLANTING PLAN

DRAWING NO. **BM230101-500** REVISION **(B)**

P01. INDIGENOUS LOW PLANTING

- 1. *Cordyline australis*
Tī kōuka
- 2. *Coprosma repens*
Coprosma 'Poor Knights'
- 3. *Corokia*
wire-netting bush
- 4. *Phormium tenax*
Harakeke
- 5. *Meryta sinclairii*
Puka



P02. INDIGENOUS HEDGE

1. *Pittosporum crassifolium*

Karo



P03. EXOTIC SHELTERBELT

- 1. *Cryptomaria Japonica*
Japanese Cedar



P04. INDIGENOUS VISUAL BUFFER PLANTING

- | | | |
|--|--|--|
| 1. <i>Coprosma repens</i> Coprosma 'Poor Knights' | 5. <i>Pittosporum crassifolium</i> Karo | 9. <i>Alectryon excelsus</i> Titoki |
| 2. <i>Corynocarpus laevigatus</i> Karaka | 6. <i>Kunzea ericoides</i> Kanuka | |
| 3. <i>Myoporum laetum</i> Ngaio | 7. <i>Pittosporum tenuifolium</i> Kohuhu/black matipo | |
| 4. <i>Myrsine australis</i> Matipo | 8. <i>Pseudopanax arboreus</i> Five Finger | |



P05. EXOTIC SCREENING TREES

- 1. *Acacia melanoxylon*
Tasmanian Blackwood



About Boffa Miskell

Boffa Miskell is a leading New Zealand professional services consultancy with offices in Auckland, Hamilton, Tauranga, Wellington, Christchurch, Dunedin and Queenstown. We work with a wide range of local and international private and public sector clients in the areas of planning, urban design, landscape architecture, landscape planning, ecology, biosecurity, cultural heritage, graphics and mapping. Over the past four decades we have built a reputation for professionalism, innovation and excellence. During this time we have been associated with a significant number of projects that have shaped New Zealand's environment.

www.boffamiskell.co.nz

| | | | | | | |
|-----------------|-----------------|-----------------|-------------------|---------------------|-------------------|----------------|
| Auckland | Hamilton | Tauranga | Wellington | Christchurch | Queenstown | Dunedin |
| 09 358 2526 | 07 960 0006 | 07 571 5511 | 04 385 9315 | 03 366 8891 | 03 441 1670 | 03 470 0460 |