

- NOTES:**
- DRAWING TO BE READ IN CONJUNCTION WITH SPECIFICATION AND DESIGN DRAWINGS.
  - ALL SIGNS AND MARKINGS ARE TO COMPLY WITH WAKA KOTAHI NZ TRANSPORT AGENCY MANUALS
    - MANUAL OF TRAFFIC SIGNS AND MARKINGS.
      - PART 1: SIGNS
      - PART 2: MARKINGS
    - TRAFFIC CONTROL DEVICES MANUAL
  - ALL REFLECTORISED MARKINGS TO MEET STANDARDS SPECIFIED IN WAKA KOTAHI NZTA P30 DOCUMENT.
  - ALL KERBS ON TRAFFIC ISLANDS TO BE PAINTED WITH WHITE REFLECTORISED MARKINGS TO MEET STANDARD SPECIFIED IN WAKA KOTAHI NZTA P30 DOCUMENT.
  - RAISED PAVEMENT MARKERS NOT SHOWN, REFER TO MOTSAM FOR LOCATIONS AND REQUIREMENTS.

- MARKINGS LEGEND:**
- WHITE**
- A. 100 mm WIDE REFLECTORISED WHITE SOLID LINE.
  - B. 4.8 m LONG REFLECTORISED WHITE LEFT / STRAIGHT AHEAD ARROW SYMBOL.
  - C. 2.5 m x 600 mm x 600 mm PEDESTRIAN CROSSING AS PER TCD MANUAL.
  - D. 2.5 m LONG REFLECTORISED WHITE GIVE WAY TRIANGLE SYMBOL.
  - E. 4.0 m LONG REFLECTORISED WHITE GIVE WAY TRIANGLE SYMBOL.
  - F. 300 mm WIDE REFLECTORISED SOLID WHITE LIMIT / HOLDING LINE.
  - G. 100 mm WIDE REFLECTORISED WHITE SOLID CENTRELINE.
  - H. 100 mm WIDE REFLECTORISED WHITE CONTINUITY LINE 1 m STRIPE, 3 m GAP.
  - I. 200 mm WIDE REFLECTORISED WHITE CONTINUITY LINE 1 m STRIPE, 3 m GAP.
  - J. 900mm WIDE REFLECTORISED WHITE BARS WITH 350mm GAPS.
  - K. 200 mm WIDE REFLECTORISED WHITE SOLID LINE.
  - L. 2.4m HIGH REFLECTORISED WHITE 'STOP' / 'P' LETTERING.
  - M. 7.2 m LONG REFLECTORISED WHITE LEFT / STRAIGHT AHEAD ARROW SYMBOL.
  - N. 150 mm WIDE REFLECTORISED WHITE SOLID LINE
  - O. 100mm WIDE REFLECTORISED WHITE CONTINUITY LINE, 3m STRIPE, 7m GAP
- YELLOW**
- P. 100 mm WIDE REFLECTORISED YELLOW SOLID LINE.
  - Q. 600 mm WIDE REFLECTORISED YELLOW BARS WITH 600 mm GAPS.
  - R. REFLECTORISED YELLOW DISABLED PARKING SYMBOL.
  - S. 300 mm WIDE REFLECTORISED SOLID YELLOW LIMIT / HOLDING LINE.
  - T. 100 mm WIDE REFLECTORISED WHITE CONTINUITY LINE 1 m STRIPE, 2 m GAP.
  - U. 600mm WIDE REFLECTORISED WHITE BARS WITH 200mm GAPS.
- BLUE**
- V. 4.8 m LONG REFLECTORISED BLUE RIGHT / STRAIGHT AHEAD ARROW SYMBOL.
- RED**
- W. RED COLOURED SURFACING FRAMED WITH 100 mm REFLECTORISED WHITE. REFER TO NZTA P33 - COLOURED SURFACING.

**SIGNAGE AND MARKINGS PLAN - CVSC**  
SCALE: 1:250

1:250@ A1  
1:500@ A3  
0 4 8 12 16 20 24 m

REVISION	AMENDMENT	APPROVED	DATE
0A	ISSUED FOR TENDER	F.R.	2023-11-13
0B	ISSUED FOR RESOURCE CONSENT - S92 RESPONSE	F.R.	2024-01-19



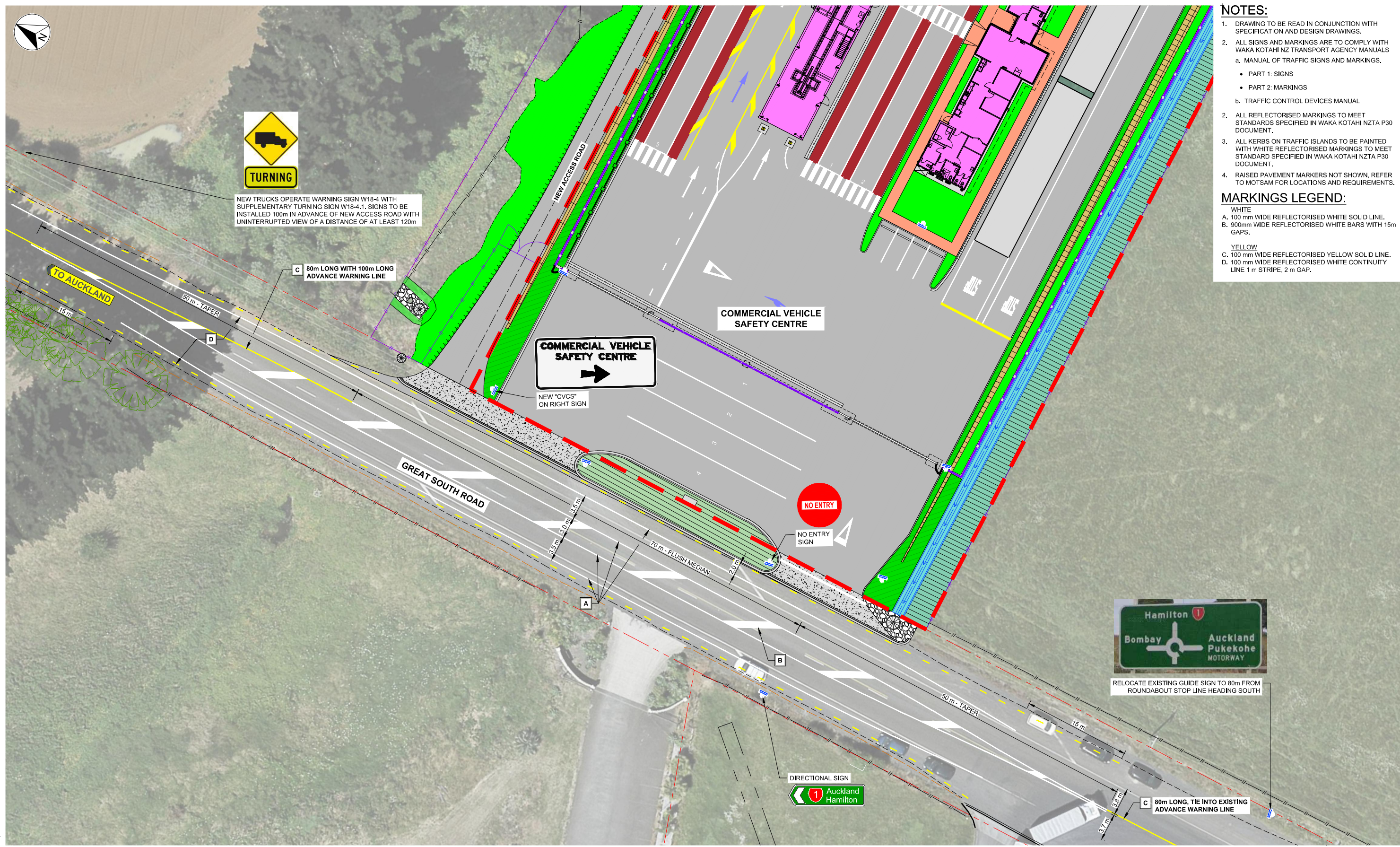
**wsp**  
Wellington Office  
+64 4 471 7000  
PO Box 12-003  
Wellington 6144  
New Zealand

CIVIL

SCALES	DESIGNED	APPROVED
1:250 (A1), 1:500 (A3) <td>P. FIEREK</td> <td>F. RAHMAN</td>	P. FIEREK	F. RAHMAN
DRAWN	DESIGN VERIFIED	APPROVED DATE
P. FIEREK	C. NELLES	2024-01-19

TENDER

PROJECT	TITLE	WSP PROJECT NO. (SUB-PROJECT)	SHEET NO.	REVISION
WAKA KOTAHI NZ TRANSPORT AGENCY BOMBAY, AUCKLAND WEIGH RIGHT PROGRAMME - BOMBAY CVSC	SIGNAGE AND MARKINGS CVSC	5C4353-WSP-54-DR-	C-7010	0B



- NOTES:**
- DRAWING TO BE READ IN CONJUNCTION WITH SPECIFICATION AND DESIGN DRAWINGS.
  - ALL SIGNS AND MARKINGS ARE TO COMPLY WITH WAKA KOTAHI NZ TRANSPORT AGENCY MANUALS
    - MANUAL OF TRAFFIC SIGNS AND MARKINGS.
      - PART 1: SIGNS
      - PART 2: MARKINGS
    - TRAFFIC CONTROL DEVICES MANUAL
  - ALL REFLECTORISED MARKINGS TO MEET STANDARDS SPECIFIED IN WAKA KOTAHI NZTA P30 DOCUMENT.
  - ALL KERBS ON TRAFFIC ISLANDS TO BE PAINTED WITH WHITE REFLECTORISED MARKINGS TO MEET STANDARD SPECIFIED IN WAKA KOTAHI NZTA P30 DOCUMENT.
  - RAISED PAVEMENT MARKERS NOT SHOWN, REFER TO MOTSAM FOR LOCATIONS AND REQUIREMENTS.

- MARKINGS LEGEND:**
- WHITE
- 100 mm WIDE REFLECTORISED WHITE SOLID LINE.
  - 900mm WIDE REFLECTORISED WHITE BARS WITH 15m GAPS.
- YELLOW
- 100 mm WIDE REFLECTORISED YELLOW SOLID LINE.
  - 100 mm WIDE REFLECTORISED WHITE CONTINUITY LINE 1 m STRIPE, 2 m GAP.

**SIGNAGE AND MARKINGS PLAN - GREAT SOUTH ROAD**

1:250 @ A1  
1:500 @ A3

REVISION	AMENDMENT	APPROVED	DATE
0A	ISSUED FOR TENDER	F.R.	2023-11-13
0B	ISSUED FOR RESOURCE CONSENT - S92 RESPONSE	F.R.	2024-01-19



CIVIL

SCALES	DESIGNED	APPROVED
1:250 (A1), 1:500 (A3)	P. FIEREK	F. RAHMAN
DRAWN	P. FIEREK	APPROVED DATE
P. FIEREK	P. FIEREK	2024-01-19
DRAWING VERIFIED	DESIGN VERIFIED	
C. NELLES	C. NELLES	

TENDER

PROJECT	TITLE	WSP PROJECT NO. (SUB-PROJECT)	SHEET NO.	REVISION
WAKA KOTAHI NZ TRANSPORT AGENCY BOMBAY, AUCKLAND WEIGH RIGHT PROGRAMME - BOMBAY CVSC	SIGNAGE AND MARKINGS GREAT SOUTH ROAD	5C4353-WSP-54-DR-	C-7011	0B