

# Memo

30/11/2023

**To:** Isaac Kong  
**From:** Hester Hoogenboezem, Geotechnical Engineer, Regulatory Services  
**Subject:** BUN60424934 – 253 Mill Road, Bombay  
**Status:** Issued for Information

Version: 0

## 1 Introduction

We have been requested by Isaac Kong from Auckland Council Regulatory Services to review the geotechnical information for Resource Consent BUN60424934 for the proposed development at 253 Mill Road, Bombay.

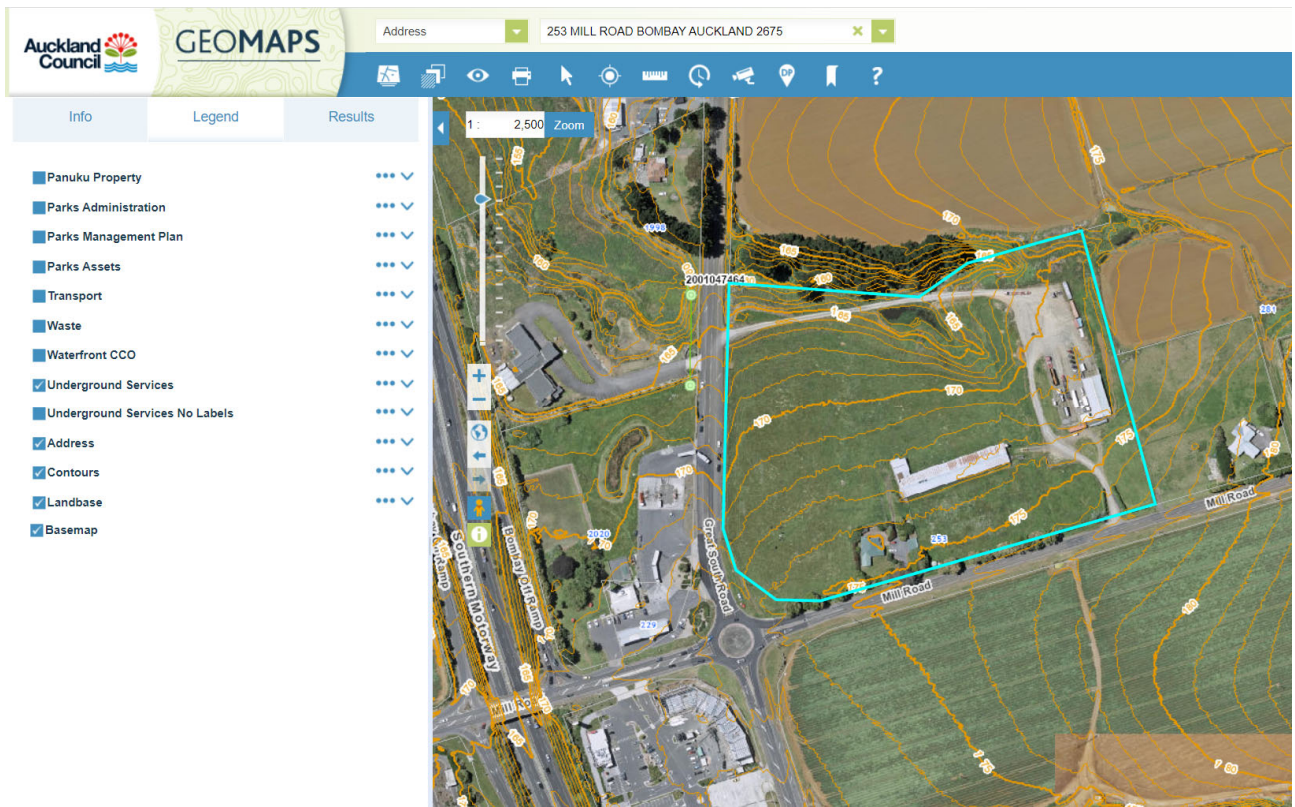
The following relevant documents have been attached to the application and reviewed by us:

- WSP “Waka Kotahi NZ Transport Agency, 5-C4353.54 – Weigh Right Bombay, Geotechnical Interpretive & Design Report” referenced 5C4353-WRP-04-RP-G-1000 and dated 5 October 2023.
- WSP “Waka Kotahi NZ Transport Agency, 5-C4353.54 – Weigh Right Programme - Bombay, Geotechnical Site Investigations Factual Report” referenced 5C4353-WRP-04-RP-G-1001 and dated 9 February 2023.
- WSP, Waka Kotahi NZ Transport Agency, Development Drawings “Commercial Vehicle Safety Programme – Bombay” referenced 5C4353-WSP-54-DR- and dated 25 August 2023.

Based on the assessment, a summary of findings and the following recommended conditions are provided from an engineering perspective.

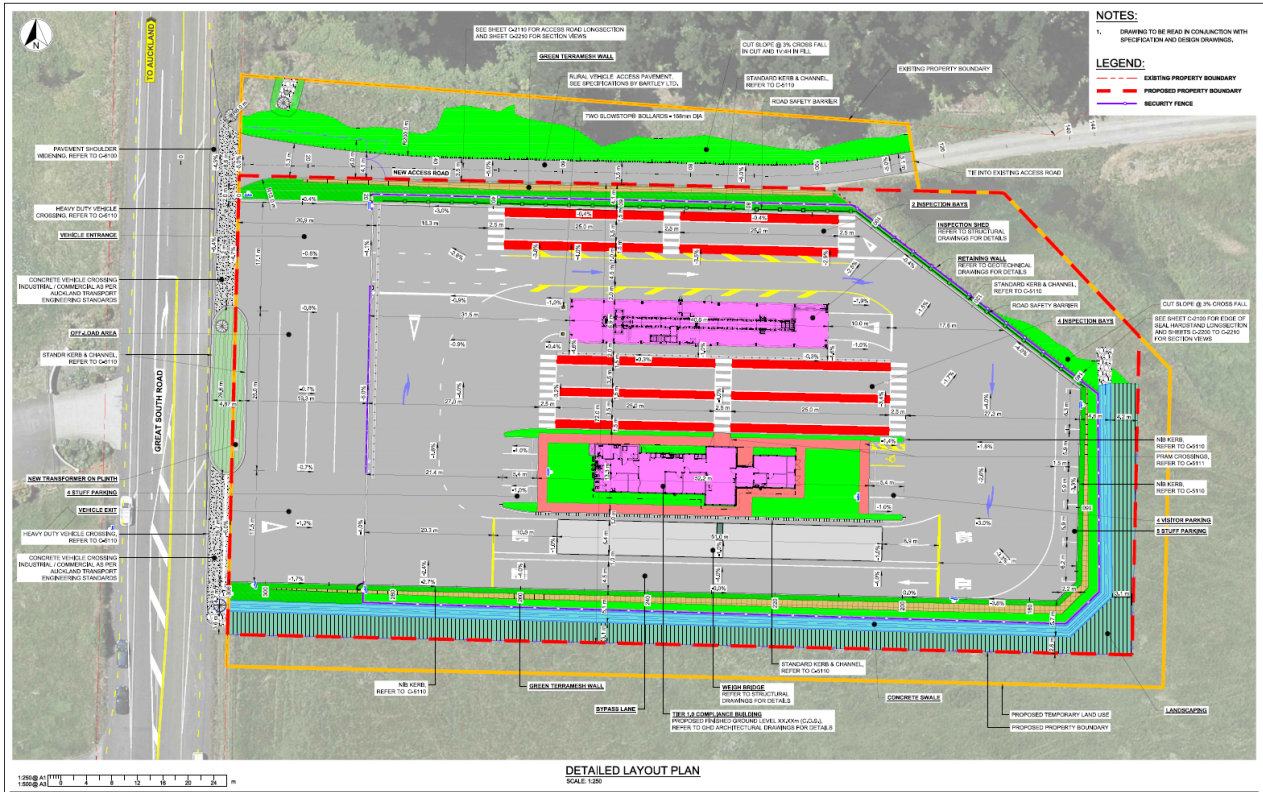
## 2 Summary of assessment Auckland Council GeoMaps

Auckland Council GeoMaps show the site mapped as:

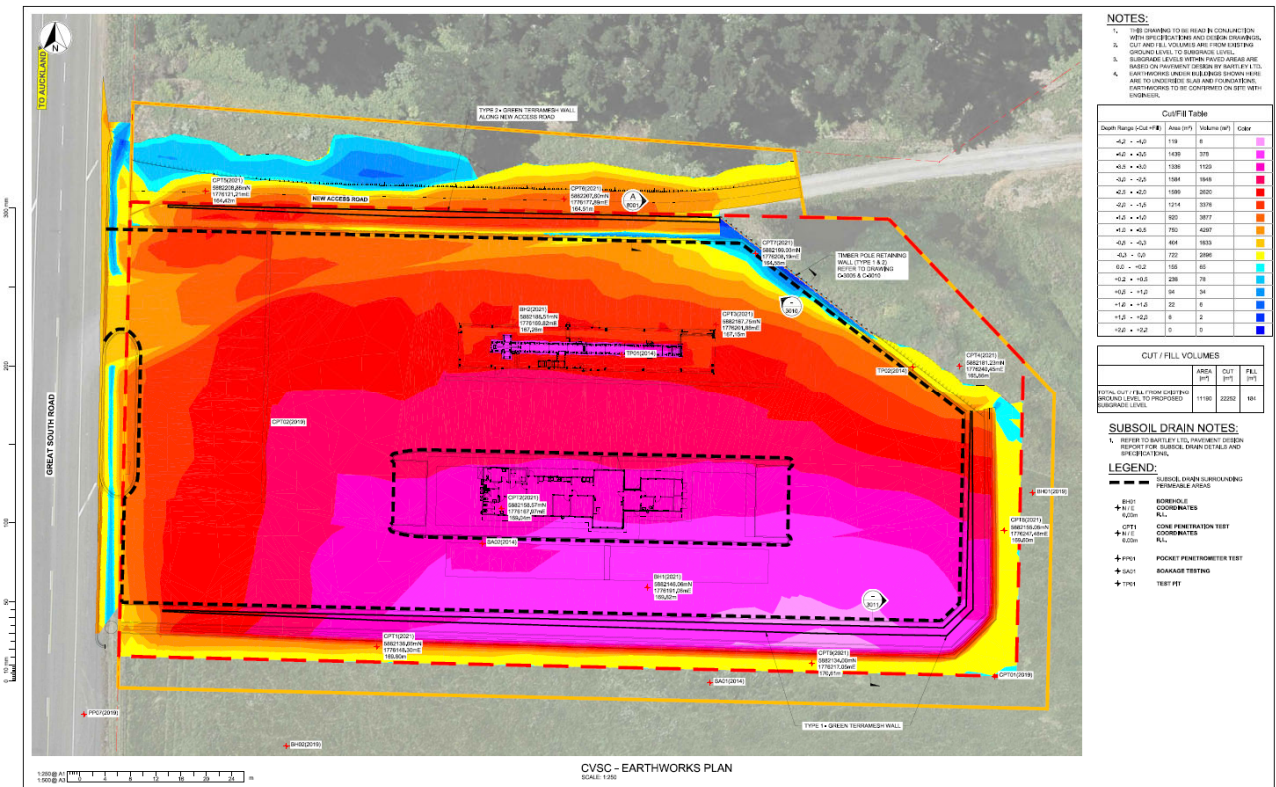


### 3 Geotechnical

The site detailed site layout plan shows the location of the proposed retaining walls and structures:



The earthworks plan shows earthworks cover an area of 11190 m<sup>2</sup>, a cut volume of 22252 m<sup>3</sup> and a fill volume of 184 m<sup>3</sup>.



The application is supported by geotechnical investigation and design reports by WSP “Waka Kotahi NZ Transport Agency, 5-C4353.54 – Weigh Right Bombay, Geotechnical Interpretive & Design Report” referenced 5C4353-WRP-04-RP-G-1000 and dated 5 October 2023, and “Waka Kotahi NZ Transport Agency, 5-C4353.54 – Weigh Right Programme - Bombay, Geotechnical Site Investigations Factual Report” referenced 5C4353-WRP-04-RP-G-1001 and dated 9 February 2023. The geotechnical report details the expected soil conditions across the site. Recommendations have been provided for foundations, retaining wall designs and earthworks.

It is considered that the provided geotechnical reports to be generally suitable for the purposes of Resource Consent.

## 4 Assessment Conclusions

From the above information, it can be advised that the reporting, conclusions and recommendations of the above reports are reasonable for the scale and magnitude of the works and indicate the site can be safely developed from a geotechnical/stability perspective, subject to the following conditions. If appropriately managed, no other properties are likely to be affected from soil instability issues arising from the earthworks. Refer to the recommended conditions below aligning with the engineering reporting.

### Recommended Conditions

1. Prior to the installation of the proposed stormwater discharge outlets, the consent holder must provide a statement from a qualified geotechnical engineering professional confirming suitability of its location and design such that the geotechnical risk is not exacerbated as a result of its installation and use. This statement must be provided to the satisfaction of the Council.
2. All earthworks must be managed to ensure that they do not lead to any uncontrolled instability or collapse affecting either the site or adversely affecting any neighbouring properties. In the event that such collapse or instability does occur, it must immediately be rectified.
3. Earthworks and construction of retaining walls must be supervised by a suitably qualified geotechnical engineering professional (who is familiar with the geotechnical reports by WSP “Waka Kotahi NZ Transport Agency, 5-C4353.54 – Weigh Right Bombay, Geotechnical Interpretive & Design Report” referenced 5C4353-WRP-04-RP-G-1000 and dated 5 October 2023, and “Waka Kotahi NZ Transport Agency, 5-C4353.54 – Weigh Right Programme - Bombay, Geotechnical Site Investigations Factual Report” referenced 5C4353-WRP-04-RP-G-1001 and dated 9 February 2023. In supervising the works, the suitably qualified geotechnical engineering professional must ensure that they are constructed and otherwise completed in accordance with the engineering plans and geotechnical recommendations, relevant engineering codes of practice and detailed plans forming part of the application. The supervising engineer’s contact details must be provided in writing to the Council at least two weeks prior to earthworks commencing on site.
4. Certification from a suitably qualified Chartered Geotechnical Engineer or Chartered Engineering Geologist must be provided to the Council, within ten (10) working days following completion. Written

certification must be in the form of a geotechnical completion report, or any other form acceptable to the Council.

5. The consent holder must engage an engineer to advise the Council of timeframes for unsupported cuts adjacent to boundaries at least one week prior to excavations on boundaries being undertaken.

## 5 Quality assurance

<b><i>Reviewed and approved for release by</i></b>	
<b>Reviewer</b>	Catherine Roh, Senior Geotechnical Engineer, Regulatory Services
<b><i>This memo is satisfactorily completed to fulfil the objectives of the scope. I have reviewed, and quality checked all information included in this memo</i></b>	
<b>Author</b>	Hester Hoogenboezem, Geotechnical Engineer, Regulatory Services
<b>Date printed</b>	30/11/2023 10:44 am