

## Kaipātiki Local Board Workshop Programme

**Date of Workshop:** Wednesday 31 July 2024  
**Time:** 10.00am  
**Venue:** Boardroom, 90 Bentley Ave, Glenfield

Time	Workshop Item	Presenter	Governance role	Proposed Outcome(s)
10.00am – 11.00am	Parks and Community Facilities <ul style="list-style-type: none"> <li>Shepherds Park proposed playground renewal concept and nature play</li> </ul>	<b>Keren Alleyne</b> Senior Project Manager, Parks and Community Facilities  <b>Sarah Jones</b> Manager Area Operations (DT & KLB), Parks and Community Facilities	<ul style="list-style-type: none"> <li>Setting direction</li> </ul>	<ul style="list-style-type: none"> <li>Define board position and feedback</li> </ul>
11.00 – 11.10am	Break			
11.10am – 12.10pm	Kaipātiki Local Board Portfolio Review	<b>Hannah Alleyne</b> Service & Asset Planning Team Leader, Policy  <b>Xian Zhang</b> Service and Asset Planner, Policy	<ul style="list-style-type: none"> <li>Setting direction</li> </ul>	<ul style="list-style-type: none"> <li>Define board position and feedback</li> </ul>

12.10 – 1.00pm	Lunch			
1.00 – 2.00pm	Infrastructure and Environmental Services <ul style="list-style-type: none"> <li>Kaipātiki Local Climate Activation Programme</li> </ul>	<b>Anna Harrison</b> Low Carbon Specialist, Environmental Services  <b>Yasmin Hall</b> Relationship Advisor, Executive Office Resilience & Infrastructure  <b>Robert Sutherland</b> Low Carbon Specialist, Environmental Services  <b>Janet Cole</b> Kaihautū/Chief Executive, Kaipātiki Project  <b>Robyn Forryan</b> Sustainable Living Lead & Para Kore Zero Waste Activator, Kaipātiki Project	<ul style="list-style-type: none"> <li>Setting direction</li> </ul>	<ul style="list-style-type: none"> <li>Define board position and feedback</li> </ul>

**Next workshop: Wednesday 7 August 2024**

<b>7-Aug-24</b>	9.15am	9.50am	Members only time
	10.00am	11.15am	Customer and Community Services - Parks and Community Facilities - Stanaway Reserve
	11.15am	12.15pm	Kura Kāwana presentation - Lee Corrick
	12.15pm	1.00pm	Lunch
	1.00pm	2.00pm	Infrastructure and Environmental Services - Island Bay Pontoon
	2.30pm	4.30pm	<b>Partnering agreement Kaipātiki local board only session - not part of the workshop</b>

**Role of Workshop:**

- (a) Workshops do not have decision-making authority.
- (b) Workshops are used to canvass issues, prepare local board members for upcoming decisions and to enable discussion between elected members and staff.
- (c) Workshops are open to the public however, decisions will be made at a formal, public local board business meeting.
- (d) Members are respectfully reminded of their Code of Conduct obligations with respect to conflicts of interest and confidentiality.
- (e) Workshops for groups of local boards can be held giving local boards the chance to work together on common interests or topics.

# Shepherds Park, Beach Haven Proposed playground renewal concept and nature play

Parks & Community Facilities

31 July 2024





# Shepherds Park



Winter view (no shade sails)





## Purpose

To seek feedback on two  
concept design options  
for Shepherds Park and  
nature play proposal



# Why are we doing this?

- The playground is noted to be in ‘poor condition and requires renewal to today’s standards.
- The Kaipātiki nature spaces and trails report recommends Shepherds Park as a priority site for a future nature play park alongside Spinella Reserve, Monarch Park and Lauderdale Reserve
- The project funding is made up of \$410,000 ABS Capex – Local Renewals and LDI Capex.



# Playground concept design development

The Kaipātiki Local Board Play and Sunsmart provisions report recommends improvements with addition of play elements:

- basket swing
- swing seats for junior aged children
- collaborative spinning or rocking element
- sand play
- themed / role play elements etc.

Considerations incorporated into the proposed concept designs:

- Friends of Shepherds Park feedback
- Local Board play and Sunsmart Provision report.
- Site constraints including existing concrete paths, shade sail poles and the height of the shade sails.





# Consultation and engagement

## Community and Stakeholder engagement

- 'Friends of Shepherds' Park community group
- Kauri Kids manager
- Harbour Sport
- Beach Haven Primary School workshop

## Māori engagement and feedback

- Email sent to Te Kawarau ā Maki advising of project - 5 March 2024
- Further email sent 8 May 2024 with concept attached for comment.

## Auckland Council specialist feedback

- Parks and Community Facilities Area team.
- Play advisor (Nature play)
- Parks and Places specialist



# Community consultation feedback:

## Playground

- Existing metal furniture to be replaced with new seating.
- Themes could include – Seaside or Orchard.

## Nature Play

- Nature play would be aimed at preschool to 12 years old.
- Several small informal play interventions exist e.g., huts, insect hotels and bike tracks. Not necessary to create any other spaces within vegetated areas, preference for no vegetation to be removed or cut down
- Native planted maze walkway, play hut / carex planting / log stepping stones or similar to be incorporated.
- A ‘log walk’ could connect from the fale area through to the grass clearing, connecting nature play area.
- The grass area on the other side of the footpath that slopes down to the coast could be a ‘low mow’ / no mow or wildflower meadow.
- The circular planted area could incorporate plant name ID’s as a small trail.



**Community  
engagement  
and  
consultation**

Planned project engagement:

- AK Have Your Say – online survey
- Letter drop
- Close the loop with Beach Haven Primary school and other community groups.



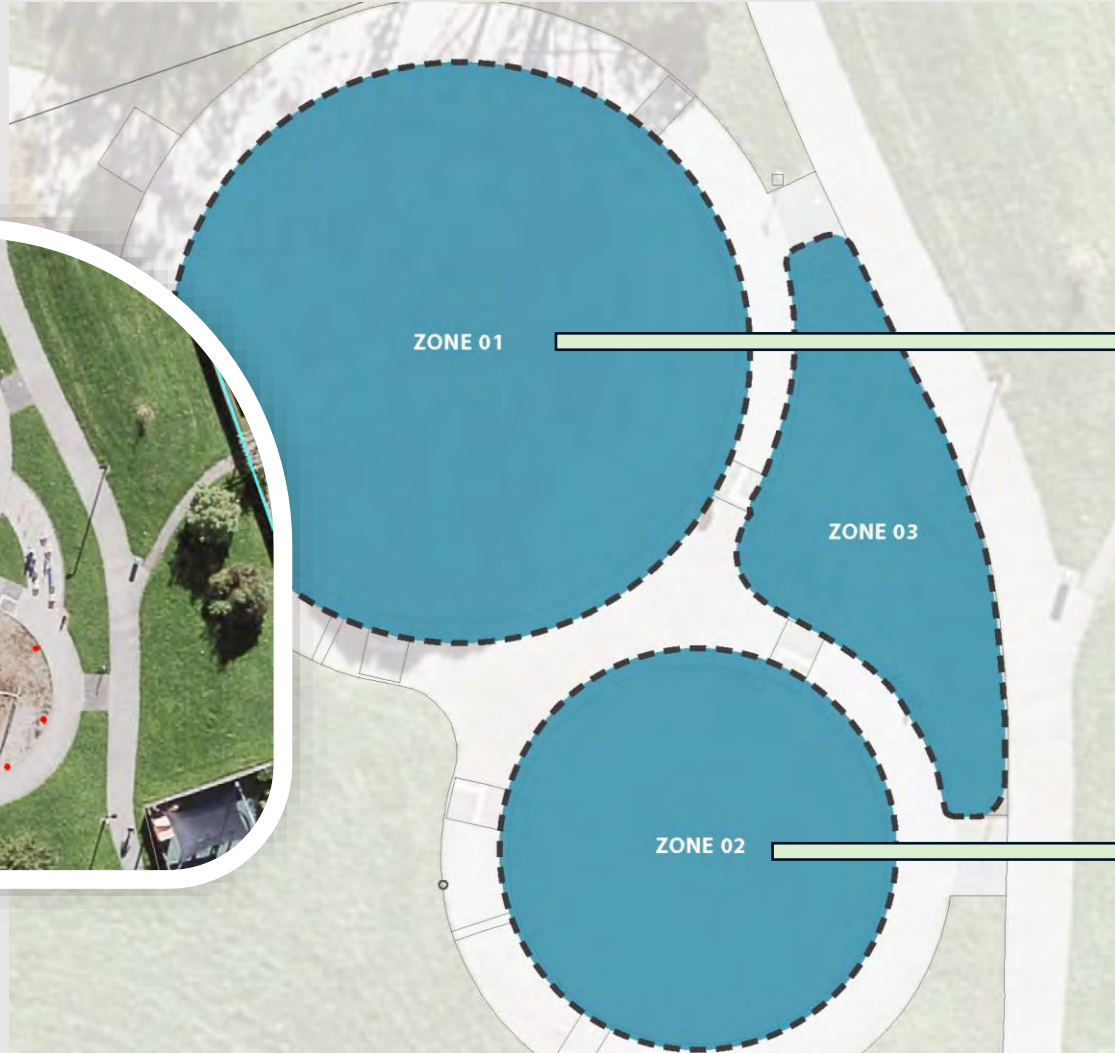


# Playground concept design development





# Playground concept design development





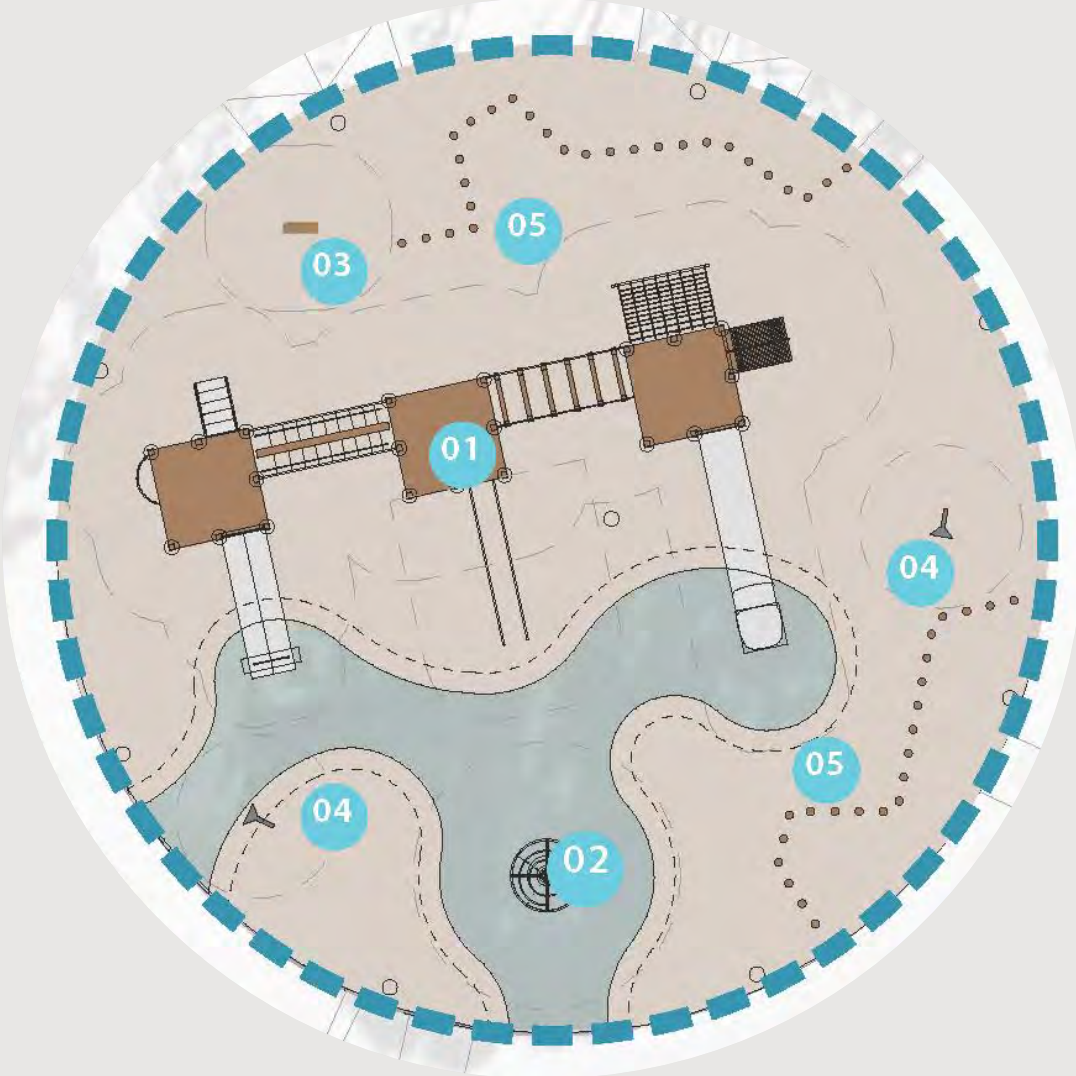
**PLAYGROUND**

**ZONE ONE**

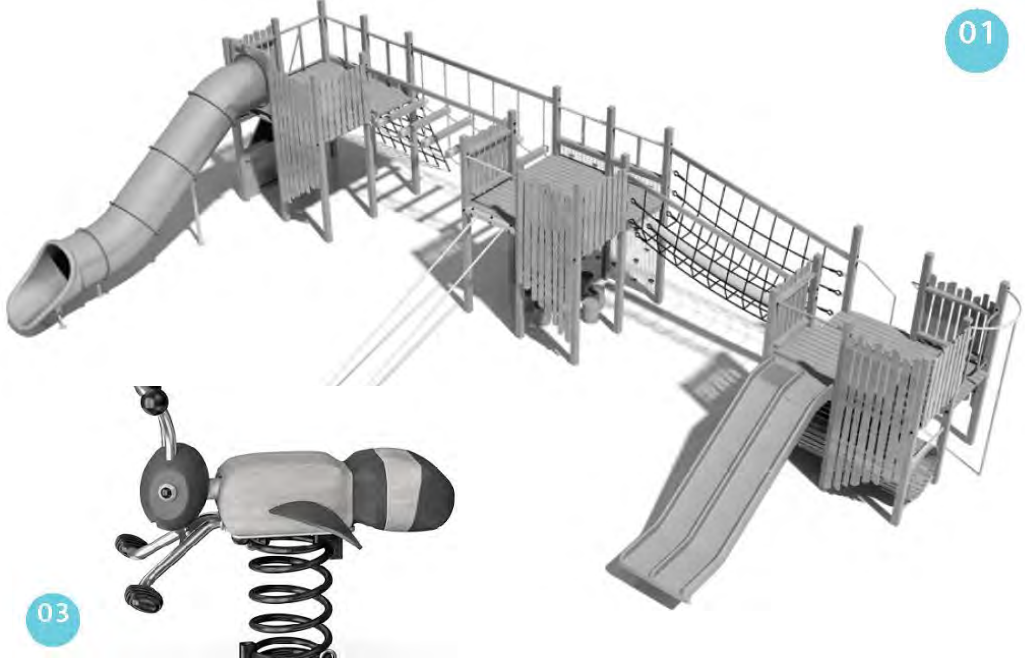




# ZONE ONE: CONCEPT ONE

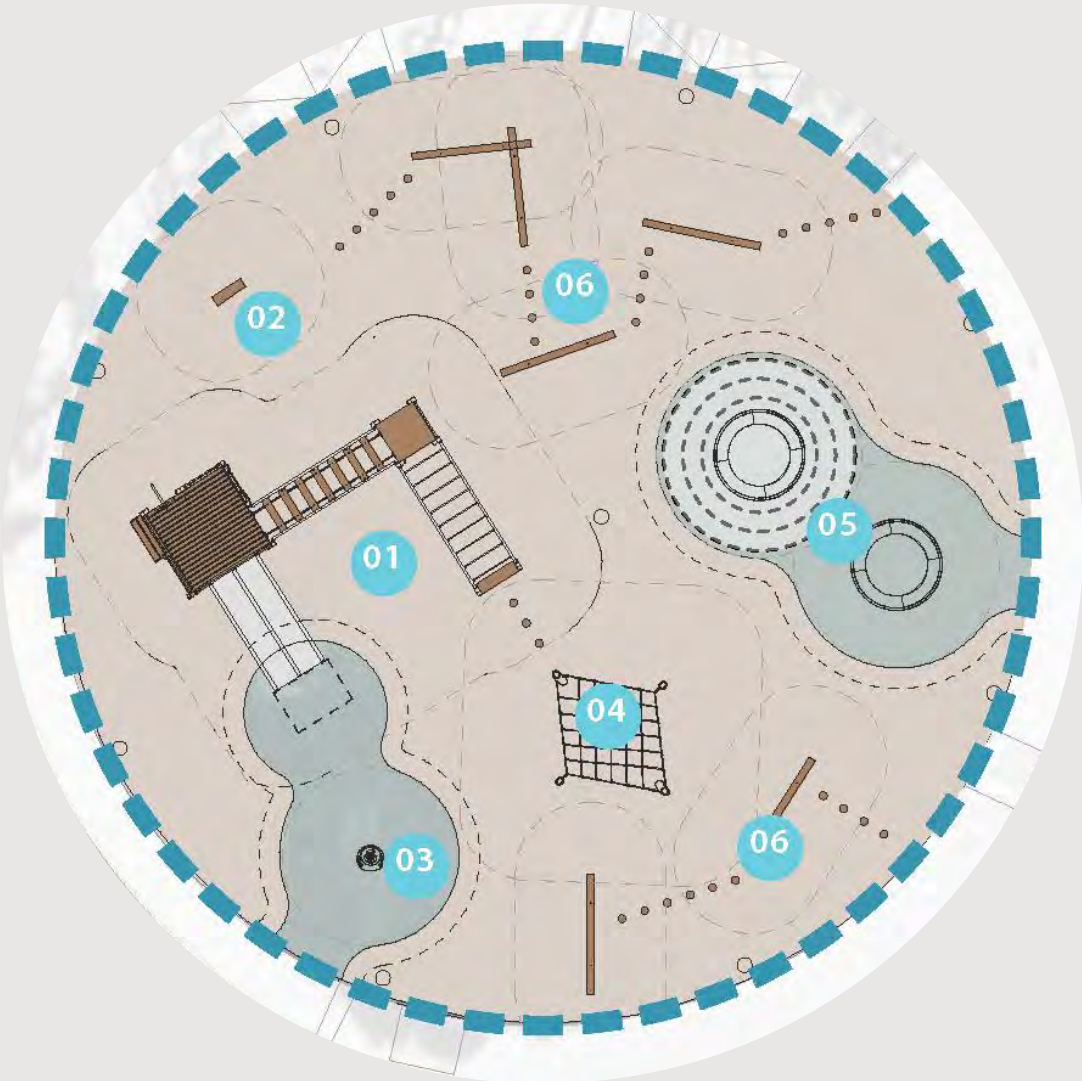


Play equipment (supply and install) - \$138,640



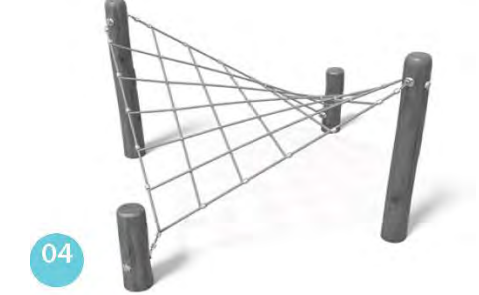


# ZONE ONE: CONCEPT TWO



Play equipment (supply and install) - \$129,800

## Proposed:





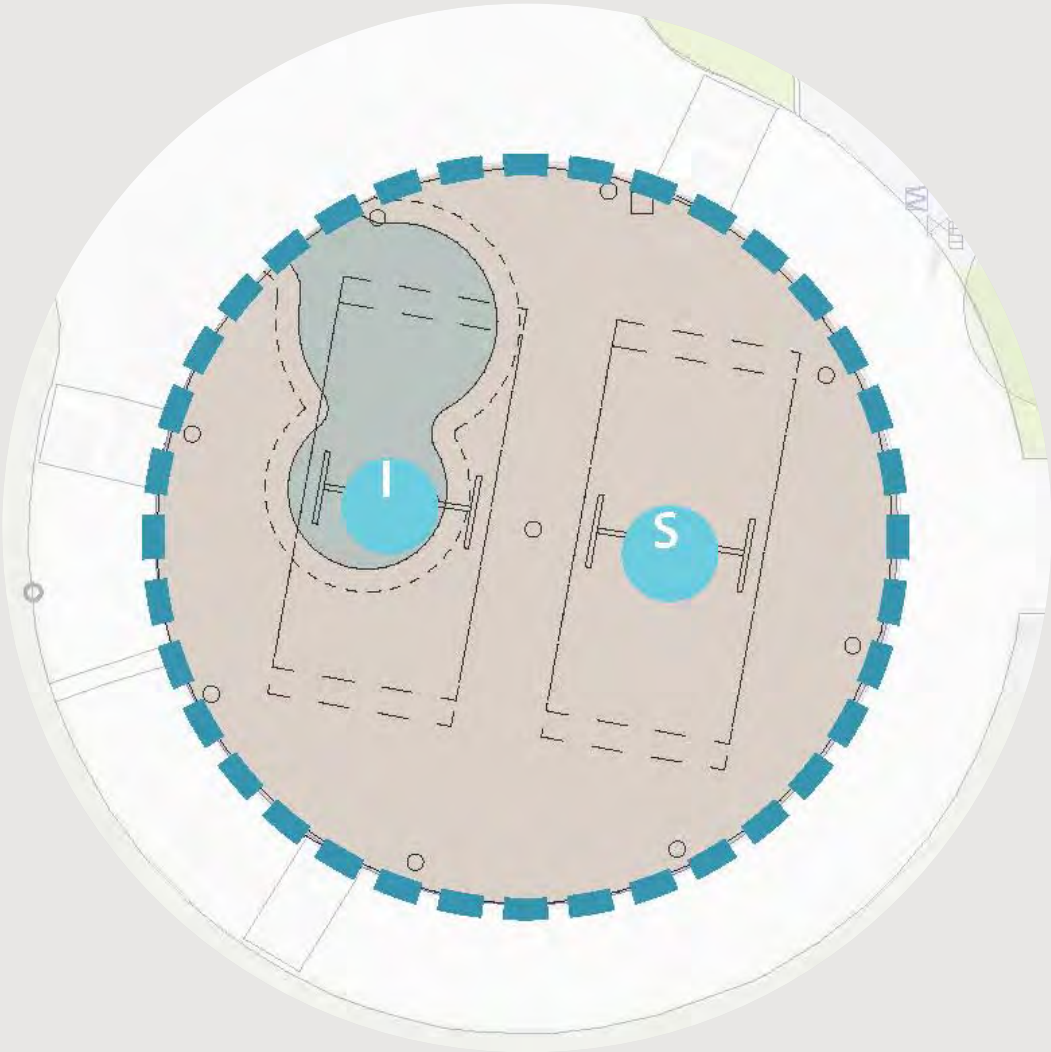


**PLAYGROUND**

**ZONE TWO**



# ZONE TWO: CONCEPT ONE



Play equipment (supply and install) - \$10,000

## SWINGS



Basket Swing



Toddler & Strap swing



# ZONE TWO: CONCEPT TWO



## SWINGS



You and Me & baby swing



Existing strap seats

Play equipment (supply and install) - \$10,000





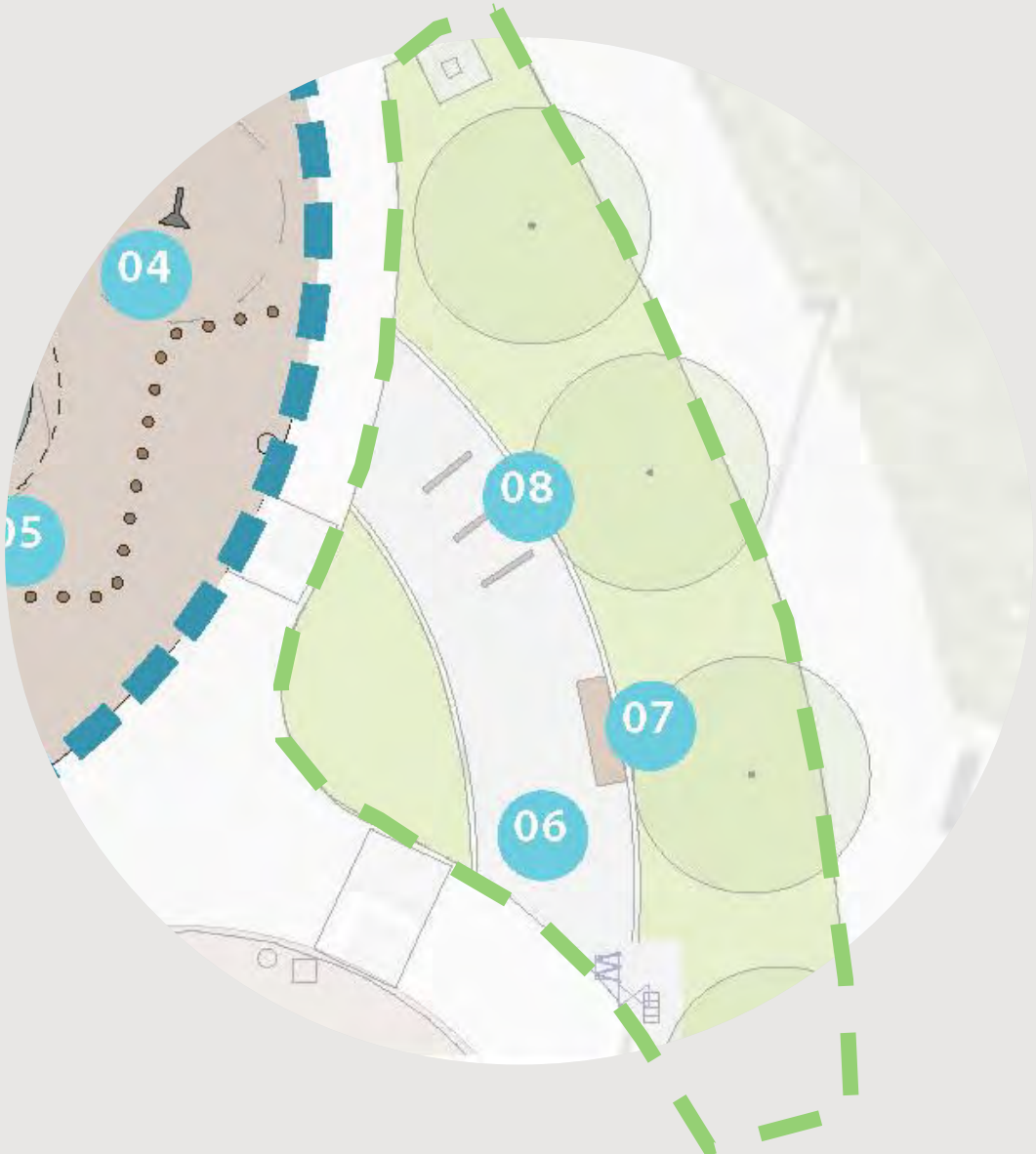
**PLAYGROUND**

**ZONE THREE**





# ZONE THREE - PASSIVE



Existing

Construction and furniture - \$14,162.00



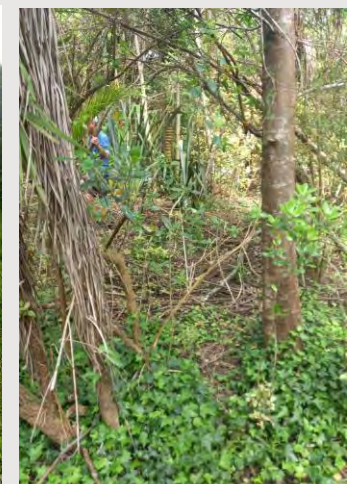


# NATURE PLAY

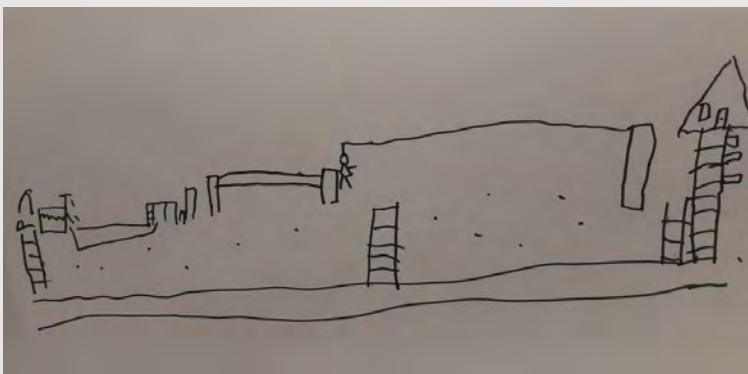




# NATURE PLAY







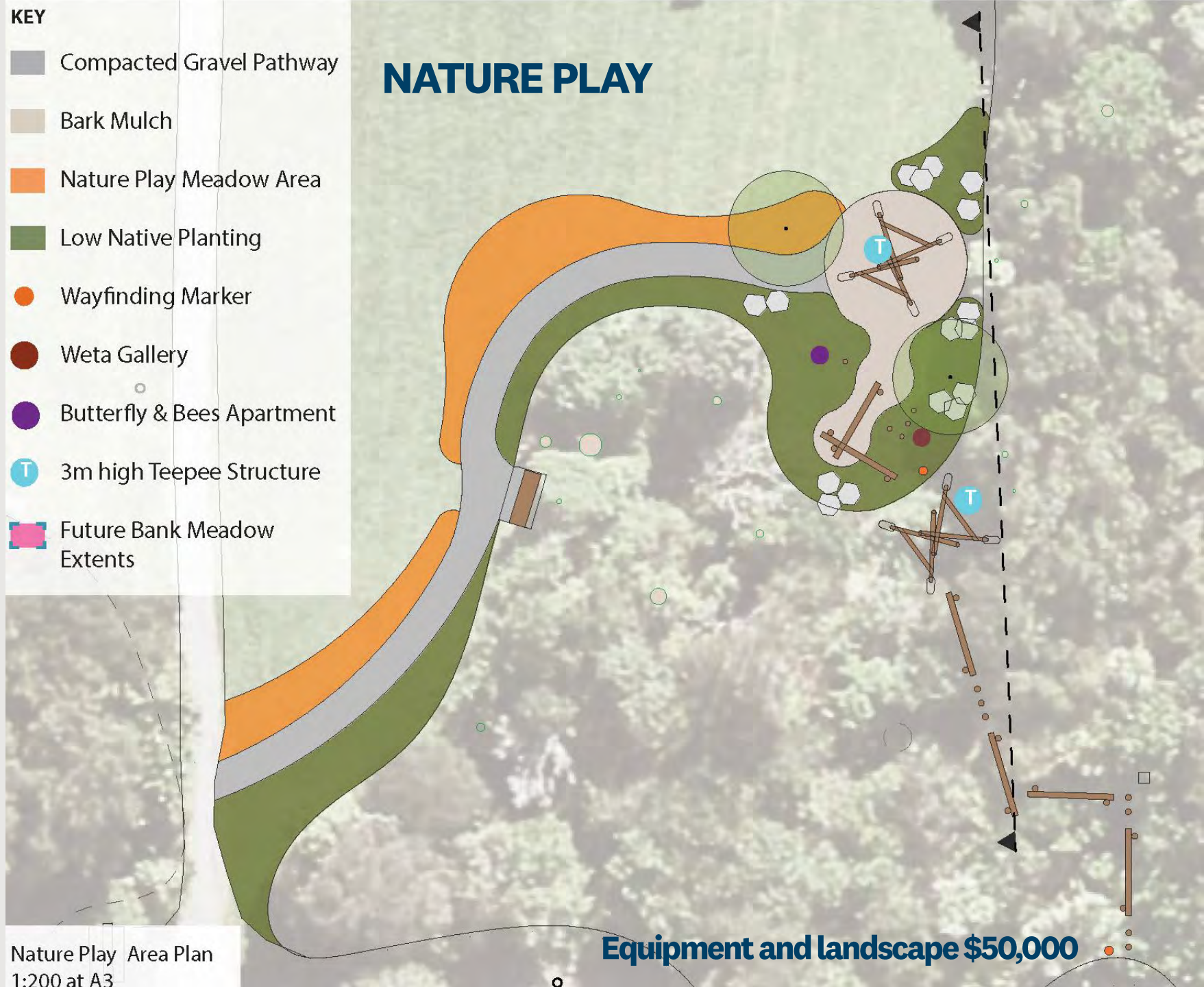
Nature Play Schematic Elevation  
1:75 at A3



**KEY**

-  Compacted Gravel Pathway
-  Bark Mulch
-  Nature Play Meadow Area
-  Low Native Planting
-  Wayfinding Marker
-  Weta Gallery
-  Butterfly & Bees Apartment
-  3m high Teepee Structure
-  Future Bank Meadow Extents

**NATURE PLAY**

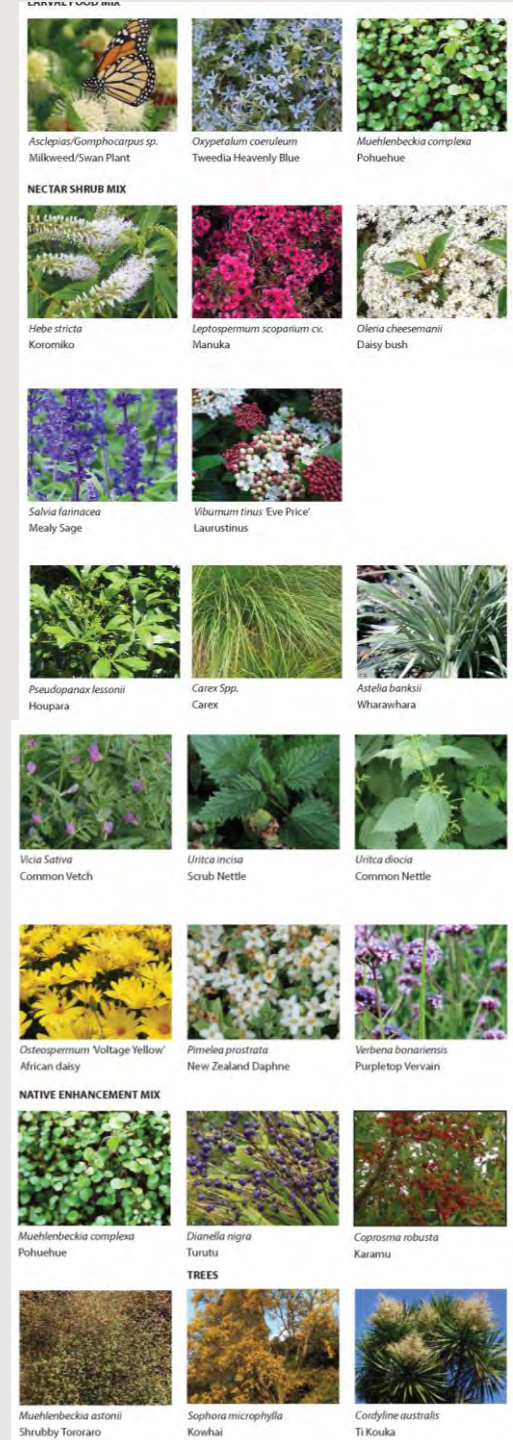


Nature Play Area Plan  
1:200 at A3

**Equipment and landscape \$50,000**



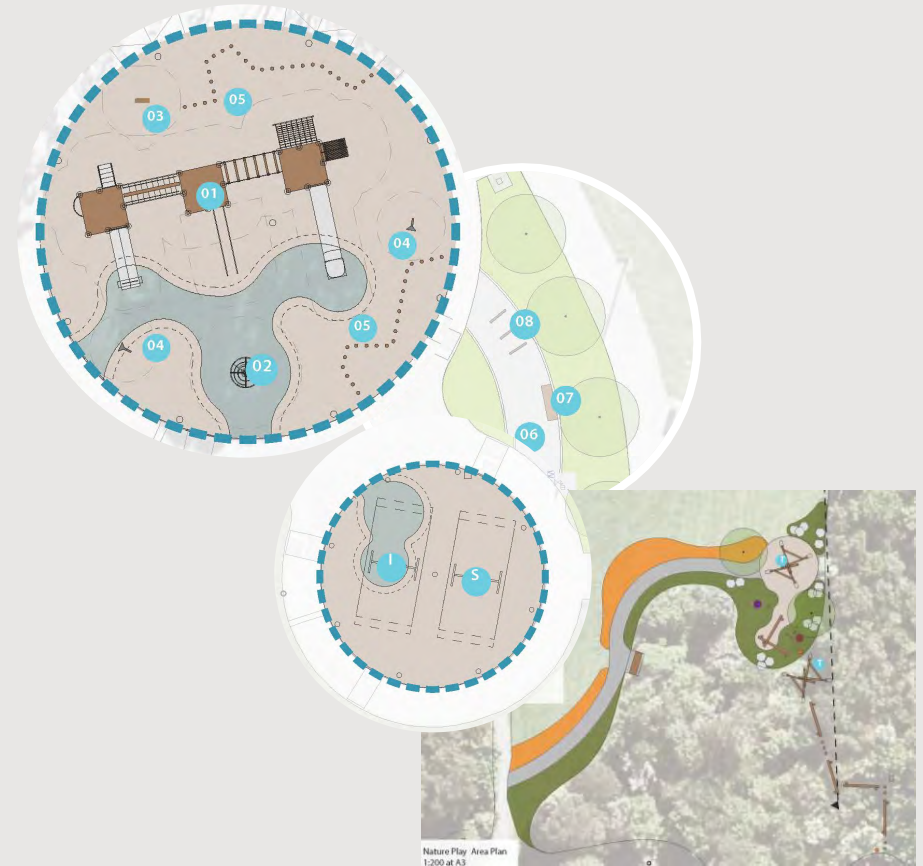
# NATURE PLAY – WILDFLOWER MEADOW POTENTIAL STAGE 2



**Estimate: \$18,000**

# Concept one – Cost estimate

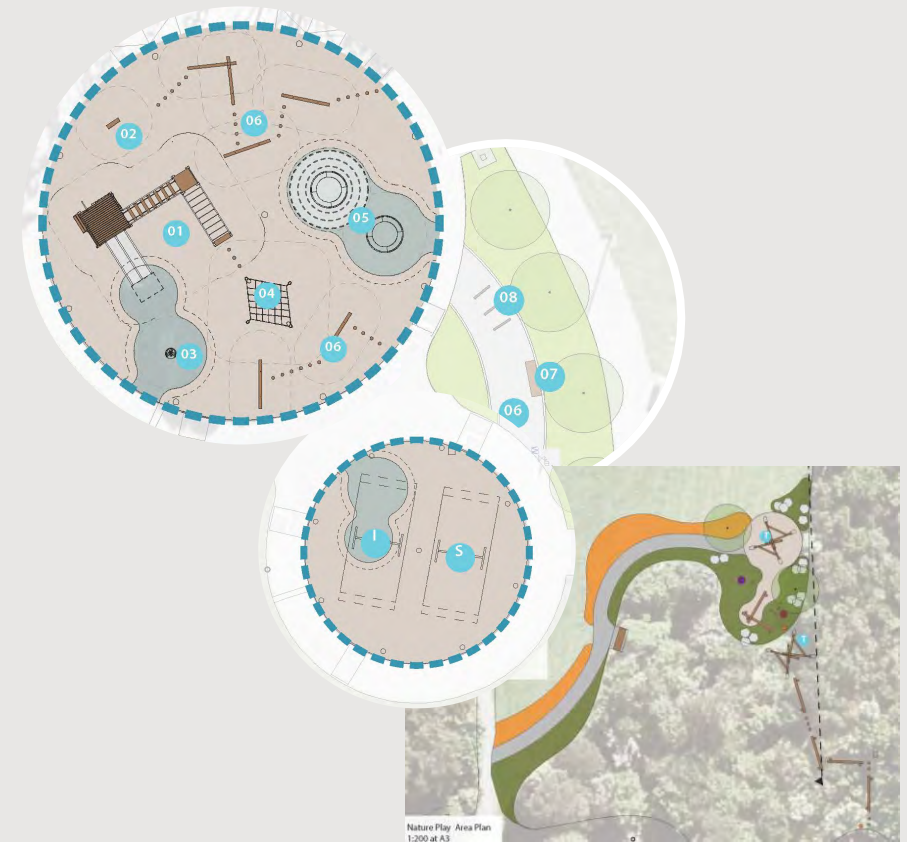
Item	Cost
<b>Physical works (including contingency and equipment)</b>	<b>\$346,854.22</b>
<b>Professional services (site investigations, design, project management)</b>	<b>\$72,520</b>
<b>Total</b>	<b>\$419,374.22</b>
<b>Budget</b>	<b>\$410,000</b>





# Concept two – Cost estimate

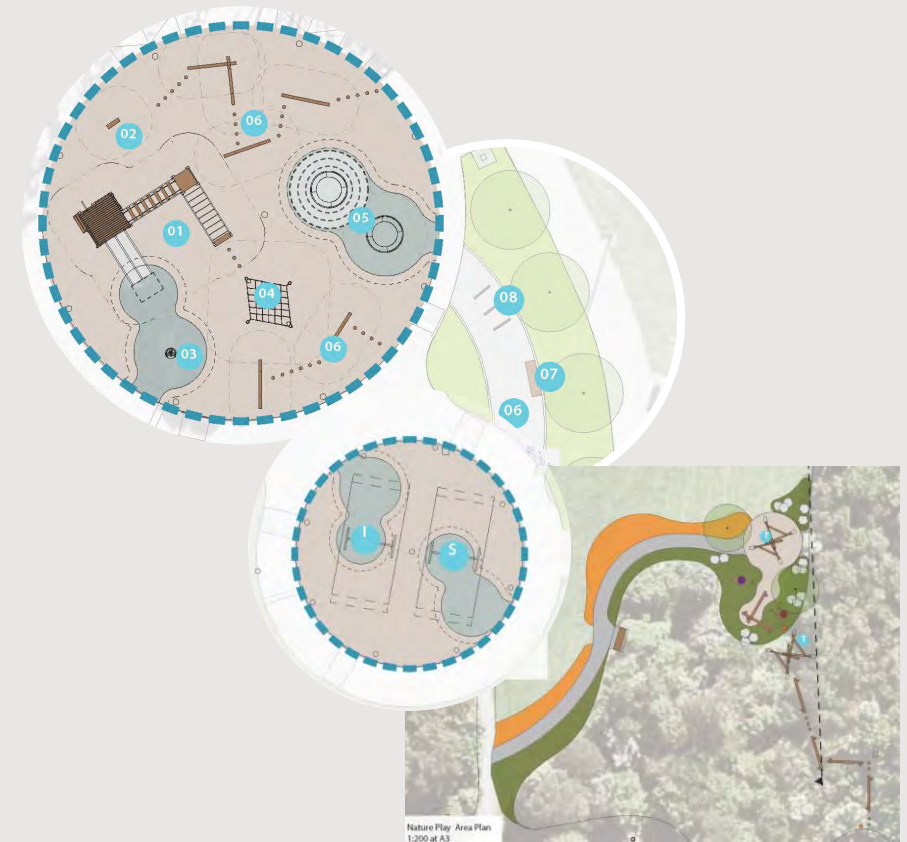
Item	Cost
Physical works (including contingency and equipment)	\$336,760.83
Professional services (site investigations, design, project management)	\$72,520
<b>Total</b>	<b>\$409,280</b>
<b>Budget</b>	<b>\$410,000</b>





# Concept two – Cost estimate + extra wet pour

Item	Cost
<b>Physical works (including contingency and equipment)</b>	<b>\$336,760.83</b>
<b>Professional services (site investigations, design, project management)</b>	<b>\$72,520</b>
<b>Total</b>	<b>\$409,280</b>
Extra wet pour in swing area	\$5,985.00
	\$415,265
<b>Budget</b>	<b>\$410,000</b>



## Next steps

**Community  
Consultation**

August/September  
2024

**Consultation  
review and  
report to local  
board**

October/November  
2024

**Consents &  
Detail design**

December – April  
2025

**Tender and  
construction**

August – December  
2025



**Matapopore**

**Local Board Portfolio Review**

Updated June 2024





# Overview

- We are reviewing every local board's service asset portfolio.
- The review will provide local boards with advice to support them with:
  - increased local board decision making
  - adjusting to financial allocations.



# Objectives

- Support implementation of the LTP 2024-2034 direction.
- Progress priorities and identify new opportunities.
- Manage underperforming and underutilised service assets.
- Support a shift from asset-dependant service delivery.
- Portfolios are safe, sustainable, affordable, and fit for purpose.



# Scope

## In scope

- Aquatic and leisure centres
- Arts and culture facilities
- Cemeteries (closed)
- Civic spaces
- Coastal assets
- Commercial and residential leases
- Community leases
- Community centres
- Council-run holiday parks
- Greenways and connection links
- Libraries
- Passive recreation spaces
- Sports parks
- Venues for hire

## Provision influencers

- Botanic gardens
- Cemeteries (open)
- Coastal assets
- CCO properties
- Corporate property
- Department of Conservation land
- Holiday parks
- Maunga
- Properties leased by Council
- Regional parks

## Out of scope

- Collections
- Social housing





# Examples of opportunities for change

Partnerships	new or enhanced
Investment	to address under provision of services or to improve current assets
Integration of services	or co-location
Decommissioning assets	to relieve cost burden
Divestment	through the service property optimisation framework
Non-asset service delivery	to reduce cost and increase accessibility to services



# Process – phase one



May - June 2024

July - December 2024

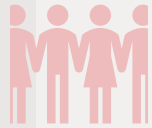
January - May 2025

July 2025 onwards

# Assessment areas



Financial performance



Usage



Asset lifecycle



Accessibility



Growth



Environment and cultural heritage



Local board priorities



Provision



Strategic alignment





# Outputs

## Phase 1

- Presentation to local boards of opportunities for change

## Phase 2

- Delivery of changes
- Development of Portfolio Plans

## Phase 3

- Implementation of Portfolio Plans

## Phase 4

- Monitor and review

Opportunities for change will be implemented through local board decision making



## Next steps

- Workshop opportunities with all local boards in preparation for FY25/26 work programmes



**Pātai?**





# Kaipātiki Local Climate Activation Programme

Programme update and funding recommendations

Anna Harrison, Low Carbon Specialist

31 July 2024



# Workshop Overview



Report on 2023/2024 work programme



Consider recommendations for 2024/2025 work programme



Agree 2024/2025 delivery approach







# Update on 2023/2024 Projects

The board allocated funding to two community climate action projects in the 23/24 financial year:

- **Travel Lightly Project** Kaipātiki Project \$7,500
- **Community Houses Climate Action Projects** Highbury House \$7,500

<p>3. Ikiiki Transport</p>		<p>Champion opportunities for improved active travel within the forthcoming update to the Kaipātiki Connections Network Plan (for example, Wairau Road and Albany Highway).</p>
<p>6. Ngā kai Food</p>		<p>Support community-led low carbon food initiatives such as community gardens, markets, cooking lessons, plant-based meal choices, community fridges and urban farm projects, such as those set out in the Kaipātiki Naturalisation of Parks Service Assessment.</p>







**Kaipātiki Project**

share in nature's revival

# Travel Lightly Project







**Kaipātiki Project**

share in nature's revival

**Growing a sustainable future  
for people and nature.**

---

**Kaipātiki Project is an environmental  
charity where volunteering is at the  
heart of everything we do.**







# Project Delivery 2024/25

8 events – mix of bike repair and biking activations



**Kaipātiki Project**  
share in nature's revival



# Comms and Engagement



## Embark on a journey that treads lightly on our planet



Your go-to destination for sustainable transport insights and inspiration. Discover planet-friendly alternatives for your daily commute. From cycling and walking to public transit and electric vehicles, we've got the lowdown on sustainable options that make your commute a breeze.

### QUICK LINKS

- Ride-to-work benefit scheme
- Learn on workplaces support / sustainable commuting
- Register your bike with 629 Garage Antares
- Bike Kāpiti
- Bike Auckland
- Auckland bike hubs
- NZTA cycling info

### LOVE TO RIDE

Join the nationwide biking challenge in February! It's open to all – whether you're a daily rider or haven't hopped on a bike in years. Ride anywhere, anytime for a fun and free competition! Prizes to be won!

## Tips for earth-friendly travel

Uncover practical tips to make your journeys greener. Learn about fuel-efficient driving, carpooling strategies, and how to plan eco-conscious road trips. Small changes make a big impact.

**Bicycles:** Biking is a zero-emission mode of transport that promotes personal health and reduces air pollution. Electric bikes (e-bikes) are also gaining popularity for longer commutes. Dust off your bike, get a second-hand option or find a bike repair shop near you.

**Public transport:** Buses and trains are energy-efficient modes of transportation that reduce the number of individual vehicles on the road, lowering overall carbon emissions. Use AT's Journey Planner for all public transport options. **Did you know that public transport is free for kids under 13?** Read more here.



**Walking:** The most eco-friendly mode of transport, walking has zero environmental impact and promotes a healthy lifestyle. If your destination is close enough, give it a try to see how long it takes you.

**Carpooling:** Sharing rides with others helps reduce the number of vehicles on the road, easing traffic congestion and decreasing individual carbon footprints. Ideal for everyday journeys, such as commuting to work or coordinating drop-offs for kids' activities.

**Electric vehicles (EVs):** EVs produce fewer emissions compared to traditional vehicles, contributing to improved air quality. As the charging infrastructure expands, more people are making the switch to electric cars.

**And more:** Car sharing, electric scooters...

## Join us



### Secure bike parking at Beachhaven Fun Run

10th of March 2024

We're thrilled to be working with Bike Kāpiti and taking another step towards sustainable transport for the upcoming Beachhaven Fun Run event on 10 March. Thanks to our partnership with Bike Kāpiti, Kaipātiki Local Board and Auckland Council, we're now able to offer secure bike parking facilities for all the...



### EcoFest: Pop-Up Bike Repair

7th of April 2024

Cycle on down to visit (Birkenhead) Library and make the most of a FREE bike repair, courtesy of Bike Kāpiti! Join the Funāhoi Orit Whāngai workshop while you're here.

No registration required. Organiser: Bike Kāpiti

Kia ora and thanks to our funders and partners, who make it all possible!



# Kaipātiki Project

share in nature's revival





# Key Achievements and Learnings

---

- Kaipātiki Project and Bike Kaipātiki have developed a strong partnership which will support all future activities - KLB seed funding has been critical in leveraging regional investment
- Partnership with the Wairau Zero Waste Hub – bike fix events - well supported by volunteer mechanics from the community
- Sports clubs are interested in addressing their transport, we have made good connections with leaders in their organisations
- We need to engage at the right time, by the time the project was up and running the season was underway making it challenging to deliver activations
- We now better understand what sports clubs need and are ready to engage for future seasons



# Community House Climate Action

The **Sustainable Places Approach** is a framework for benchmarking and progressing sustainability action in community-led spaces across Auckland.

**The Community Houses each planned their actions based on the five pou:**

Te Tiriti, Zero Waste, Community Resilience, Kai for All and Carbon Zero.

\$1,300 per community house and \$1,000 umbrella funding



<https://livelightly.nz/sustainable-places-scorecard/>



# Glenfield Community House

## Community Resilience and Kai for All

Two Sustainable Cooking Classes delivered by Oak and Thistle.

One open to the community, the other with the English Language Partners ESOL class. Participants learnt how to reduce their carbon footprint by preparing healthy, plant-based food from affordable, fresh ingredients.



# Birkdale and Beach Haven Community Houses



## Zero Waste and Community resilience

- Building a bigger and better pātaka kai
- Replacing two community libraries/book swap cupboards
- Building a Recycling Unit for the community to drop off items that cannot go in landfill or kerbside recycling





# Highbury House

## Community Resilience and Kai for All

Three sustainable cooking classes delivered by Oak and Thistle

*“I really enjoyed the workshop and when I went home the following weekend my friends and I made excellent mozzarella for a fraction of the price of authentic mozzarella”*



# Bayview Community House

## Community Resilience and Kai for All

3 workshops delivered by Kaipātiki Project

- Gardening with Kids
- Getting Started Growing Food
- Container Gardening

*“The kids enjoyed the hands-on format, as during the session we divided and potted up some strawberry plants into individual pots, which we got to take home. We brought these home and ours have sprouted and grown!”*



Bayview Community Centre

## GARDENING WITH KIDS

Saturday 13th April 10am-noon

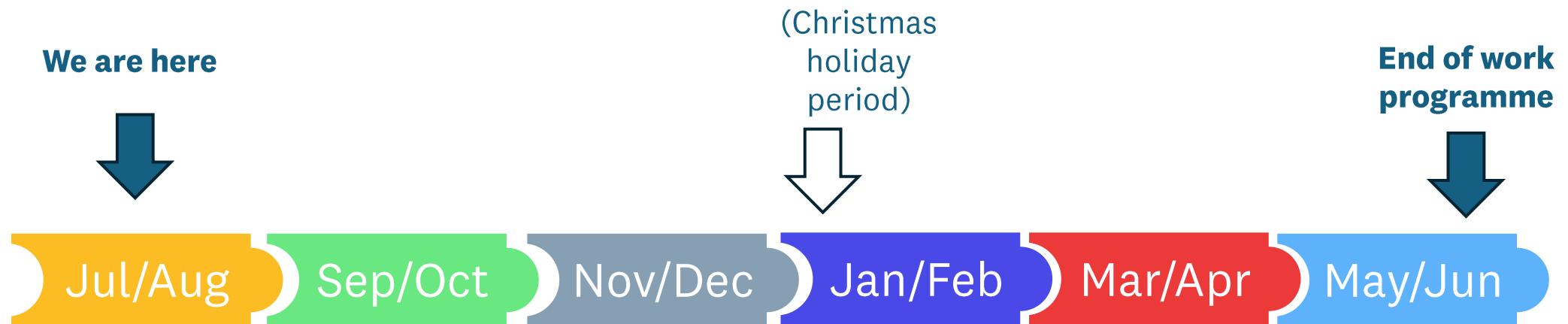
The whole family will be inspired to get into the garden after attending this FREE workshop hosted by the Kaipatiki Project! Come along to the Bayview Community Centre with your child (one caregiver for every two children participating) and be ready to get your green thumbs mucky. Scan the QR code below for tickets; maximum 20 participants.

For more details:  
Bayview Community Centre, 72 Bayview Road.  
[community@bayviewcentre.org.nz](mailto:community@bayviewcentre.org.nz)



# Timeline

## 2024/2025 work programme





# Local Climate Action Activation Programme

## Options for Funding



**Option A**

Continue to fund Travel Lightly  
**\$7,500**

Continue to fund Community House Climate Action  
**\$7,500**

**Option B**

Increase funding to Travel Lightly  
**\$10,000**

Continue to fund Community House Climate Action  
**\$5,000**

**Option C**

Increase funding to Travel Lightly  
**\$15,000**

Stop funding Community House Climate Action  
**\$0**

