

Waiheke Local Board Workshop Agenda

Date of Workshop: Wednesday 3 July 2024

Time: 10.30am

Location: Waiheke Local Board, 10 Belgium Street; MS Teams

Time	Workshop Item	Governance role	Purpose	Presenter(s)	Proposed Outcome(s)
10.30	Item 1 Mātiatia lease	Keeping informed	Informal dissemination	Thomas Goehring <i>Principal Property Manager, Strategic Development Programmes and Property, AT</i>	Members will be informed about eRide's proposed lease agreement amendment at Mātiatia
11:30	Item 2 Waiheke Island Shoreline Adaptation Plans Attachment Presentation	Keeping informed	Informal dissemination	Kartik Bhat <i>IES Relationship Advisor</i> Matt Rivers <i>Senior Coastal Engineer</i>	Members will be informed about the Shoreline Adaptation Plans
12:15	Lunch Break				

12.30pm-1.30pm – Meeting with MSD, Mark Goldsmith, Regional Commissioner for Auckland Central / East *separate from workshop session*

An opportunity to understand the focus within our community, including any regular issues or complexities that the community may be facing, share priorities, provide benefit fact sheets and to see if there are opportunities to partner better, or to answer any questions that you may have as a board that will support you in your mahi.

Time	Workshop Item		Governance role	Purpose	Presenter(s)	Proposed Outcome(s)
13:30	Item 3	Community Facilities and Parks Update Attachment June 2024 update	Keeping informed	Review progress with projects	Shane Hogg <i>Manager Area Operations</i> Bridget Velvin <i>Facilities Manager</i> Sue Gluskie <i>Facilities Coordinator</i> Jacqui Thompson-Fell <i>Parks & Places Specialist</i> Elvira Kolmychenko <i>Work Programme Lead</i>	Members are updated on CF projects and activities in the months of June and progress of various programmes.

Governance Role

1. Accountability to the public
2. Engagement
3. Input to regional decision-making
4. Keeping informed
5. Local initiative / preparing for specific decisions
6. Oversight and monitoring
7. Setting direction / priorities / budget

Role of Workshop:

- (a) Workshops do not have decision-making authority.
- (b) Workshops are used to canvass issues, prepare local board members for upcoming decisions and to enable discussion between elected members and staff.
- (c) Workshops are not open to the public as decisions will be made at a formal, public local board business meeting.
- (d) Members are respectfully reminded of their Code of Conduct obligations with respect to conflicts of interest and confidentiality.
- (e) Workshops for groups of local boards can be held giving local boards the chance to work together on common interests or topics

Shoreline Adaptation Plans: Waiheke Local Board

June 2024



Shoreline Adaptation Plans

Today's presentation

Content:

- Shoreline Adaptation Plans & Programme update
- Tranche 5: Waiheke Island, & Hauraki Gulf Islands dates and plan development



Shoreline Adaptation Plan RECAP



Why?

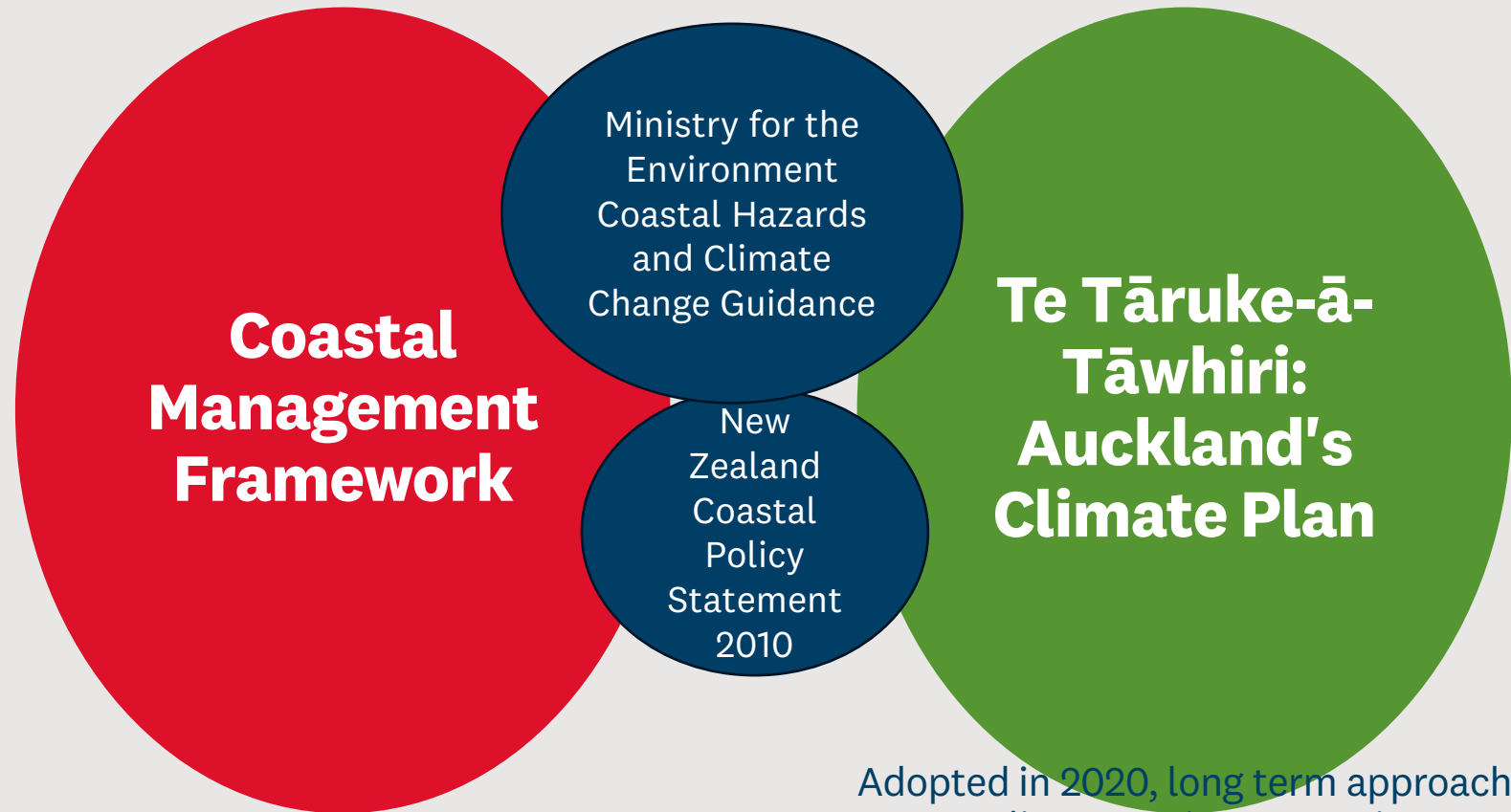
Coastal hazards are increasing, and rate of change will increase into the future due to sea level rise combined with natural processes.

Shoreline Adaptation Plans set long-term strategic direction for coastal management:

- working towards sustainable future management approaches
- projects apply a joined-up approach for each section of coast
- apply consistent decision-making
- better prepared to respond to future extreme events



Policy framework for our shoreline adaptation plans



Adopted in 2017; identified the need for long term planning for how we manage our coasts

Adopted in 2020, long term approach to climate action. Preparing Auckland for the impacts of climate change



Scope: Auckland Council & Council Controlled Organisation assets at the coast

Public facilities
(playgrounds, toilet blocks, community halls, libraries)

Stormwater, drinking water & wastewater infrastructure

Walkways, Roads, Cycleways, etc.

Council owned land & assets

Esplanade reserves



Regional parks



Coastal structures



Public beaches



What are we doing?

Purpose

Developing a series of Shoreline Adaptation Plans (20) for Council owned Land and Assets

We need to Adapt

Sustainable coastal management
Strategic & holistic decision making
for council owned land & assets

Non-statutory
plans

Living
documents
(long
timeframes)

Council owned
land & assets
only (not
private land)



How will we use them? Implementation

Local implementation, from now:

- directs **operational responses** (post storm, maintenance)
- preferred options within **Coastal Renewals Programme** (where existing budget available)
- supports regional **Coastal Asset Management Plan** and risk-based decision making.
- Inform future statutory plans and processes e.g. **LPMP**

Regional implementation, from mid-2025**:

- **Regional risk-profile**
- **Future funding** requirements
- **Prioritisation schema** for future works.

** following completion of all area plans



The Shoreline Adaptation Plan development process



How do we develop the plans?

**Technical
information**

Coastal hazards & climate
change

Risk

Social, policy ecological and
cultural context

**Values from
Mana
whenua**

Values

Sites of significance &
value

Te Ao Māori

**Community
Values**

Values

Uses

Experiences





Technical information

Workshops with asset owners

- Council teams & departments
- Council controlled organisations (CCOs)

Supporting reports:

- Social, cultural & ecological context
- Coastal processes

Risk Assessed:

- Exposure & vulnerability
 - council owned land and assets
- ecological areas
- historic and cultural heritage



Mana whenua

The work programme includes:

- Regional discussions with the I&ES Mana Whenua Forum
- Local iwi engagement on each area based plan
- Governance discussions with Te Pou Taiao

REGIONAL SCALE

I&ES Kaitiaki Forum Principles

- Responsive to iwi management plans
- Accept reversal of infrastructure to rectify hazard issues
- Naturalise, let nature take its course
- Look at emissions as well (if any)
- Whenua concepts are written up and understood by all in plans
- Protect koiora (biodiversity) and traditional mahinga kai (fish stocks, kaimoana)
- Protect heritage where possible.

Programme principles

Manaakitanga

Mātauranga

Kaitiakitanga / Tiakitanga

Ōritetanga

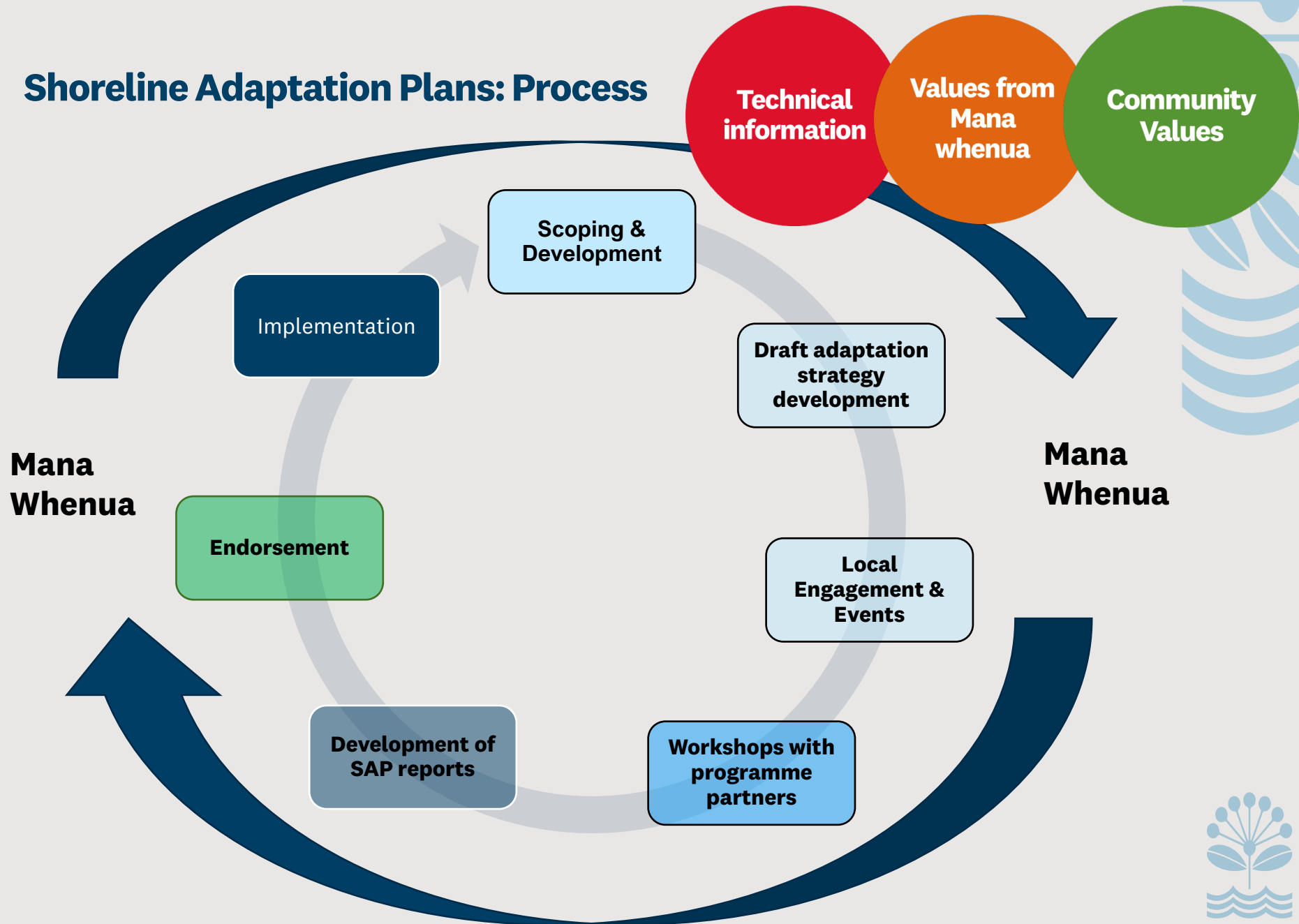
Whanaungatanga

Tōnuitanga

Rangatiratanga



Shoreline Adaptation Plans: Process



Adaptation Strategies & Pathways

No Active Intervention



Allow natural processes to continue



Hold the Line



Defend the current coastline

Limited Intervention



Support existing



Managed Realignment



Move assets and infrastructure back

Natural hazards and climate change (uncertainty)

Short
Next 20 years

Medium
20-60 years

Long
60-100+ years



Strategy	Description of approach
No Active Intervention (NAI)	<ul style="list-style-type: none"> • Natural processes are allowed to continue. • Includes no investment in the provision or maintenance of any hazard protection structures associated with coastal hazards and flood protection (does not apply to the management of land stability or subsidence or other hazard risk management) • This strategy is identified for areas of the coastline where council owned land and assets are not exposed/vulnerable to coastal hazard and catchment flooding risk.
Limited Intervention (LI)	<ul style="list-style-type: none"> • Generally focussed on nature-based solutions. • Works may be undertaken to repair existing protection structures for the purpose of extending the asset's life. • Works may support localised realignment of individual asset classes. • Does not support a fixed coastline
Hold the Line (HTL)	<ul style="list-style-type: none"> • The coastal edge is fixed at a certain location. • Defence of the coastal edge may be through nature-based options (e.g. beach nourishment) or engineered hard structures (e.g. sea walls). • Nature-based options are the preferred method where possible, but in most cases engineered hard structures would be required. • An identified use or service is maintained within its existing location. For example a road is maintained in a fixed location or Parks land uses are maintained in an existing location. • This approach could result in losing some intertidal areas or beach space due to preventing a landward realignment of the coast in response to sea level rise.
Managed Retreat (MR)	<ul style="list-style-type: none"> • Assets and land uses are relocated or realigned from hazard-prone areas to reduce risk to assets and maintain identified values (ecological, cultural, recreational etc). • Relocation is planned and undertaken proactively over time. • Planning to retreat or relocate assets and land uses are responsive to community, cultural and ecological opportunities needs and aspirations. • Supports opportunity for nature-based solutions, and maintenance of coastal values.

Shoreline Adaptation Plans: Adaptation Strategies



Example

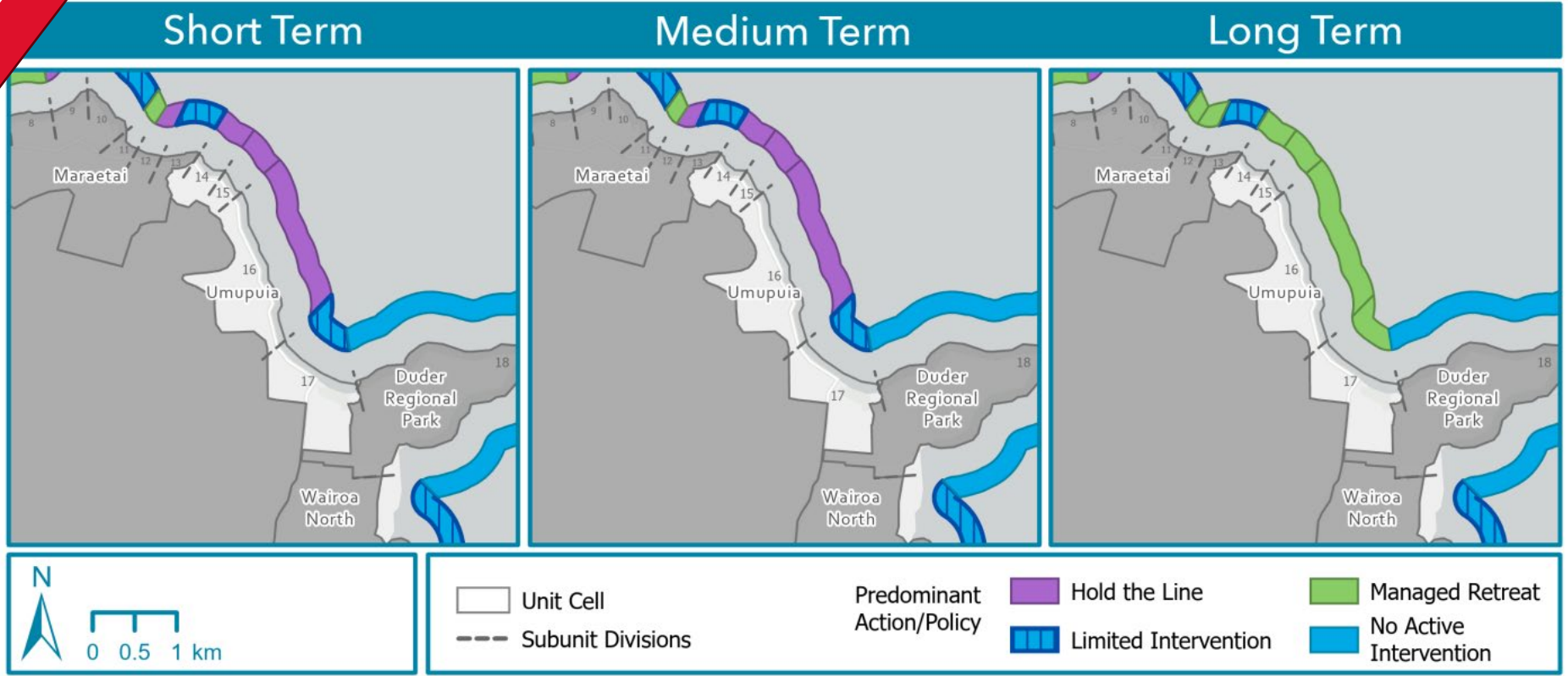


Figure: Example of adaptation strategies for coastal stretches within the Beachlands & East SAP - Umupuia unit area



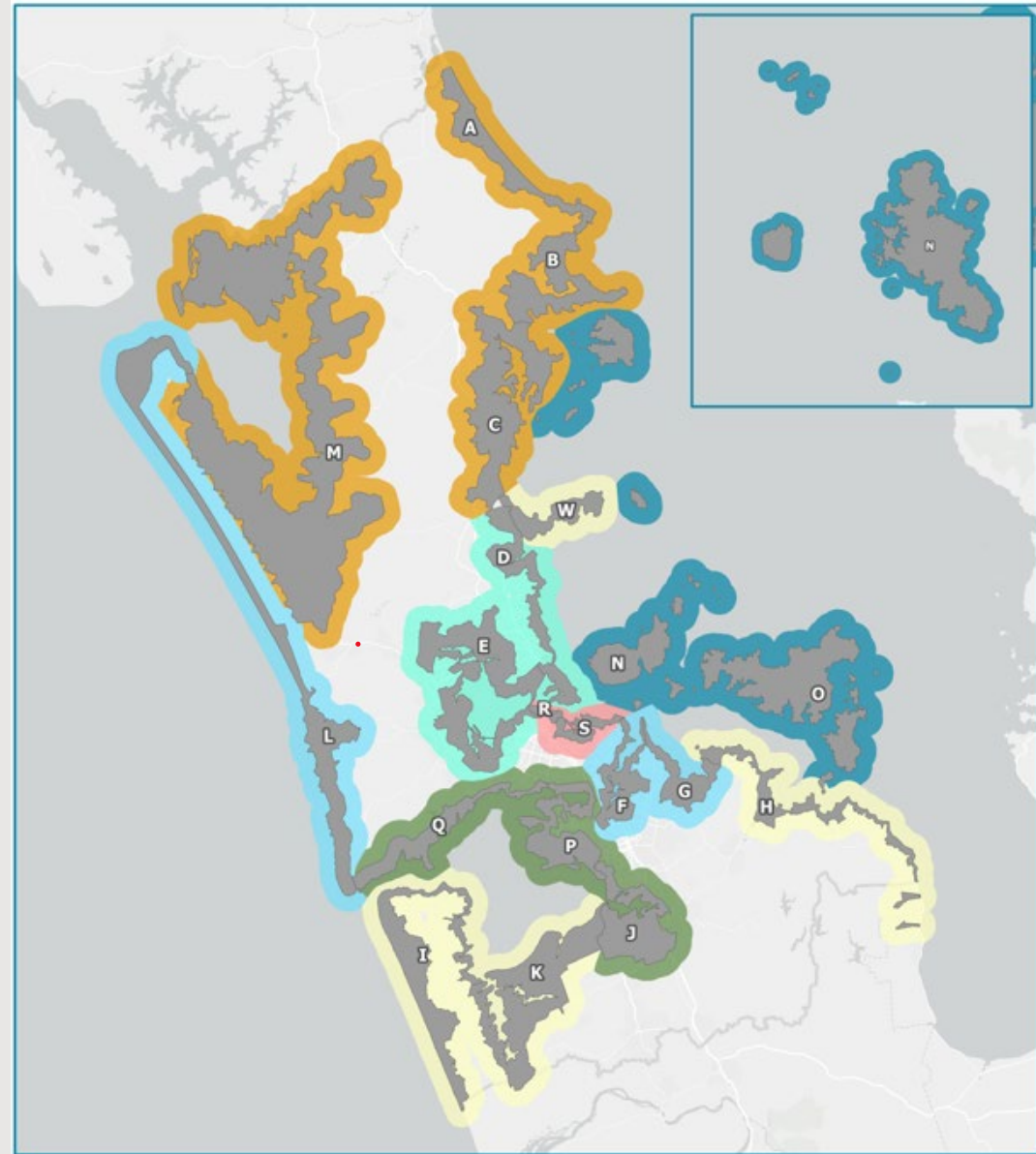
SAP Plans for Waiheke & Hauraki Gulf Islands

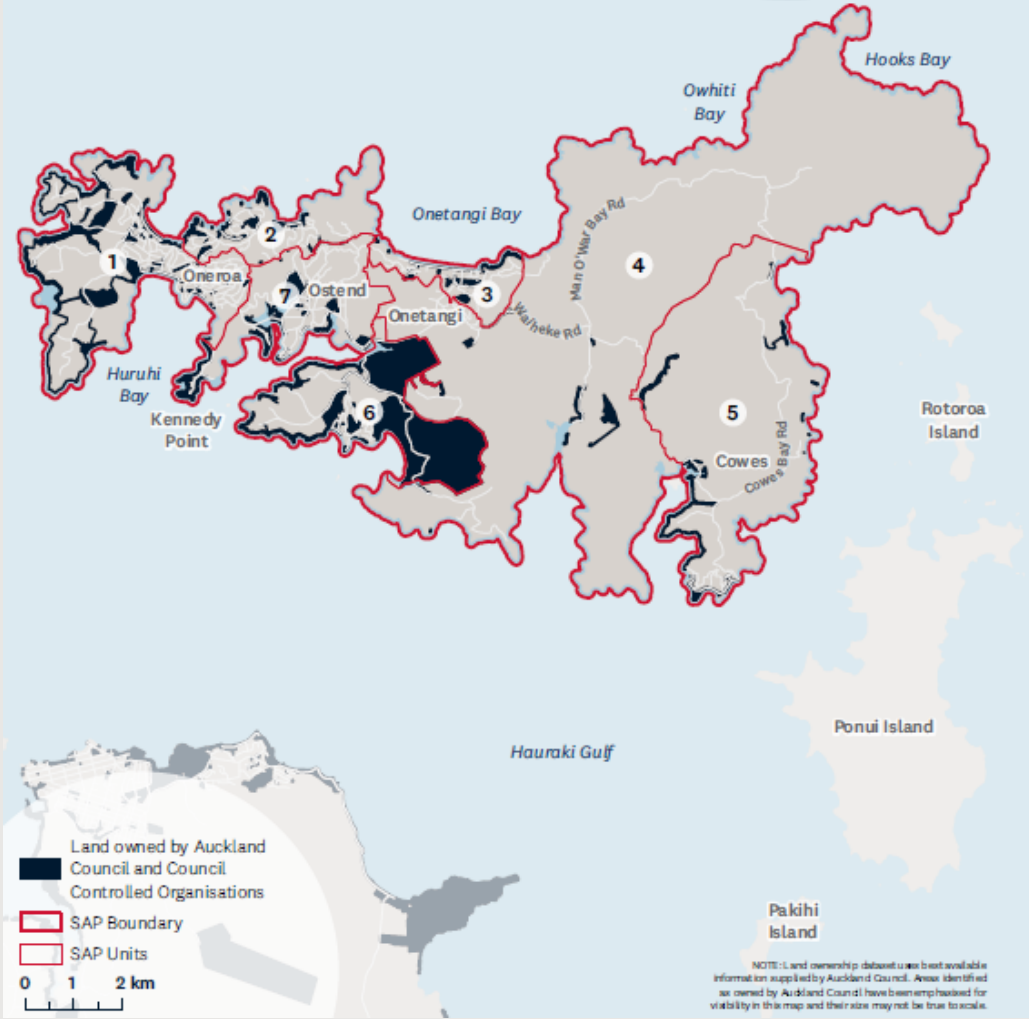
Tranche 5: Waiheke & Hauraki Gulf Islands



Regional sequence of SAP Areas

- 2021 - 2023 Whangaparāoa, Kahawairahi ki Whakatiwai/Beachlands & East, Manukau South & Āwhitu (W, H, I, K)
- 2023 -2024: Pahurehure Inlet, Manukau East , Manukau North (Q, P, J)
- November 2023 – Mid 2024: Whatipu to South Head, (Bucklands Beach to Pine Harbour and Tamaki River Inlet) (L, F, G)
- January 2024 - July 2024: Kaipara Harbour, Pakiri to Mathesons Bay, Ti Point to Sandspit, Snells to Orewa (M, A, B, C)
- July – Early 2025: Weiti Estuary to Devonport and Waitematā Harbour (D, E)
- **July – Early 2025: Waiheke Island, Aotea Great Barrier Island & Hauraki Gulf Islands) (N, O)**
- Late 2024 - Mid 2025: Auckland Central, Orakei to Karaka Bay (R, S)





Waiheke Island (Tranche 5)

- Waiheke island

Community engagement:
7 August – 1 October

Local Board workshops:
Late 2024 - Early 2025

Endorsement:
Early 2025

NOTE: Land ownership data is to the best available information supplied by Auckland Council. Areas identified as owned by Auckland Council have been emphasised for visibility in this map and their size may not be true to scale.

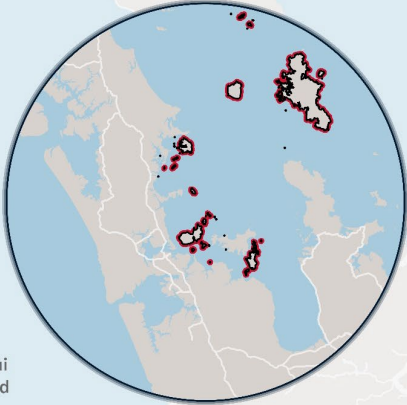
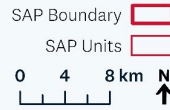


Area Overview

Aotea Great Barrier and the Hauraki Gulf Islands



Land owned by Auckland Council and Council Controlled Organisations



NOTE: Land ownership dataset uses best available information supplied by Auckland Council. Areas identified as owned by Auckland Council have been emphasised for visibility in this map and their size may not be true to scale.

Aotea Great Barrier Island & Hauraki Gulf Islands (Tranche 5)

Inner Gulf islands:

- Ponui
- Pakihi
- Rotoroa
- Pakatoa
- Rangitoto
- Motutapu
- Motuihe
- Motukorea (Browns island)
- Rakino
- The Noises (Motuhoropapa, Otata, etc.)

Community engagement:
7 August - 1 October

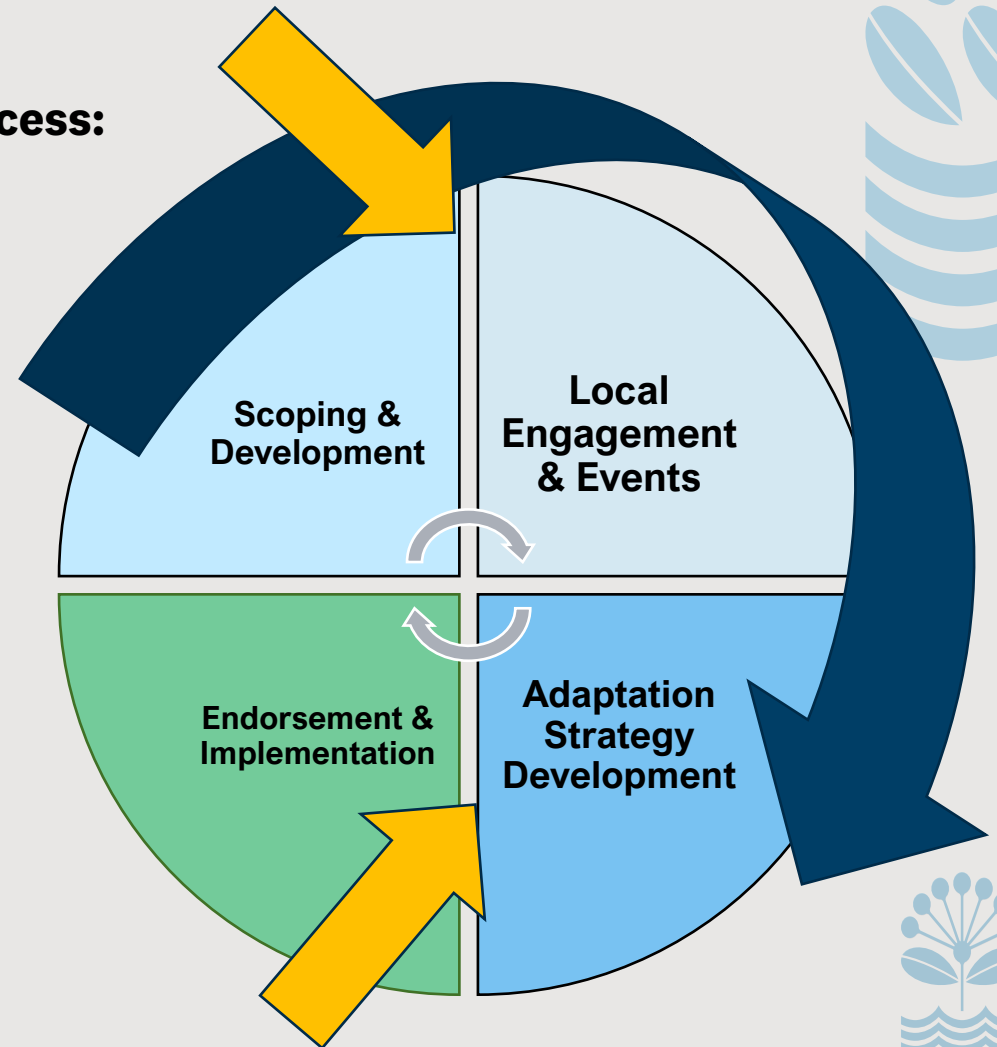
Local Board inputs



Shoreline Adaptation Plans: Process & Outputs

- Governance
- Stakeholder & community partner identification
- Community engagement
- Strategy review workshop
- Endorsement

Process:



Community engagement: 7 August – 1 October:

Digital engagement:

- Ak have your say
- Social Pinpoint

In person events:

- Libraries/markets/ferries/town hall/community centres
- Town hall style meetings
- Local channels & presence:
 - Our Auckland events and stories
 - Advertising via Auckland Council and Ecomatters
 - Signage in parks and beaches

Communities:

- Waiheke communities
- Wider Auckland coastal users

Stakeholders:

- Key groups & organisations
- Community groups



**Community
and
stakeholders**



Recap & next steps

- **SAP Team:** Adaptation strategy drafting
- **SAP Team + Eco matters & partners:** Event planning & promotion
- **Local Board (& advisors)** input to identify key community stakeholders
- **Local Board** Event attendance (7 August – 1 October)
- **Local Board** workshops on adaptation strategies (late 2024)



Pātai

Questions and discussion

