

Waiheke Local Board Workshop Agenda

Date of Workshop: Wednesday 5 June 2024

Time: 11:30

Location: Waiheke Local Board, 10 Belgium Street; MS Teams

| Time | Workshop Item | Governance role | Purpose | Presenter(s) | Proposed Outcome(s) |
|-------|--|--|---------------------------|---|---|
| 11:30 | Item 1 Alison Park Concept Plan | Keeping informed | Informal dissemination | Fiona Gregory <i>Community Broker</i> Michael Maahs <i>CEO, Waiheke Resources Trust</i> Jaqui Thompson-Fell <i>Parks & Places Specialist</i> | ?? |
| 12:00 | Item 2 Tawaipareira Reserve – Transfer station extension Attachments Presentation | Local initiative / preparing for decisions | Informal dissemination | Kartik Bhat <i>Relationship Advisor, Infrastructure & Environmental Services</i> Bret Dragt <i>Senior Waste Specialist Solutions</i> Greg James <i>Senior Waste Specialist Solutions</i> | Members will receive information about potential expansion of Community Resource Recovery Park |
| 1:00 | Lunch Break | | | | |

| | | | | | | |
|-------|---------------|---|------------------|-------------------------------|---|--|
| 13:30 | Item 3 | Community Facilities and Parks update Attachments Presentation | Keeping informed | Review progress with projects | Shane Hogg <i>Manager Area Operations</i> Bridget Velvin <i>Facilities Manager</i> Sue Gluskie <i>Facilities Coordinator</i> Jacqui Thompson-Fell <i>Parks & Places Specialist</i> Elvira Kolmychenko <i>Work Programme Lead</i> | Members are updated on CF projects and activities in the months of May and progress of various programmes. |
|-------|---------------|---|------------------|-------------------------------|---|--|

Governance Role

1. Accountability to the public
2. Engagement
3. Input to regional decision-making
4. Keeping informed
5. Local initiative / preparing for specific decisions
6. Oversight and monitoring
7. Setting direction / priorities / budget

Role of Workshop:

- (a) Workshops do not have decision-making authority.
- (b) Workshops are used to canvass issues, prepare local board members for upcoming decisions and to enable discussion between elected members and staff.
- (c) Workshops are not open to the public as decisions will be made at a formal, public local board business meeting.
- (d) Members are respectfully reminded of their Code of Conduct obligations with respect to conflicts of interest and confidentiality.
- (e) Workshops for groups of local boards can be held giving local boards the chance to work together on common interests or topics

Waiheke Local Board Workshop Proceedings

Workshop record of the Waiheke Local Board held in person and via Teams on Wednesday 5 June 2024, commencing at 11.30am

| Cath Handley (Chair) | | Kylee Matthews (Acting Chair) | Bianca Ranson | Robin Tucker | Paul Walden |
|----------------------|--|---|---|--------------|-------------|
| Absent (leave) | | Present | Present (Teams) | Present | Absent |
| Time | Workshop Item | Attendees(s) | Summary of Discussion | | |
| 11:30 | Item 1 Alison Park Concept Plan | Fiona Gregory <i>Community Broker</i> Michael Maahs, <i>CEO, Waiheke Resources Trust</i> Jaqui Thompson-Fell, <i>Parks & Places Specialist</i> | Members will receive information about the proposed community-led Alison Park Concept Plan Rescheduled due to illness | | |
| 12:00 | Item 2 Tawaipareira Reserve – Transfer station extension Attachment Presentation | Kartik Bhat <i>Relationship Advisor, Infrastructure & Environmental Services</i> Bret Dragt <i>Senior Waste Specialist Solutions</i> Greg James <i>Senior Waste Specialist Solutions</i> | Members received information about potential expansion of Community Resource Recovery Park Presentation gave an overview of the constraints of current site and the potential to improve the efficiency and safety of the facility and to increase opportunities for new initiatives. Members raised significant mitigating issues with this expansion namely the reserve status of the land in question. | | |
| 13:00 | Lunch Break | | | | |

| Time | Workshop Item | | Attendees(s) | Summary of Discussion |
|-------|---------------|--|---|---|
| 13:30 | Item 3 | Community Facilities and Parks update Attachments Presentation | Shane Hogg <i>Manager Area Operations</i> Bridget Velvin <i>Facilities Manager</i> Sue Gluskie <i>Facilities Coordinator</i> Jacqui Thompson-Fell <i>Parks & Places Specialist</i> Elvira Kolmychenko <i>Work Programme Lead</i> | Members were updated on CF projects and activities in the month of May and progress of various programmes. Projects all tracking according to plan and budgets. Minor damage from recent storm being repaired. Members to give feedback on Kiwi in Whakanewha signage. |

Governance Role

1. Accountability to the public
2. Engagement
3. Input to regional decision-making
4. Keeping informed
5. Local initiative / preparing for specific decisions
6. Oversight and monitoring
7. Setting direction / priorities / budget

Role of Workshop:

- (a) Workshops do not have decision-making authority.
- (b) Workshops are used to canvass issues, prepare local board members for upcoming decisions and to enable discussion between elected members and staff.
- (c) Workshops are not open to the public as decisions will be made at a formal, public local board business meeting.
- (d) Members are respectfully reminded of their Code of Conduct obligations with respect to conflicts of interest and confidentiality.
- (e) Workshops for groups of local boards can be held giving local boards the chance to work together on common interests or topics

Waste Solutions

Tawaipareira Reserve – Proposed Resource Recovery Park extension – discussion

5 June 2024

Bret Dragt & Greg James

Waiheke Island Community Resource Recovery Park 108-110 Ostend Road

- New contract for CRRP operations awarded in 2020
 - Originally to AIMS (now called Programmed) partnering with Island Waste Collective and Clean Island.
- Goals to reduce waste material hauled off the island, divert as much material as possible away from landfill, and find opportunities for the diverted material.
- FTEs employed – 29.6 through these contracts.
- Material composition (FY23) – 7,800T through the site (excl kerbside collections).

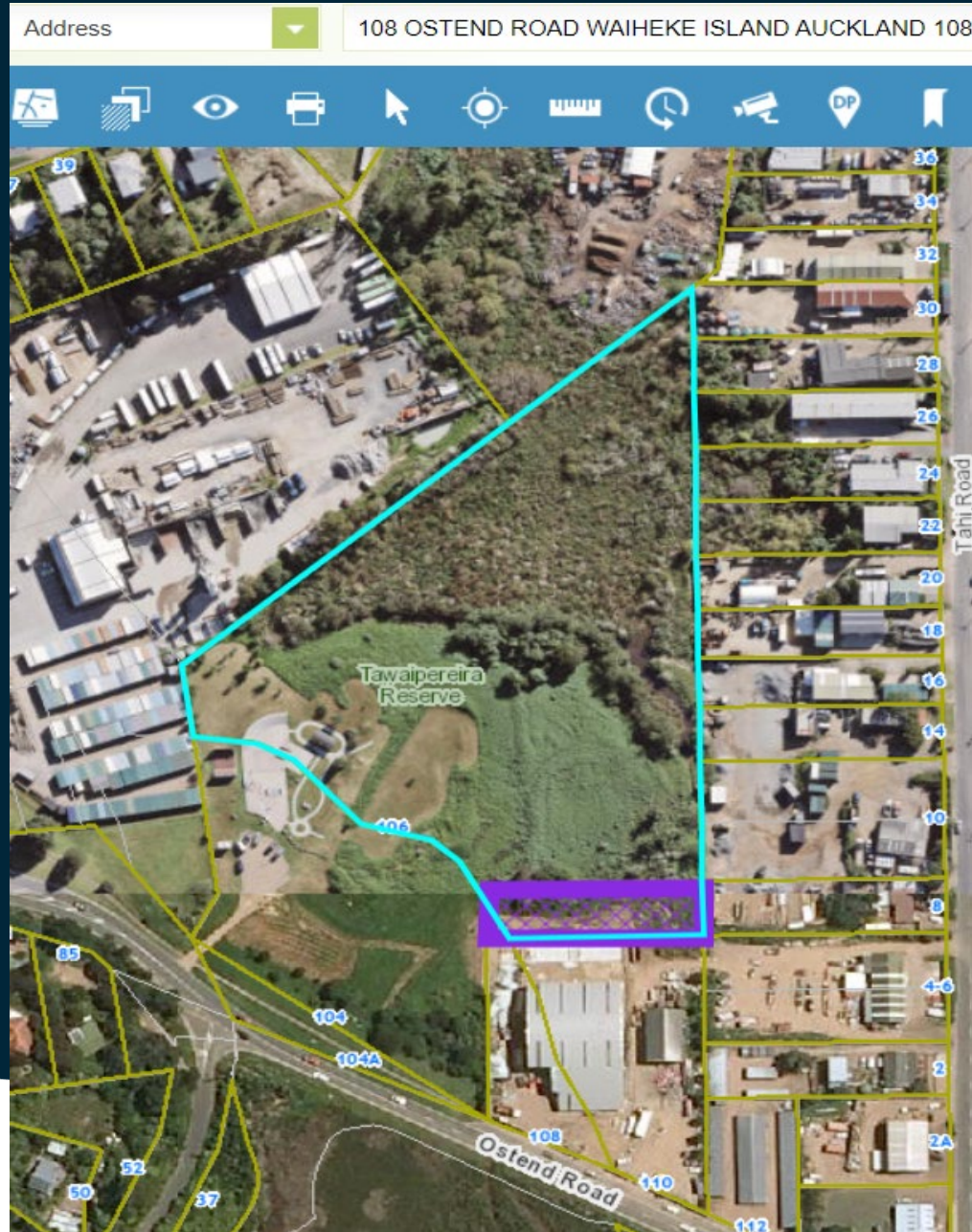
The Challenge

As we look to:

- Reduce material going off island
- Divert waste from landfill
- Provide employment opportunities
- Offer a wider variety of services

The site gets busier and with this, comes some constraints. Further, some inefficiencies start to occur due to lack of space.

An Opportunity

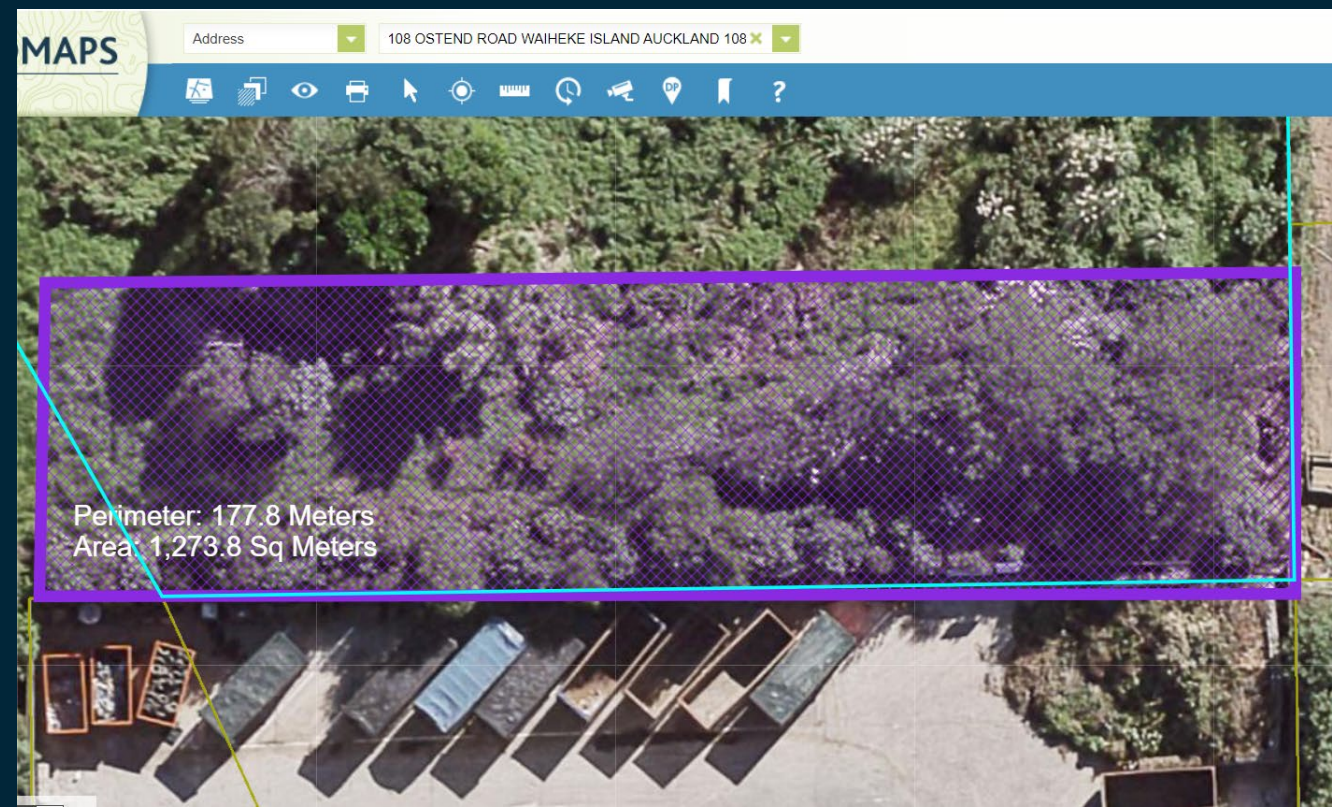
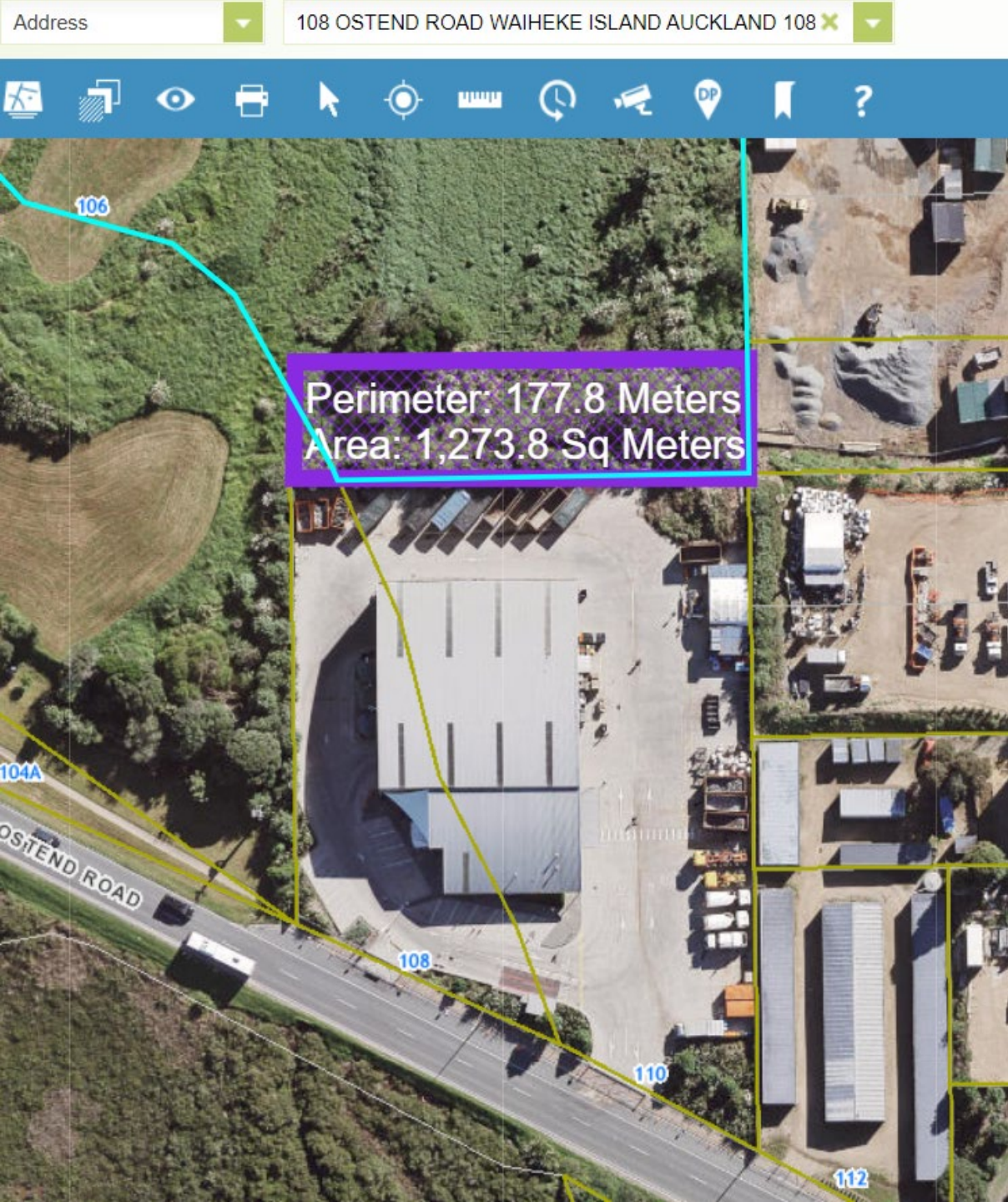


Waiheke Island Local Board workshop

An Opportunity

Tawaipareira Reserve – Proposed Transfer station extension

- Parcel of neighbouring land - approx. 1274sqm being investigated
- Has 'reserve' status but to our knowledge is generally unused for any particular recreational purposes
- If CRRP is expanded into his space, it will likely be gravelled and fenced
- Intended to allow for expansion of footprint for operations







Waiheke Island Local Board workshop

Potential benefits

- Improved operational efficiencies at the site
- Range of services (e.g.: opens up additional space and potential activities for the site for diversion activities or other operational activities)
- Less congestion
- Improved customer experience
- Alignment with aspects of Waiheke Local Board Plan (e.g.: Supporting a move toward a zero-waste future; improving diversion of waste away from landfill).

Status on the land

- Parks and Community Facilities is responsible for the maintenance of the reserve land. The parcel is subject to the provisions of the Reserve Act 1977.
- This means the primary purpose of the reserve land is for recreation or activities that are ancillary to recreation.
- Use for a Resource Recovery Park could require a reclassification (a change in the reserve status to another under the Reserves Act 1977) or revocation (stripping away its reserve status).
- Both options go through a process of workshops, political reporting; public notification, public hearings if triggered by the submission process, mana whenua engagement etc.
- The parcel is held by the Crown through DOC and it has classified the reserve for recreation purposes and appointed Auckland Council and Ngāti Pāoa to jointly manage and control the land.

P&CF Review / Feedback

- Our colleagues in P&CF have declined support for the extension as the reserve (as a whole) serves as a suburb play space.
- Reserve classification does not support or allow the proposed use for a Resource Recovery Park.
- Final approver would be the Minister of Conservation (under delegation).

Request to the Local Board

- Initial feedback / discussion
- Questions / answers



WAIHEKE

Local Board Report – April 2024

**MAKING
GREAT PLACES
AUCKLANDERS LOVE**
PARKS & COMMUNITY FACILITIES



PREPARED BY SHANE HOGG – AREA OPERATIONS MANAGER

Parks & Community Facilities | Customer and Community Services Directorate

Proudly supported by



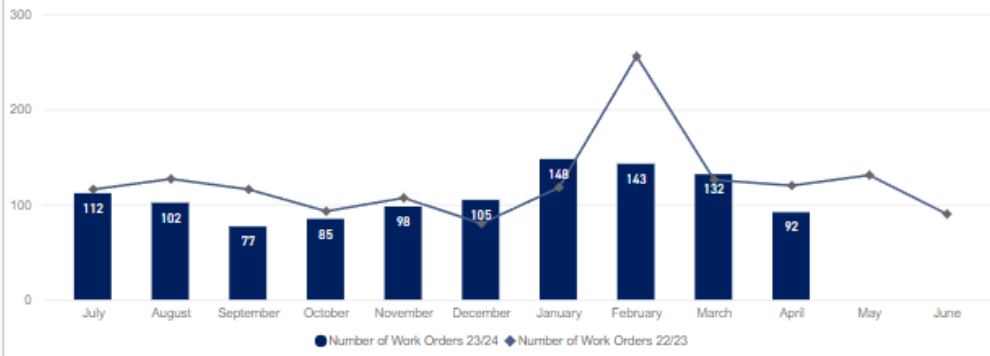
PERFORMANCE REPORTING

Audit Results and Request for Service

Request for Service Received

Total raised for FY23/24 YTD **1094**

Waiheke RFS Breakdown



*Only includes RFS that have resulted in a Work Order for action.

Breakdown of Top 5 Request for Service for April

| Service Name | #Received |
|-----------------------------------|-----------|
| Carpentry Maintenance Service | 2 |
| Electrical Maintenance Service | 3 |
| Plumbing Maintenance Service | 14 |
| Structure Maintenance and Repairs | 3 |
| Tree Maintenance - General | 35 |

Breakdown of Top 5 Request for Service FY23/24 YTD

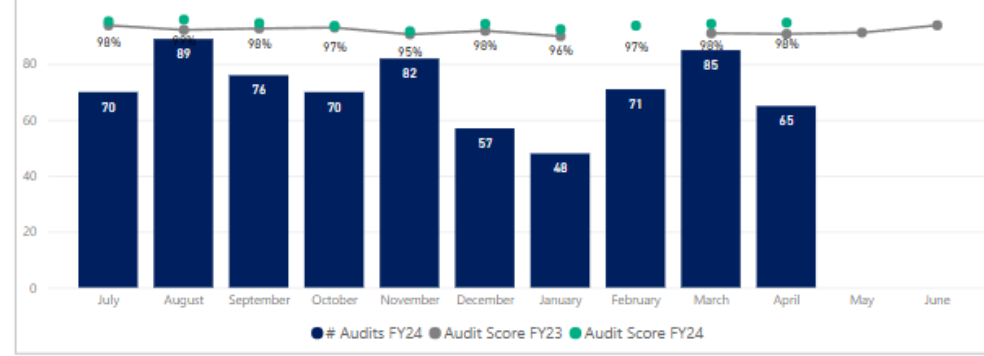
| Service Name | #Received |
|-----------------------------------|-----------|
| Carpentry Maintenance Service | 108 |
| Electrical Maintenance Service | 104 |
| Plumbing Maintenance Service | 171 |
| Structure Maintenance and Repairs | 54 |
| Tree Maintenance - General | 252 |

COMMENTARY

No notable changes since last month, however we are continuing to look for loose litter requests from bin removals to highlight any hotspots or areas that have increase in litter, currently no requests were raised for loose litter in April.

Audit Results

Waiheke Full Facilities Audits



The highlights and lowlights of audits undertaken FY23/24 YTD are:

Highlights YTD

- Turf
- Sportsfields
- Response WO
- Litter
- Furniture, Playgrounds & Recreational Equipment

Lowlights YTD

- Street Garden

COMMENTARY

No notable change since the previous month with the exception of street gardens needing some attention, we will discuss this with our contractor and look for areas of improvement.



MAINTENANCE DELIVERY UPDATE

Palm Beach Reserve

We re-stickered remaining vessels. It's been quite a success. Originally, there were approximately 50 vessels, but now only about 20 left.





MAINTENANCE DELIVERY UPDATE

Little Oneroa

We have grinded out a trip hazard along the pathway as preventative health and safety measures.

Before



After





MAINTENANCE DELIVERY UPDATE

Little Oneroa

We removed a houseboat in collaboration with staff from Harbor Masters/Auckland Transport and Council's Compliance team.



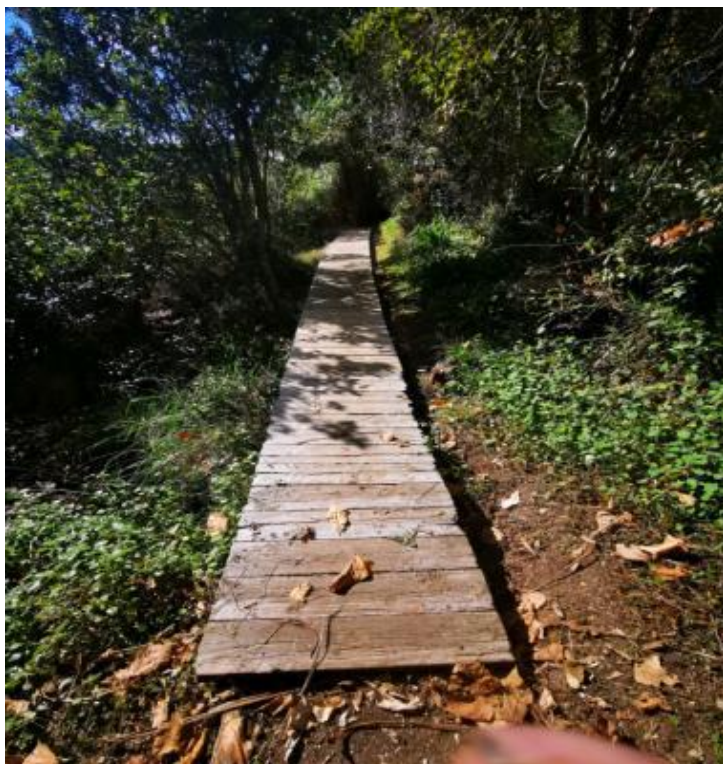


MAINTENANCE DELIVERY UPDATE

Putiki Reserve

We have installed a non-slip mat on the boardwalk from the causeway as part of preventative Health and Safety measures.

Before



After





MAINTENANCE DELIVERY UPDATE

Little Oneroa Reserve

We have fixed the bench seat tops, repaired cracks, and replaced damaged parts.

Before



After





Church Bay Norske Toilet

The pavement underneath our toilet was being undermined. Our contractor has filled the void with metal and compacted it in to fix the issue.

Before



After





MAINTENANCE DELIVERY UPDATE

Catherine Mitchell Cultural Society

We have upgraded their signage and website. We removed the old signs and installed the new ones.

Before



Continue on the next slide....

MAINTENANCE DELIVERY UPDATE

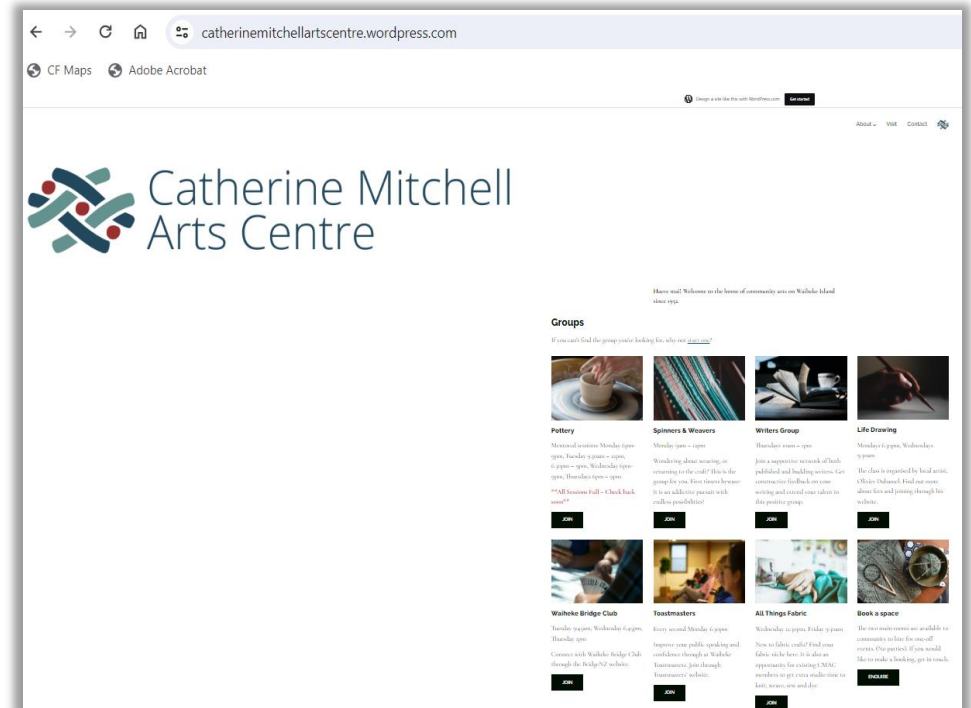
Catherine Mitchell Cultural Society

When you scan the QR code it takes you to their new website which provides all the information on how to join the various groups operating from the centre.

After



Online site





MAINTENANCE DELIVERY UPDATE

Putiki Reserve

We have replaced the tabletop on the picnic seats at Putiki Reserve.





MAINTENANCE DELIVERY UPDATE

Oneroa Village toilets

We have replaced the gutters at the toilet in Oneroa Village





MAINTENANCE DELIVERY UPDATE

Matapana Reserve

We have replaced the bench seat that was damaged at Matapana Reserve





MAINTENANCE DELIVERY UPDATE

Delamore to Matiatia

We have repainted and tidied up the tramping track sign at Delamore to Matiatia

Before



After



MAINTENANCE DELIVERY UPDATE

Onetangi Beach



Waiheke - Onetangi Beach featured on an "Explore New Zealand" Facebook page.



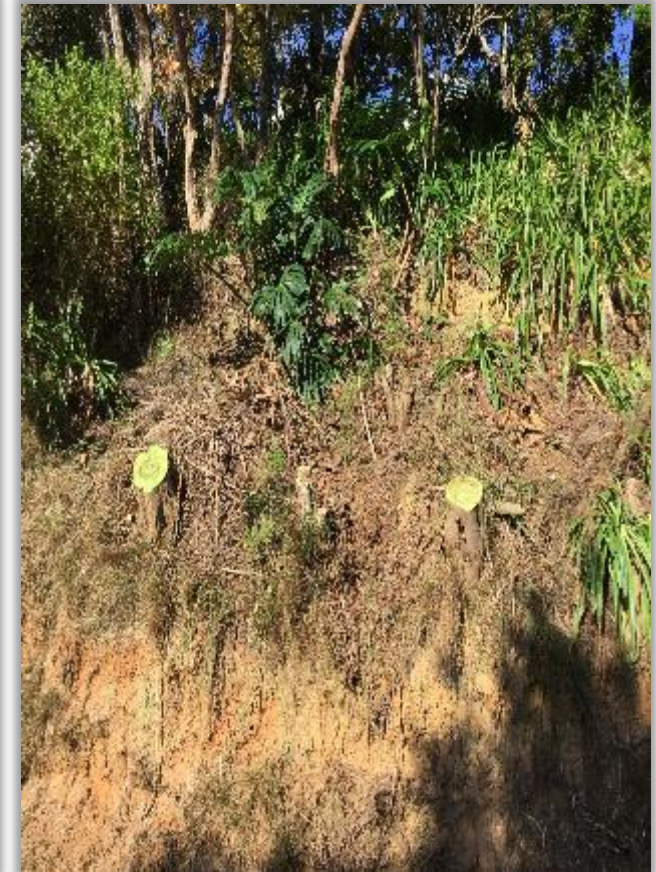
MAINTENANCE DELIVERY UPDATE

Anzac Reserve

Programmed had the preparations for Anzac Day under control with fancy painting, water blasting, and gardening activities all taking place before April 25th.



Arboriculture maintenance



Treescape undertook work along Hill Road, the work was to remove pest species *Acacia* sp. (Wattles) trees that were encroaching over the road and causing visibility issues, rather than prune and have an ongoing issue as they grow back due to them being unwanted pest species they were removed, and the stumps cut low and pasted with poison to prevent regrowth. A safety concern for road users has been addressed and the removal of unwanted pest species at the same time.



Arboriculture maintenance – Request for Service

Treescape have been working through various requests for service from the public. See below they undertook pruning on a *Pseudopanax* sp. that was growing low and had low-hanging limbs in Oneora carpark. Vehicles can safely access the car park spaces now.



Treescape have been working through various requests for service from the public. See above where they attended to a fallen tree on Wilma Road near the bus stop, they removed the fallen tree and the debris taken away, alleviating the safety issues for bus users.



ARBORICULTURE UPDATE

Arboriculture maintenance – Scheduled Park Pruning – Blackpool Park



Treescape completed the cyclic scheduled park maintenance within Blackpool Park, all the trees are looking well maintained, giving the park an overall aesthetically pleasing feel.

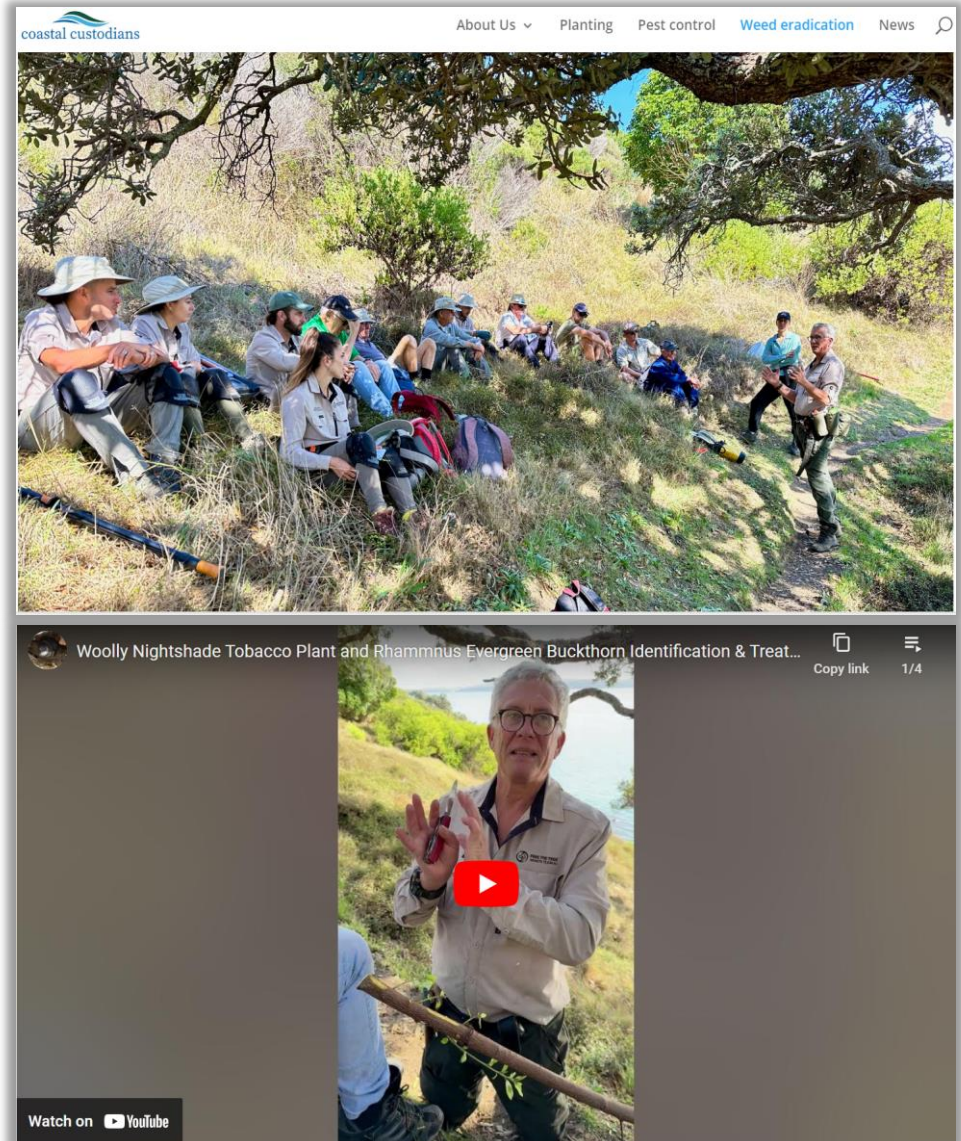


New Ecological Maintenance contract awarded to local Waiheke Island company

Following an open regional tender process, the Waiheke Island ecological maintenance contract for the next two years was awarded to a local Waiheke Island company, “Free The Tree”.

During the contract break between the old contract ending on 29th February and the new one being awarded a couple of months later, Free The Tree have continued NETR-funded initial control to extend the managed area on Rangihoua.

The company has also supported several local community groups, including running workshops and producing educational materials to support volunteers (for example, photos from Coastal Custodians website, right and on <http://coastalcustodians.org/weed-control/>).





NOTIFICATIONS

Community leasing and land-owner approvals

Community Leasing

Community lease movements

- Nothing to report

Land Advisory

Land-owner applications received are assessed by Land Use Advisory and reviewed by Community Facilities staff. The board will be contacted for feedback in due course.

- There were no Landowner approval applications **received** in the Waiheke Local Board area during April 2024.
- There were no landowner approval applications **approved** in the Waiheke Local Board area during April 2024.



WORK PROGRAMME UPDATE

Changes to agreed FY24 Project Delivery Programme

Minor Change

Projects affected by minor change over the previous month:

| ID REF | Activity Name | Change |
|--------|-------------------|--------|
| | Nothing to report | |
| | | |

Substantial Change

Projects affected subject to substantial change:

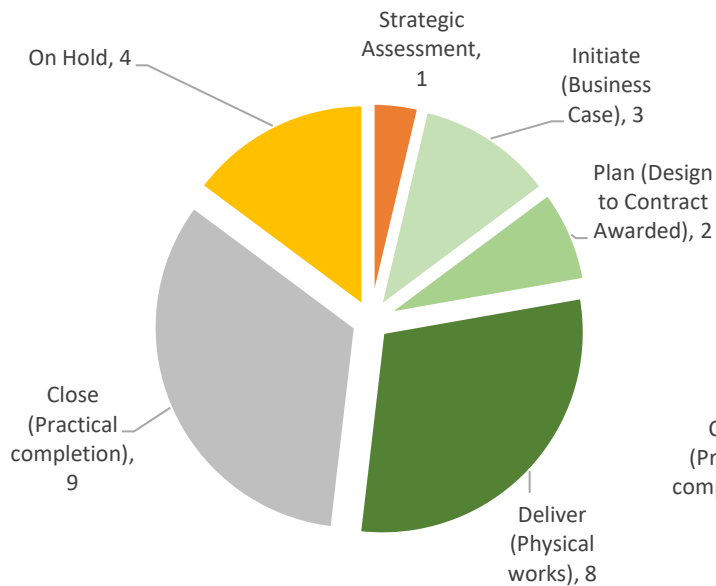
| ID REF | Activity Name | Change |
|--------|-------------------|--------|
| | Nothing to report | |
| | | |

PROJECT DELIVERY STATUS

Project Delivery

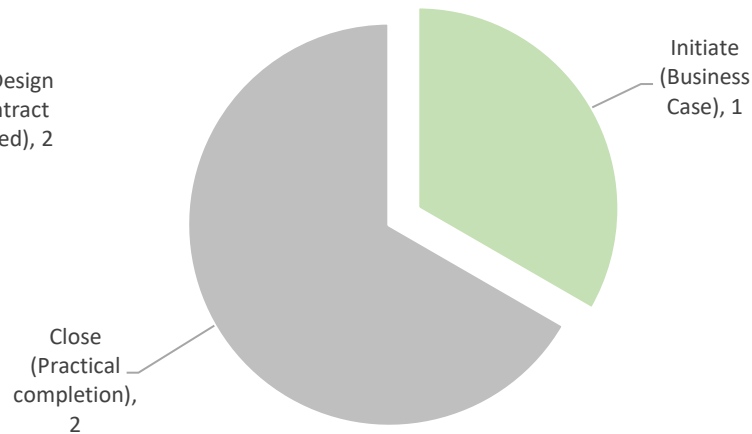
Annual work programme Local Board - Project Status

Total Number of Projects - 27



Annual work programme Local Board - Project Status

Total Number of LDI Projects - 3



Notifications - Next Month

OWNER: Shane Hogg

We have a new temporary Senior Project Manager start in our team. Simon Ashplant has taken over Josephs Milan's old projects until we find a permanent replacement for Jospeh's old role.

TIMELINE: 6th May 2024



PROJECT DELIVERY STATUS

| | | | Initiate | Preliminary design | Detailed Design | Tender Process | Construction | Defects | |
|---|------------------|---|-----------------------------|---|-----------------|----------------|--------------|---------|--|
| | | | 2023/2024 - Current year | | | | | | |
| Activity Name | RAG | Local Board Commentary | Timeline | Q1 | Q2 | Q3 | Q4 | | |
| Albert Crescent to Wharf Road - renew walkway and retaining wall | Green - On Track | Project complete November 2022. | Baseline Forecast/Actual | [Gantt chart showing completion in Q4 2022] | | | | | |
| Artworks and Community Centre - Comprehensive Renewal | Green - On Track | Current status: Professional services procurement is nearly complete. Next steps: Start building consent documentation. | Baseline Forecast/Actual | [Gantt chart showing completion in Q4 2023] | | | | | |
| Carpark and Roding - Renewals - Waiheke | Green - On Track | Current status: Scope of the project has been reduced. Physical works contract awarded. Next steps: Start physical works at Lower Accessway to Onetangi Sportspark. | Baseline Forecast/Actual | [Gantt chart showing completion in Q4 2023] | | | | | |
| Catherine Mitchell Cultural Society building - interior and exterior renewals | Green - On Track | Project completed September 2023. | Baseline Forecast/Actual | [Gantt chart showing completion in Q3 2023] | | | | | |
| Citizens Advice Bureau - interior and exterior renewals - Waiheke | Green - On Track | Current status: Building consent has been obtained and the project is currently under tender. Next steps: Works are expected to commence before the end of financial year 2023/2024. | Baseline Forecast/Actual | [Gantt chart showing completion in Q4 2023] | | | | | |
| Golf Clubhouse - interior and exterior renewals - Onetangi Sports Park | Amber - At Risk | Current status: Project to be put on hold. A site visit has taken place involving stakeholders and the engineer to establish the project scope. Next steps: Proceed to assign the engineering work and advance the design phase accordingly. | Baseline Forecast/Actual | [Gantt chart showing completion in Q4 2023] | | | | | |
| Hekerua Bay Reserve - renew path and install retaining wall | Amber - At Risk | Current status: Design works for the retaining wall are completed. Meet with stakeholders and discuss retaining wall alignment and current encroachment of the carpark. Retaining wall footings are being re-designed, access will be required from neighbour's land to install piles for retaining wall. Next steps: Discuss options for footings and get permission from the neighbour to allow access for digger to allow footings to be installed. Building consent documentation has been lodged. Site visit has been arranged with neighbour to discuss options, and encroachment of carparking bay on Council land. | Baseline Forecast/Actual | [Gantt chart showing completion in Q4 2023] | | | | | |
| LDI minor capex fund FY2022/2023 - Waiheke | Green - On Track | Project completed October 2023. | Baseline Forecast/Actual | [Gantt chart showing completion in Q4 2023] | | | | | |
| Little Oneroa Reserve - renew play space, stairs and pathways | Green - On Track | Project completed February 2024. | Baseline Forecast/Actual | [Gantt chart showing completion in Q1 2024] | | | | | |
| Minor Capital works - Waiheke | Green - On Track | Current status: This budget is for the delivery of small works through the Facility Managers and items will be identified over the course of the financial year. Next steps: Delivery of minor capital works items. | Baseline Forecast/Actual | [Gantt chart showing completion in Q4 2023] | | | | | |
| Onetangi Sports Park - general renewals | Green - On Track | Current status: Resource consent was obtained for installing an additional relocatable style changing room with toilets and utility connections. Portacom changing room has been ordered and building consent has been lodged. Next steps: Tender works which are expected to commence before the end of financial year 2023/2024. | Baseline Forecast/Actual | [Gantt chart showing completion in Q4 2023] | | | | | |

PROJECT DELIVERY STATUS

| | | | Initiate | Preliminary design | Detailed Design | Tender Process | Construction | Defects | |
|--|------------------|--|-----------------------------|--------------------|-----------------|----------------|--------------|---------|--|
| | | | 2023/2024 - Current year | | | | | | |
| Activity Name | RAG | Local Board Commentary | Timeline | Q1 | Q2 | Q3 | Q4 | | |
| Open space furniture, fixings, equipment, BBQs and signage - renew - 2023/2024 - Waiheke | Green - On Track | Current status: Scoping is currently underway to determine the scope of works. Next steps: Complete scoping and start physical works. | Baseline Forecast/Actual | [Green] | | | | | |
| Open space furniture, fixings, equipment, BBQs and signage - renew - 2024/2025 - Waiheke | Amber - At Risk | Current status: Investigations and scoping are currently underway. Next steps: Complete scoping, investigations and programme physical works for the financial year 2024/2025 when the budget allows. | Baseline Forecast/Actual | | | | | | |
| Open space lighting - sports and amenity lighting - renew - Waiheke | Green - On Track | Project completed October 2023. | Baseline Forecast/Actual | [Yellow] | [Green] | | | | |
| Open space toilets - develop and renew stage two - Waiheke | Green - On Track | Current status: The physical works at Oneroa Village toilet have been completed. Investigation is underway at Omiha Beach toilet which has been closed due to recent slips. Next steps: Continue with investigation and design for Omiha Beach toilet and provide an update to stakeholders by the end of the financial year 2023/2024. | Baseline Forecast/Actual | [Grey] | | | | | |
| Parks LDI quick response fund - Waiheke | Green - On Track | Project completed October 2023. | Baseline Forecast/Actual | [Green] | | | | | |
| Rakino Hall relocation - Rakino Island | Green - On Track | Current status: Site investigations and initial planning assessment are partially completed. The concept options are underway with feedback from the local community and other stakeholders. Next steps: Confirm a concept option with stakeholders and lodge resource consent. | Baseline Forecast/Actual | [Blue] | | [Orange] | | | |
| Tawaipareira Reserve stage two - replacement of play space, bike track, new flying fox | Green - On Track | Project completed March 2024. Planting are expected to commence before the end of the financial year 2023/2024. | Baseline Forecast/Actual | [Yellow] | [Green] | | | | |
| Te Whau Esplanade Reserve - stabilise Hitapa track | Amber - At Risk | Current status: This project is on hold. A walkover of the site with internal geotechnical specialists in October 2019 confirmed there are limited works required relating to slip repairs. This track renewal will be bundled with the track renewal programme, enabling a renewal of the walking track in its entirety. The project remains on hold until the landslips have been repaired. Resource consent has been extended to allow physical works to be completed in future years. Next steps: An existing design for the upgrade is being reviewed and cost. Once the slips have been remediated, work can be planned with the Waiheke Local Board. | Baseline Forecast/Actual | | | | | | |



PROJECT DELIVERY STATUS

| | | | Initiate | Preliminary design | Detailed Design | Tender Process | Construction | Defects |
|---|------------------|--|--------------------------|--------------------|-----------------|----------------|--------------|---------|
| | | | 2023/2024 - Current year | | | | | |
| Activity Name | RAG | Local Board Commentary | Timeline | Q1 | Q2 | Q3 | Q4 | |
| Tracks and pathways - renew - 2021/2022+ - Waiheke | Green - On Track | <p>Current status:</p> <p>Priority 4: Matiatia Owhanake (Matiatia Wharf to Owhanake Bay)- Track completed.</p> <p>Priority 5: Te Aroha Walkway - Boardwalk footings have been installed, working with the friends of Te Aroha on options. Works are 80% complete.</p> <p>Priority 6: Glenbrook Reserve (Okoka Road through Glenbrook Reserve to Glenbrook Road - Physical works tender is underway. Site has been set up.</p> <p>Priority 11: Matiatia to Owhanake sidetrack (The entrance is opposite the car rental at Matiatia and traverses past the car garaging business to Delamore Drive)- Track completed.</p> <p>Priority 13: Trig Hill to Awaawaroa Bay- Resource consent granted. Physical works tender is currently being procured with the successful supplier. Reprioritising projects with the local board.</p> <p>Priority 14: Te Wharau Bay - Adjacent to the toilet - Resource consent lodged awaiting decision. Reprioritising projects with the local board.</p> <p>Priority 15: Te Wharau Bay - Southern Bay access - Resource consent lodged awaiting decision. Reprioritising projects with the local board.</p> <p>Priority 17: Park Point (From Church Bay Farm along the coast to Te Wharau Bay - Resource consent lodged awaiting a decision. Reprioritising projects with the local board.</p> <p>Next steps:</p> <p>Priority 2: Matiatia Owhanake (Matiatia Wharf to Owhanake Bay)- Completed.</p> <p>Priority 5: Te Aroha Walkway-finish physical works.</p> <p>Priority 6: Glenbrook Reserve (Okoka Road through Glenbrook Reserve to Glenbrook Road - next to Petra's House.)- Reprioritising projects with the local board.</p> <p>Priority 11: Matiatia to Owhanake sidetrack (The entrance is opposite the car rental at Matiatia and traverses past the car garaging business to Delamore Drive)- Completed</p> <p>Priority 13: Trig Hill to Awaawaroa Bay-Reprioritising projects with the local board.</p> <p>Priority 14: Te Wharau Bay- Adjacent to toilet. Reprioritising projects with the local board.</p> <p>Priority 15: Te Wharau Bay- Southern Bay access. Reprioritising projects with the local board.</p> <p>Priority 17: Park Point (From Church Bay Farm along the coast to Te Wharau Bay). Reprioritising projects with the local board.</p> | Baseline | | | | | |
| Tracks and pathways - renew - 2022/2023 - Waiheke | Amber - At Risk | <p>Current status: Project is on hold.</p> <p>Next steps: Proceed once scope is confirmed.</p> | Baseline | | | | | |
| Waiheke - remediate 2023 storm and cyclone damaged assets | Green - On Track | <p>Current status: Arrangements are being made for a site visit involving stakeholders to initiate the scoping process. The list provided by the stakeholders is currently being reviewed and prioritised internally.</p> <p>Next steps: Coordinate a site visit with the engineer before the end of financial year 2023/2024.</p> | Baseline | | | | | |



PROJECT DELIVERY STATUS

| | | | Initiate | Preliminary design | Detailed Design | Tender Process | Construction | Defects |
|---|------------------|---|--------------------------|--------------------|-----------------|----------------|--------------|---------|
| | | | 2023/2024 - Current year | | | | | |
| Activity Name | RAG | Local Board Commentary | Timeline | Q1 | Q2 | Q3 | Q4 | |
| Waiheke - Urban Forest (Ngahere) Strategy - Growing Phase | Green - On Track | Current status: The urban forest specialist to present the planting locations to the Waiheke Local Board in April 2024. Next steps: Confirming locations and species with the local board, followed by completing procurement and planting before the end of financial year 2023/2024. | Baseline | [Green] | | [Blue] | | |
| | | | Forecast/Actual | | | | | |
| Waiheke Community Art gallery - replacement art gallery floor | Green - On Track | Project completed September 2023. | Baseline | [Yellow] | [Grey] | [Grey] | [Grey] | |
| | | | Forecast/Actual | | | | | |
| Waiheke Library - refurbish building | Green - On Track | Current status: Timber staining complete Next steps: Install new roof membrane. | Baseline | | | [Green] | [Yellow] | [Green] |
| | | | Forecast/Actual | | | | | |
| Walkways and paths - Renewal - Waiheke | Green - On Track | Current status: Scoping is currently underway for this project. Next steps: Finalise scope of works and start the procurement process. | Baseline | | [Green] | [Orange] | [Orange] | |
| | | | Forecast/Actual | | | | | |