

Waiheke Local Board Workshop Agenda

Date of Workshop: Wednesday 7 August 2024

Time: 10:30

Location: Waiheke Local Board, 10 Belgium Street; MS Teams

Time	Workshop Item	Governance role	Purpose	Presenter(s)	Proposed Outcome(s)
10:30	Item 1 Play Plan workshop and FY25 project allocation. Attachment Presentation – Play Plan	Local initiative / preparing for specific decisions	Provide direction on preferred approach	Jacquelyn Collins <i>Play Portfolio Lead</i> Matthew Johnson <i>Sport Auckland</i>	Members will be updated on Play advocacy and progress to date, and presented with the Play Plan for FY25
11:30	Item 2 Time of Use Charging discussion Attachment Presentation ??	Input to regional decision-making	Provide direction on preferred approach	Ben Stallworthy <i>Elected Member Relationship Manager, AT</i> Graeme Gunthorp <i>Project Manager, AT</i> Dan Lambert <i>Project Manager, AT</i>	Members will be provided with advice prior to providing formal feedback on 'time of use charging'

12:15	Lunch Break					
12:45	Item 3	Moa Ave urgent stormwater works update Attachment Presentation – Blackpool Stormwater Improvements update	Keeping informed	Review progress with projects.	Maisa Aldeen <i>Senior Healthy Waters Specialist</i> Jesse Peeters <i>Senior Healthy Waters Specialist</i> Kartik Bhat <i>Relationship Adviser</i>	Members will be updated on Blackpool stormwater improvements
14:00	Item	Community Facilities and Parks update Attachment Presentation – Parks & CF monthly report June 24	Keeping informed	Review progress with projects	Shane Hogg <i>Manager Area Operations</i> Bridget Velvin <i>Facilities Manager</i> Sue Gluskie <i>Facilities Coordinator</i> Jacqui Thompson-Fell <i>Parks & Places Specialist</i> Elvira Kolmychenko <i>Work Programme Lead</i>	Members are updated on CF projects and activities in the months of June and progress of various programmes.

Governance Role

1. Accountability to the public
2. Engagement
3. Input to regional decision-making

4. Keeping informed
5. Local initiative / preparing for specific decisions
6. Oversight and monitoring
7. Setting direction / priorities / budget

Role of Workshop:

- (a) Workshops do not have decision-making authority.
- (b) Workshops are used to canvass issues, prepare local board members for upcoming decisions and to enable discussion between elected members and staff.
- (c) Workshops are not open to the public as decisions will be made at a formal, public local board business meeting.
- (d) Members are respectfully reminded of their Code of Conduct obligations with respect to conflicts of interest and confidentiality.
- (e) Workshops for groups of local boards can be held giving local boards the chance to work together on common interests or topics

Waiheke Local Board Workshop Proceedings

Date of Workshop: Wednesday 7 August 2024
Time: 10:30
Location: Waiheke Local Board, 10 Belgium Street; MS Teams

Cath Handley (Chair)	Kylee Matthews	Bianca Ranson	Robin Tucker	Paul Walden
Present	Present	Present (MS Teams)	Absent	Absent

Time	Workshop Item	Attendees(s)	Summary of discussions
10:30	Play Plan workshop and FY25 project allocation. Attachment Presentation – Play Plan	Jacquelyn Collins <i>Play Portfolio Lead</i> Matthew Johnson <i>Sport Auckland</i>	<p>Members were updated on Play advocacy progress since FY24 including the increase in work programs, funding from local boards, and the innovative nature of projects.</p> <p>The Play Plan was outlined with a completion date of September 2024 anticipated. Funding of 2K is sought for Waiheke projects.</p> <p>Sport Auckland have upcoming Waiheke projects in collaboration with all three island schools.</p>

Time	Workshop Item		Attendees(s)	Summary of discussions
11:30	Item 2	Time of Use Charging discussion Attachment Presentation – Time of Use Charging	Graeme Gunthorp <i>Project Manager, Time of Use Charging, AT</i> Dan Lambert <i>Project Manager, AT</i> Hamish Bunn <i>General Manager, System Strategy & Policy, AT</i> Shiraz Munshi <i>Senior Specialist, Communications & Marketing, AT</i>	<p>Members were provided with advice in advance of providing formal feedback.</p> <p>Time of Use Charging aims at changing behaviour of motorists to reduce congestion. There are three mechanisms – cordons, corridors, and targeting of congestion hotspots. Public understanding and support of the objectives and manifestation of the scheme are crucial.</p> <p>Members agreed that Waiheke’s interest is in entering/exiting downtown - both by commuters from the island, and employees commuting to service jobs on Waiheke. It was also noted that the environmental aspects of the scheme would resonate with the community.</p>

12:15		Lunch Break		
12:45	Item 3 Moa Ave urgent stormwater works update Attachment Presentation – Blackpool Stormwater Improvements update	Maisa Aldeen <i>Senior Healthy Waters Specialist</i> Jesse Peeters <i>Senior Healthy Waters Specialist</i> Kartik Bhat <i>Relationship Adviser</i>	Members were updated on Blackpool stormwater improvements. Project progression is on track, with only one change due to an obstructive tree necessitating one channel crossing a road. Members noted that community buy-in to landscaping and tree planting should be secured prior to finalisation, and that there be interface with the Ngahere planting strategy. It was requested that a local landscaper with ecological expertise be engaged. The Blackpool Residents Association was suggested as the conduit for community consultation on final design and planting plan.	
14:00	Item Community Facilities and Parks update Attachment Presentation – Parks & CF monthly report June 24	Shane Hogg <i>Manager Area Operations</i> Bridget Velvin <i>Facilities Manager</i> Sue Gluskie <i>Facilities Coordinator</i> Jacqui Thompson-Fell <i>Parks & Places Specialist</i> Elvira Kolmychenko <i>Work Programme Lead</i>	Members were updated on CF projects and activities in the months of June and progress of various programmes. Rakino project to be presented soon at a workshop. Community Facilities work programme for last financial year achieved under budget.	

Governance Role

1. Accountability to the public
2. Engagement
3. Input to regional decision-making
4. Keeping informed
5. Local initiative / preparing for specific decisions
6. Oversight and monitoring
7. Setting direction / priorities / budget

Role of Workshop:

- (a) Workshops do not have decision-making authority.
- (b) Workshops are used to canvass issues, prepare local board members for upcoming decisions and to enable discussion between elected members and staff.
- (c) Workshops are not open to the public as decisions will be made at a formal, public local board business meeting.
- (d) Members are respectfully reminded of their Code of Conduct obligations with respect to conflicts of interest and confidentiality.
- (e) Workshops for groups of local boards can be held giving local boards the chance to work together on common interests or topics

Play plan

Waiheke Local Board – 7 August 2024

Jacquelyn Collins – Play Portfolio Lead – Community Wellbeing



Today's workshop

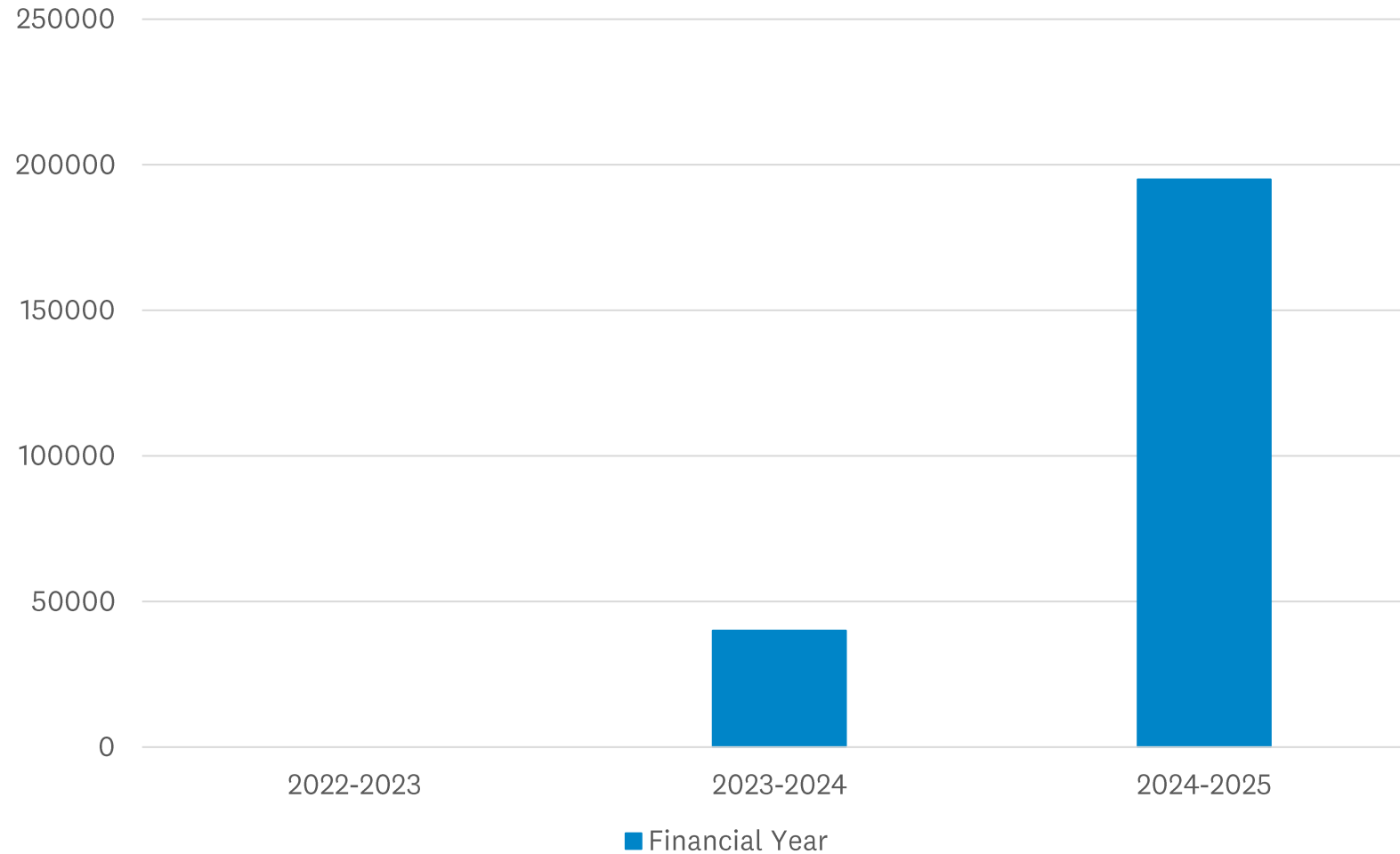
1. Play advocacy – general update
2. Update from Sport Auckland
3. Workshopping the play plan
 - Purpose
 - Contents
 - Elected members' feedback
4. FY25 play advocacy projects
 - Staff recommendation
 - Elected members' feedback



Local board support of play advocacy



Local board investment in play advocacy



FY24 funded play advocacy projects

Project	Local Board	Delivery notes
Tree swings	Devonport-Takapuna	Four swings installed in July 2024; two more swings to be installed
Community House play activation	Devonport-Takapuna	To be delivered in September 2024 at Devonport Community House
Library play investment	Henderson-Massey Rodney	Three libraries equipped with play equipment for on-site use (Rānui Library, Waitākere Central Library, Wellsford Library)
Girls' skate activations	Rodney	Activating two skate parks for local girls – improving the diversity of skate park users, encouraging participation
Fairy forest	Kaipātiki	Partnering with a community group, community-led project to install fairy houses on a local reserve
Adventurous nature space	Upper Harbour	New play provision created on a drainage reserve for local tamariki – installed in Whenuapai in June 2024
Nature Play for Adventurers sessions	Henderson-Massey Upper Harbour	Facilitated sessions with delivery partners, scheduled for July and August 2024
Play event	Rodney	Creative play event for Kumeū and Huapai tamariki, to be delivered by a local community partner in September 2024



Adventurous nature space



Tree swings



Sport Auckland update



Waiheke Local Board



Te Māhere-ā-tākaro o
Waiheke 2024

Play Plan 2024

Celebrating and enabling play
in Waiheke



aucklandcouncil.govt.nz



Why write a Play plan?

- Formalise the play advocacy approach and explain how it complements other play investments by Waiheke Local Board
- Acknowledge and celebrate existing play provision
- Provide a blueprint to enable diverse play opportunities
- Develop and nurture productive stakeholder partnerships
- Build a culture of insight-led decision-making that actively involves tamariki and rangatahi
- Streamline the annual work programme planning process by providing elected members with a menu of projects to consider
- Create a document that can be refreshed with each new Local Board Plan and provide guidance to any new elected members



The Waiheke Play Plan 2024 will...

**Codify play
advocacy**

**Celebrate
existing play**

**Enable
more play**

**Reflect local
board plan**

**Encourage
integration**

**Reflect
insights**



Play plan content

Codify play advocacy approach

- Play advocacy 101
- Legislation
- Sport NZ Play Principles
- Strategic alignment
- Māori outcomes

Celebrate existing play provision

- Playgrounds
- Play in council-owned spaces
- Planned CAPEX play investments

Enable diverse play projects

- Specific play project proposals
- FY25, FY26, FY27



Play plan content

Reflect current local board plan

- All projects linked to Local Board Plan objectives
- Goal: a 'shopping list' of projects that the local board can choose from during work programme planning

Encourage integration

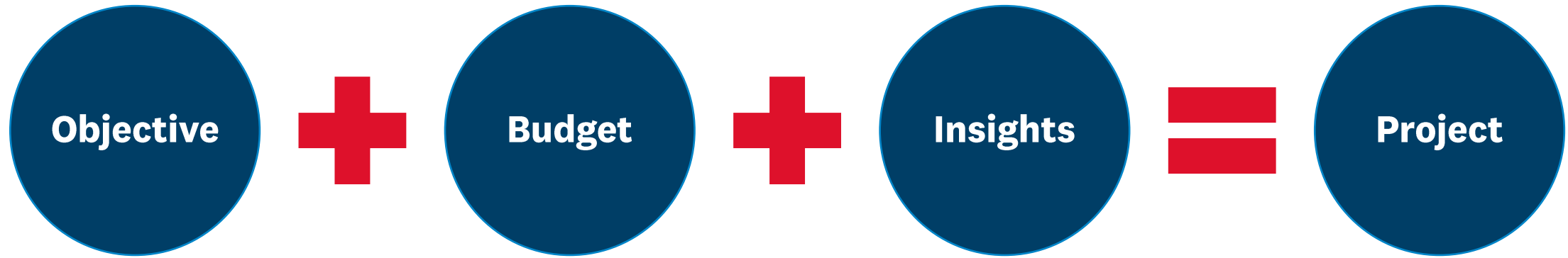
- Play proposals that reflect specialist advice council wide
- Play outcome opportunities other council work programmes
- Partnering with Sport Auckland

Reflect insights

- Engage with iwi
- Engage regularly with council Advisory Panels
- Learn from Sport Auckland work
- Advocate for a new children's panel for the local board



Play advocacy project development



Creating a play project for FY25

Objective

- 2023WHK3.1 – Improve the open space network on the island

Budget

- \$2,000

Insights

- Partner with Sport Auckland to engage local tamariki
- Seek insights from tamariki – develop a play trail?
- Seek guidance from council staff (brokers, etc.)
- Seek elected member feedback



Pātai?





Blackpool Stormwater Improvements Waiheke Island

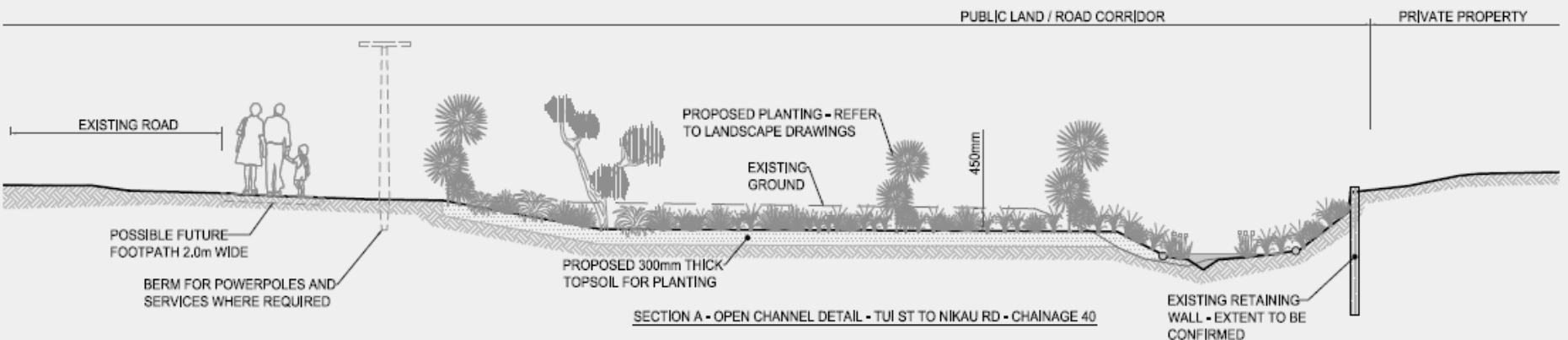
Jesse Peeters | Maisa Aldeen

August 2024



Blackpool Stormwater Improvements – Agenda

1. Tasks completed since last meeting
2. Concept design
3. Stage 1 Design
4. Tree constraints
5. Consultation



Summary of work completed

Completed since last meeting:



Planning assessment completed: Most works require resource consent, some can be completed as permitted.



Watercourse Assessment completed: Watercourses and riverine wetlands exist within the stormwater network.



Hydraulic modelling completed: Confirmed proposed work will reduce flooding.



Geotechnical Investigations and Assessment completed: Confirmed geotechnical conditions and slope stability.



Arborist tree survey completed: Identified critical trees which may be impacted. Some slight design amendments made as a result.



Archaeological Assessment completed: Potential to discover archaeological sites during works – protocols to be implemented and consultation with Ngati Paoa required regarding Urupā site.



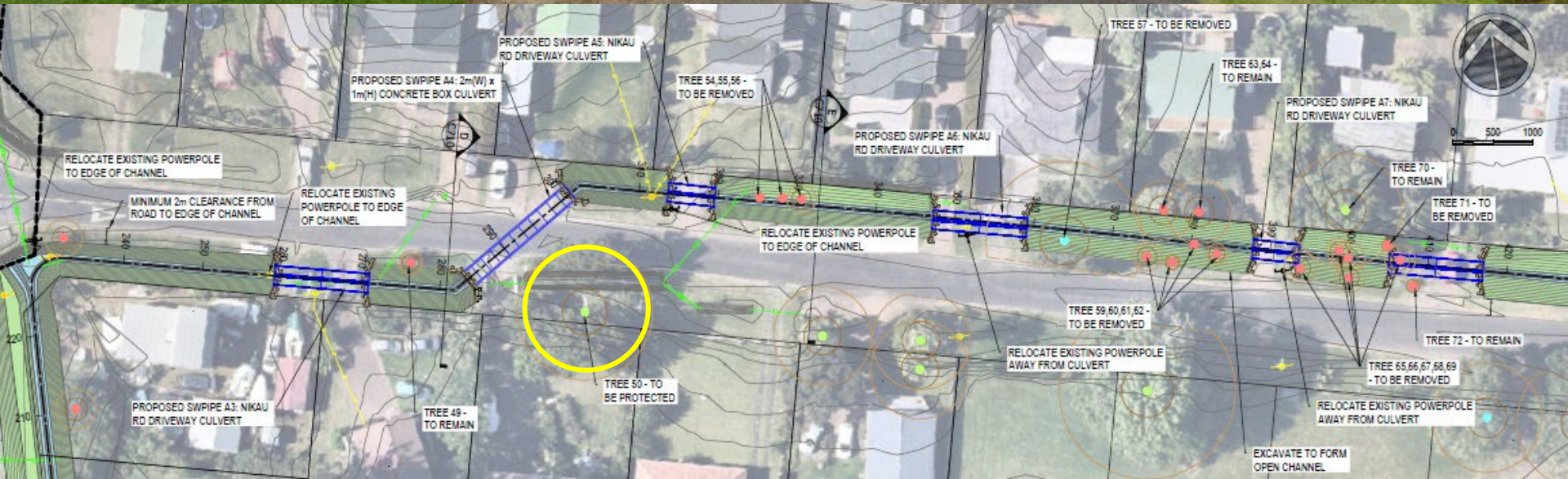
Concept Plan - November 2023



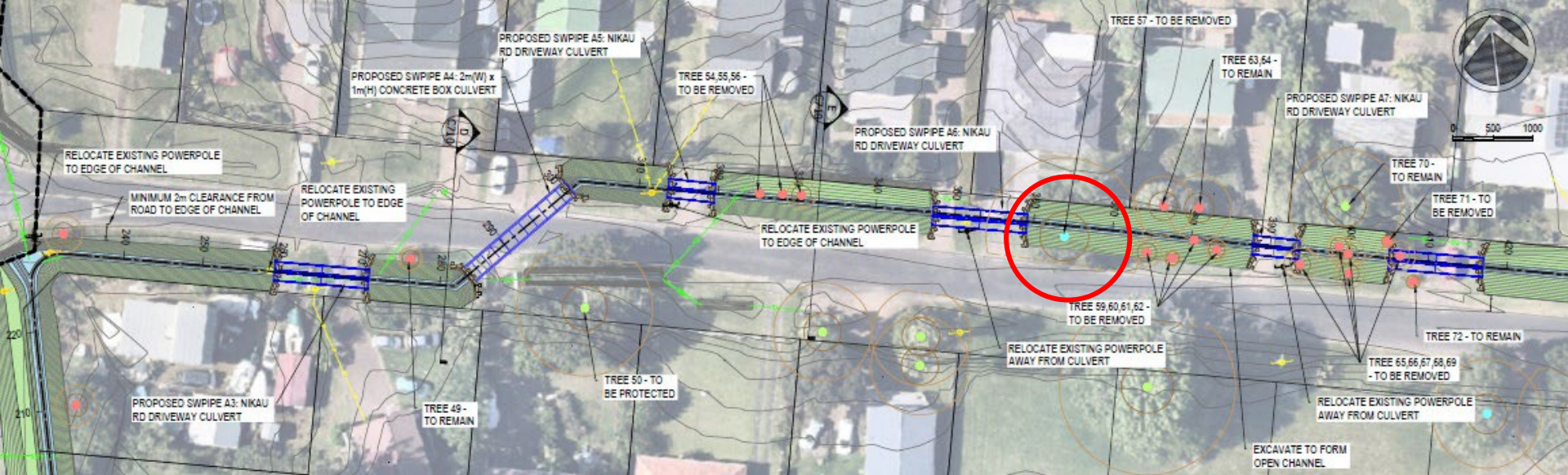
Stage 1 Design - July 2024



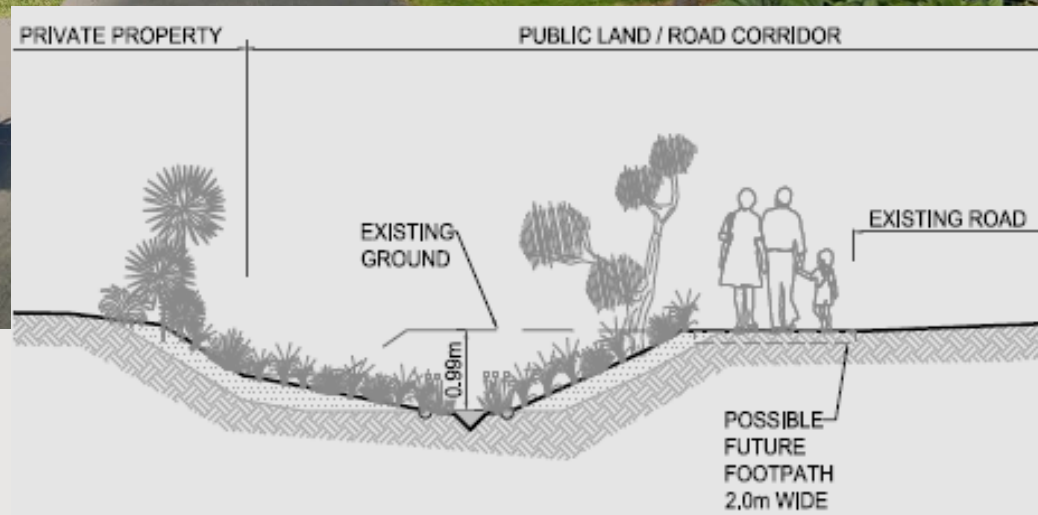
Tree Constraints



Tree Constraints



Visualisation – Nikau Road



SECTION E - OPEN CHANNEL DETAIL - TUI ST TO NIKAU RD - CHAINAGE 340

Community Consultation



Correspondence with community:

- Community workshop held August 2023
- Letters sent November 2023 with concept plan
- Letters sent July 2024 with updated Stage 1 plan



Emails with Ngāti Paoa:

- Feedback provided against option through Blackpool Park. Understanding of required stormwater improvements in Blackpool but no interest to be involved further, other than being kept updated.
- Email sent with July 2024 community update flyer



Meetings and emails with individual landowners:

Multiple community members have been in touch via email and some meetings have been had with individual landowners. Properties in upper catchment generally supportive, however:

30 Tui Street landowners are concerned with project.

- 2 x meetings to discuss proposed work
- Concerns regarding perceived additional flow towards their property and safety risks related to being location at the downstream end of the catchment



Next steps:

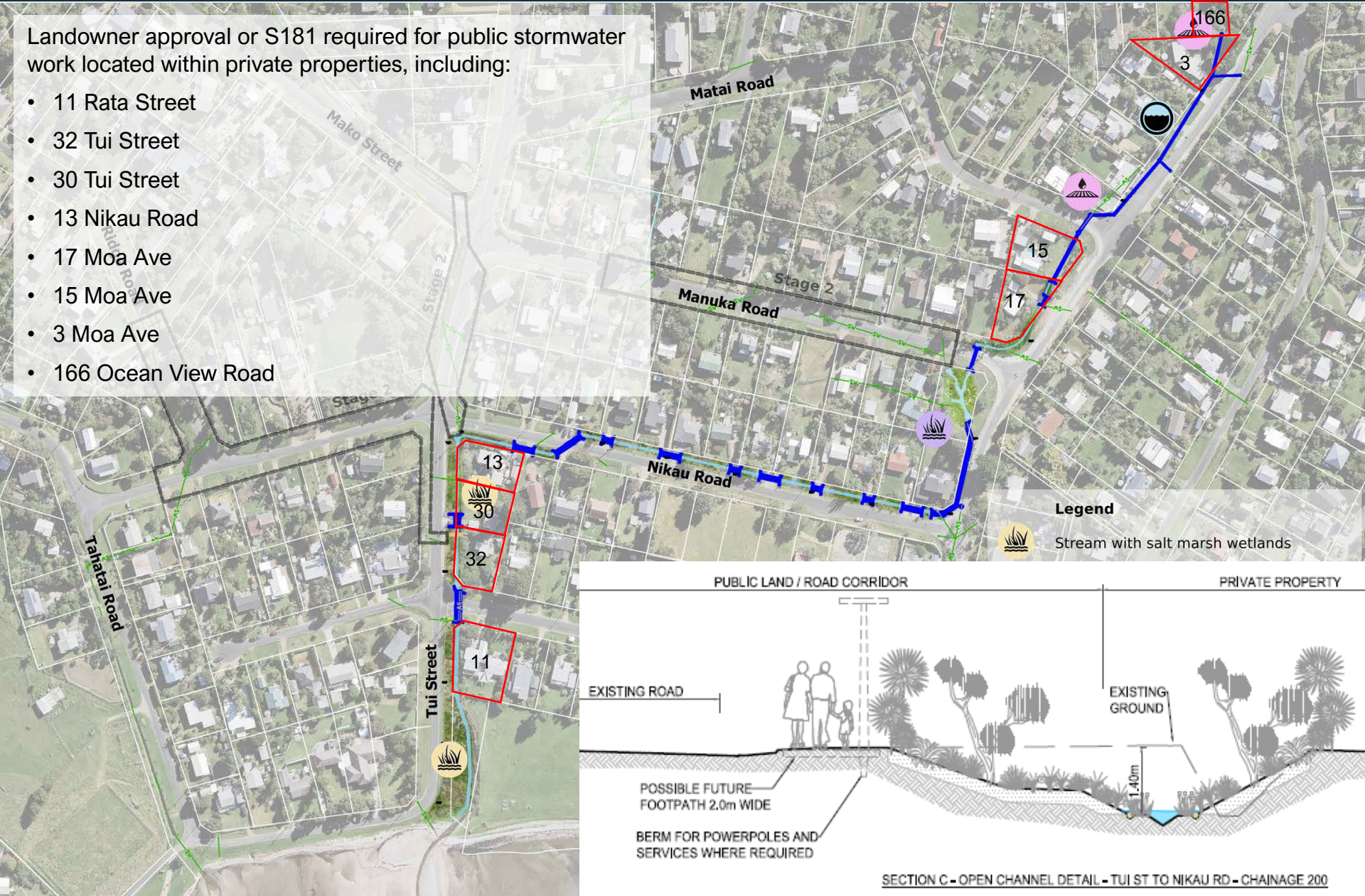
- Gain landowner approval from relevant property owners.
- Lodge Resource Consent



Landowner Approvals | S181

Landowner approval or S181 required for public stormwater work located within private properties, including:

- 11 Rata Street
- 32 Tui Street
- 30 Tui Street
- 13 Nikau Road
- 17 Moa Ave
- 15 Moa Ave
- 3 Moa Ave
- 166 Ocean View Road



Summary and Next Steps

Design works underway:



Quantity Surveyor engaged to provide cost estimate



Ecological Assessment being undertaken



Arborist Report being prepared for resource consent to support tree removals



Assessment of Environmental Effects being prepared for Resource Consent.

Planned dates:



Lodge resource consent by end of September 2024



Start Construction early 2025

Assistance:



Engage local expert to assist with planting plan: does the local board have any contacts?



Investigate options for reusing / disposing of excavated soil on Waiheke Island (to avoid carting material off the island on the ferry). Does the local board have any contacts on the Island who may be able to assist (ie with fill sites)



Pātai? | Questions?





WAIHEKE

Local Board Report – June 2024

**MAKING
GREAT PLACES
AUCKLANDERS LOVE**
PARKS & COMMUNITY FACILITIES

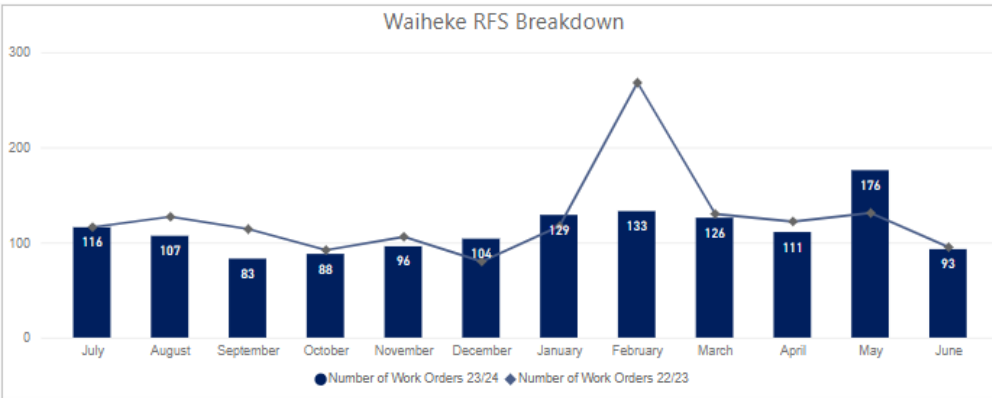


PERFORMANCE REPORTING

Audit Results and Request for Service

Request for Service Received

Total raised for FY23/24 YTD **1362**



*Only includes RFS that have resulted in a Work Order for action.

Breakdown of Top 5 Request for Service for June

Service Name	#Received
Carpentry Maintenance Service	11
Furniture and Fixtures Maint and Repairs	3
Plumbing Maintenance Service	11
Structure Maintenance and Repairs	6
Tree Maintenance - General	36

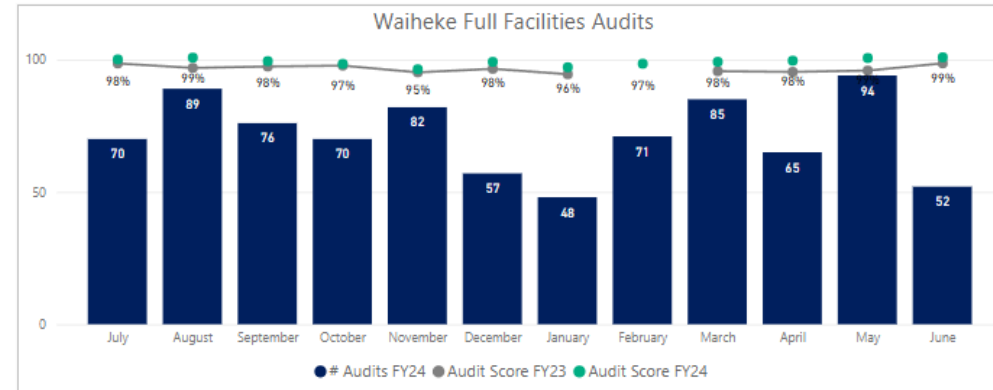
Breakdown of Top 5 Request for Service FY23/24 YTD

Service Name	#Received
Carpentry Maintenance Service	139
Electrical Maintenance Service	145
Plumbing Maintenance Service	202
Structure Maintenance and Repairs	69
Tree Maintenance - General	343

COMMENTARY

Increase in request for service in May were due to getting the last repairs done before end of financial year and maximize operational budgets. For June as most repairs were completed in May there was no significant increase in repairs.

Audit Results



The highlights and lowlights of audits undertaken FY23/24 YTD are:

Highlights YTD
Turf
Sportsfields
Response WO
Litter
Furniture, Playgrounds & Recreational Equipment

Lowlights YTD

COMMENTARY

Audit Scores have remained consistent and compliant, no lowlights noted.



MAINTENANCE DELIVERY UPDATE

Onetangi Sports Park

We have repaired a fence at the Onetangi Sports Park which was vandalised.

Before



After





MAINTENANCE DELIVERY UPDATE

Signage refurbishment

We have been continuing our maintenance of the track signs throughout the island with the latest being at:

Matiatia

Before



After



Continues on the next slide....



Signage refurbishment

Homersham Reserve



Continues on the next slide....



Signage refurbishment

Oneroa Beach Reserve Accessway



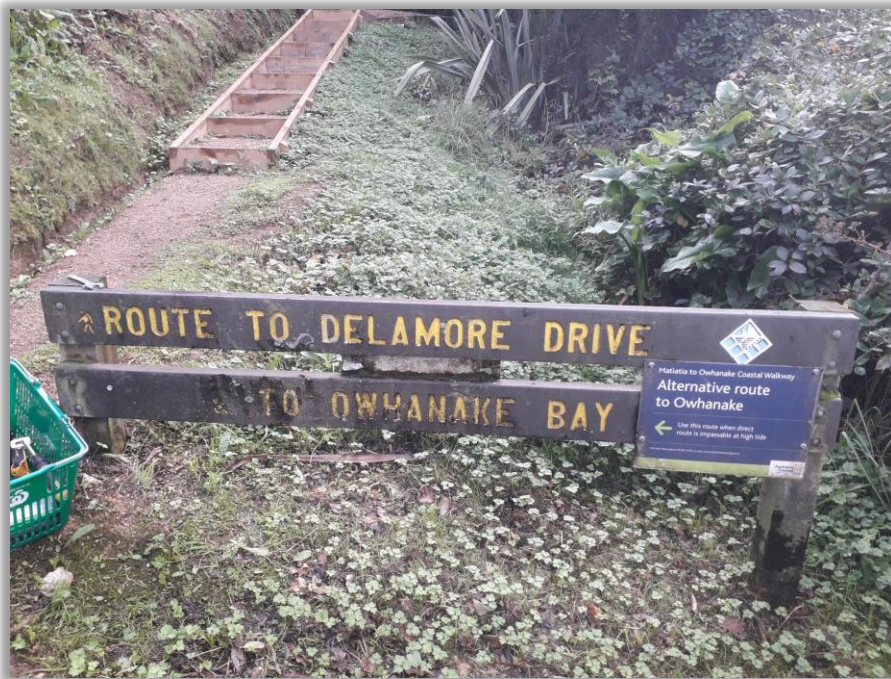
Continues on the next slide....



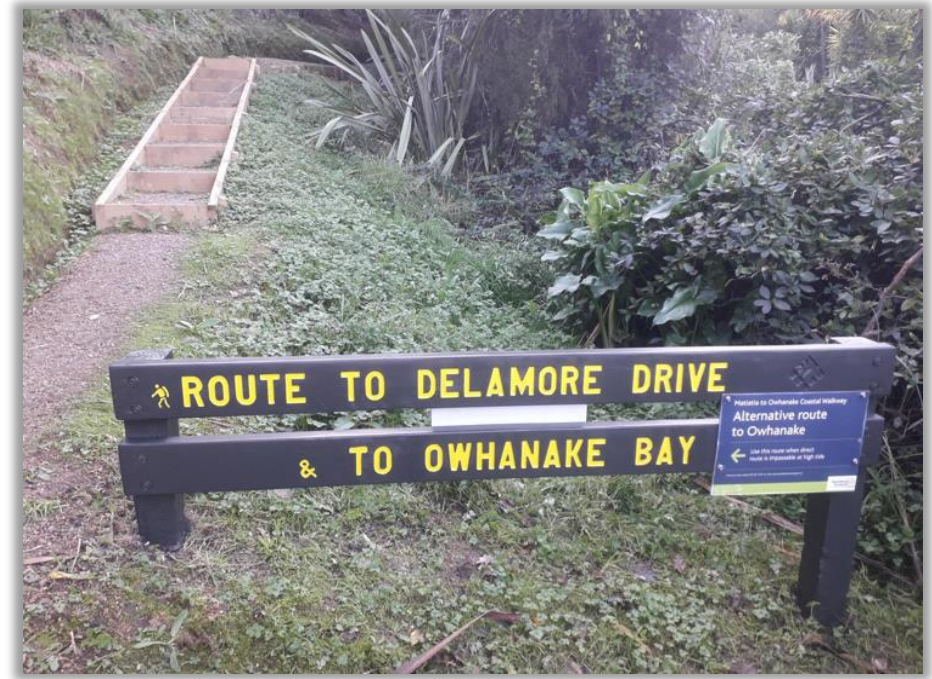
Signage refurbishment

Matiatia Delamore walkway

Before



After



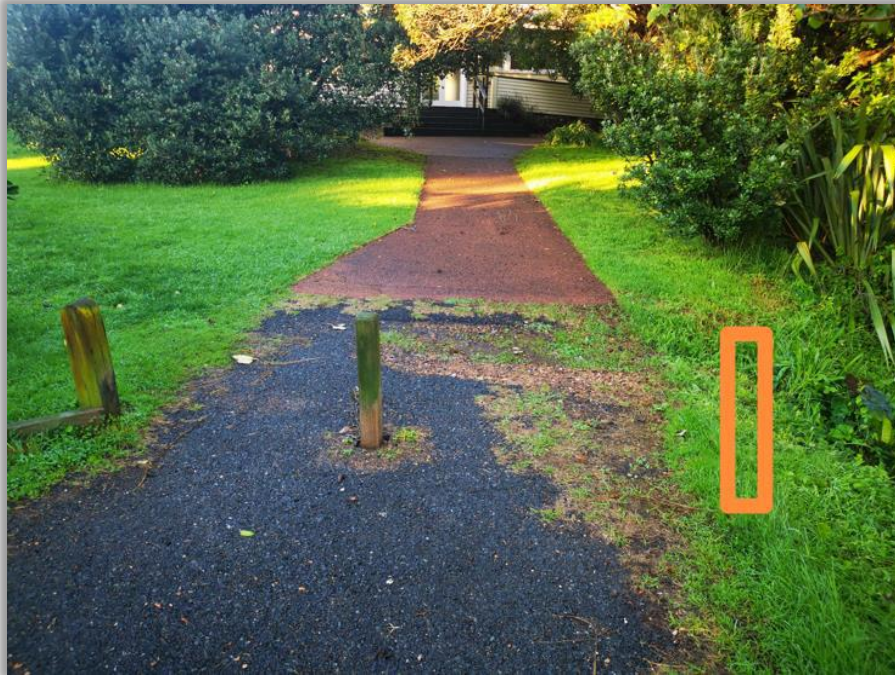


MAINTENANCE DELIVERY UPDATE

Surfdale Hall Reserve

We have installed a missing bollard near Surfdale Hall to ensure no one can drive into the grassed area.

Before



After





MAINTENANCE DELIVERY UPDATE

Ocean View Road

We have installed a new signage for Auckland Transport as we noticed this was missing.

Before



After





MAINTENANCE DELIVERY UPDATE

Anzac Reserve

We have repaired a bollard that was vandalised at Anzac Reserve.

Before



After





MAINTENANCE DELIVERY UPDATE

Te Huruhi Bay Reserve

We have repaired potholes along the Te Huruhi Bay Reserve, 8 cubic metres of gravel used in these repairs to reduce the Health and Safety issues on the access way.

Before



Continues on the next slide....

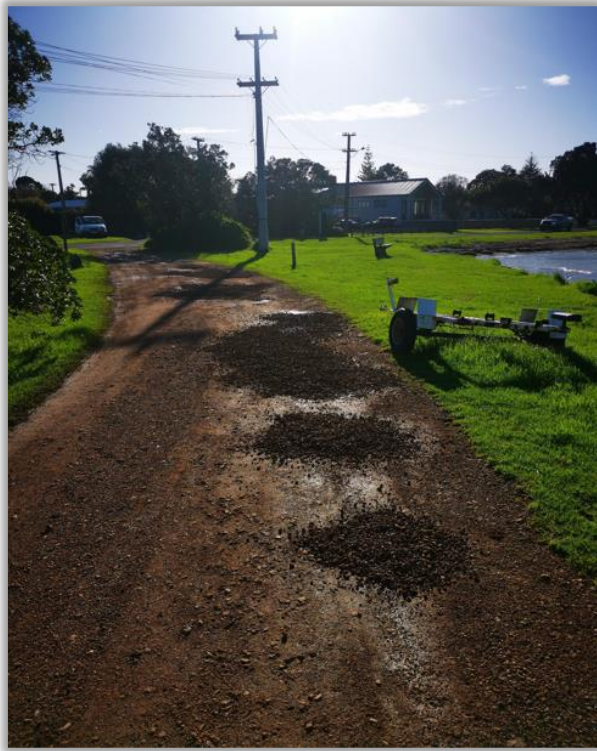


MAINTENANCE DELIVERY UPDATE

MAKING
GREAT PLACES
AUCKLANDERS LOVE
PARKS & COMMUNITY FACILITIES

Te Huruhi Bay Reserve

After





MAINTENANCE DELIVERY UPDATE

Artworks Theatre

We have carpeted the mezzanine area where Otherworld Productions have moved into.

Before



After





MAINTENANCE DELIVERY UPDATE

Catherine Mitchell Cottage Shed

Preventative maintenance for anticorrosion. We also built a platform to keep stored items off the ground.





MAINTENANCE DELIVERY UPDATE

Te Toki Reserve

New dog sign has been put on the main entrance fence.





MAINTENANCE DELIVERY UPDATE

Artworks Theatre

A gutter leak was noticed while cleaning leaf litter from the gutters as part of our scheduled roof cleaning. We have repaired the gutters and fixed the leak.





MAINTENANCE DELIVERY UPDATE

Waiheke Library

While inspecting the Waiheke Library we noticed some paint on the ceilings was starting to peel away, we are working on fixing this.





MAINTENANCE DELIVERY UPDATE

Miami Ave Toilet

Removing all the slotted vents which are made of steel to get them dropped in an acid bath. This will remove the current paint and then we will get them powder-coated and reinstalled.





PROJECT DELIVERY UPDATE

30690 - Onetangi Sports Park – General Renewals

Foundations at the Onetangi Sports Park have been installed in the location requested by the clubs. We are expecting the units to be delivered onsite and installed by the end of August 2024.

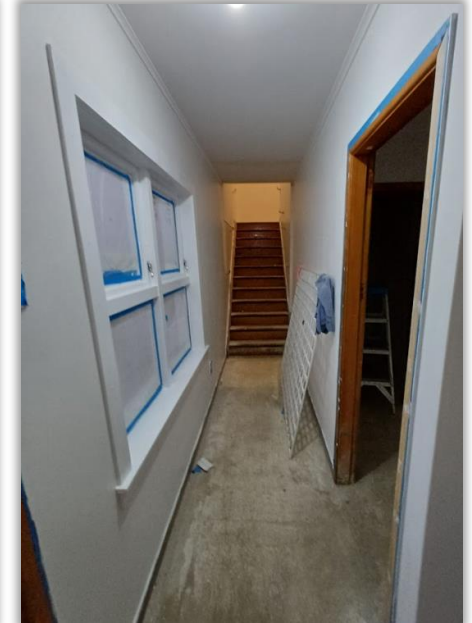




PROJECT DELIVERY UPDATE

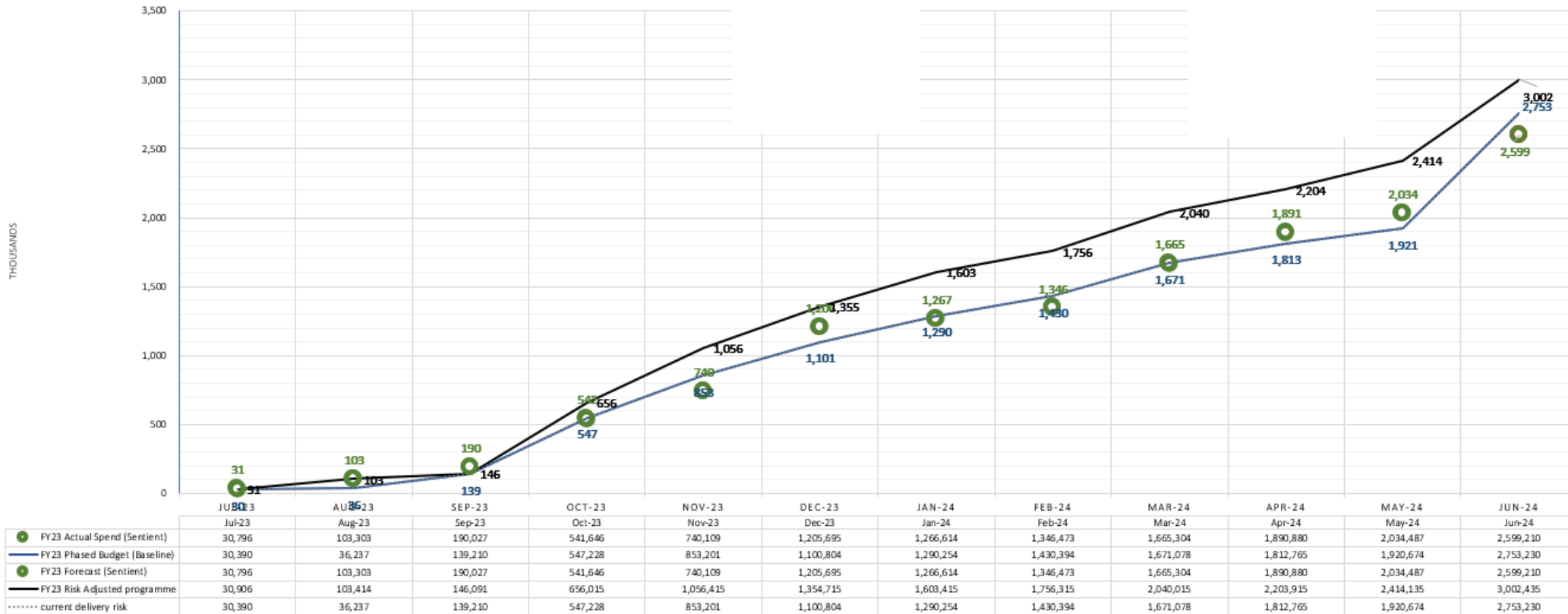
36658 - Citizens Advice Bureau - interior and exterior renewals - Waiheke

Interior works are progressing on the Waiheke CAB renewal works, we are expecting the building to be completed and ready for use by the end of August 2024.



PROJECT DELIVERY UPDATE

Financial Year 2023/2024 Work Programme – Q4 delivery update



We completed our financial year at the end of June 2024, we are very happy with our results and managed to achieve our overall team delivery KPI (Key Performance Index) of 90% at 94% across all our local board work programmes. For the Waiheke Work Programme (above) we delivered 94% of the budget and achieved our 90% KPI.

*Note. This does not include the storm funding that was allocated to Rakino Hall in May 2024.

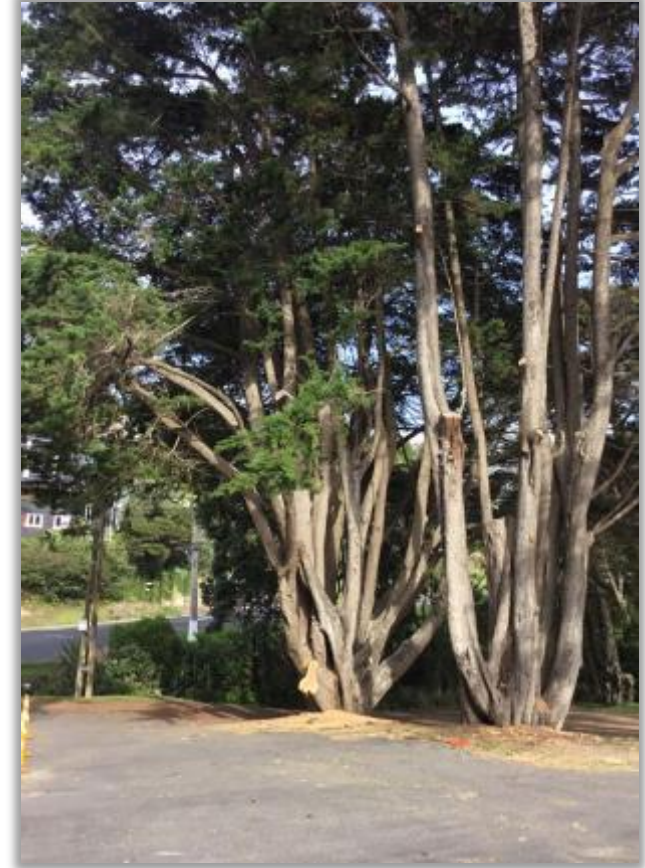


Unscheduled maintenance – Removal – Man O War



Treescape recently removed a historic pine tree in Man O War due to its deteriorating condition. The tree was completely dead and posed a hazard, with pinecones and large limbs frequently falling onto the road. The upper portion of the tree was mulched, and the substantial logwood was relocated to the beach, positioned against the bank. A commemorative plaque will be created and installed near the log to honour the tree's heritage, detailing its historical significance.

Request for Service – Proactive tree maintenance



Treescape recently carried out essential maintenance on a mature Macrocarpa tree at Little Oneroa. A significant deadwood limb was removed, and a lateral limb was pruned back to improve the tree's balance and reduce the risk of structural failure over the adjacent carpark. This careful work was undertaken to ensure the safety of the area while preserving the health and longevity of the tree.

Request for Service – Proactive tree maintenance



Treescape recently completed work on a large Eucalyptus tree in the centre of Oneroa. The team expertly removed dead wood and pruned the tree to reduce its overall size, enhancing its safety and health. This meticulous work not only improved the tree's structure but also ensured the safety of the surrounding area. Some action shots were taken of the crew at work, showcasing their skill and dedication during the operation.



NOTIFICATIONS

Land-owner approvals

Land Advisory

Land-owner applications received are assessed by Land Use Advisory and reviewed by Community Facilities staff. The board will be contacted for feedback in due course.

There were two Landowner approval applications **received** in the Waiheke Local Board area during June 2024:

- An application by Waiheke Pony Club to rebuild fire damaged club facilities at Te Huruhi Bay Reserve.
- An application by the owner of 13 Le Roy Road, Onetangi for the temporary use of Pōhutukawa Reserve to woodchip felled vegetation from their property. The vegetation will be lowered from the owner's property to the reserve by helicopter.

There were no Landowner approval applications **approved** in the Waiheke Local Board area during June 2024.



WORK PROGRAMME UPDATE

Changes to agreed FY25 Project Delivery Programme

Minor Change

Projects affected by minor change over the previous month:

ID REF	Activity Name	Change
	Nothing to report	

Substantial Change

Projects affected subject to substantial change:

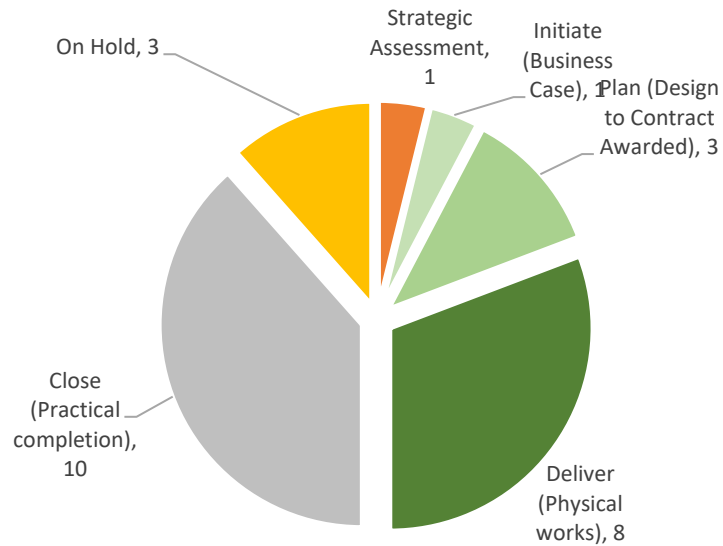
ID REF	Activity Name	Change
	Nothing to report	

PROJECT DELIVERY STATUS

Project Delivery

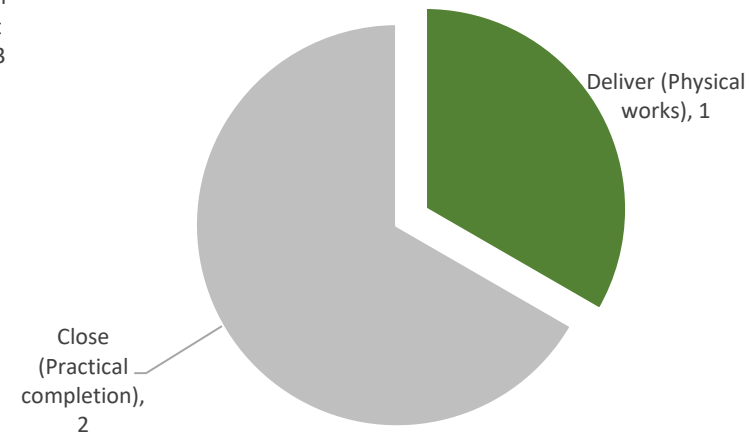
Annual work programme Local Board - Project Status

Total Number of Projects - 26



Annual work programme Local Board - Project Status

Total Number of LDI Projects - 3





PROJECT DELIVERY STATUS

			Initiate	Preliminary design	Detailed Design	Tender Process	Construction	Defects
			2023/2024 - Current year					
Activity Name	RAG	Local Board Commentary	Timeline	Q1	Q2	Q3	Q4	
Albert Crescent to Wharf Road - renew walkway and retaining wall	Green - On Track	Project complete November 2022.	Baseline Forecast/Actual					
Artworks and Community Centre - Comprehensive Renewal	Green - On Track	Current status: Draft recladding design for some sections of the building is complete for review. Next steps: Review design and finalise documentation to be lodged for building consent once construction budget has been reallocated.	Baseline Forecast/Actual					
Carpark and Rooding - Renewals - Waiheke	Green - On Track	Current status: Physical works has started on site. Next steps: Completed works and close project.	Baseline Forecast/Actual					
Catherine Mitchell Cultural Society building - interior and exterior renewals	Green - On Track	Project completed September 2023.	Baseline Forecast/Actual					
Citizens Advice Bureau - interior and exterior renewals - Waiheke	Green - On Track	Current status: Works commenced in May 2024. Timber weatherboards stripped and prepped for painting, exterior piles installed and braced, decayed and rotten weather boards discovered and replaced. Next steps. Complete the project at the beginning of the financial year 2024/2025, weather-dependent.	Baseline Forecast/Actual					
Hekerua Bay Reserve - renew path and install retaining wall	Amber - At Risk	Current status: Design works for the retaining wall are completed. Meet with stakeholders and discuss retaining wall alignment and current encroachment of the carpark. Retaining wall footings are being re-designed, access will be required from neighbour's land to install piles for retaining wall. Building consent documentation has been lodged. Site visit has been arranged with neighbour to discuss options and encroachment of carparking bay on council land. Next steps: Discuss options for footings and get permission from the neighbour to allow access for a digger to allow footings to be installed. Resolve access issues. Lodge consents for the retaining wall.	Baseline Forecast/Actual					
LDI minor capex fund FY2022/2023 - Waiheke	Green - On Track	Project completed October 2023.	Baseline Forecast/Actual					
Little Oneroa Reserve - renew play space, stairs and pathways	Green - On Track	Project completed February 2024.	Baseline Forecast/Actual					
Minor Capital works - Waiheke	Green - On Track	Current status: This budget is for the delivery of small works through the Facility Managers and items will be identified over the course of the financial year. Next steps: Delivery of minor capital works items.	Baseline Forecast/Actual					
Onetangi Sports Park - general renewals	Green - On Track	Current status: Prestart meeting held on site. Works have commenced on site with site setup and mark-out of services completed. Pile holes have been excavated and are ready for inspection. Portacom delivery is being aligned with the completion of the resurfacing of the entrance road. Next steps: Deliver and install Portacom, and connect services.	Baseline Forecast/Actual					



PROJECT DELIVERY STATUS

				Initiate	Preliminary design	Detailed Design	Tender Process	Construction	Defects	
				2023/2024 - Current year						
Activity Name	RAG	Local Board Commentary	Timeline	Q1	Q2	Q3	Q4			
Open space furniture, fixings, equipment, BBQs and signage - renew - 2023/2024 - Waiheke	Green - On Track	Current status: Scoping completed for the Onetangi Sports Park. We are currently investigating the lighting requirements to future-proof the project. Helipad fencing is currently being evaluated. Next steps: Complete procurement and start delivery.	Baseline							
			Forecast/Actual							
Open space furniture, fixings, equipment, BBQs and signage - renew - 2024/2025 - Waiheke	Amber - At Risk	The project is on hold. Scoping, investigations and programme physical works for the financial year 2024/2025 when the budget allows.	Baseline							
			Forecast/Actual							
Open space lighting - sports and amenity lighting - renew - Waiheke	Green - On Track	Project completed October 2023.	Baseline	█	█					
			Forecast/Actual	█	█					
Open space toilets - develop and renew stage two - Waiheke	Green - On Track	Current status: Investigation is underway at Omiha Beach toilet which has been closed due to recent slips. Next steps: Continue with investigation and design for Omiha Beach toilet and provide an update to stakeholders.	Baseline							
			Forecast/Actual							
Parks LDI quick response fund - Waiheke	Green - On Track	Project completed October 2023.	Baseline							
			Forecast/Actual							
Rakino Hall relocation - Rakino Island	Green - On Track	Current status: Mana whenua consultation is underway. Next steps: Proceed with a resource consent application.	Baseline					█		█
			Forecast/Actual					█		█
Tawaipareira Reserve stage two - replacement of play space, bike track, new flying fox	Green - On Track	Project completed March 2024. Planting are expected to commence before the end of the financial year 2023/2024.	Baseline	█	█	█	█			
			Forecast/Actual	█	█	█	█			
Te Whau Esplanade Reserve - stabilise Hitapa track	Green - On Track	Project has been closed, the following tracks have been renewed: Priority 4: Matiatia Owhanake (Matiatia Wharf to Owhanake Bay) - Track completed. Priority 5: Track completed. Priority 6: Glenbrook Reserve (Okoka Road through Glenbrook Reserve to Glenbrook Road - Track completed Priority 11: Matiatia to Owhanake sidetrack (The entrance is opposite the car rental at Matiatia and traverses past the car garaging business to Delamore Drive) - Track completed.	Baseline							
			Forecast/Actual							
Tracks and pathways - renew - 2021/2022+ - Waiheke	Green - On Track	Project has been closed, the following tracks have been renewed: Priority 4: Matiatia Owhanake (Matiatia Wharf to Owhanake Bay) - Track completed. Priority 5: Track completed. Priority 6: Glenbrook Reserve (Okoka Road through Glenbrook Reserve to Glenbrook Road - Track completed Priority 11: Matiatia to Owhanake sidetrack (The entrance is opposite the car rental at Matiatia and traverses past the car garaging business to Delamore Drive) - Track completed.	Baseline							
			Forecast/Actual							



PROJECT DELIVERY STATUS

			Initiate	Preliminary design	Detailed Design	Tender Process	Construction	Defects
			2023/2024 - Current year					
Activity Name	RAG	Local Board Commentary	Timeline	Q1	Q2	Q3	Q4	
Tracks and pathways - renew - 2022/2023 - Waiheke	Amber - At Risk	Project put on-hold due to budget changes in the financial year 2024/2025 3-year work programme.	Baseline					
			Forecast/Actual					
Waiheke - remediate 2023 storm and cyclone damaged assets	Green - On Track	Current status: The list provided by the stakeholders is currently being reviewed and prioritised internally, to be assigned. Next steps: ongoing monitoring and site visit to be completed with engineer to provide input.	Baseline					
			Forecast/Actual					
Waiheke - Urban Forest (Ngahere) Strategy - Growing Phase	Green - On Track	Current status: The urban forest specialist engaged with a contractor to do the physical works (procure trees and planting of trees). Next steps: Complete procurement and start physical works.	Baseline					
			Forecast/Actual					
Waiheke Community Art gallery - replacement art gallery floor	Green - On Track	Project completed September 2023.	Baseline					
			Forecast/Actual					
Waiheke Library - refurbish building	Green - On Track	Current status: Timber staining complete Next steps: Install a new roof membrane. There is a hold-up getting the roofing contractor on site due to resourcing issues resulting in works planned for spring 2024 to ensure no conflict with the library 10 year celebrations.	Baseline					
			Forecast/Actual					
Walkways and paths - Renewal - Waiheke	Green - On Track	Current status: Renewal works at Church Bay Reserve pathway completed. Next steps: Start scoping for future project works.	Baseline					
			Forecast/Actual					