

Waiheke Local Board Workshop Agenda

Date of Workshop: Wednesday 16 October 2024

Time: 10:30

Location: Waiheke Local Board, 10 Belgium Street; MS Teams

Time	Workshop Item	Governance role	Purpose	Presenter(s)	Proposed Outcome(s)
10:30	Item 1 AT Monthly update Attachment Presentation – Waiheke Local Board update	Keeping informed	Review progress with projects	Richard LaVille <i>AT Manager, Waiheke</i> Alex Elton-Farr <i>Elected Member Relationship Partner</i> Rebecca Temple <i>AT Senior Relationship Manager</i>	Members will be updated on various projects across the island.
11:30	Item 2 Natural Environment Targeted Rate (NETR) update Attachment Presentation – Natural Environment Delivery – Islands - update	Keeping informed	Review progress with projects	Deryn Dromgoole <i>Senior Conservation Adviser, Natural Environment Delivery</i> Jonathan Miles <i>Team Manager Islands, Natural Environment Delivery</i>	Members will be updated on projects being undertaken by NETR funding.
12:30	Lunch Break				
13:00	Item 3 Targeted Rates process Attachment Presentation – Targeted Rates process, October 2024	Keeping informed	Informal Dissemination	Aaron Matich <i>Principal Adviser, Financial Policy</i>	Members will be informed about the process of developing new targeted rate proposals.

Time	Workshop Item	Governance role	Purpose	Presenter(s)	Proposed Outcome(s)
14:00	Work Programme 2025/2026 Strategic Prioritisation Attachment Presentation – Local Board Annual Planning strategic priorities	Setting direction/prioritisation	Confirm priorities	Janine Geddes <i>Senior Local Board Adviser</i> Lorraine Gropper <i>Local Board Adviser</i>	Members will discuss priorities for the 2025/2026 Work Programme, as part of the Local Board Annual Planning process.

Governance Role

1. Accountability to the public
2. Engagement
3. Input to regional decision-making
4. Keeping informed
5. Local initiative / preparing for specific decisions
6. Oversight and monitoring
7. Setting direction / priorities / budget

Role of Workshop:

- (a) Workshops do not have decision-making authority.
- (b) Workshops are used to canvass issues, prepare local board members for upcoming decisions and to enable discussion between elected members and staff.
- (c) Members are respectfully reminded of their Code of Conduct obligations with respect to conflicts of interest and confidentiality.
- (d) Workshops for groups of local boards can be held giving local boards the chance to work together on common interests or topics



Waiheke Local Board workshop



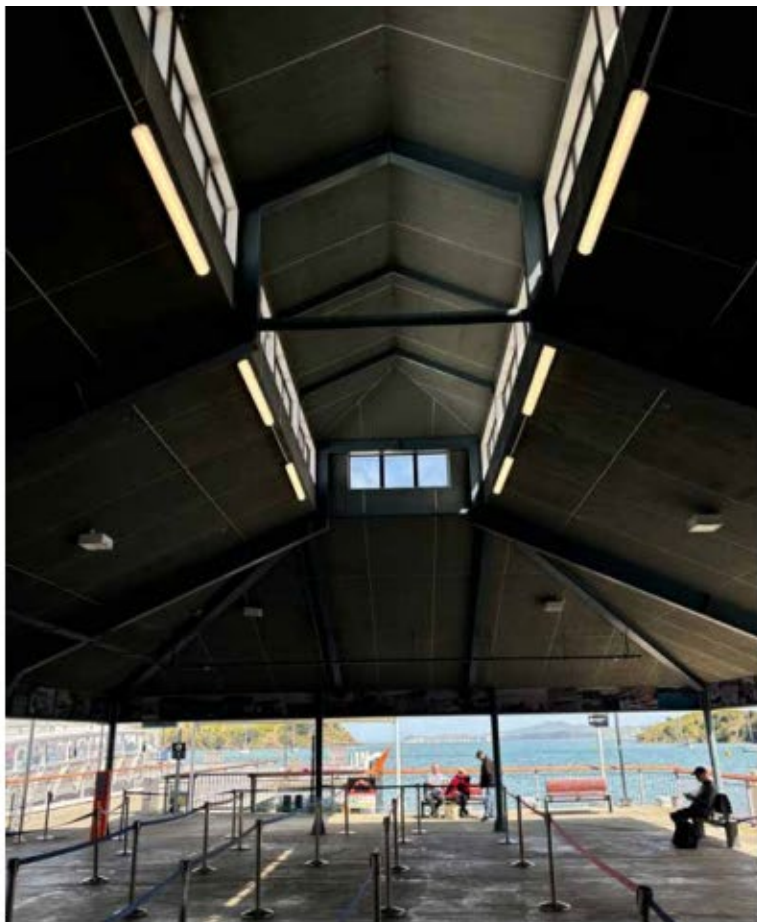
16 October 2024



Matiatia paint refresh



Matiatia paint refresh



Matiatia paint refresh



Matiatia paint refresh



Matiatia paint refresh



Matiatia paint refresh



Matiatia paint refresh



Explorer bus queue



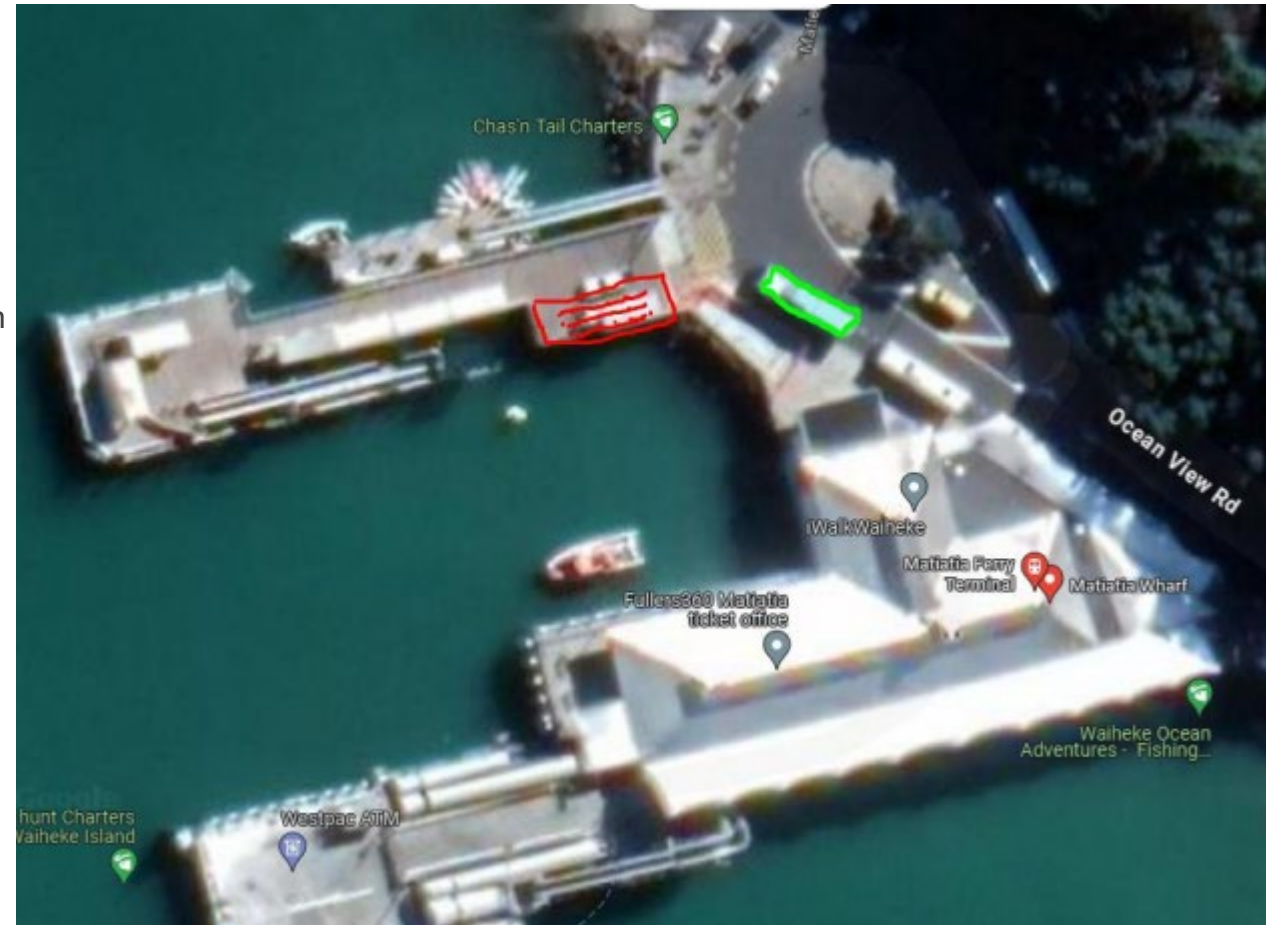
Explorer bus queuing



Explorer bus queuing

Key considerations:

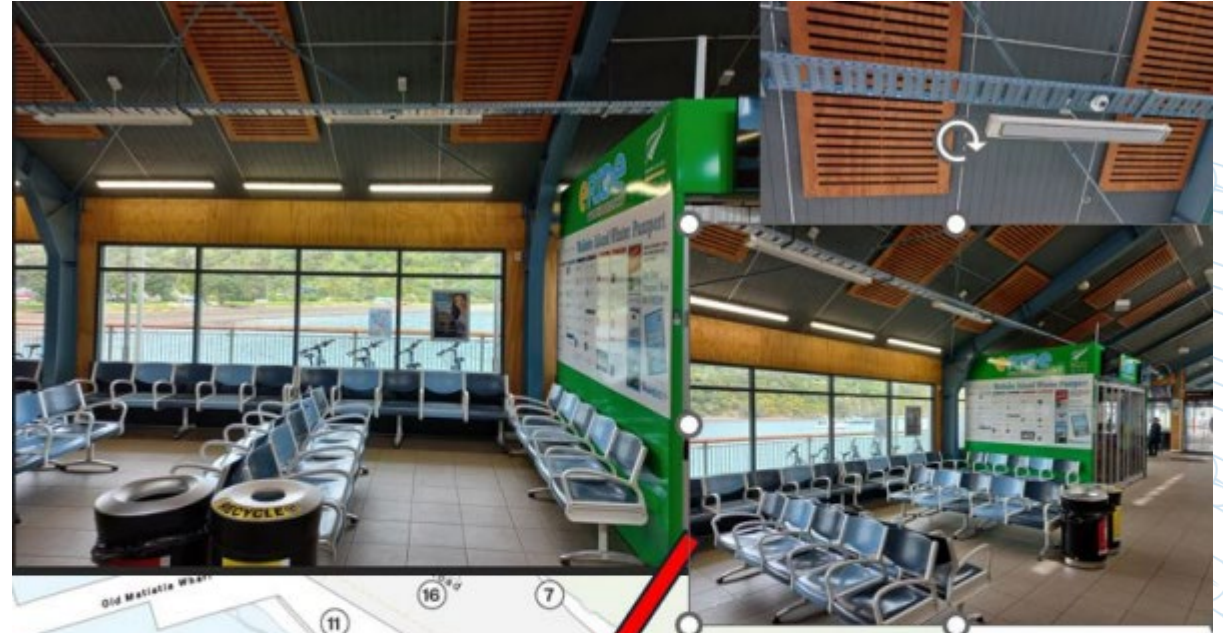
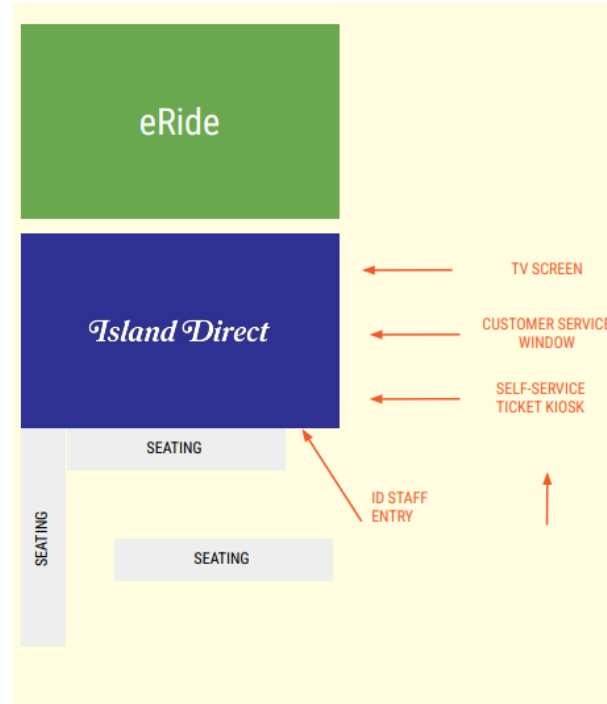
- Needed a safer way of queuing high volumes of customers
- Summer time operations
- Clear of Island Direct customers
- Explorer bus customers to be held until metro services depart and can then load onto the waiting bus
- Explorer bus not to enter the key hole until metro services have departed
- Alleviates over-crowding on the eastern footpath
- Allows other bus operators to utilise the footpath for their guests



Island Direct service kiosks



Island Direct kiosk – Maitiatia / DTFT



Hospital bus access improvements



Hospital bus assistance

- Total mobility – direct wharf access 25% co-pay (around \$5?)
- Wheelchair support – call line to the facilities team to support bus to ferry movements
- Other suggestions



Canopy works



Eastern Canopy – over bus queuing area

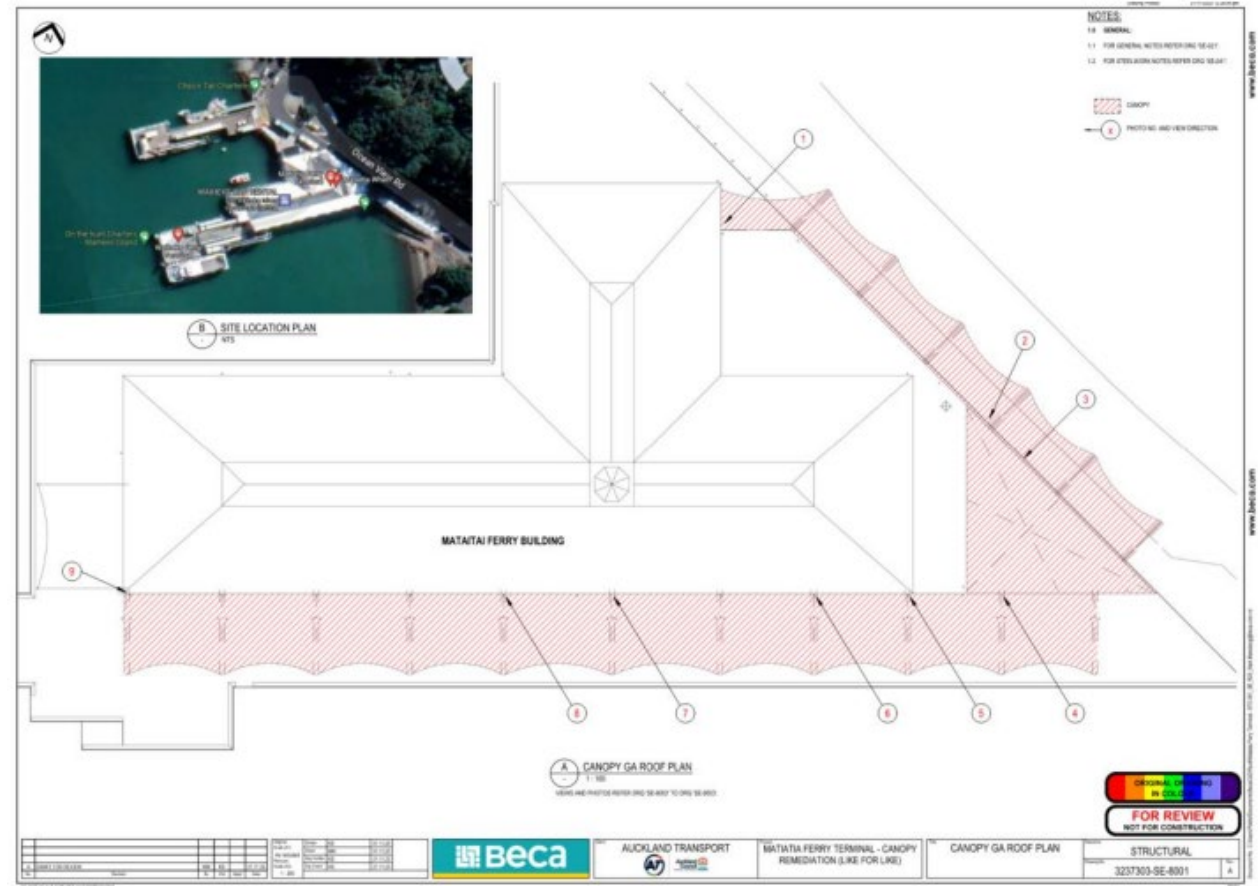


- Eastern canopy was removed to clean and address some corrosion issues
- Upon removal, additional cleats found in small gap between canopy and roof
- Further ponding and drainage issues established
- Scope increased and project put on hold to review in alignment with other Matiatia discussions such as Pier 3 shelter.
- Time required to investigate if replacing the canopy like for like was the best way forward and to consider alternative options if could canopy could be similar to look and feel of any Pier 3 shelter



Eastern Canopy – bus queuing area continued...

- Eastern canopy fabricated and delivered to site
- Reinstating the canopy over the bus queue area requires additional time on site due to increase in scope
- Approvals for TMP and ATW being sought to see if contractor can get to site ASAP but will mean site works throughout November
- In parallel, temporary shade options being considered if cannot replace the canopy prior to December



Memorandum

To: Waiheke Local Board
 From: Richard La Ville, Operations Manager Waiheke & Gulf Islands Airfields
 Alex Elton-Farr, Elected Member Relationship Partner
 Rebecca Temple, Real Time & Response Manager

Date: 16 October 2024
 Subject: **AT monthly update 10.30am – 11.30am**

Auckland Transport operations and projects update

Activity	New updates
1. Matiatia Wharf works	1. Paint refresh 2. Explorer Bus queuing 3. Island Direct service kiosks 4. Canopy works
2. Downtown ferry terminal	Hospital bus access improvements
3. Brief update	1. The Esplanade 2. Seawall protective works

Permanent swing gates
The Esplanade, Waiheke 

**We're proposing to make
The Esplanade safer for
walking, cycling and
horse riding**

Kōrero mai
**Have
your
say**

1 Pedestrian path with geocell mat
2 Swing gate
3 Timber bollards




About the project:
 Between 2010-2013, the unpaved section of The Esplanade was closed for a trial and repairs. Auckland Transport and the Waiheke Local Board are proposing to reprioritise the unpaved section of The Esplanade for active modes use only. This would involve installing permanent swing gates to restrict vehicle access.

Proposal benefits:

-  **Improved safety for people walking, cycling and riding horses**
-  **Preserving the narrow, bendy, and unpaved section of road**

Emergency vehicles will be able to access this section of road at all times.

Do you support making the unpaved section of The Esplanade for active modes only?

Provide your feedback by 31 October 2024



Let us know by scanning the QR code or visiting haveyoursay.at.govt.nz/esplanade-gates

Want to get in touch? Email ATengagement@at.govt.nz



Natural Environment Delivery - Islands - update

Including Waiheke Collective Coordinator-
Conservation Advocate update

July-Sept 2024



ES NED- NETR and BAU Project updates

Project	Updates, actions and next steps / Opportunities
Waiheke Feral Pig and Goat Eradication	<ul style="list-style-type: none"> No new detections Continue communications and surveillance actions Further support from LB around communication of rules and ideas for identifying owners
Waiheke Site Led Programmes - BFA sites/species protection	<ul style="list-style-type: none"> Giant Kokopu- pest animal management has achieved very low levels of rodents Hoping to expand to Te Matuku GK site in collaboration with landowners and community in this area Pest plant control and planting completed in Awaawaroa and other sites- Further \$ for planting in Awaawaroa- collaboration with Environmental Services, Gulf Trees, Waiheke Resource Trust, Forest & Bird
Waiheke Collective initiated Biodiversity Strategy-	<ul style="list-style-type: none"> ES supporting Ngāti Paoa iwi trust to lead the development of a Waiheke Biodiversity Strategy. Ngāti Paoa see this as a priority and acknowledge that it needs to build on the work previously done and to connect with other iwi and the range of participants involved in the earlier work The next step is for Ngāti Paoa to meet with the Collective members, local board and other iwi with links to Waiheke Island. A biodiversity strategy will be a valuable guide and reference for a range of work from many parties, building on the great work already being done on Waiheke

ES NED- NETR and BAU Project updates

Project	Updates, actions and next steps / Opportunities
Ponui Island- Priority Places BFA support	<ul style="list-style-type: none"> • Southern Farm- Fencing. Supported 50/50 project to protect the Kauri Forest and wetland Ecosystems. Further collaboration occurring with Sustainable Schools (Trees for survival) who are growing plants for restoration. • Biosecurity checks and actions are in place to support and educate. • Future pest monitoring - Stoat detection work needed and collaboration with North and Central farms
Rakino Island- Site Led BAU	<ul style="list-style-type: none"> • Continuing with pest plant control across the motu. • trial translocation being monitored for future potential • Improving biosecurity detection measures
Noises Group- Site Led BFA	<ul style="list-style-type: none"> • Continuing to support with pest plant management as required
Motutapu- Eradication	<ul style="list-style-type: none"> • Complete biannual Old Mans Beard control
Motukaha and Papakohatu (Crusoe)- BAU	<ul style="list-style-type: none"> • Complete annual / biannual pest plant control • Support completion of 10-year lizard monitoring programme

Site Led BFA sites/species protection

Planting- opportunities

- Support funding top up to support continued planting in priority sites
- \$ for plants and labour to plant and maintain the plantings whilst establishing not currently funded by Environmental Services



Progressive containment/Community engagement

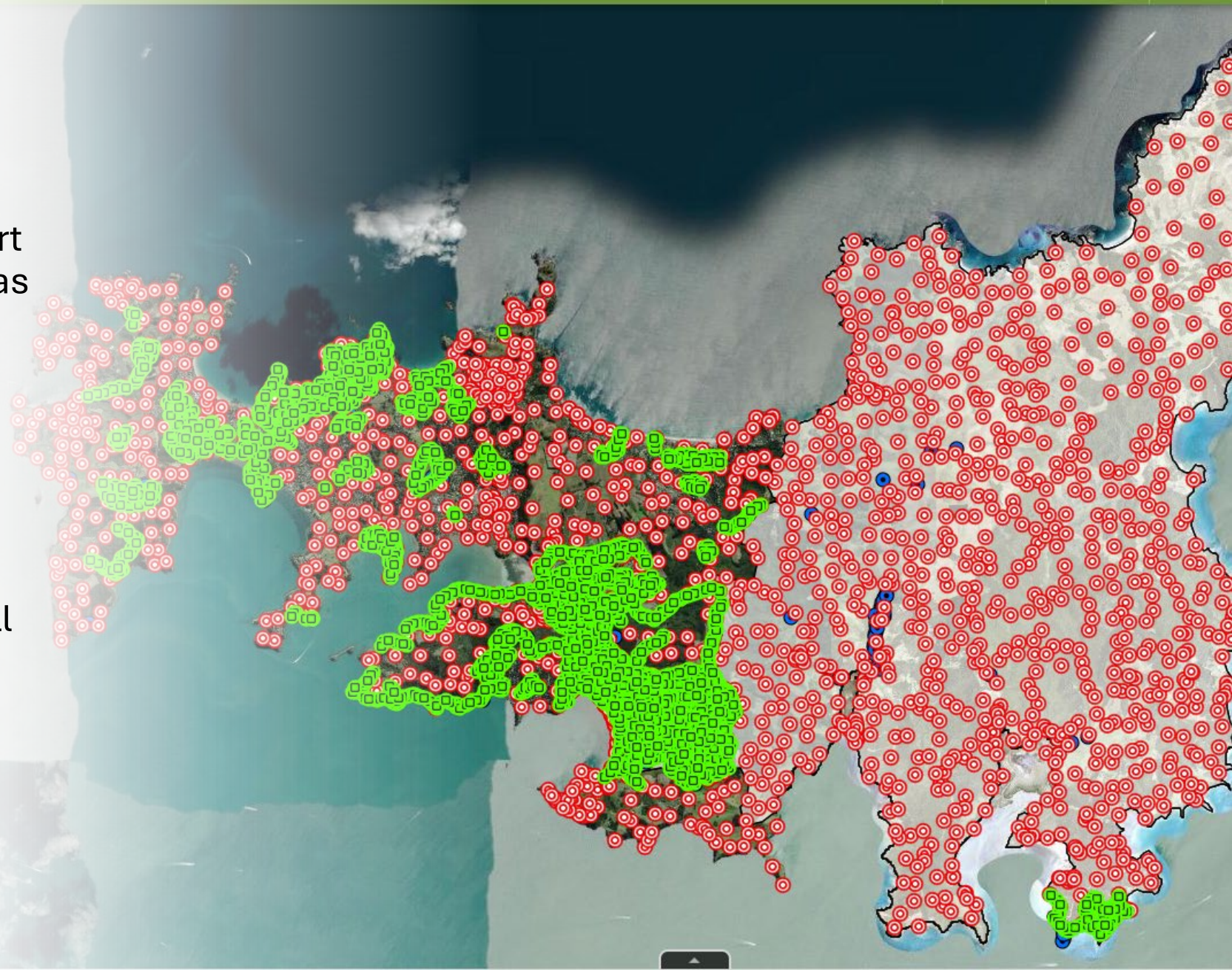
Moth plant-opportunities

- Support with comms community advocacy programme promotion, FB etc labour weekend onwards
- Support funding - top up to support RFS where not Environmental Services priority sites- i.e. community engagement in urban areas
- Weed Amnesty- April 2025??



Ratbuster- Halo opportunities

- Potential increased support for Ratbuster coordinator as required and community pest control.
- Environmental Services \$ will continue to focus on high value sites- species protection work
- Te Korowai o Waiheke \$ will continue to focus on eradication and outcomes



Local Board funded ES-NED Projects

- Environmental Grants-
\$25,000
 - Motutapu Tools \$1976.47
 - Hekerua Group Coastal
planting \$800
- Waiheke Collective
Coordinator \$25,000
 - **Potential to increase
coordination funding support
in 25-26**



Local Board and ES Grant Funded - Waiheke Collective Coordinators Update - JUNE - SEPTEMBER 2024



June Collective Hui: Collective Spotlight is the Charter Review update.

August Collective Hui: Collective Spotlight with Dr Monica Peters, from Te Korowai o Waiheke

Waiheke Collective Film Festival 2024 was held from 15 - 18 August. It went well, with good attendance and feedback.

- Films: Fight for the Wild Episodes 3 & 4, Mauri, COMMON GROUND, Outgrow the System, Albatross
- Hosts: TKOW, Ngāti Paoa ki Waiheke, Kai Waiheke, Waiheke Marine Project
- In numbers: Guest Speakers: 8 | Total attendees 205 | Total ticket sales: \$2849 | Total revenue is TBC awaiting 2 film invoices

Responsible Pet Ownership: Waiheke Quick Response Grant was approved to initiate a the campaign (pay for the graphic designer fees). The update of the RPO brochure, branding and Facebook page is in process with the first draft in review with the RPO comms subgroup and the designer. We are also looking into the process of initiating a local bylaw for cats to be desexed and microchipped on Waiheke. The next RPO group meeting is on the 12th of Sept.

Matariki Together with TKOW, WMP and WRT we held an activity with tamariki from Te Huruhi Ngā Purapura akoranga. Tamariki learnt how to weave stars using harakeke, and made matariki hopes for the future and wishes for Te Taiao, their whānau and themselves - resulting in a library display during Matariki.

WilderFest 2025 In planning with Waiheke Resources Trust and Auckland Council (Music In Parks) - Dependent on location at this stage.

Training: Attended training sessions supported by TKOW: Te Ao Māori with Drina Paratene.

The Coordinator has sent an EOI for the fully funded Individual Leadership Coaching Programme offered by Auckland Council.

Waiheke Collective Film Festival - In Pictures



Sustainable film festival at community cinema

The Waiheke Collective is hosting its second annual film festival, showcasing thought-provoking films to raise awareness on environmental and social issues. Held at the Waiheke Community Cinema, the festival will run from Wednesday 14 to Sunday 18 August and feature films that touch on a wide array of conservation and social issues, including indigenous solutions, waterway regeneration, biodiversity loss, community impact, Predator Free 2050 and food resilience. Guest experts will offer interactive discussions with the audience.

The screening of the first film, *Fight For the Wild*, at 6.30pm on Wednesday 14 August will include discussion from predator ecologist Dr Elaine Murphy, Te Korowai o Waiheke social specialist Dr Monica Peters and project director Jenny Holmes. "Evidence of native bird numbers flourishing when stoat numbers are significantly reduced is obvious every day on Waiheke Island," Jenny says. Ngāti Paoa Ki Waiheke will introduce *Mauri*, which screens at 6pm on Thursday 15 August, giving context to how the film resonates with Paoa and their mahi with the Waiheke Marine Project. Food system change expert Emily King and Livné Ore of Kai Waiheke will introduce *Common Ground*, the highly anticipated sequel to juggernaut documentary *Kiss the Ground*, which screens on Friday 16 August at 7pm. Emily and Livné will discuss the Waiheke Food Charter, which launched in 2023 its role in making the local food system become more sustainable.



Te Korowai o Waiheke social specialist Dr Monica Peters will be part of the *Fight For the Wild* panel and will discuss topics raised in the film.

WAIHEKE ADULT LEARNING

SHORT COURSES & WORKSHOPS

Waiheke Open Orchestra
Sundays 3pm - 5pm
FREE

Songbirds
Mondays 1pm - 2pm
FREE

Life Drawing with Roger Mason
Saturday 1pm - 4pm
24 August \$95

Intro to Knitting with Hilary Kerrod
Tuesdays 4pm - 6pm
27 August - 17 September \$95 or \$50 (14 - 24 yrs)

Food Safety
Wednesday 12:30pm - 4:30pm
28 August \$120

Intro to Spreadsheets
Mondays 6:30pm - 8:30pm
2 September - 16 September \$50

Rongā Level 2: Lettins & Potions with Donna Kerridge
Saturday & Sunday 9:30am - 4pm
7 & 8 September \$235

Introduction to Koro with Irina Lyanguzova
Fridays 1pm - 3pm
6 September - 27 September \$50

Te Tiriti o Waitangi with Treaty People
Saturday 9am - 4:30pm
14 September \$40

Learn to Sew with Bea Lorimer
Saturday 1pm - 5pm
21 September \$60

Digital Support with Jim Pilling
Wednesday morning by appointment FREE

See our full programme & enrol online
www.waihekelearning.co.nz or phone 07722668
Follow us on Facebook and Instagram



Young Waiheke conservatonsist Charlie Thomas will host the screening of *Albatross*. He will share his experience working with these birds at Kure Atoll in 2020.

can address that ourselves on Waiheke," says Emily. Waiheke Resources Trust hosts the screening of *Outgrow the System* at 4.30pm on Saturday 17 August. The trust's Kristin Busher will share how the context of the film links to the work the trust is doing with the local board to enact the Waiheke Local Board Climate Action Plan and the local actions that help mitigate climate change. In the final screening, the Waiheke Marine Project will host *Albatross* alongside young Waiheke conservatonsist Charlie Thomas from 4pm on Sunday 18 August. In 2020, Charlie spent nine months on Kure Atoll (close to Midway) working with the island's bird species. He will share his experiences and how he tackles plastic pollution through art and conservation action. Tickets to the festival cost from \$10 to \$15. To purchase these or learn more about the festival visit waihekecollective.org. • *Silvia Massa*



Barbara Robinson's mixed media work *Shifting Shores* in the *Members Show*. Photo Sandra Chesterman

It's definitely in the genes as well." Responding to the brief's kaupapa around the waka and its lashings, her proposal spoke, she says, "of the navigational journey of Māori to Aotearoa, what a waka represents to us, our connection to whenua and the different rocks we have that I am connected to, use in my practice and could incorporate into the pieces". Her proposal accepted, the commission would see her create one hundred and eighty 25cm tall angled vases for the classic rooms of the hotel, seven sets of three linked vases for the junior suites and a single larger elegant vase for the Presidential suite.

The shape of the angled vase is based on the female form of Hinekururangi, the goddess of clay and the glazes used incorporate many of the different rocks associated with her. Fine muka cordage adorns the single vase and laces together each of the grouped series - the negative spaces between those referencing tukutuku designs. McDonald throws each piece on the wheel - and this commission had to be fulfilled on top of the ongoing production of the domestic ware her company is known for. Logistical organisation was critical. Around 20,000 kgs of the commercial

clay she wanted for its consistency, durability and texture, was ordered from Palmerston North, glazes ordered in bulk to ensure there would be no shortages. She set a quota for each week and as the pieces came out of the kiln, she and technical assistant Julia Mack would sand them, check that they were immaculate, box them and stack them in a spare room in her house. "I've learned from being a business person," she says, "that I have to be organised. I'm busy and I can't just fly by the seat of my pants. I had to get it right to deliver on time." Busy is an understatement. She's a mum and her business has three aspects - direct sales to online customers from her website, wholesale to gift shops on the island, in Auckland, Wellington and Christchurch, and keeping time to do art projects for herself. "I was proud that I got the commission and really excited. I just felt like it was my time to shine. And I wanted it to be fun and great for everybody - and it was." Esther can be contacted at www.thea-ceramics.com or on Instagram at [thea_ceramics](https://www.instagram.com/thea_ceramics). Mike Crawshaw's exhibition *Memories of the Future* continues at the Waiheke Community Art Gallery / Te Whare Taonga o Waiheke until 4 August. The *Members Show* until 18 August. The Red Shed's watercolour exhibition will continue until the end of the month. Anton Forde's *Papare Eighty-one* will be on show at Pātaka Art + Museum until 13 October. • *Sandra Chesterman*

WAIHEKE COLLECTIVE FILM FESTIVAL

AUGUST 14-18

WAIHEKE CINEMA








ENTRY TICKET \$10/15

HOSTED BY: **WAIHEKE MARINE PROJECT** **KAI** **WRT**

SUPPORTED BY: **Waiheke Local Board**

TICKETS AVAILABLE AT WWW.WAIHEKECINEMA.CO.NZ



Anton Forde's *Papare Eighty-one* showing at Pātaka Art and Museum in Porirua until 13 October.

Gulf News Article - August 2024

Gulf News ad August 2024 (x 4)

Waiheke Collective Matariki - In Pictures



Targeted rate process

Waiheke Local Board workshop

16 October 2024



Overview

- Statutory roles, responsibilities and considerations
- Process and timeline for adopting a targeted rate



Statutory roles and responsibilities

- The Governing Body has statutory responsibility for setting rates
- Local boards can develop new local targeted rate proposals and refer them to the Governing Body for consideration
- Local board role includes:
 - initiation and development of a proposal
 - agreement and recommendation to Governing Body to consult
 - consideration of feedback from consultation
 - recommendation to Governing Body to adopt



Key decision-making requirements

- When making these decisions the council must:
 - identify all reasonably practicable options and assess the options in terms of their advantages and disadvantages
 - consider the views and preferences of persons likely to be affected by, or to have an interest in, the proposal.
- Council must consider matters in S101(3) of the LGA when determining funding sources for council investments
- This involves elected members using political judgement and considering the proposal in the context of council's funding decisions as a whole

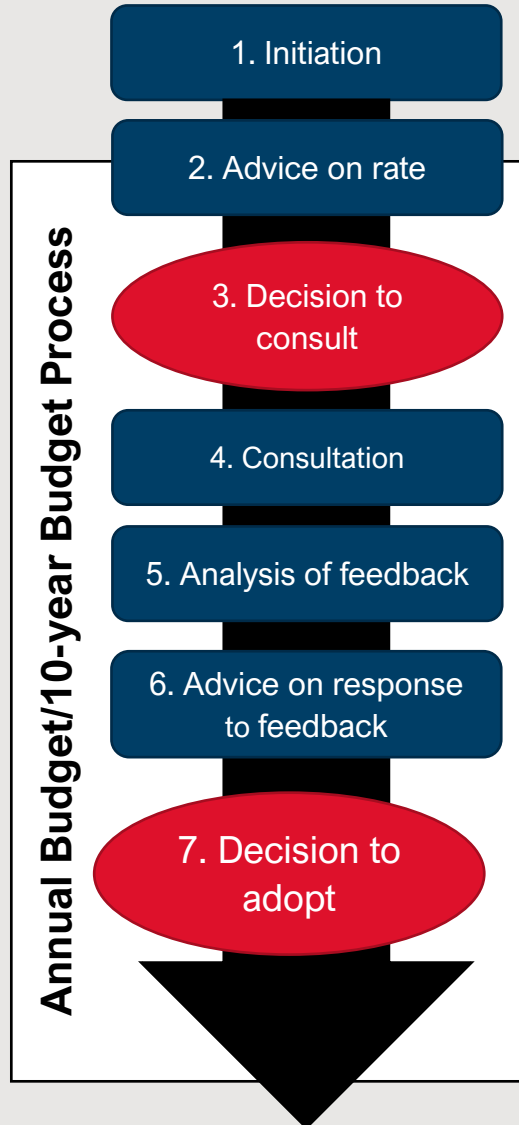


Section 101(3) considerations

- In relation to investment proposal the council must consider
 - Contribution the investment makes to community outcomes
 - Benefits to community as a whole or particular groups of ratepayers
 - Whether the council need to invest is caused by the actions of groups or individuals?
 - How long the benefits are expected to last?
 - What are the costs and benefits, including in relation to transparency and accountability, of funding the activity distinctly from other activities?
- The council must then consider the overall impact of the funding option on the community – such as affordability and impact on access/use of services



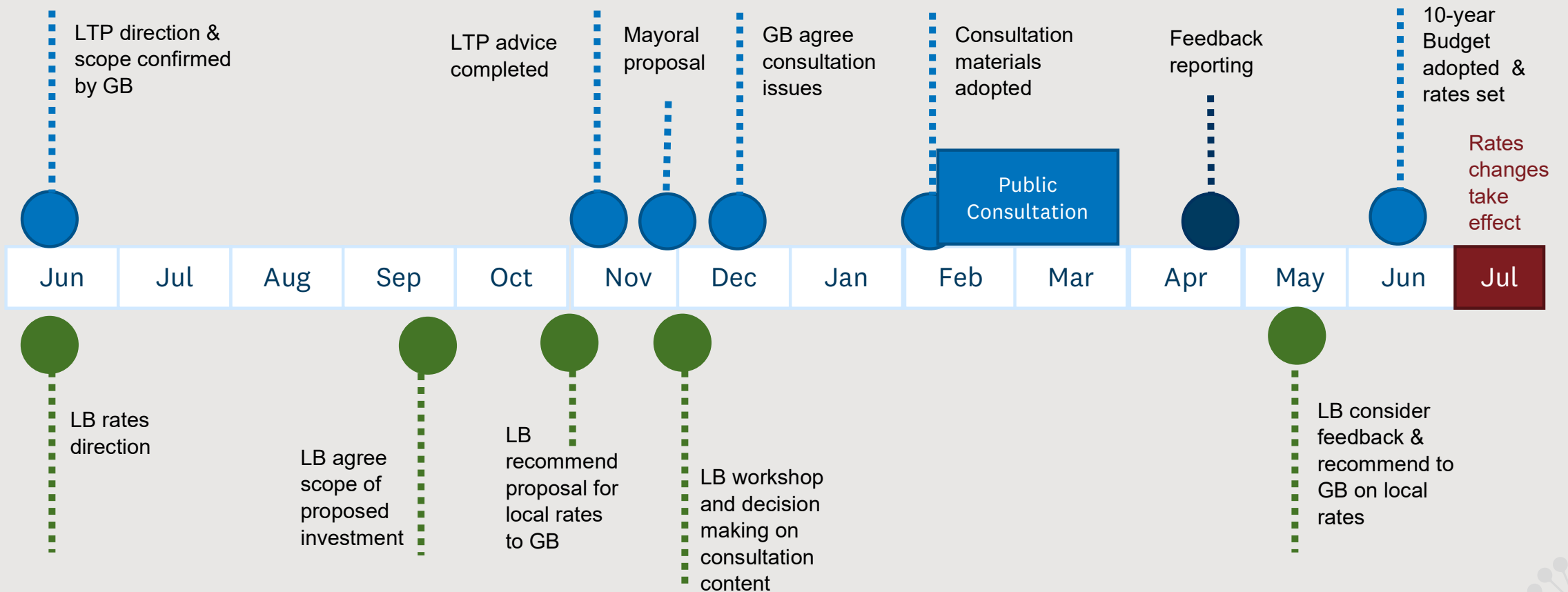
Process for adopting a targeted rate



- Introducing a targeted rate can only be made as part of an Annual Budget or 10-year Budget
- Consultation and decision making on a targeted rate occurs as part of this process
- The timeframe for decision making is therefore driven by the budget process
- A key requirement is to ensure the initiation and advice phases start early enough to meet the timeframe for budget decision making



Decision making timeline – rough estimates



Investment proposal key considerations

- The mix of operating expenditure vs capital expenditure
 - operating expenditure must be funded in the period it occurs
 - capital expenditure is debt funded and is recovered over time – incurs interest costs
- Investment in assets (capital expenditure) will incur ongoing depreciation and maintenance costs - how will these be funded?
- The general timing of the investment (which years) – this will impact interest, asset owning costs, and inflation
- Agreement on how the risks (such as cost overruns, delayed investment, capacity to deliver, etc) will be managed?
- Which costs the targeted rate is expected to cover vs funding from other sources?



Pātai?



Local Board Annual Planning 2025/2026

September 2024



Local Board Annual Planning

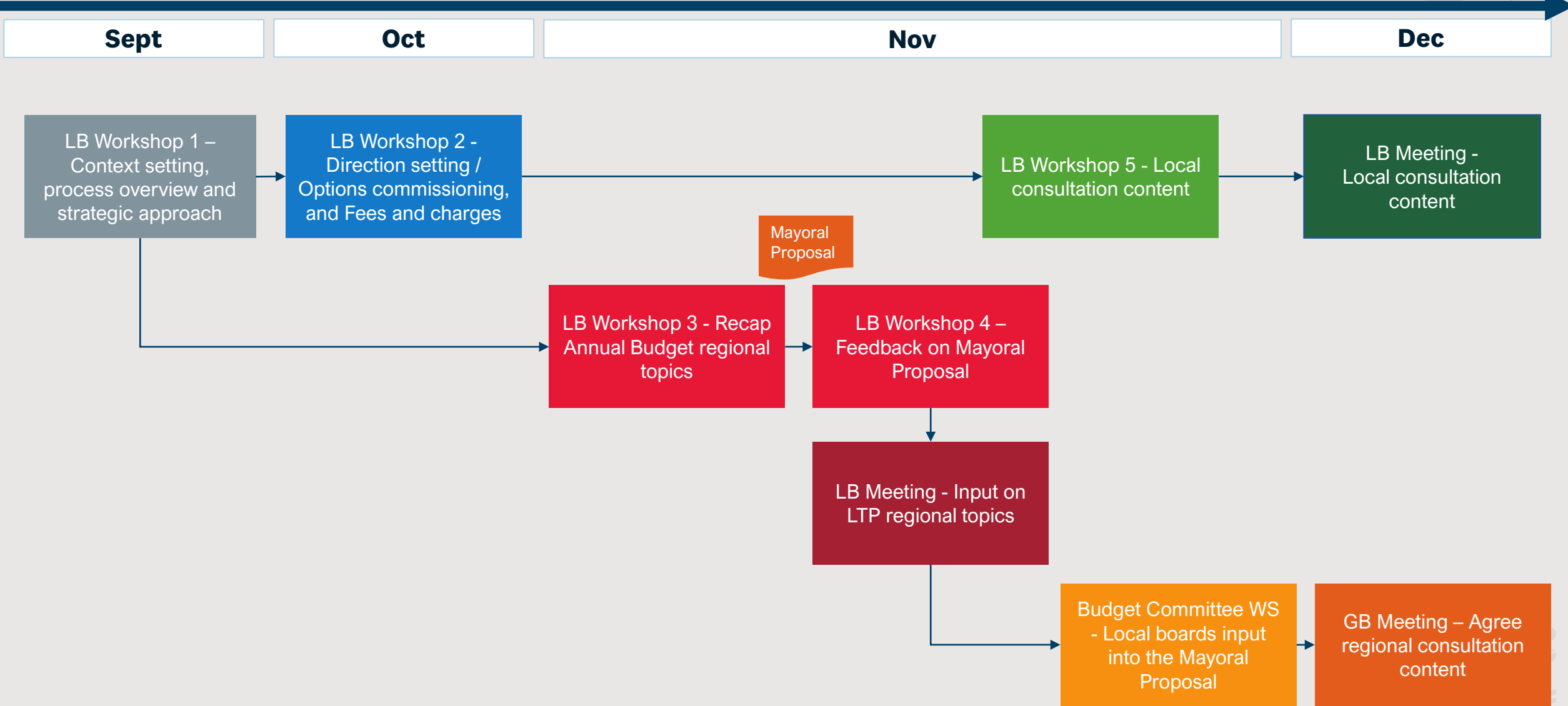
**Input into
regional
Annual
Budget**

**Local board
agreements**

**Local board
work
programmes**

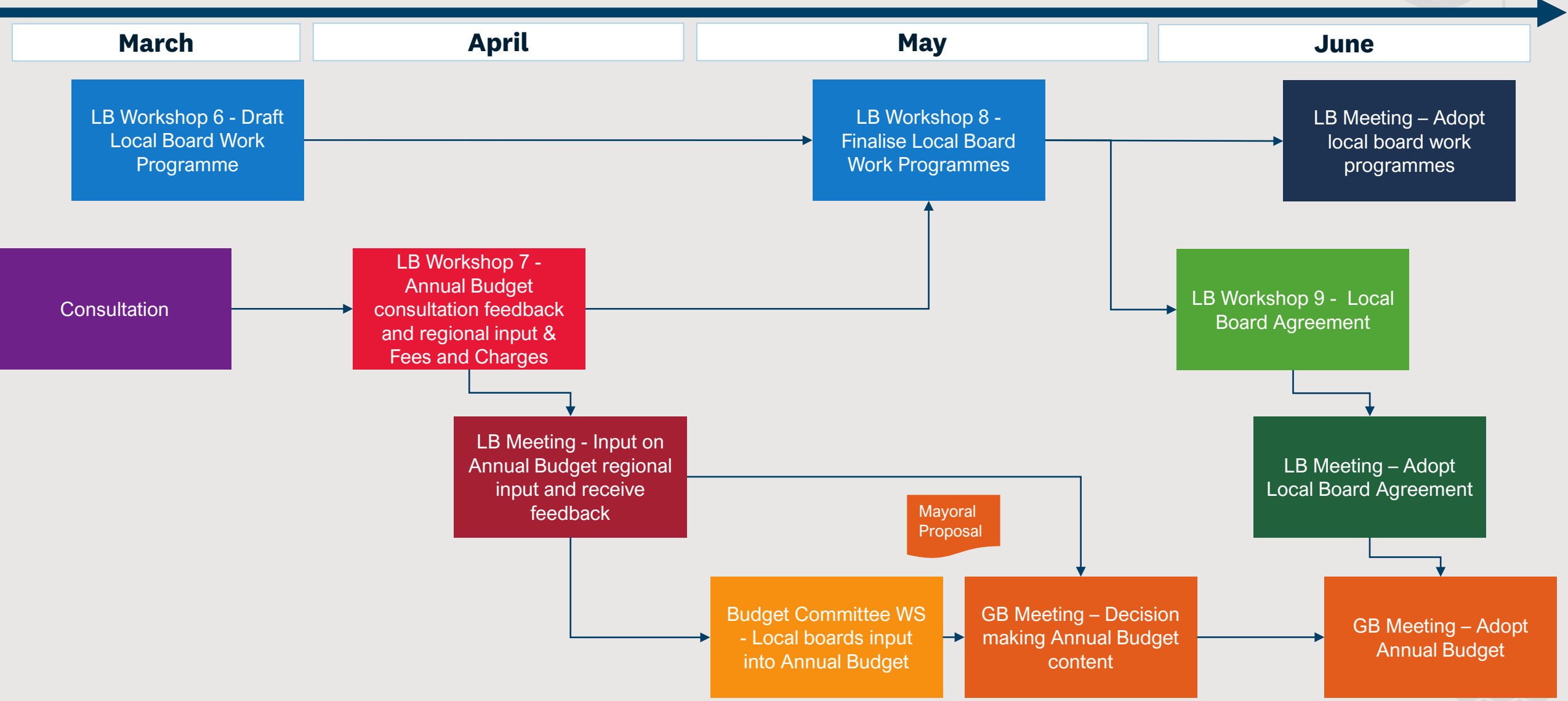


Timeline (first half)





Timeline (second half)



Annual Budget 2025/2026



Mayoral and Councillor Direction

Key message:

Continue the progress made in the Long-term Plan 2024-2034

Specific advice areas:

- CCO Reform
- Major Events Funding
- Planning & Paying for Growth



Overall budget approved through the LTP

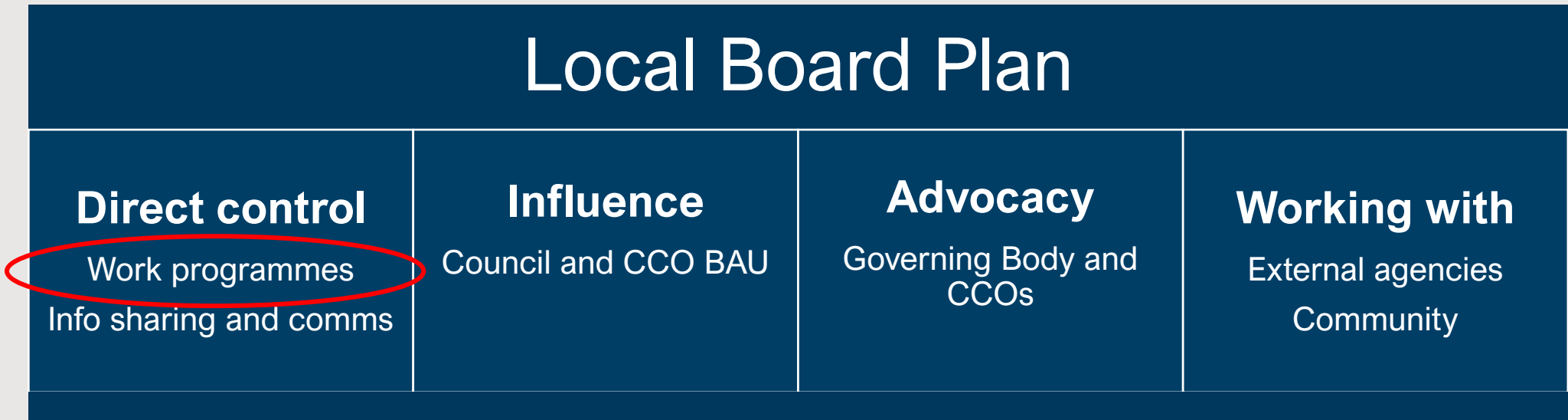
	2024/2025	2025/2026	2026/2027
Capital Investment	\$4.3 b	\$4.2 b	\$4.1 b
Operating expenditure	\$6.1b	\$6.5b	\$6.8b
Average residential rates increase	6.8%	5.8%	7.9%



Local Board Work Programmes - Strategic Direction



Achieving Local Board Plan objectives occurs through a variety of mechanisms



← More control (scope, scale and impact?)

→ Less control (scope, scale and impact?)



Many moving pieces

- Fairer Funding implementation
- Delivering Differently business case
- Matapopore / Portfolio Review
- More empowered local boards
- Recent organisational restructure



Local Board Work Programme – Fairer Funding

From 1 July 2025, local boards will move to a fairer allocation of local board funding, with additional funding approved through the LTP.

The distinction between LDI and ABS budgets will also cease to exist.

The Waiheke Local Board has been allocated additional budget of \$1.1 million opex (total \$7.4 million) and \$2.4 capex (total \$3.5 million)



Local Board Work Programme – Fairer Funding

The fairer funding formula is based on

- 80% Population
- 15% deprivation
- 5% land

1% for Aotea Great Barrier Local Board and

2% for Waiheke Local Board

If you are receiving additional Fairer Funding budget, you may want to reflect on which of these factors are relevant to your board and require further investment



Capex vs Opex

- Capex
 - Catch up on deferred works
 - Focus on renewals
 - Some have big projects ongoing/planned
- Opex
 - Different for every local board
 - Will work with you in the context of your funding situation
 - Local context will impact opportunities

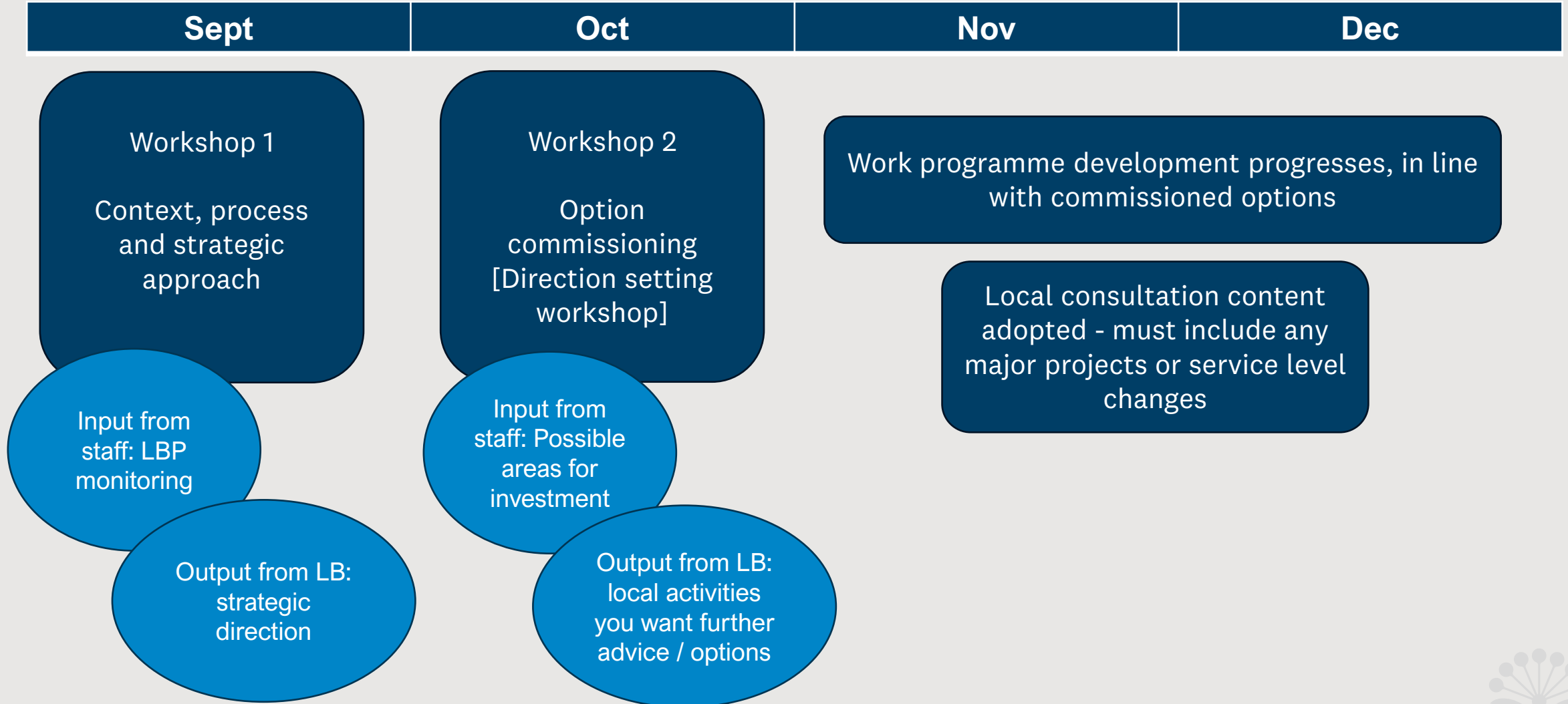


Different scenarios (based on additional opex budget)

A	B	C	D
\$0	A bit more (around \$1m)	A lot more (around \$2-4m)	A whole lot more (\$5m and \$8m)
<ul style="list-style-type: none"> Identify any cost increases – some boards may need to reduce spending in other areas Advice on whether budget reductions are required BAU approach to work programmes and considering doing things differently In the future we will talk to you about doing things differently programme 	<ul style="list-style-type: none"> Identify any cost increases – some boards may need to spend some additional budget to cover this BAU approach to work programmes and considering doing things differently Scale up current activities Consider a small amount of additional activity Some option advice required 	<ul style="list-style-type: none"> Identify any cost increases – some boards may need to spend some additional budget to cover this Scale up current activities Consider significant additional activity (making sure it is future proof) Significant option advice required 	<ul style="list-style-type: none"> Identify any cost increases – some boards may need to spend some additional budget to cover this Scale up current activities Consider significant additional activity (making sure it is future proof) Significant option advice required Significant wrap around advice required



Key workshops



Local Board Work Programme – Local Board Plan

- Local board plans are your strategic three-year plans which reflect community aspirations and priorities. They should guide the direction of the local board work programmes.
- 2025/2026 is the second year the local board work programmes are developed to deliver on the 2023 Local Board Plan
- **Are there particular areas of improvement in your Local Board Plan you would like to focus on this year?**



Work Programme progression

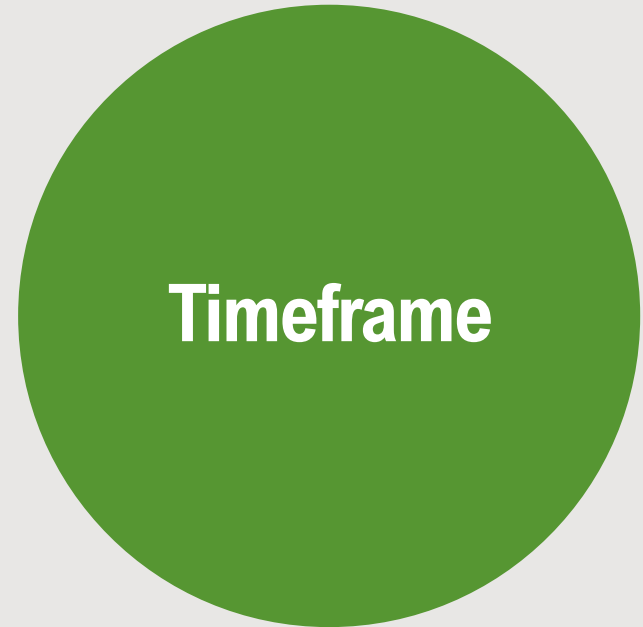
Today we are here



Prioritisation of
vision and goals



Defining capacity



Implementation



Key questions to consider when developing objectives:

**Who are your stakeholders?
And what are their needs?**

What is your scope of influence?

What is going well and what can be improved?

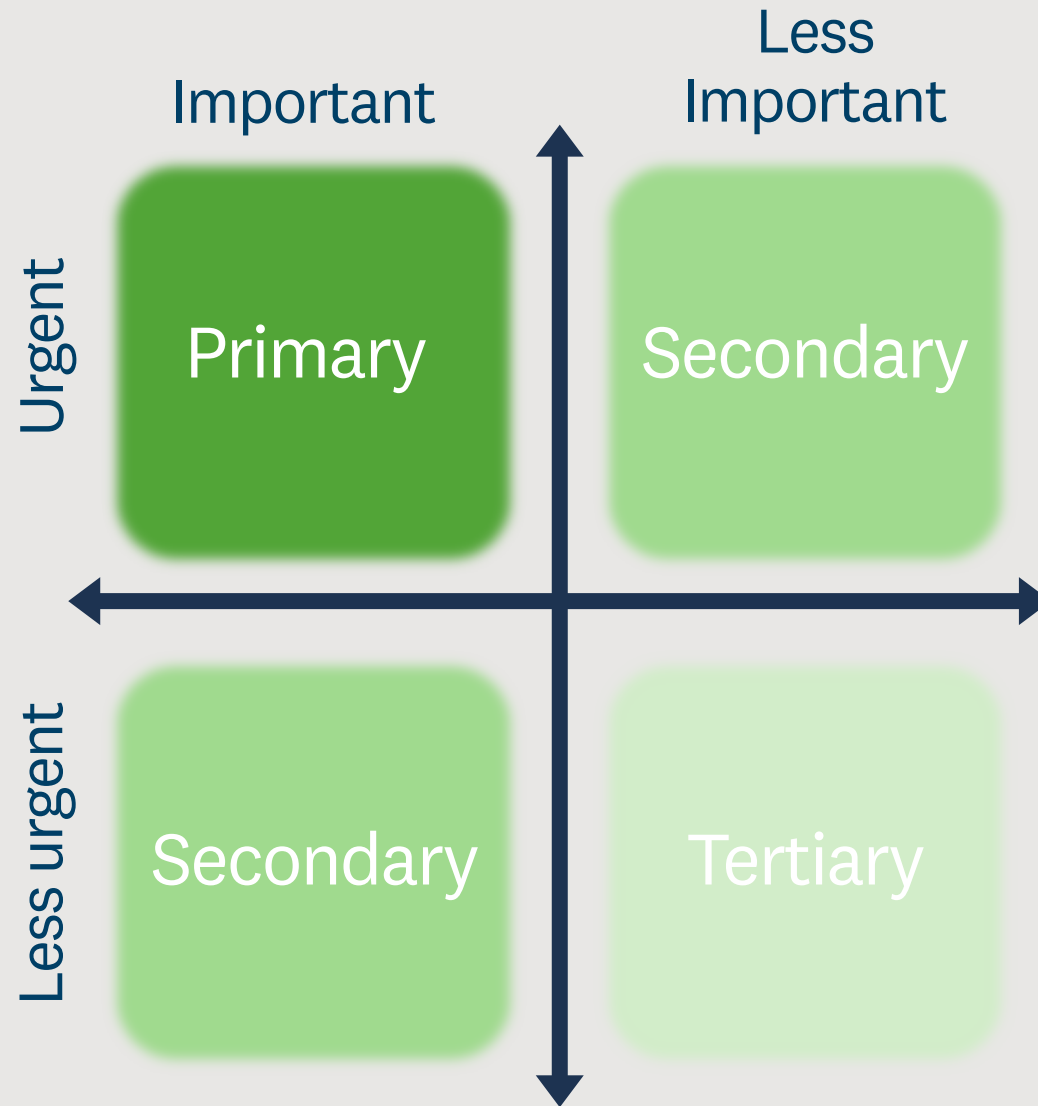
What or who is most at risk?

What does success look like to you?



Eisenhower Matrix

- Tool used to organise priorities
- Collaborative exercise to identify group direction
- Activity link TBC



Next steps

1. Local Board Annual Planning (LBAP) workshop 2 (October)
 - The local board share their strategic direction with delivery staff
 - Delivery staff present additional ideas for investment
 - The local board commissions staff to investigate and provide advice/options in the new year
2. Local board consultation content is drafted based on LBAP workshop 2 and workshopped at LBAP workshop 5
3. A recap of Annual Budget regional topics will be workshopped at LBAP workshop 3, and the Mayoral Proposal will be workshopped at LBAP workshop 4.

