

Waiheke Local Board Workshop Agenda

Date of Workshop: Wednesday 31 July 2024

Time: 11.30am

Location: Waiheke Local Board, 10 Belgium Street; MS Teams

Time	Workshop Item	Governance role	Purpose	Presenter(s)	Proposed Outcome(s)
11.30	Item 1 Climate Activator update Attachment Presentation – Waiheke Climate Activation	Keeping informed	Informal dissemination	Chelsee Neverman <i>Senior Low Carbon Specialist, Sustainability Initiatives</i> Greer Rasmussen <i>Biosecurity Adviser, Natural Environment Delivery</i> Kartik Bhat, <i>Relationship Advisor</i>	Members will be updated on the progress of programmes and initiatives towards Waiheke Climate Activation goals.
12:30	Lunch				
13:00	Item 2 Equestrian Services Assessment update Attachment Presentation to be added when available	Keeping informed	Informal dissemination	Jacqui Thompson-Fell <i>Parks & Places Specialist</i>	Members will be updated on the draft equestrian services assessment.

Time	Workshop Item		Governance role	Purpose	Presenter(s)	Proposed Outcome(s)
14:00	Item 3	High Pathogenicity Avian Influenza update Attachment Presentation – Mitigating the spread of HPAI through Tāmaki Makarau	Keeping informed	Informal dissemination	Rashi Parker <i>Birdcare Aotearoa</i> Carl Ashworth <i>Birdcare Aotearoa</i> Karen Saunders <i>Native Bird Rescue</i> Inga Muller	Members will be informed about the current global status of HPAI, and strategies to mitigate its spread in Aotearoa New Zealand.

Governance Role

1. Accountability to the public
2. Engagement
3. Input to regional decision-making
4. Keeping informed
5. Local initiative / preparing for specific decisions
6. Oversight and monitoring
7. Setting direction / priorities / budget

Role of Workshop:

- (a) Workshops do not have decision-making authority.
- (b) Workshops are used to canvass issues, prepare local board members for upcoming decisions and to enable discussion between elected members and staff.
- (c) Workshops are not open to the public as decisions will be made at a formal, public local board business meeting.
- (d) Members are respectfully reminded of their Code of Conduct obligations with respect to conflicts of interest and confidentiality.
- (e) Workshops for groups of local boards can be held giving local boards the chance to work together on common interests or topics



Waiheke Climate Activation

Waiheke Local Board Workshop June 2024



WRT
WAIHEKE RESOURCES TRUST

Waiheke Local Board
Auckland Council



Waiheke Climate Activation

To contribute to global, national, regional and local climate goals

Global goal - Paris Agreement

Ensuring temperature rise is below 1.5c

National goal - Zero Carbon Act 2019

Net zero by 2050

Regional goal - Te Tāruke-ā-Tāwhiri

Reduce greenhouse gas emission's by 50% by 2030 and net zero by 2050

Climate Change Iwi Leaders Group

Working with iwi and hapu around the country



Waiheke Local Boards goal

Carbon positive by 2040*

- completing a Waiheke Local Board Area Carbon Inventory Model by 2023 ✓
- achieving a 100% circular food economy with 100% of all food and green waste composted on-island by 2025
- eliminating the environmental and economic impacts of fossil fuel based transport by 2030
- halving carbon emissions by 2030 (from 2016 baseline)
- reducing the average carbon footprint per resident to 2.5 tonnes by 2030
- achieving carbon positivity by 2040

**Goes beyond achieving net-zero carbon emissions to create an environmental benefit by removing additional carbon dioxide from the atmosphere*

Climate Action - Content package

Ready to take an action?
FREE resources are available!

FutureFit.nz
Find your carbon footprint

LiveLightly.nz
Tips to take climate action

Flood Viewer
Keep your home safe!

WRT 

Take Climate Action
**Protect your home,
know your flood risk!**



WRT

Take Climate Action
Try plant-based kai



WRT

Ready to take an action?
FREE resources are available!

FutureFit.nz
Find your carbon footprint

LiveLightly.nz
Tips to take climate action

Vegan Society NZ
Recipes and support going plant-based

WRT 

Take Climate Action
The Waiheke Way



Waiheke Local Board
Kaitiaki Council

Waiheke Resources Trust & Sustainability Centre
a day ago


Could we be doing this on Waiheke? What a great idea! Check out this fascinating 18-minute documentary by [350.org](https://www.350.org)! It highlights the unsung heroes across Aotearoa who are quietly transforming their communities to enhance energy access and resilience, combat energy poverty, create jobs, support the community, and fight climate change.

Keep your eyes peeled for more information about what local climate action groups are up to on Waiheke to help activate our Local Waiheke C... See more

Envirohub Bay of Plenty
2 days ago

This month at Envirohub we are looking into ways we can consume energy more sustainably

This 18 minute documentary is a really interesting watch Produced by ... See more



they'll give us a kohā for a bike, bring it back!

YOUTUBE.COM
We Can Produce Our Own Power: Community Energy Projects in Aotearoa (Full Documentary)

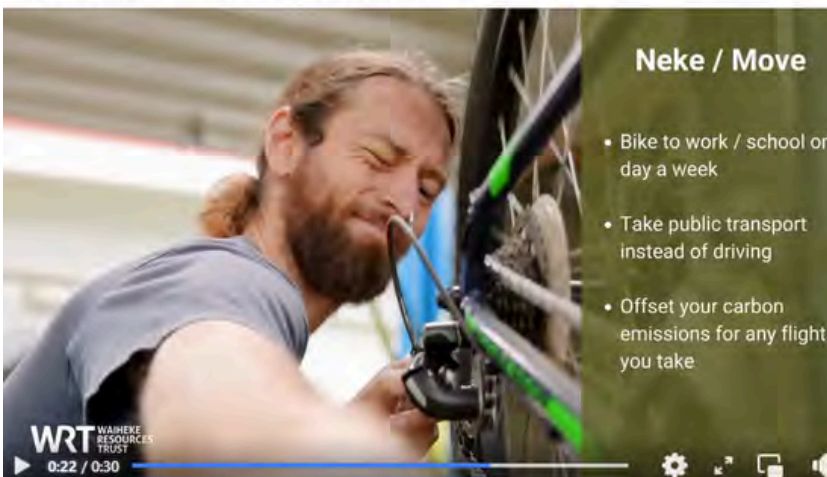
Waiheke Resources Trust & Sustainability Centre
April 10

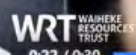
Let's take Climate Action together!

Measure your carbon footprint with Future Fit
Check out <https://www.futurefit.nz/> to see your carbon footprints (FREE!) Challenge friends through FutureFit for a bit of healthy competition Set goals together, motivate each other an... See more

Neke / Move

- Bike to work / school one day a week
- Take public transport instead of driving
- Offset your carbon emissions for any flights you take



WRT 



Our wonderful intern Abby introduces the Take The Jump movement and how she'll be making 7 key shifts in her life to reduce her carbon footprint. Stay tuned for our...



A PRECIOUS PLACE

Ngāti Paoa are recognised as the principal mana whenua tribe on Waiheke Island - Te Motu Arai Roa

Ngāti Paoa's genealogical links are to both ancestral waka of Rainui and Te Arawa. The Te Arawa waka landed at Rangihoua around the 1350s, where they relished their waka - Rangihoua meaning the day of renewal. On the Te Arawa waka they heard the water lapping on the rocks at Horuhoru - Gannet Rock which reminded them of their departure from Hawaiki and their lamenting gave rise to the names Tikapa Moana (Hauraki Gulf) and Horuhoru (heartfelt sobbing). At Karaka Bay in March and July 1840, 23 Ngāti Paoa tupuna signed Te Tiriti o Waitangi, most of them had ties to Waiheke Island.

We acknowledge those who have come before and all the mana whenua of this land.

To start learning about tikanga Maori and how to find out more about Waiheke's history, the Waiheke Adult Learning centre offers courses.

Te Wenowero - a sculpture by Chris Bayley sits at the wharf in Matiatia issuing the challenge to all who come to this island to help protect this special place, that is vulnerable to the impact of human habitation.

With this welcome pack we want to help you rise to the challenge and find yourself a home in this community in a way that helps preserve the island's character, minimises impact on and aims to restore its precious natural environment.

A RESILIENT COMMUNITY

Waiheke Island can be paradise but as an island community we are vulnerable to the impact of geography, climate and weather, the realities of the food and transport systems and economic ups and downs. To help weather the seasons and storms of whatever nature, we believe that a resilient community is connected and empowered. This welcome pack points you in the direction of the resources and organisations that can help with that.

Volunteer opportunities are marked in this welcome pack with this symbol.

Volunteering can help you get connected to your place and helps build a resilient community!

Useful places for new residents:

- Waiheke Library Oneroa - free internet and council services
- Citizens Advice Bureau 141 Ocean View Road, Oneroa
- Ostend Market - Ostend Hall, Belgium Street. Every Saturday 7:30am - 1pm
- Waiheke Adult Learning wal.org.nz
- Piritahi Marae - Tahatai Road, Oneroa.

Useful sources:

The Gulf News and the Weekender for local news, information and advertising. The Waiheke facebook pages and groups can be a goldmine too, a good question never goes unanswered!

Welcome to Waiheke Pack
A2 fold out pamphlet - Prototyping
Completed by end of July 2024.

WATER ON WAIHEKE

IF YOU RUN LOW...

- Order water from one of the local water delivery companies.
- Don't wait until your tank is empty, in a dry spell there can be a waiting list.
- Monitor your use and order when you have enough left for approximately 14 days.

There are digital and other monitoring devices available which will give you an indication of your water levels. You can book ahead and cancel if delivery is not needed. If you are on a government benefit or low income you may be entitled to financial assistance for water. Phone Work and Income NZ: 0800 559009

Most of Waiheke relies on rain water to fill water tanks for drinking and washing. There is no reticulated water supply. Summer can be dry. Here are some tips to help you avoid running out of water.

COLLECT
Rainwater is collected on the roof of most dwellings and held in a tank, then pumped to your tap. Maximise your rain catchment - the amount of roof surface that brings water to your downpipes - clean all gutters regularly and check for leaks and blockages. Find out the size of your water tank.

CONSERVE

- Keep showers short (2 minutes)
- Catch run-off in buckets for the garden
- Re-use 'grey water' from washing dishes to flush the toilet or water the garden
- Use the washing machine and dishwasher only for a full load and use shorter cycles
- Mulch your garden and water plants in the evenings to conserve moisture.
- Find out the flow rate of your taps and use flow restrictors where possible

Truck delivery charges start at around \$250 for a small load. Check providers' info for accurate pricing.

To learn how to measure water flow rate from your taps or join a workshop to learn about your water systems, visit wrt.org.nz

Reach out to water service providers for help with monitoring levels, testing quality, filtering and improving storage. Rain water should be safe for drinking if stored and filtered appropriately - no need to buy plastic bottles.

Most water is delivered by electric pump from your tank to the tap. It's a good idea to have some water stored for emergencies in case of power or pump failure.

SCAN THIS OR CODE FOR AN UP-TO-DATE LIST OF WATER DELIVERY COMPANIES AND OTHER SERVICE PROVIDERS

CARE FOR YOUR WASTE WATER SYSTEM

Somewhere on your Waiheke property you have a sewage treatment system - a septic tank on a newer treatment system and a drainage field. This is used to dispose and treat your waste water, including toilet waste and whatever you wash down the drain. If it is not operating effectively it can cause untreated wastewater to overflow on your property and also to get into the waterways and the bays we like to swim in.

REDUCE WATER USE
Reducing the amounts of water entering your system is important to avoid solids being flushed into your drainage field which can create toxic health hazards.

USE ECO-SAFE CLEANING PRODUCTS
Not all products sold in Waiheke supermarkets are safe for your treatment system. Waste water treatment systems rely on bacterial action to help clean the water - bleach, antibacterial and disinfectant cleaners can kill these beneficial micro-organisms. Properties on Waiheke that harvest rainwater have 'soft' water, not mineral rich 'hard' water that most household cleaning products are designed for. The good news is that you'll need less cleaning product for the same results and your appliances don't need de-calcifying. Prevent anything other than human waste going down the toilet, so no tampons or condoms.

If you have a bokashi composting system the liquid is good to tip down your toilet once a week, this helps waste break down faster & reduces odours.

Waiheke Waterways Project, with the support of the Waiheke Local Board and Greenacres Waiheke offers \$50 subsidy for septic tank checks.

During the check service providers assess system health and troubleshoot. They will write a report and put the owner in contact with repairers if there is a problem. They will give tips for system management and maintenance. Max. 1hr on site. Limited amount available island wide, book by emailing: info@wrt.org.nz

IT'S A LIVING SYSTEM AND SENSITIVE TO WHAT YOU PUT IN

On Waiheke it is important to look after your wastewater system. Not only to avoid costly repairs, also to avoid health hazards and protect local waterways and the sea from pollution. A property owner has a legal obligation to maintain the waste water system so it functions correctly and waste is processed effectively.

KNOW YOUR OBLIGATIONS

Older 'primary' systems must be inspected and pumped out no less than every three years.

Newer secondary/tertiary systems must be maintained every 6 months. Records of maintenance must be kept and made available for inspection by council or their agents.

Grant Writing

Auckland Council Climate Grant

WRT and Carbon Neutral Waiheke

To support the Waiheke base line data collection for the Local Board Climate Action Plan monitoring framework

Auckland Council Climate Grant

Kai for Community Festival

Tanya Batt

Sargood Bequest

Regrow program - Soil to Fork schools program

Woolworth food rescue fund

Successful application to support food rescue on Waiheke

Community and Volunteering Capability Fund

to support WRT internship program.

Advising

Wish Trust - Compost upscaling

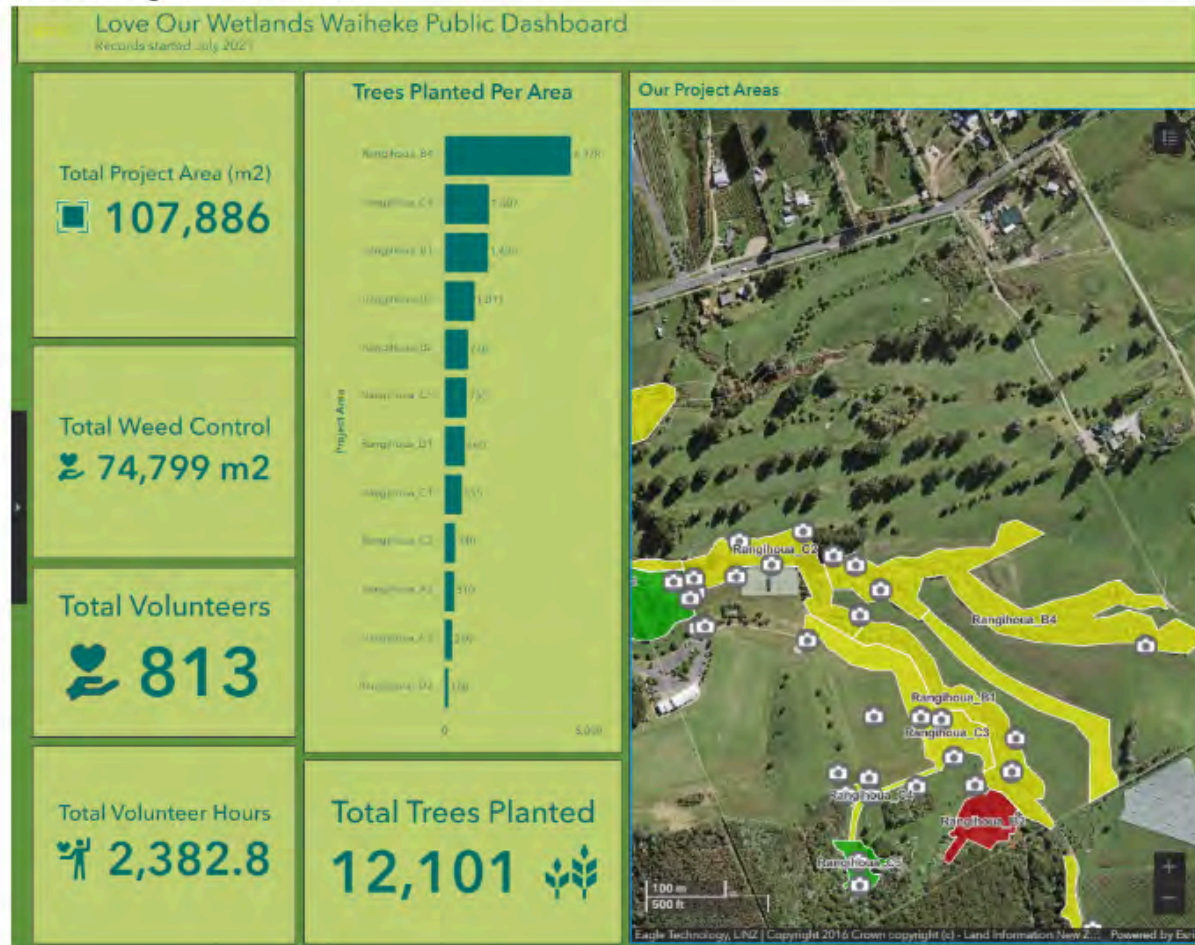
Submissions

Ongoing relationship building with WITI. Attending monthly and networking meetings.

WITI

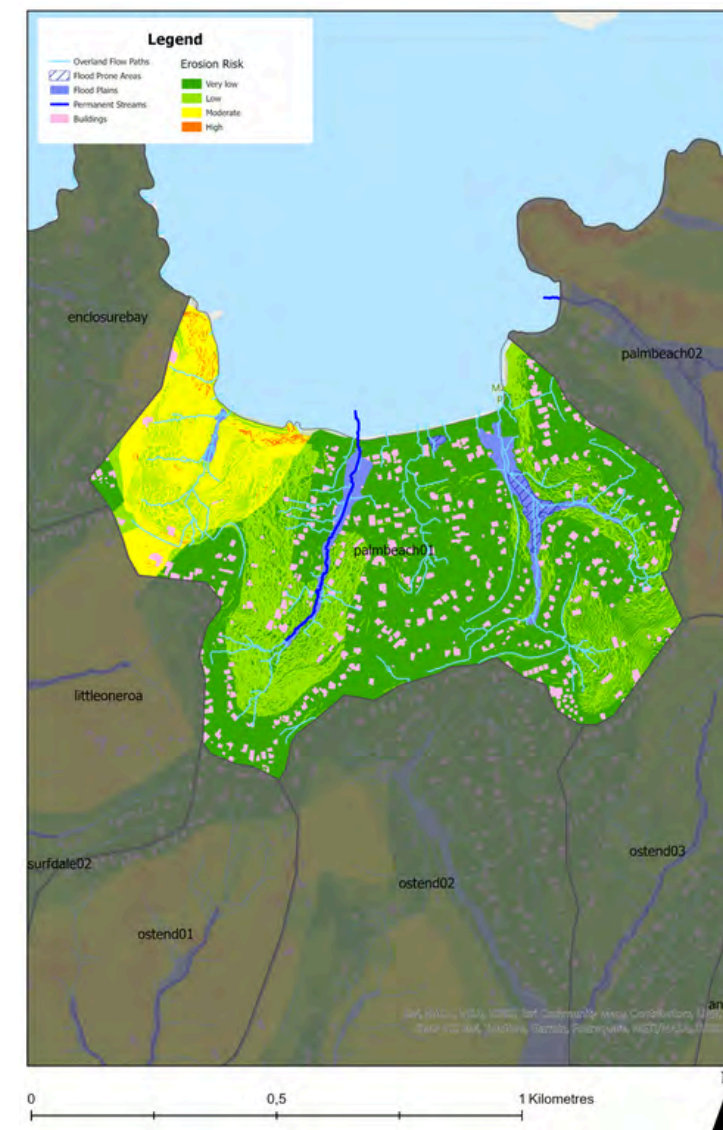
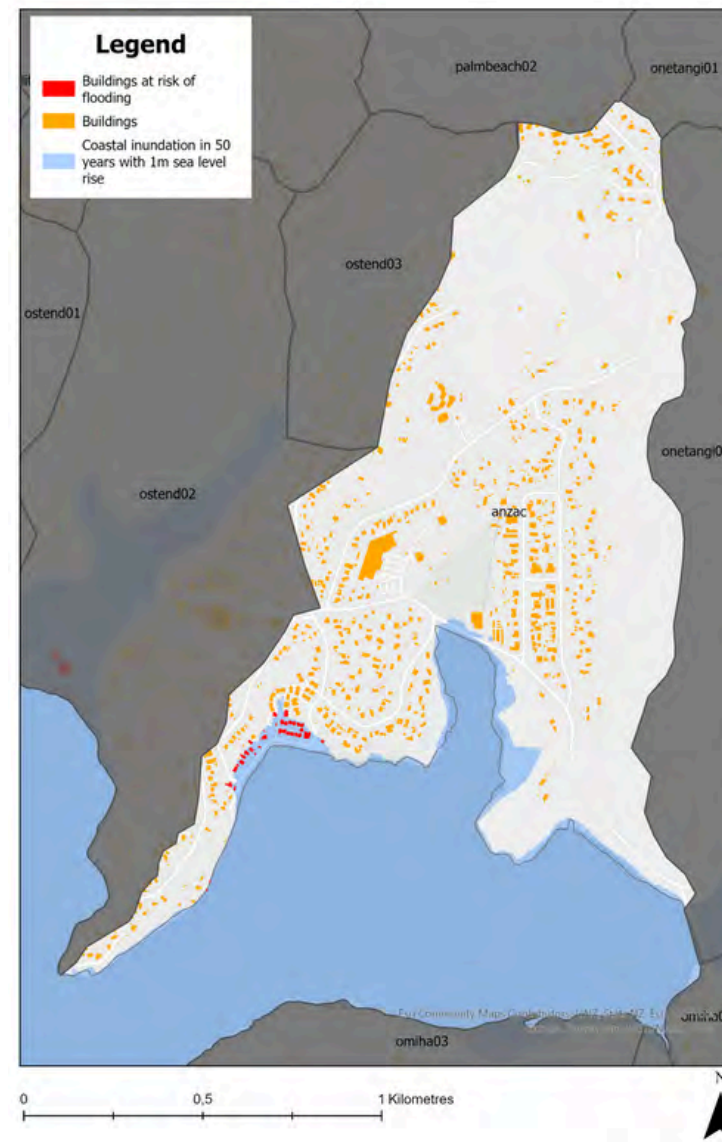
Ongoing relationship building with WITI. Attending monthly and networking meetings.

LOWW regeneration work:



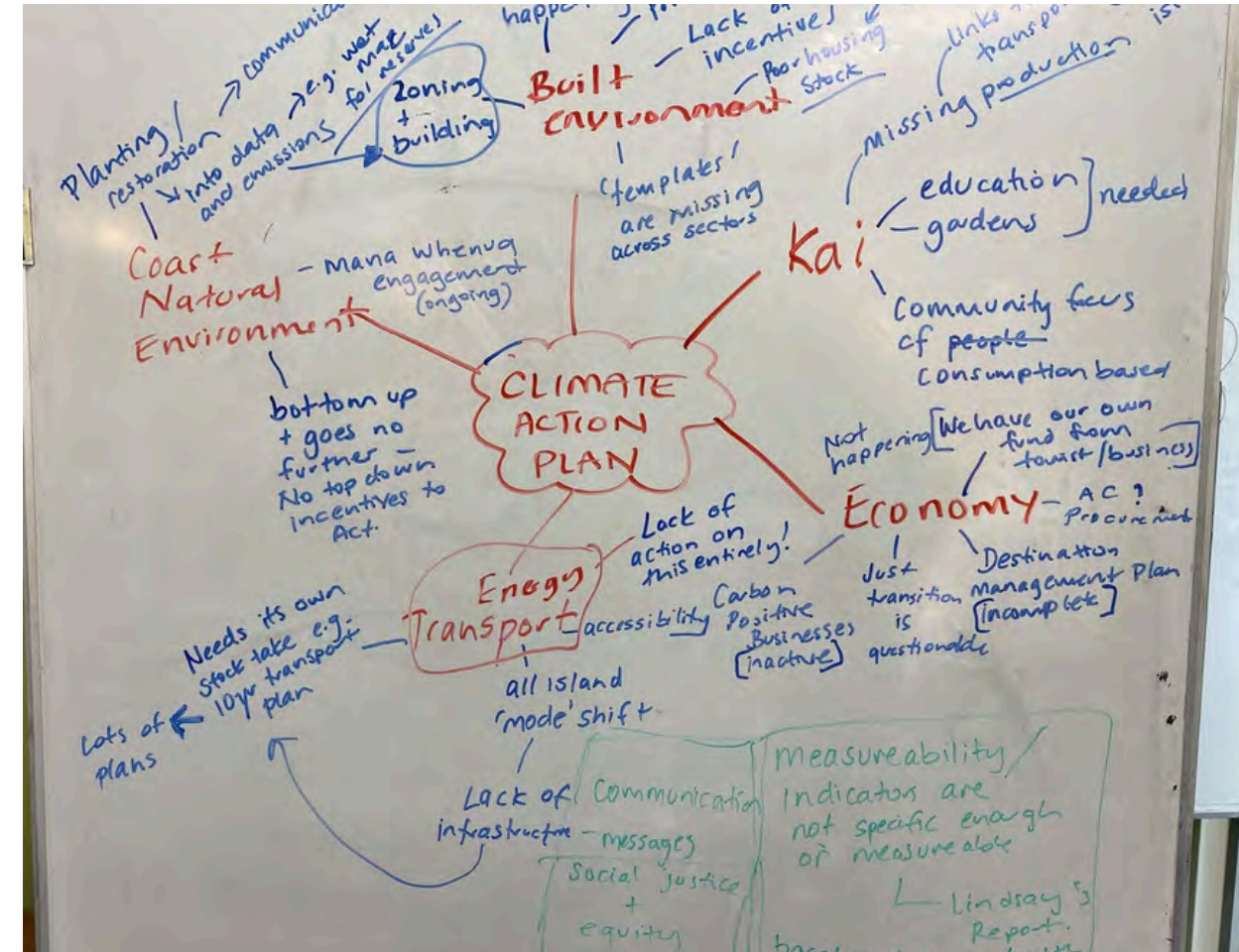
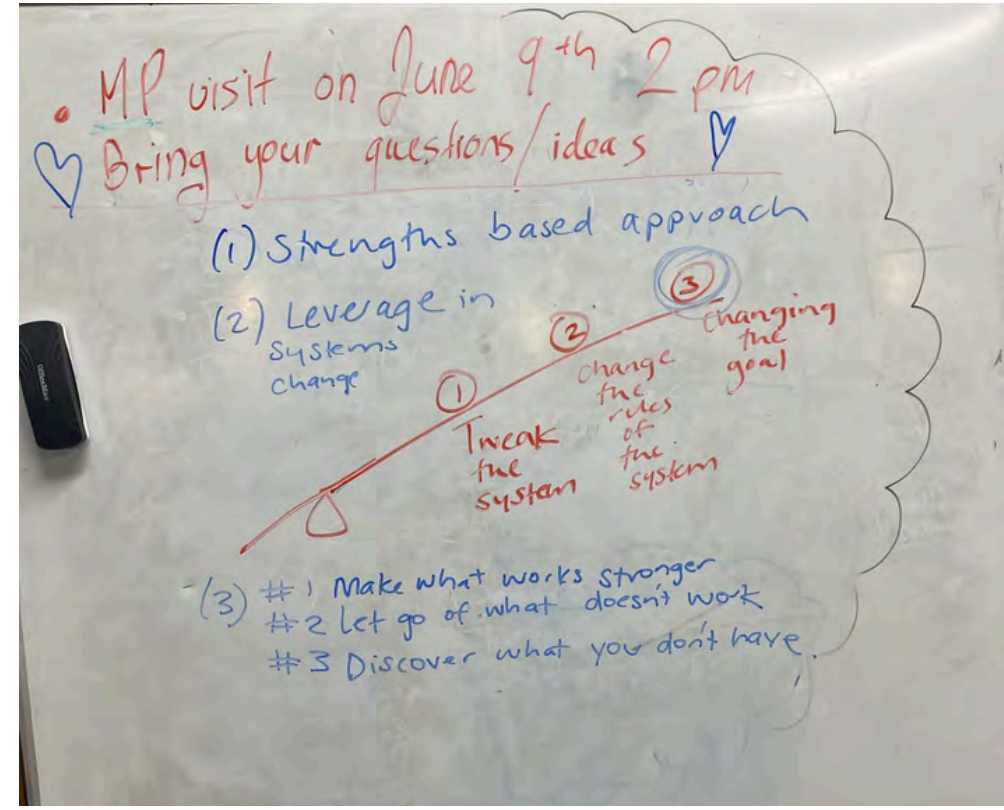
GIS for data capture and communications

Community Group work:



	Ostend0 1		Ostend0 2		Ostend0 3		Anzac	
Water temperature	15.0	Good	15.9	Good	16.0	Good	16.2	Good
Water clarity	61 cm	Good	21 cm	Of concern	33 cm	Fair	30	Fair
pH	7.0	Excellent	8.0	Excellent	7.0	Excellent	7.0	Excellent
Dissolved oxygen	4.5	Fair	6.0	Fair	5.0	fair	8.0	Good
Nitrate	0.0 mg/L	Excellent	0.0 mg/L	Excellent	0.7 mg/L	Good	0.8 mg/L	Good
Phosphorous	0.2 mg/L	Fair	0.025 mg/L	Good	0.15 mg/L	Fair	0.15 mg/L	Fair
Ammonia	0.0 mg/L	—	0.0 mg/L	—	0.12 mg/L	—	0.25 mg/L	—





Climate Hui 2024

2025 Opportunities

CAP Theme	CAP Goal	CAP Action	WRT Workplan	WRT Objectives	WRT Deliverables
All themes	All Goals	All actions	Project delivery and Community hui (Community Engagement)	Identify and connect people to specific bodies of work as outlined in the Local Plan and make progress visible. Organise and deliver annual hui with Climate Activator groups.	Build capacity with at least 4 stakeholder groups to support projects aligned with outcomes of CAP, gathering of milestones or achievements to celebrate. Delivery of one in person hui with key stakeholder groups.
Economy/Energy/Built Environment	Carbon Positive Economy/Just Transition	Support development and implementation of a Carbon Positive Business Programme which will drive investment into carbon positive development and employment within Waiheke Local Board area, in partnership with Auckland Council, Waiheke Connect, Waiheke Sustainability Centre, Tourism Waiheke, Auckland Unlimited, Auckland Transport, Carbon Neutral Waiheke, EECA, Amotai and carbon certification bodies. Identify local businesses and events that may be adversely impacted by the transition to a carbon positive economy. Create a group of local construction industry members (Architects, Builders, Suppliers, Waste providers) to champion and advocate more sustainable practices through design and building phases working within current building codes and recognised sustainable building certifications. Group to advocate to council on consenting issues and positive changes. Pioneer a Waiheke version of "How We Build"	Grant writing Support for WRT	Seek additional climate related funding sources applied to the benefit of Waiheke Island.	Three to five climate related grants completed. (WRT or partner organisations) At least one of those to be over \$25K
Economy/Natural Environment	Waiheke Climate Fund/ Offset Residual Emissions/ Carbon Positive Economy	Establish a Waiheke Climate Fund to offset unavoidable carbon emissions from the Waiheke Local Board Area and reinvest money raised directly into local carbon mitigation and resilience actions, including creation of simple mechanisms to enable voluntary participation by local businesses and visitors. Maximise the use of the Waiheke Climate Fund and ETS carbon credits, and other available funding sources to support local nurseries and accelerate planting. Ensure that the Waiheke Destination Management Plan aligns with the carbon positive goals and actions contained within this action plan, including support for the Waiheke Climate Fund	Waiheke Climate Fund	Support the establishment of a Waiheke Climate Fund	Research approaches to a "Waiheke Climate Fund" and provide a report on recommendations, process and timelines.
All themes	All Goals	All Actions	Catalyst for Change (Comms)	Building upon environmental behaviour change to visualise Waiheke based data to promote and track emissions reduction progress	Annual Communication of Emissions progress - e.g. Annual Emissions feature in local publications - updated status of emissions, celebrating success, priorities for residents to help etc Explore innovative tools to communicate behaviour tracking
Community and Coast	Community and Coast	Increase our communities' understanding of climate change, its impacts and risks and help them take practical action (pg 48). Create opportunities for the community to learn about climate change and their carbon footprints (pg 49). Better understanding of current and future impacts of extreme weather events and climate change. Reduce number of homes and businesses across Waiheke and Rakino that are exposed to flood risk (pg 48).	Climate action communications (Comms)	General budget to cover advertising costs as they arise to communicate Waiheke's emissions reduction progress and practical climate action in conjunction with WRT's Catalyst for Change in this workplan.	Communications plan for a highly targeted outcomes driven campaign. Advertising created and booked in alignment with communications plan.

Mitigating the spread of Highly Pathogenic Avian Influenza H5N1 through Tāmaki Makaurau

Dr. Rashi Parker (PhD)

Bird Care Aotearoa Charity Reg. CC37288



Aotearoa's leading wild bird hospital and rehabilitation centre



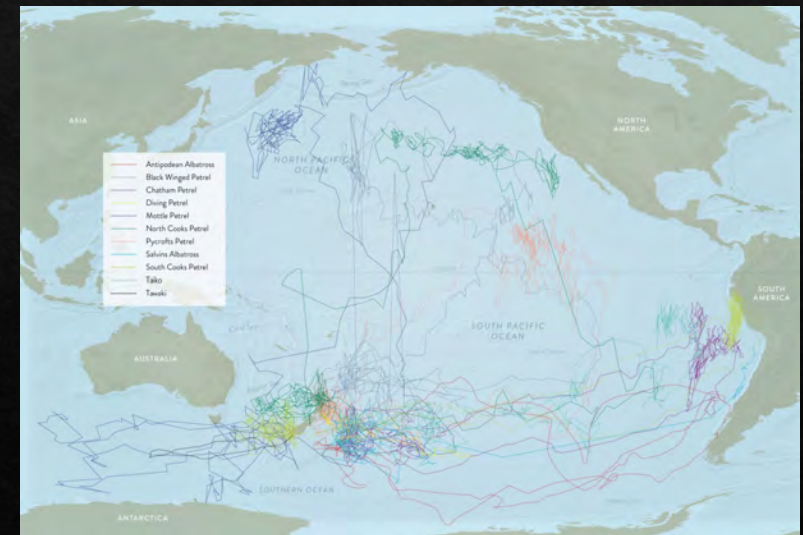
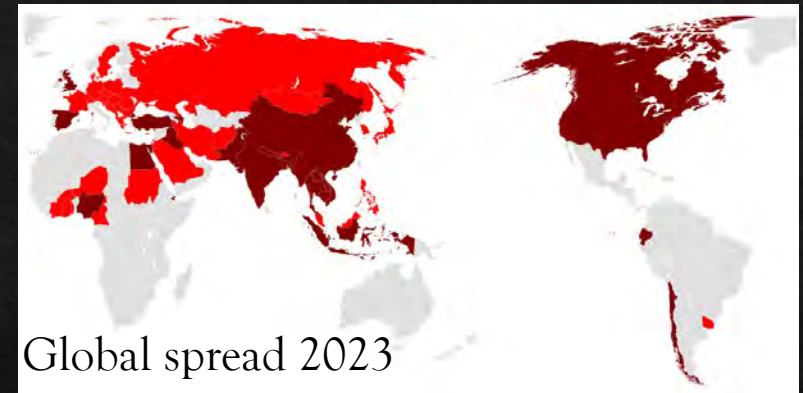
Korora Penguin



Tītī Cook's Petrel

- 6000+ annual admissions, rescued by the public, Dept of Conservation, councils or wild life agencies.
- Dept of Conservation permit and referrals for endemic and native species.
- Provide species-specific care, and regularly attend to **sick or injured sea birds- frontline response.**
- Funded by generous donations and contestable grants.

Highly Pathogenic Avian Influenza, H5N1 - an imminent risk to Aotearoa



<https://www.nzgeo.com/stories/where-the-seabirds-go/>
Global Location Sensor (GLS) tags

BCA needs support for our *front-line* role in mitigating the spread of H5N1



01



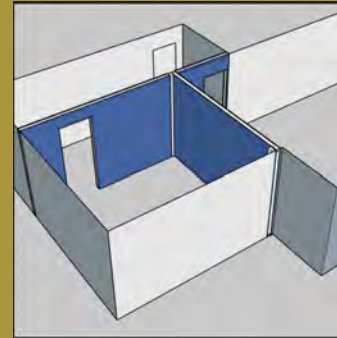
BROAD-SPECTRUM
MICROBIAL
DISINFECTANTS ~\$40,000:

*F-10. 1L ORDER, \$178.70,
EVERY 75 DAYS

*STERIGENE-GREEN

20L ORDER, \$1070, EVERY 14
DAYS.

02



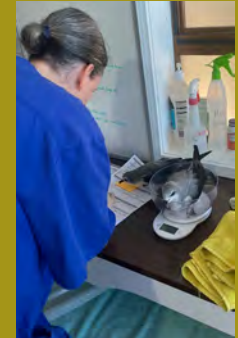
ISOLATION/
CONTAINMENT

*DEDICATED QUARANTINE
FACILITY & STAFF \$90,000

*ISOLATED DUCKERY
\$12000

*ERECT NON-PERMEABLE
WALLS IN GENERAL
WARDS, \$8277

03



SURVEILLANCE/
SCREENING

*DEDICATED AVIAN
SPECIALIST VET NURSE,
\$90,000 TO COLLECT
BIOLOGICAL SAMPLES.

>LOCATIONS OF INTEREST

Birdcareaotearoa.org.nz
support@birdcareaotearoa.org.nz



For our city, full of bird-lovers, we need to be prepared

