

# Waitākere Ranges Local Board Workshop Record

---

Workshop record of the Waitākere Ranges Local Board held at the Waitākere Ranges Local Board office, 39 Glenmall Place, Glen Eden, Auckland on Thursday 16 May 2024, commencing at 10.15am.

---

## PRESENT

**Chairperson:** Greg Presland  
**Members:** Michelle Clayton  
Mark Allen  
Linda Potauaine  
Liz Manley  
Sandra Coney

## Apologies:

**Also present:** Adam Milina, Brett Lane, Natasha Yapp, Nataly Anchicoque and Rebecca Winham

Workshop Item	Summary of Discussions
Parks and Community Facilities monthly update Greer Clark, Manager Area Operations Helen Biffin, Work Programme Lead Brad Congdon, Parks and Places Specialist 10.15am – 10.45am	Parks and Community Facilities staff provided the Board with an update on the current work being carried out in the Waitākere Ranges local board area.
Local Board Annual Planning Workshop 9 - Local Board Work Programmes Brett Lane, Senior Local Board Advisor David Rose, Lead Financial Advisor Waitākere Ranges Local Board Integration team 10.45am – 3.40pm	Staff guided the discussion to finalise local board work programs before approval in July 2024. Additionally, staff led the presentation of targets for performance measures to the Board for discussion and feedback.

The workshop concluded at 3.40pm.



# WAITĀKERE RANGES

## Local Board Report – MONTH YEAR

**MAKING  
GREAT PLACES  
AUCKLANDERS LOVE**  
PARKS & COMMUNITY FACILITIES



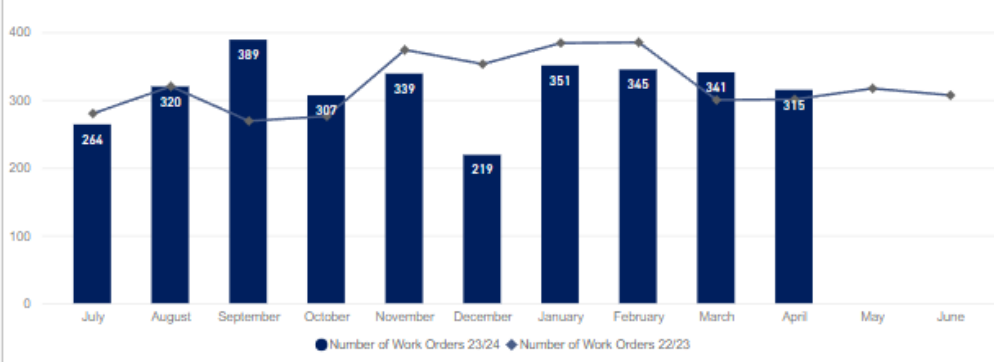
# PERFORMANCE REPORTING

## Audit Results and Request for Service

### Request for Service Received

Total raised for FY23/24 YTD **3190**

Waitākere Ranges RFS Breakdown



\*Only includes RFS that have resulted in a Work Order for action.

Breakdown of Top 5 Request for Service for April

Service Name	#Received
Carpentry Maintenance Service	32
Electrical Maintenance Service	29
Locking/Unlocking Parks Gates & Toilets	7
Plumbing Maintenance Service	33
Structure Maintenance and Repairs	19
Tree Maintenance - General	38

Breakdown of Top 5 Request for Service FY23/24 YTD

Service Name	#Received
Carpentry Maintenance Service	224
Loose Litter Collection	249
Plumbing Maintenance Service	308
Structure Maintenance and Repairs	360
Tree Maintenance - General	333

### COMMENTARY

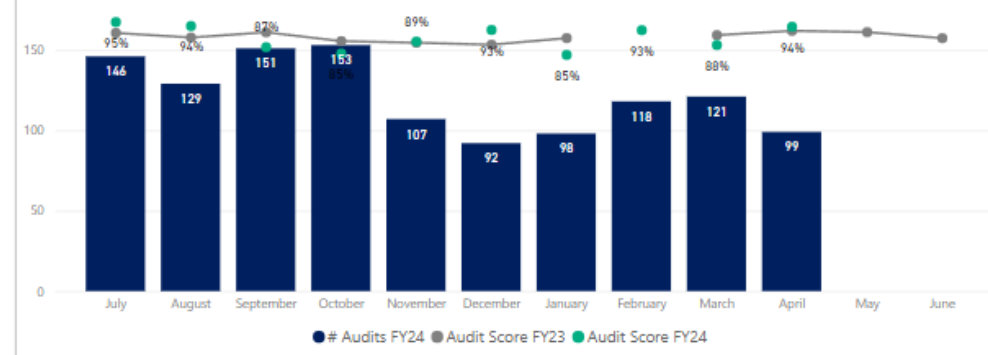
April 2024 showed a total of 315 requests for service raised, a small increase from the previous year.

Plumbing maintenance is one of the top requests with 33 requests received, with carpentry maintenance closely behind with 32 requests received.

Tree maintenance is sitting the highest at 38 requests received. This could be a result of the continuous work being done to ensure trees are in good condition 12 months after two major weather events.

### Audit Results

Waitākere Ranges Full Facilities Audits



The highlights and lowlights of audits undertaken FY23/24 YTD are:

#### Highlights YTD

- Toilet
- Sportsfields
- Response WO
- Litter
- Building Cleaning

#### Lowlights YTD

- Furniture, Playgrounds & Recreational Equipment
- Gardens & Plants
- Hard Surfaces & Paths
- Tracks (incl. Structures)
- Water Feature

### COMMENTARY

In April 2024, 99 audits were conducted throughout the Waitakere Local Board area, giving a result of 94% which is very similar result as April 2023.

Response work orders are one of the three highlights, along with litter and building cleaning.

Furniture, Playgrounds and Recreational Equipment, gardens and plants, hard surfaces and paths are the low lights for the month of April. We are working closely with the contractors and have the confidence these areas will improve in the near future.



# MAINTENANCE DELIVERY UPDATE

Corrective, preventive, risk-based and condition-based maintenance

MAKING  
GREAT PLACES  
AUCKLANDERS LOVE  
PARKS & COMMUNITY FACILITIES

## Kaurilands Domain – Road Line Marking Renewal





# MAINTENANCE DELIVERY UPDATE

Corrective, preventive, risk-based and condition-based maintenance

MAKING  
GREAT PLACES  
AUCKLANDERS LOVE  
PARKS & COMMUNITY FACILITIES

## Wood Bay Reserve Furniture Revitalisation – Before and After



# MAINTENANCE DELIVERY UPDATE

Corrective, preventive, risk-based and condition-based maintenance

MAKING  
GREAT PLACES  
AUCKLANDERS LOVE  
PARKS & COMMUNITY FACILITIES

## Armour Bay Water Leak – Before and After



A water leak had been detected in front of the toilet block, which had been leaking for some time. The arrows in the photo indicate where the water pipes were running, and the leak was found. Our Full Facilities Contractors cut in a shut off valve and tidied the piping up.

# ARBORICULTURE UPDATE

The cultivation of trees and shrubs

## Scheduled and Notable Work

### Street Pruning

Titirangi

### Park Pruning

Waikumete Cemetery

### Planting Scoping

Planting scoping is mostly complete. This has gone much quicker this year.

### Noteworthy Work

Large Poplar removal – Along Warner Park Ave Treescape investigated a leaning poplar. Concern was highlighted and TS quickly mobilised machinery from different departments to make it safe.

## Henderson Valley Green

An RFS was raised for various items within this park which Treescape attended and cleaned up.

For this the crew did some remedial work on the larger more prominent liquidambar and did a good amount of pruning nearby to enhance the location.

With the weather turning a somewhat colder lately, this brings with it the fantastic autumn colours that the exotic trees bring to our common spaces.





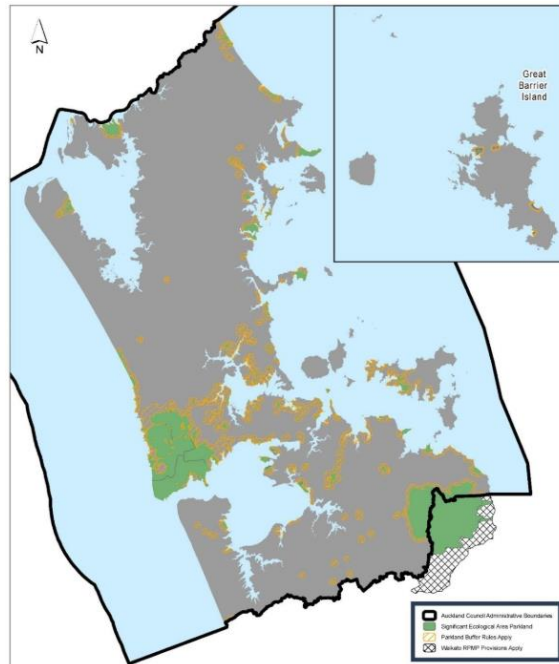
# ECOLOGICAL UPDATE

## Plants, animals and their environment

### Compliance with 'buffer rules' along road corridors in the Waitakere Ranges Heritage Area Act zone

Careful control of target pest plants to comply with rules in 7.5 of the operative Regional Pest Management Plan continues. (Map from page 185, below.)

Various levels of traffic management is required for most sites. (Traffic management just out of sight in photo to right.) This is a new programme and lower risk sites have been targeted first. Further work on ropes access areas (e.g., road cuttings) is upcoming.







# PROJECT DELIVERY– Completed projects

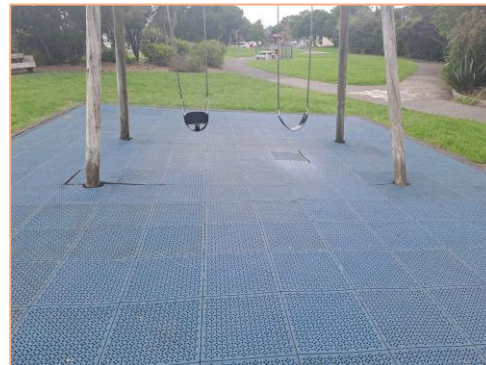
## Swanson Station Park - renew play equipment and play surface

The concrete surround edging was removed from the flying fox this was completed to make the fall zone compliant. The swing and playground structure areas, the playmatta was renewed, with a vibrant blue.

Before



After





# PROJECT DELIVERY– Completed projects

## Waitākere Ranges – refurbish building roofs

Glen Eden Recreation and Community Centre roof works have now been completed. New guttering and apex flashing have been installed.

Works have now commenced on Glen Eden Community House and will be completed in May.



Before



# PROJECT DELIVERY– Completed projects

## Titirangi War Memorial Hall – gate installation

A new Heavy-duty gate has been installed to the entrance of Titirangi War Memorial Hall.

Locking and unlocking of the gate will begin at the end of May.



# PROJECT DELIVERY UPDATE

Assets being built, renewed or maintained

## Parrs Park – Artificial Sportsfield Renewal

The installation of the new shockpad and turf system is now well underway. Physical Works are on track to be completed late May.





# PROJECT DELIVERY UPDATE

Assets being built, renewed or maintained

## Piha Domain – Eel Bridge refurbishment

This Project continues to track well. The first set balustrades have been installed and is looking amazing. Works are scheduled for completion in the first mid-July.





# PROJECT DELIVERY UPDATE

Assets being built, renewed or maintained

## Singer Park – Carpark Renewal

The physical works for the resurfacing of the carpark at Singer Park are now underway. Physical works are programmed for completion late May.





# NOTIFICATIONS

## Community leasing and land-owner approvals

### Community Leasing

Community lease movements

There are no community lease movements to report for April 2024.

### Land Advisory

Land-owner applications received are assessed by Land Use Advisory and reviewed by Community Facilities staff. The board will be contacted for feedback in due course.

No new applications for landowner approval were **received** and allocation for staff review during April 2024.

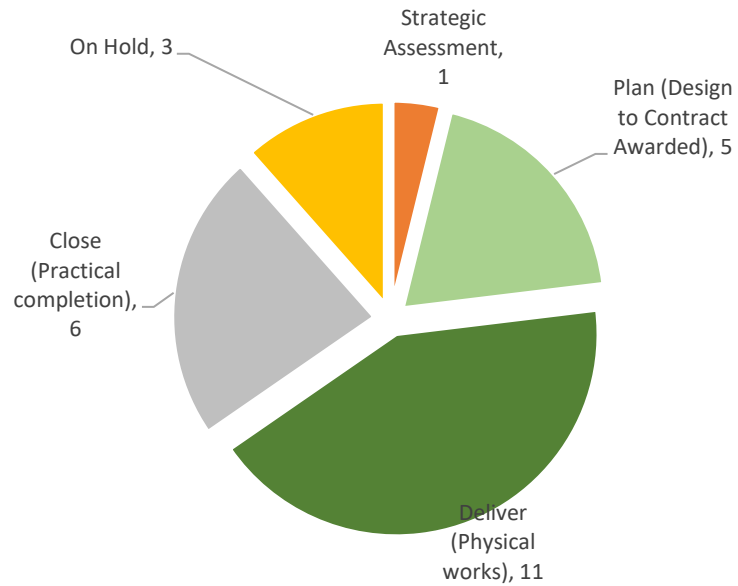
No applications for landowner approval were **approved** during April 2024.

# NOTIFICATIONS PROJECT DELIVERY STATUS

## Project Delivery

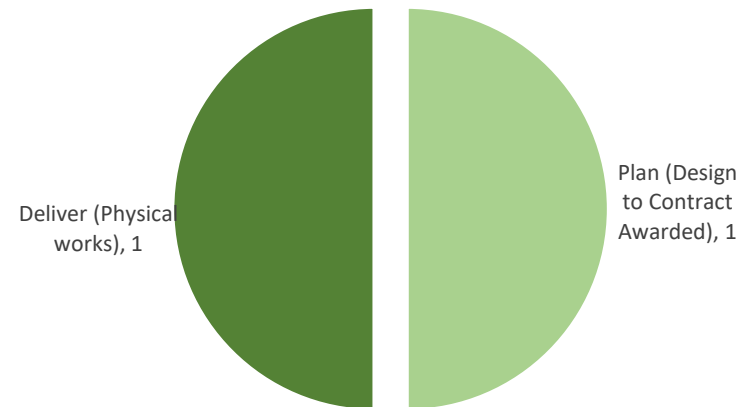
Annual work programme Local Board - Project Status

Total Number of Projects - 26



Annual work programme Local Board - Project Status

Total Number of LDI Projects - 2







# PROJECT DELIVERY

## Status and summary updates

			Initiate	Preliminary design	Detailed Design	Tender Process	Construction	Defects
			2023/2024 - Current year					
Activity Name	RAG	Local Board Commentary	Timeline	Q1	Q2	Q3	Q4	
French Bay Esplanade - renew yacht club/boat ramp driveway	Amber - At Risk	Current status: Design complete and tender package complete. Next steps: Project on hold due to slip on site.	Baseline					
			Forecast/Actual					
Glen Eden Town Centre - replace water feature electrical box	Green - On Track	Current status: Library Lane water feature: rebuild electrical components that have failed. Pricing accepted and contract currently being procured. Next steps: Contractors to complete this work in late May, early June 2024.	Baseline					
			Forecast/Actual					
Kaupeka / Virgo Common - renew playground	Green - On Track	Current status: Physical works contract awarded. Next steps: Commence physical works.	Baseline					
			Forecast/Actual					
Koroī / Clayburn Reserve - develop neighbourhood park	Green - On Track	Current status: Consultation with community and iwi underway. Next steps: Commence concept design.	Baseline					
			Forecast/Actual					
Les Waygood Campground - develop new campground	Green - On Track	Current status: Physical works complete. Next steps: Complete compliance items for resource consent and close out project.	Baseline					
			Forecast/Actual					
Minor Capital works - Waitakere Ranges	Green - On Track	Current status: This project is a placeholder for urgent replacement and renewal of minor assets across community facilities in the Waitakere Ranges local board area. Next steps: Liaise with Facility Managers for any works to be completed.	Baseline					
			Forecast/Actual					
Parrs Park - refurbish skate park surface	Green - On Track	Project completed March 2024.	Baseline					
			Forecast/Actual					
Parrs Park - renew artificial sports field surface	Green - On Track	Current status: Shockpad and new turf system installation Next steps: Sand and infill installation	Baseline					
			Forecast/Actual					
Penihana Park - develop new neighbourhood park	Green - On Track	Project completed December 2023.	Baseline					
			Forecast/Actual					
Piha Domain - refurbish eel bridge balustrade	Green - On Track	Current status: Physical works have commence and will take approximately 15-18weeks. 10 at a time bridge panels are removed from site, all work is completed inside a factory, then returned to site for install. Next steps: Complete physical works and close out project.	Baseline					
			Forecast/Actual					
Singer Park - upgrade sports lighting, sports field and carpark	Green - On Track	Current status: Physical works underway Next steps: Construction monitoring	Baseline					
			Forecast/Actual					
Swanson Station Park - renew play items and safety surface	Green - On Track	Project completed April 2024.	Baseline					
			Forecast/Actual					



# PROJECT DELIVERY

## Status and summary updates

			Initiate	Preliminary design	Detailed Design	Tender Process	Construction	Defects
			2023/2024 - Current year					
Activity Name	RAG	Local Board Commentary	Timeline	Q1	Q2	Q3	Q4	
Te Kakau - develop cultural park features	Amber - At Risk	Project is on hold awaiting funding availability.	Baseline					
			Forecast/Actual					
Titirangi War Memorial Hall & Library - refurbish exterior of building	Green - On Track	Current status: Detailed seismic assessment complete Next steps: Apply for resource consent	Baseline					
			Forecast/Actual					
Waitarua Hall - replace exterior fire exit stairs	Green - On Track	Current status: Removal of stairs to commence mid April. Next steps: Close out project.	Baseline					
			Forecast/Actual					
Waitākere Ranges - remediate storm damaged assets	Green - On Track	Current Status: Physical works contract awarded for the remediation of tracks damaged during the storm events. Next Steps: Commence physical works.	Baseline					
			Forecast/Actual					
Waitākere Ranges - renew community facility and park signage	Green - On Track	Project completed March 2024.	Baseline					
			Forecast/Actual					
Waitākere Ranges - renew park driveways and carparks	Amber - At Risk	Current status: Awaiting scoping documentation. Next steps: Review documentation and begin project planning.	Baseline					
			Forecast/Actual					
Waitākere Ranges - renew park fixtures and furniture FY23-FY24	Green - On Track	Current status: Physical works have commenced. Installation of gate for Titirangi War Memorial Hall & Library. Install fencing around garden for Titirangi War Memorial Hall & Library. Ceramco Park long jump covers are being installed. Next steps: Complete physical works by mid May.	Baseline					
			Forecast/Actual					
Waitākere Ranges - renew park walkways & paths FY22-FY24	Green - On Track	Current status: First stage of physical works are now completed. Next steps: Undertake physical works at Anniston Green and Laingholm Scenic Reserve in future years.	Baseline					
			Forecast/Actual					
Waitākere Ranges – renew park/facility security systems & lighting FY23-FY24	Green - On Track	Project completed - February 2024	Baseline					
			Forecast/Actual					
Waitākere Ranges - renew/refurbish building roofs & associated assets	Green - On Track	Current status: Works to begin mid March 2024. Next steps: Complete works at Glen Eden Rec Centre, Glen Eden Community House & Titirangi Playcentre, all work to be completed mid May.	Baseline					
			Forecast/Actual					
Waitākere Ranges - replace sports light systems	Green - On Track	Project complete Feb 2024.	Baseline					
			Forecast/Actual					



# PROJECT DELIVERY

## Status and summary updates

			Initiate	Preliminary design	Detailed Design	Tender Process	Construction	Defects
			2023/2024 - Current year					
Activity Name	RAG	Local Board Commentary	Timeline	Q1	Q2	Q3	Q4	
Waitākere Ranges Greenways Plan - investigate and construct Route G8 c/d	Amber - At Risk	Current status: Workshop with the local board completed in October. However, Local Board decided to relook the options again and shall change the status of the project to Hold until further notice Next steps: Receive formal approval from the local board on the preferred option and proceed with Detailed Design	Baseline	[Gantt chart showing project progress: blue bar from Q1 to Q2, orange bar from Q2 to Q3, and a dashed line extending to Q4]				
			Forecast/Actual					
Waitakere Ranges Greenways Plan - investigate G2 priority route Korōi / Clayburn Res to Rangeview Rd	Green - On Track	Current status: No funding available for this project this financial year	Baseline	[Gantt chart showing project progress: blue bar from Q1 to Q2, orange bar from Q2 to Q3, and a dashed line extending to Q4]				
			Forecast/Actual					
Waitākere Ranges storm remediation - French Bay Esplanade Reserve track	Green - On Track	Current status: Currently out to tender for a design and build contract. Next steps: Award design and build contract and commence design.	Baseline					
			Forecast/Actual					

# Waitākere Ranges Local Board Work programmes

16 May 2024



# Purpose

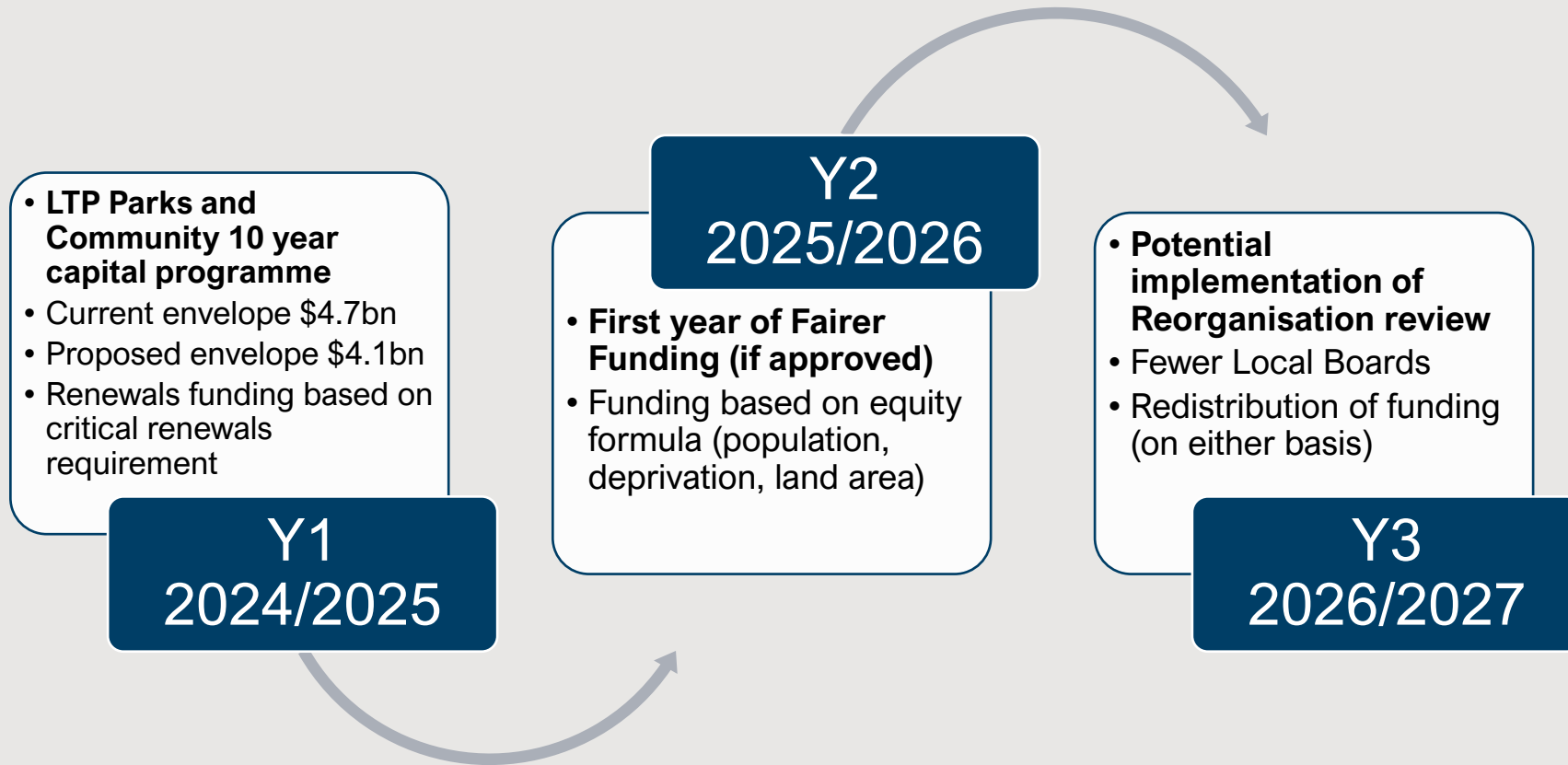
## 1. Finalise draft WRLB work programme, and balance budget.

- draft work programmes revised in response to the local board's feedback in March workshop.
- Long-term Plan decisions - 16 June
- WRLB work programmes reported to 27 June 2024 business meeting for approval

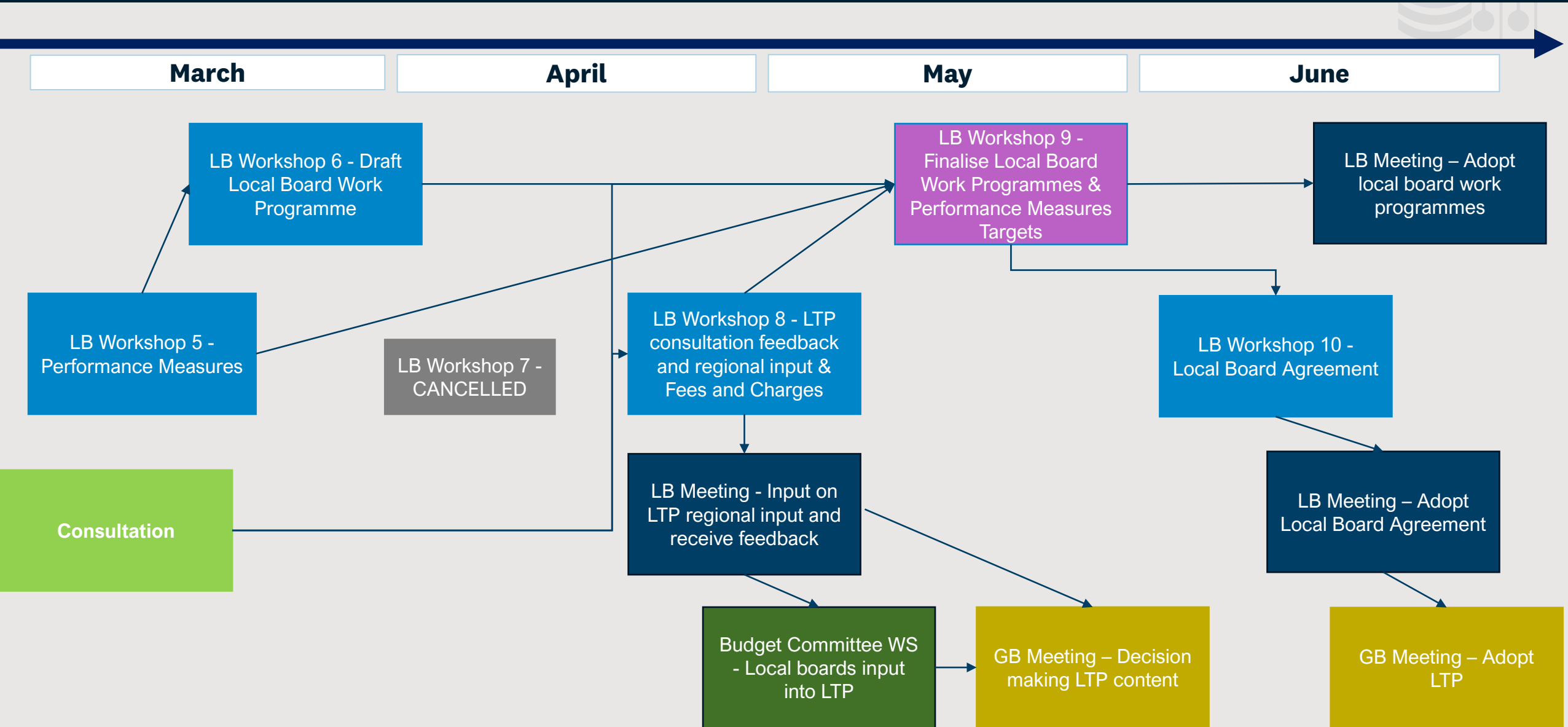
## 2. Update on performance measures



# Complex budget context



# LTP / work programme timeline



**Opex**





## **LDI opex budget - over allocated**

The LDI opex budget required for the draft work programmes exceeds the budget available.

Prioritisation of the work programme is required.

Estimated budget over allocated by \$34,375.



# Direction from last workshop

Environment / WRHA programmes

- request options for several programmes 'do more', 'do less'
- request further advice on weed bins (on-site management)
- change funding source for Welcome Pack to WRHA
- add dark sky project to WRHA



# Environment – Plans and Places (WRHA)

ID	Activity Name	Current FY	2024 - 2025	Notes
1297	Long-tailed bat (pekapeka) community education project	10,800	12,500	
1299	Scenic Drive Buffer Zone (and inland Karekare extension)	50,000	50,000	
1300	Community Weed Bins (WRHA)	97,069	97,000	
3454	Welcome Pack	11,500	13,500	
-	Dark Sky Project	7,700	6,000	



# Environment – Environmental Services

ID	Activity Name	Current FY	2024 - 2025	Notes
514	Kerbside recycling collection in Piha	3,000	3,500	
518	Waitakere Weed Action Project (Our Backyard)	100,000	100,000	
609	South Titirangi Restoration Project	15,000	15,000	
613	Pest Free Waitakere Ranges coordinator	75,000	100,000	
618	Climate Action activator	32,000	40,000	



# Environment – Environmental Services

ID	Activity Name	Current FY	2024 – 2025	Notes
622	Community Nurseries	11,550	11,900	
623	EcoFest Festival	10,000	11,300	
625	EcoMatters Environment Centre	40,500	41,800	
636	Love Your Neighbourhood (EcoMatters)	11,600	12,000	
879	Manukau Harbour Forum	8,000	11,000	
3010	West Coast animal management support	35,000	35,000	
4081	Love Your Place Awards (EcoMatters)	0	13,000	



# Customer and Community Services



# Customer and Community Services – Parks and Facilities

ID	Activity Name	Current FY	2024 - 2025	Notes
646	Eco-volunteer programme	35,000	46,440	See update on current year's work
1025	Project Twin Streams maintenance	246,100	259,200	Request for comparison to area's maintained under contract. See previous year's advice.
988	Ecological restoration contract	236,010	236,010	
990	Arboriculture contracts	684,566	684,566	
991	Full Facilities contract	2,173,504	2,173,504	maintenance implications from reduced renewals
1331	Local Parks Management Plan	15,000	0	funding expected to carry forward
3571	Provision Assessment Review	0	0	staff resource
4036	Shade Shelter Provision Assessment	0	0	staff resource
3835	Play advocacy	0	withdrawn	
4160	Te Kete Rukuruku (Maori naming of parks and places) – Tranche 3	4,000	5,000	



# Customer and Community Services – Arts and culture

ID	Activity Name	Current FY	2024 - 2025	Notes
432	Operational expenditure for Lopdell Precinct	153,166	153,166	advice sought on activation component
433	Operational grant for Te Uru	699,664	699,664	
434	Operational grant McCahon House	23,562	23,562	
435	Operational grant for West Coast Gallery	16,315	16,315	
436	Operational grant for Upstairs Gallery	52,729	62,729	proposed budget increase to be reviewed in workshop
437	Community arts programme Open Studios Waitakere	25,000	25,000	
439	Establishment grant for Shadbolt House	20,531	20,531	
440	Going West Festival	57,000	6,000	confirmed with GWT, this is enough to keep running
442	Glen Eden Playhouse	19,694	19,694	





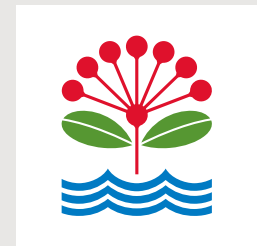
# Customer and Community Services – Events

ID	Activity Name	Current FY	2024 - 2025	Notes
458	ANZAC Services	59,000	75,180	Request for budget review
461	Event Partnership Fund	25,000	25,500	Programme of events within fund to be discussed
1353	Movies in Parks	15,000 + events staff costs	22,745	Under review
4002	Citizenship ceremonies hosted at Marae	3,000	4,706	Supported
4357	Civic events	0	7,790	Reduced to single event
4398	Heritage conference	0	22,000	Cost to be determined. Event coordinator unavailable
4412	Rangatahi-led Matariki activations	0	10,000	Proposed at last workshop



# Customer and Community Services – Connected Communities

ID	Activity Name	Current FY	2024 - 2025	Notes
443	Community Waitakere Resource Centre	30,000	30,000	
444	Pasifika youth leadership	15,000	15,000	
445	Youth: build capacity	20,000	20,000	Programme design to be confirmed
446	Placemaking and capacity building: urban neighbourhoods	55,000	55,000	
447	Placemaking: Neighbours Day	6,500	6,500	Admin cost recovery will reduce amount available for events. Otherwise, increased funding needed
448	Maori responsiveness: kaiwhakaawe	35,000	35,000	Funded by three west LBs
449	Local implementation Nga Hopori Momoho (Thriving Communities)	0	0	Diverse activities undertaken by strategic broker
450	Access to community places (venues for hire)	0	0	
451	Capacity building: community resilience	35,000	35,000	
452	Placemaking: Glen Eden	20,000	20,000	



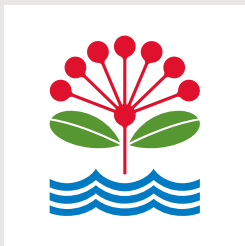
# Customer and Community Services – **Connected Communities**

ID	Activity Name	Current FY	2024 - 2025	Notes
453	Hoani Waititi Marae	74,356	76,586	
454	Activation of community led venue partners – Community Houses	86,749	89,351	
456	Top up funding agreement – Glen Eden and Titirangi Community Houses	25,000	25,000	
455	Community Halls Partnership Fund	42,000	42,000	
463	Community grants	90,898	90,898	
460	Mana Whenua engagement – operational hui	10,000	10,000	
4028	Mana whenua engagement – Governance Hui *	3,500	3,500	Managed by LBS



# Customer and Community Services – Libraries

ID	Activity Name	Current FY	2024 - 2025	Notes
1043	Library Services	981,292	1,140,248	
1049	Additional support for volunteer libraries	3,500	3,500	



**Capex**



# LTP decisions – Fairer Funding

The GB will meet to decide on whether to adopt fairer funding on 16 May. If adopted, this will impact LB budgets in FY26 and FY27.

Waiting to prepare an amended CAPEX programme until after that decision risks delaying work programme approval in June and project delivery from 1 July.

To avoid delay P&CF staff have prepared two updated work programmes for discussion:

- based on the central proposal (updated from workshop 6)
- based on the fairer funding model

Details of the differences between the two are set out in the memo provided with the workshop materials.

Feedback is sought today on the projects in both programmes. Once the GB decision is known, the appropriate programme will be finalised and presented at your June business meeting.



# Proposed capex budget allocation - Deliverable budget

Work programme Budget Summary	2024/2025	2025/2026	2026/2027
Capex Local Asset Renewals - Budget (ABS)	\$1,414,337	\$2,477,852	\$3,998,754
Local Asset Renewals - Proposed Allocation (ABS)	\$1,272,248	\$2,477,852	\$3,998,754
Advance Delivery (RAP)	\$142,089	\$0	\$0
Capex Local Asset Renewals - Unallocated budget (ABS)	\$0	\$0	\$0
Local Discretionary Initiatives (LDI Capex) - Budget	\$386,231	\$390,732	\$396,107
Local Discretionary Initiatives (LDI Capex) - Proposed Allocation	\$386,199	\$390,732	\$396,107
Advance Delivery (RAP)	\$32	\$0	\$0
Local Discretionary Initiatives (LDI Capex) - Unallocated budget	\$0	\$0	\$0
Growth projects Allocation - <i>FY24/25 – Koroī park development, FY25/26 &amp; FY26/27 – Parrs Park Skate Park upgrade</i>	\$286,598	\$0	\$50,000
Landslide Prevention projects Allocation	\$0	\$0	\$0
External Funding Allocation – <i>Watercare Mitigation funding for the Waima Reserve playground renewal project</i>	\$155,000	\$0	\$0
One Local Initiative (OLI) project Allocation	\$0	\$0	\$0
Related LDI Opex - Proposed Allocation	\$0	\$0	\$0
<b>TOTAL</b>	<b>\$2,016,978</b>	<b>\$2,918,885</b>	<b>\$4,544,861</b>



# Proposed Capex work programme - Deliverable budget

Index	ID	Activity Name	Budget Source	WS6 feedback summary	Advice in response
					There are no Capex work programme changes in response to feedback from Workshop 6.





# Capex budget allocation – Deliverable budget v Fairer funding

Waitākere Ranges	Deliverable budget (millions)				Fairer Funding (millions)			
					<i>Renewal and LDI - Capex</i>			
	FY24/25	FY25/26	FY26/27	Total	Deliverable budget	Fairer funding implementation is proposed from FY25/26		
	FY24/25	FY25/26	FY26/27	Total	FY24/25	FY25/26	FY26/27	Total
ABS: Capex (Local)	\$1.41	\$2.48	\$4.00	<b>\$7.89</b>	\$1.41	\$4.55	\$4.65	<b>\$10.61</b>
LDI - Capex	\$0.39	\$0.39	\$0.40	<b>\$1.17</b>	\$0.39	\$0.00	\$0.00	<b>\$0.39</b>
	<b>Total</b>			<b>\$9.06</b>	<b>Total</b>			<b>\$11.00</b>

*Note: In the Fairer Funding model in FY25/26 and FY26/27 there is no LDI – Capex budget allocated separately. Instead, there is a bundled Capex line that local boards can allocate at their full discretion.*



# Proposed capex budget allocation – Fairer funding

Work programme Budget Summary	2024/2025	2025/2026	2026/2027
Capex Local Asset Renewals - Budget (ABS)	<b>\$1,414,337</b>	<b>\$4,554,357</b>	<b>\$4,649,999</b>
Local Asset Renewals - Proposed Allocation (ABS)	\$1,272,248	\$4,554,357	\$4,649,999
Advance Delivery (RAP)	\$142,089	\$0	\$0
Capex Local Asset Renewals - Unallocated budget (ABS)	\$0	\$0	\$0
Local Discretionary Initiatives (LDI Capex) - Budget	<b>\$386,231</b>	<b>\$0</b>	<b>\$0</b>
Local Discretionary Initiatives (LDI Capex) - Proposed Allocation	\$386,199	\$0	\$0
Advance Delivery (RAP)	\$32	\$0	\$0
Local Discretionary Initiatives (LDI Capex) - Unallocated budget	\$0	\$0	\$0
Growth projects Allocation - <i>FY24/25 – Koroī park development, FY25/26 &amp; FY26/27 – Parris Park Skate Park upgrade</i>	\$286,598	\$0	\$50,000
Landslide Prevention projects Allocation	\$0	\$0	\$0
External Funding Allocation – <i>Watercare Mitigation funding for the Waima Reserve playground renewal project</i>	\$155,000	\$0	\$0
One Local Initiative (OLI) project Allocation	\$0	\$0	\$0
Related LDI Opex - Proposed Allocation	\$0	\$0	\$0
<b>TOTAL</b>	<b>\$2,016,978</b>	<b>\$4,554,357</b>	<b>\$4,699,999</b>



# Fairer Funding – changes

Item	ID	Activity Name	Change	Budget Source	2024/2025	2025/2026	2026/2027
1	30257	French Bay Esplanade - renew yacht club/boat ramp driveway	Project is bought forward one FY.	ABS: Capex	\$0	\$0 \$258,000	\$258,000 \$0
3	31928	Harold Moody Park - upgrade court facility	Project is bought forward one FY.	ABS: Capex	\$0	\$0 \$30,000	\$30,000 \$0
4	40091	Harold Moody Park/Duck Park - replace sports lights	Project is bought forward one FY.	ABS: Capex	\$0	\$0 \$120,000	\$120,000 \$0
9	40054	Oratia Halls - renew components	Project is bought forward one FY and increased by \$30,000.	ABS: Capex	\$0	\$0 \$100,000	\$70,000 \$0
14	23795	Robert Knox Memorial Park - renew playground and park furniture	Increased funding in FY26 by \$8,000 and FY27 by \$30,000.	ABS: Capex	\$0	\$10,000 \$18,000	\$150,000 \$180,000
20	30304	Te Pātaka Kōrero o Titirangi / Titirangi Library - replace fixtures and furniture	Project is bought forward one FY and increased by \$20,000.	ABS: Capex	\$0	\$0 \$100,000	\$80,000 \$0
21	33198	Titirangi Community House - refurbish building interior	Project is bought forward one FY and increased funding in FY27 by \$60,000.	ABS: Capex	\$0	\$0 \$80,000	\$80,000 \$360,000



# Fairer Funding – changes

Item	ID	Activity Name	Change	Budget Source	2024/2025	2025/2026	2026/2027
23	24452	Titirangi War Memorial Park - renew amenity lighting	Project is bought forward one FY.	ABS: Capex	\$0	\$7,000 \$107,000	\$100,000 \$0
25	24452	Waima Reserve - renew playground and park amenities	Increased LDI - Capex funding by \$25,000.	ABS: Capex	\$155,000	\$50,000 \$75,000	\$0
26	28611	Waitākere Ranges - install drinking fountains	Project is bought forward.	ABS: Capex	\$0	\$0	\$0 \$100,000
30	45836	Waitākere Ranges - refurbish amenity blocks	Increased funding in FY26, by \$120,000, decreased in FY28, by \$120,000.	ABS: Capex	\$0	\$5,852 \$125,852	\$170,000
31	40052	Waitākere Ranges - refurbish community buildings	Increased funding in FY26, by \$114,773 and in FY27, by \$423,138. Included two new buildings in the Activity Description.	ABS: Capex	\$0	\$10,000 \$124,773	\$395,852 \$818,990
32	36497	Waitākere Ranges - renew park / facilities fixtures and furniture FY25-FY27	Increased FY26, by \$200,000.	ABS: Capex	\$0	\$54,885 \$254,885	\$170,000
33	36496	Waitākere Ranges - renew park / facilities signage FY27-FY28	Re-established funding in FY26. Update name.	ABS: Capex	\$0	\$0 \$55,000	\$65,000



# Fairer Funding – changes

Item	ID	Activity Name	Change	Budget Source	2024/2025	2025/2026	2026/2027
34	31986	Waitākere Ranges - renew park driveways and carparks	Increased funding in FY26 by \$100,000.	ABS: Capex	\$0	\$70,000 \$170,000	\$530,000
35	28641	Waitākere Ranges - renew park structures FY26-FY28	Increased funding in FY26 by \$100,000.	ABS: Capex	\$0	\$30,000 \$130,000	\$344,902
36	28351	Waitākere Ranges - renew park walkways & paths FY25-FY27	Increased funding in FY26 by \$150,000.	ABS: Capex	\$106,623	\$100,000 \$250,000	\$345,000
40	45845	Waitipu - develop ex-quarry	Increased funding in FY26 by \$15,000 and FY27 by \$20,000.	ABS: Capex	\$0	\$15,000 \$30,000	\$130,000 \$150,000
41	31787	Waitipu / Te Henga Quarry - renew track safety features and pedestrian bridge	Increased funding in FY26 by \$40,000.	ABS: Capex	\$20,000	\$100,000 \$140,000	\$250,000



# Regional Funding Sources

- There are some projects where there is a funding component reliant on regional funding, approved through the Regional Work Programme process. The Regional Work Programme decision meeting will take place in July 2024
- The funding required to support the seismic components of projects will be discussed through the regional work programme process, however the total available budget for seismic projects will be confirmed through the LTP process.
- There is a proposal as part of the LTP to establish a seismic fund to which applications can be made for seismic funding. This is different from the current process which allocates funding through the regional work programme process. The criteria and rules for accessing that fund are yet to be determined.
- Until adopted, there is some risk that these funding sources are not available as expected and therefore may impact deliverability of the projects it relates to.
- The projects in your LB work programme where this applies are on the following slide.
- Following LTP adoption, staff will ensure the approved local board work programme reflects the regional budgets. This will address any associating impact on projects from the adopted seismic and/or growth budgets.



# Regional Work Programme Projects – For Feedback

- Proposed Growth, Seismic Strengthening and Landslips remediation and prevention projects for local boards to feedback on when adopting local programmes in June and then regional approval in July :

Index	ID	Activity Name	Programme	Total Value
11	23999	Parrs Park - upgrade skate park	Growth	\$1,230,000 (Growth of \$400,000)
21	30307	Titirangi War Memorial Hall & Library - refurbish exterior of building and storm water system	Seismic Strengthening	\$4,366,626 (Seismic Strengthening of \$1,617,395)



# Next steps

Work programmes approved in  
June business meeting





# Performance Measures & Targets

May 2024



## Purpose

Inform local boards of staff recommended targets based on:

- Measures agreed in LBAP5





## Measure framework recap & how targets are set

The measure framework is designed to comply with legislation and enable the public to assess service provision and service levels from local boards.

- Core measures: targets set by the business unit, reflecting the network nature of these services.
- Tailored measures: set based on investment levels in the draft local board work programmes, with specific line items contributing to targets.



## **Response from further investigation of key areas**

The following areas were identified as key priorities by the board however, after looking into them further, staff have advised they cannot be progressed for 2024/2025 for the following reasons.

### **Emergency action planning/resilience:**

This measure used to be attributed to Customer and Community Services however it really sits within the remit of AEM.

AEM are currently producing Readiness and Response Plans for the boards which are included in the 2024/2025 work programme – this is currently regionally funded so does not fit into the structure of the LBA



# Local board core measures - targets

Measure wording (Local community services)	Target for LBA 2024/2025
<b><i>Auckland Council Level of Service statement: Enable a range of choices to access community services and recreation opportunities</i></b>	
The percentage of time physical library services are accessible to the community*	100%
The number of visits to library facilities (existing)	197,359
The percentage of local community facility components that are in poor or very poor condition*	20%

\*reworded since previous workshop



## Local board core measures – targets (continued)

Measure wording (Local community services)	Target for LBA 2024/2025
<b><i>Auckland Council Level of Service statement: Provide urban green spaces (local parks, paths and Ngahere) and access to the coast</i></b>	
The percentage of local parks, facilities and spaces meeting maintenance quality standards*	90%
The percentage of local open space asset components that are in poor or very poor condition*	6%

Measure wording (Local Planning and Development)	Target for LBA 2024/2025
<b><i>Auckland Council Level of Service statement: TBD</i></b>	
The percentage of Business Associations meeting their Business Improvement District (BID) targeted rate grant agreement obligations	100%

\*reworded since previous workshop



# Local Board tailored measures - targets

LTP activity	Measure wording	2024/2025 target	Contributing work programme lines
Local Community	Number of local community events delivered	15	461, 1353 – 1 council, 4 partner led.
	Number of partner organisations and groups funded to deliver placemaking activities*	50	Community Delivery work programme lines
Local Environment	Volunteer time* undertaking animal and/or plant pest control	173+	Waitakere Weed Action South Titirangi Restoration Love your neighbourhood (EcoMatters) - TBD
	Rounds of pest control carried out in key areas <sup>1</sup>	150	TBD

\*reworded since previous workshop



## **Next steps**

Targets to be adjusted based on any changes in investment levels after workshop 9.

Updated targets reflected in draft Local Board Agreement – workshop 10.

Adoption of Local Board Agreement in mid-June





## Customer and Community Services Capex Work Programme 2024/2025 - Waitākere Ranges Local Board (Deliverable Budget)

Index	ID	Activity Name	Activity Description	RAP	Activity Benefits	Further Decision Points for LB	LB Plan Outcome	LB Plan Objective	Lead Dept/Unit or CCO	Estimated completion date	Budget Source	2023/2024 FCast + prior years	2024/2025	2025/2026	2026/2027	2027/2028 +	Total Cost	WP Planning Status
1	30257	French Bay Esplanade - renew yacht club/boat ramp driveway	Renew driveway to yacht club and boat ramps.□ FY22/23 to FY23/24 - investigation and design□ FY26/27 - physical works□	-	Maintaining current service levels	No further decisions are anticipated	2023WR3 - Our community	2023WR3.1 - Our parks and open spaces provide opportunities for recreation and enjoyment by the surrounding local communities, and a place for nature	P&CF: Project Delivery	Estimated project completion June 2027	ABS: Capex - Local Renewal	\$47,799	\$0	\$0	\$258,000	\$0	\$305,799	Change
2	30258	George Herring Common - develop park	Develop park in consultation with local residents.□ The Waitākere Ranges Play Network Provision Study (May 2021) recommends providing play experiences for younger children to complement the closest playspaces and the addition of seating and planting trees for shade.□ FY24/25 - investigation and design□ FY25/26 - physical work□ Risk Adjusted Programme (RAP) project.□	RAP Project	Park development will provide new recreational opportunities for local residents where there is an identified provision gap	Concept design approval is required	2023WR3 - Our community	2023WR3.1 - Our parks and open spaces provide opportunities for recreation and enjoyment by the surrounding local communities, and a place for nature	P&CF: Project Delivery	Estimated project completion June 2026	LDI - Capex	\$0	\$7,000	\$90,000	\$0	\$0	\$97,000	Continue
3	40091	Harold Moody Park/Duck Park - replace sports lights	Replace sports lighting with LED lights.□ FY26/27 - investigation and physical works	-	Maintaining current service levels	No further decisions are anticipated	2023WR3 - Our community	2023WR3.1 - Our parks and open spaces provide opportunities for recreation and enjoyment by the surrounding local communities, and a place for nature	P&CF: Project Delivery	Estimated project completion June 2027□	ABS: Capex - Local Renewal	\$0	\$0	\$0	\$120,000	\$0	\$120,000	Continue
4	24088	Huia Domain - renew skate half pipe	Renew or refurbish the skate half pipe at Huia Domain.□ FY26/27 - investigation and physical works□	-	Maintaining current service levels	No further decisions are anticipated	2023WR3 - Our community	2023WR3.1 - Our parks and open spaces provide opportunities for recreation and enjoyment by the surrounding local communities, and a place for nature	P&CF: Project Delivery	Estimated project completion June 2027	ABS: Capex - Local Renewal	\$0	\$0	\$0	\$150,000	\$0	\$150,000	Continue
5	27877	Koroī / Clayburn Reserve - develop neighbourhood park□	Develop Koroī / Clayburn Reserve in consultation with the community.□ The Waitākere Ranges Play Network Provision Study (May 2021) recommends consideration for features such as courts or wheeled play in addition to a more standard playspace for children.□ FY22/23 to FY23/24 - investigation and design□ FY24/25 - physical works□ Funding Contributions:□ \$20,000 - LDI Capex□ \$611,598 - Growth□ \$56,613 - Local Renewal□	-	Development of new park amenities to address network provision gaps enabling community access to a wider range of facilities and providing access to open space and recreational opportunities to meet the needs of new and future residents.□	Concept design approval is required□	2023WR3 - Our community	2023WR3.1 - Our parks and open spaces provide opportunities for recreation and enjoyment by the surrounding local communities, and a place for nature	P&CF: Project Delivery	Estimated project completion June 2025	ABS: Capex - Growth (regional), ABS: Capex - Local Renewal, LDI - Capex	\$53,094	\$601,139	\$0	\$0	\$0	\$654,233	Continue
6	45858	Les Waygood Park - development of ex-campground	Investigation, consultation, design and develop the ex-campground area at Les Waygood Park for recreation.□ FY26/27 - investigation and design□ FY27/28 - physical works	-	Park development to meet community needs	Concept design approval is required	2023WR3 - Our community	2023WR3.1 - Our parks and open spaces provide opportunities for recreation and enjoyment by the surrounding local communities, and a place for nature	P&CF: Project Delivery	Estimated project completion June 2028□	LDI - Capex	\$0	\$0	\$0	\$30,000	\$100,000	\$130,000	New

## Customer and Community Services Capex Work Programme 2024/2025 - Waitākere Ranges Local Board (Deliverable Budget)

Index	ID	Activity Name	Activity Description	RAP	Activity Benefits	Further Decision Points for LB	LB Plan Outcome	LB Plan Objective	Lead Dept/Unit or CCO	Estimated completion date	Budget Source	2023/2024 FCast + prior years	2024/2025	2025/2026	2026/2027	2027/2028 +	Total Cost	WP Planning Status
7	30256	Maea / Foothills Lane Reserve - renew playground and park furniture	Renew playground and park furniture in consultation with local residents. □ Plant several shade trees. □ □ FY26/27 - investigation and design □ FY27/28 - physical works □ □	-	Maintaining current service levels	No further decisions are anticipated	2023WR3 - Our community	2023WR3.1 - Our parks and open spaces provide opportunities for recreation and enjoyment by the surrounding local communities, and a place for nature	P&CF: Project Delivery	Estimated project completion June 2028	ABS: Capex - Local Renewal	\$0	\$0	\$0	\$10,000	\$140,000	\$150,000	Continue
8	40054	Oratia Halls - renew components	Undertake minor renewal work on halls. □ □ FY26/27 - investigation and physical works	-	Maintaining current service levels	No further decisions are anticipated	2023WR3 - Our community	2023WR3.1 - Our parks and open spaces provide opportunities for recreation and enjoyment by the surrounding local communities, and a place for nature	P&CF: Project Delivery	Estimated project completion June 2027	ABS: Capex - Local Renewal	\$0	\$0	\$0	\$70,000	\$0	\$70,000	Continue
9	45846	Pānaki / Withers Reserve - relocate community pump track	Relocate the community built pump track from Kowhai Reserve to Pānaki / Withers Reserve. □ □ FY24/25 - investigation and physical works	-	Increased service levels to meet community needs	Concept design approval is required	2023WR1 - Our People	2023WR1.3 - People from our diverse communities are connected and feel as though they belong	P&CF: Project Delivery	Estimated project completion June 2025	LDI - Capex	\$0	\$30,000	\$0	\$0	\$0	\$30,000	New
10	24425	Parrs Park - renew sports field irrigation system	Replace failing hydraulic irrigation system with a solenoid system. Separate water supply from toilets. □ □ FY25/26 - investigation and design □ FY26/27 - physical works □	-	Maintaining current service levels	No further decisions are anticipated	2023WR3 - Our community	2023WR3.1 - Our parks and open spaces provide opportunities for recreation and enjoyment by the surrounding local communities, and a place for nature	P&CF: Project Delivery	Estimated project completion June 2027	ABS: Capex - Local Renewal	\$0	\$0	\$10,000	\$405,000	\$0	\$415,000	Continue
11	23999	Parrs Park - upgrade skate park □	Upgrade skate park to provide a wheeled play facility which caters for a wide age and ability range, in this brown fields growth area. □ □ FY24/25 - investigation and consultation □ FY25/26 - consenting and commence physical works □ FY26/27 to FY27/28 - complete physical works □ □ Funding Contributions: □ \$430,000 - LDI Capex □ \$400,000 - Growth □ \$400,000 - Local Renewal □	-	Development of new park amenities will address network provision gaps enabling community access to a wider range of facilities	No further decisions are anticipated □	2023WR3 - Our community	2023WR3.1 - Our parks and open spaces provide opportunities for recreation and enjoyment by the surrounding local communities, and a place for nature	P&CF: Project Delivery	Estimated project completion June 2028 □	ABS: Capex - Growth (regional), ABS: Capex - Local Renewal, LDI - Capex	\$0	\$0	\$80,000	\$250,000	\$900,000	\$1,230,000	Continue
12	30279	Piha Domain - renew playground	Renew playground including edging. □ □ FY24/25 - investigation, design and physical works □ □	-	Maintaining current service levels	No further decisions are anticipated	2023WR3 - Our community	2023WR3.1 - Our parks and open spaces provide opportunities for recreation and enjoyment by the surrounding local communities, and a place for nature	P&CF: Project Delivery	Estimated project completion June 2025	ABS: Capex - Local Renewal	\$0	\$212,000	\$0	\$0	\$0	\$212,000	Change
13	23795	Robert Knox Memorial Park - renew playground and park furniture	Renew the playground and associated park furniture. □ □ FY25/26 - investigation and design □ FY26/27 - physical works	-	Maintaining current service levels	No further decisions are anticipated	2023WR3 - Our community	2023WR3.1 - Our parks and open spaces provide opportunities for recreation and enjoyment by the surrounding local communities, and a place for nature	P&CF: Project Delivery	Estimated project completion June 2027	ABS: Capex - Local Renewal	\$0	\$0	\$10,000	\$150,000	\$0	\$160,000	Change

## Customer and Community Services Capex Work Programme 2024/2025 - Waitākere Ranges Local Board (Deliverable Budget)

Index	ID	Activity Name	Activity Description	RAP	Activity Benefits	Further Decision Points for LB	LB Plan Outcome	LB Plan Objective	Lead Dept/Unit or CCO	Estimated completion date	Budget Source	2023/2024 FCast + prior years	2024/2025	2025/2026	2026/2027	2027/2028 +	Total Cost	WP Planning Status
14	37664	Sandys Parade - upgrade park amenities	In consultation with the local community, upgrade park amenities including vegetation and seating. Consider installation of a BBQ. <input type="checkbox"/> FY24/25 - investigation and design <input type="checkbox"/> FY25/26 - physical works <input type="checkbox"/> Risk Adjusted Programme (RAP) project.	RAP Project	Increasing service levels to meet community needs	Concept design approval is required	2023WR3 - Our community	2023WR3.1 - Our parks and open spaces provide opportunities for recreation and enjoyment by the surrounding local communities, and a place for nature	P&CF: Project Delivery	Estimated project completion June 2026	LDI - Capex	\$0	\$10,000	\$85,000	\$0	\$0	\$95,000	New
15	30285	Tangiwai Reserve - renew playground	Renew playground (swing set) at time of renewal and improve access as a part of the work. <input type="checkbox"/> FY26/27 - investigation and physical works	-	Maintaining current service levels <input type="checkbox"/>	No further decisions are anticipated <input type="checkbox"/>	2023WR3 - Our community	2023WR3.1 - Our parks and open spaces provide opportunities for recreation and enjoyment by the surrounding local communities, and a place for nature	P&CF: Project Delivery	Estimated project completion June 2027	ABS: Capex - Local Renewal	\$0	\$0	\$0	\$60,000	\$0	\$60,000	New
16	27881	Tauroru / Maywood Park - undertake park development <input type="checkbox"/>	Consultation and design for park development i.e. trees, orchard, swing set and seat. <input type="checkbox"/> FY24/25 - investigation and design <input type="checkbox"/> FY25/26 - physical works <input type="checkbox"/> Risk Adjusted Programme (RAP) project. <input type="checkbox"/> <input type="checkbox"/> <input type="checkbox"/>	RAP Project	Development of new park amenities will address network provision gaps enabling community access to a wider range of facilities <input type="checkbox"/>	Concept design approval is required <input type="checkbox"/>	2023WR3 - Our community	2023WR3.1 - Our parks and open spaces provide opportunities for recreation and enjoyment by the surrounding local communities, and a place for nature	P&CF: Project Delivery	Estimated project completion June 2026 <input type="checkbox"/>	LDI - Capex	\$0	\$10,000	\$85,000	\$0	\$0	\$95,000	Continue
17	23820	Te Henga Park - undertake park development <input type="checkbox"/>	Develop park in consultation with the local community and iwi. <input type="checkbox"/> The Waitākere Ranges Play Network Provision Study (May 2021) recommends consideration being given to cultural and natural play features. <input type="checkbox"/> FY26/27 - consultation and design <input type="checkbox"/> FY27/28 - physical works <input type="checkbox"/> <input type="checkbox"/>	-	Increased service levels to meet community needs <input type="checkbox"/>	Concept design approval is required <input type="checkbox"/>	2023WR3 - Our community	2023WR3.1 - Our parks and open spaces provide opportunities for recreation and enjoyment by the surrounding local communities, and a place for nature	P&CF: Project Delivery	Estimated project completion June 2028 <input type="checkbox"/>	LDI - Capex	\$0	\$0	\$0	\$15,000	\$215,000	\$230,000	Change
18	28167	Te Kakau - develop cultural park features	Engage with locally based Māori youth to facilitate the design and installation of cultural features in Te Kakau. Implement concept design as funding allows. <input type="checkbox"/> FY20/21 to FY22/23 - investigation and design (working with students) <input type="checkbox"/> FY24/25 - physical works <input type="checkbox"/> <input type="checkbox"/>	-	Engaging with rangatahi to design and deliver desired outcomes provides opportunity for learning and understanding, ownership and improved open spaces for all	Concept design approval is required	2023WR3 - Our community	2023WR3.1 - Our parks and open spaces provide opportunities for recreation and enjoyment by the surrounding local communities, and a place for nature	P&CF: Project Delivery	Estimated project completion June 2025	LDI - Capex	\$53,369	\$303,566	\$0	\$0	\$0	\$356,935	Continue
19	30304	Te Pātaka Kōrero o Titirangi / Titirangi Library - replace fixtures and furniture	Undertake minor refurbishment work and replace fixtures and furniture. <input type="checkbox"/> FY26/27 - investigation and physical works <input type="checkbox"/>	-	Maintaining current service levels <input type="checkbox"/>	No further decisions are anticipated <input type="checkbox"/>	2023WR3 - Our community	2023WR3.1 - Our parks and open spaces provide opportunities for recreation and enjoyment by the surrounding local communities, and a place for nature	P&CF: Project Delivery	Estimated project completion June 2027	ABS: Capex - Local Renewal	\$0	\$0	\$0	\$80,000	\$0	\$80,000	Continue
20	33198	Titirangi Community House - refurbish building interior	Refurbish the interior of the community house to meet the needs of users. <input type="checkbox"/> FY26/27 - investigation and design <input type="checkbox"/> FY27/28 - physical works	-	Maintaining current service levels	No further decisions are anticipated	2023WR3 - Our community	2023WR3.1 - Our parks and open spaces provide opportunities for recreation and enjoyment by the surrounding local communities, and a place for nature	P&CF: Project Delivery	Estimated project completion June 2028	ABS: Capex - Local Renewal	\$0	\$0	\$0	\$80,000	\$300,000	\$380,000	Continue

**Customer and Community Services Capex Work Programme 2024/2025 - Waitākere Ranges Local Board (Deliverable Budget)**

Index	ID	Activity Name	Activity Description	RAP	Activity Benefits	Further Decision Points for LB	LB Plan Outcome	LB Plan Objective	Lead Dept/Unit or CCO	Estimated completion date	Budget Source	2023/2024 FCast + prior years	2024/2025	2025/2026	2026/2027	2027/2028 +	Total Cost	WP Planning Status
21	30307	Titirangi War Memorial Hall & Library - refurbish exterior of building and storm water system	Replace cladding, structural timbers, windows, roofs and storm water system on the War Memorial Hall as outlined in the November 2021 destructive investigation report. Seismically strengthening the hall. □ Replace library exterior cladding and structural timbers where necessary. □  FY21/22 to FY23/24 - investigation and design □ FY24/25 to FY25/26 - physical works □ Risk Adjusted Programme (RAP) project. □  Funding contribution: ABS: Capex - Local Renewal - \$2,676,447. □ Funding contribution: Regional Seismic Strengthening - \$1,617,395. □	RAP Project	Maintaining current service levels. □	No further decisions are anticipated □	2023WR3 - Our community	2023WR3.1 - Our parks and open spaces provide opportunities for recreation and enjoyment by the surrounding local communities, and a place for nature	P&CF: Project Delivery	Estimated project completion June 2026	ABS: Capex - Local Renewal, Seismic Strengthening	\$249,231	\$1,010,280	\$3,107,115	\$0	\$0	\$4,366,626	Continue
22	24452	Titirangi War Memorial Park - renew amenity lighting □	Renew park amenity lighting to today's standard, at Titirangi War Memorial Park. □  FY25/26 - investigation and design □ FY26/27 - physical works □ Risk Adjusted Programme (RAP) project - investigation and design only. □	RAP Project	Maintaining current service levels	No further decisions are anticipated	2023WR3 - Our community	2023WR3.1 - Our parks and open spaces provide opportunities for recreation and enjoyment by the surrounding local communities, and a place for nature	P&CF: Project Delivery	Estimated project completion June 2027	ABS: Capex - Local Renewal	\$161	\$0	\$7,000	\$100,000	\$0	\$107,161	Continue
23	31785	Uru / Westview Reserve - undertake park development	Develop park in consultation with local residents. □  FY26/27 - investigation and consultation □ FY27/28 - design and consenting □ FY28/29 - physical works	-	Increased service levels to meet community needs	Concept design approval is required	2023WR3 - Our community	2023WR3.1 - Our parks and open spaces provide opportunities for recreation and enjoyment by the surrounding local communities, and a place for nature	P&CF: Project Delivery	Estimated project completion June 2029	LDI - Capex	\$0	\$0	\$0	\$25,000	\$450,000	\$475,000	Continue
24	27890	Waima Reserve - renew playground and park amenities □	Upgrade playground and park amenities at time of renewal, improving access as a part of the work. □  FY24/25 - investigation and design □ FY25/26 - physical works □  (Watercare mitigation funding for renewal \$155,000, LDI Capex contribution \$50,000) □ Risk Adjusted Programme (RAP) project. □	RAP Project	Improved open spaces to meet community needs □	No further decisions are anticipated □	2023WR3 - Our community	2023WR3.1 - Our parks and open spaces provide opportunities for recreation and enjoyment by the surrounding local communities, and a place for nature	P&CF: Project Delivery	Estimated project completion June 2026 □	External Funding, LDI - Capex	\$0	\$155,000	\$50,000	\$0	\$0	\$205,000	Change
25	28612	Waitākere Ranges - provide built shade at suburb parks	Design and construct shade sails or shelters in alignment with recommendations in the Recreation Assessment report in identified parks/reserve. □  FY25/26 to FY27/28 - investigation, design and physical works	-	Increased service levels to meet community needs □	Concept design approval is required □	2023WR3 - Our community	2023WR3.1 - Our parks and open spaces provide opportunities for recreation and enjoyment by the surrounding local communities, and a place for nature	P&CF: Project Delivery	Estimated project completion June 2028 □	LDI - Capex	\$0	\$0	\$5,000	\$66,107	\$120,000	\$191,107	Continue
26	28613	Waitākere Ranges - provide natural shade in parks & street berms FY25-FY26 □	Plant suitable specimen trees at identified parks and streetscapes for shade provision, in accordance with the Urban Ngahere (Forest) Strategy. □  FY24/25 to FY25/26 - investigation and physical works □	-	Increased service levels to meet community needs □	Concept design approval is required □	2023WR2 - Our environment	2023WR2.3 - Protection and enhancement of urban tree cover	P&CF: Project Delivery	Estimated project completion June 2026 □	LDI - Capex	\$0	\$25,633	\$30,732	\$0	\$0	\$56,365	Continue

## Customer and Community Services Capex Work Programme 2024/2025 - Waitākere Ranges Local Board (Deliverable Budget)

Index	ID	Activity Name	Activity Description	RAP	Activity Benefits	Further Decision Points for LB	LB Plan Outcome	LB Plan Objective	Lead Dept/Unit or CCO	Estimated completion date	Budget Source	2023/2024 FCast + prior years	2024/2025	2025/2026	2026/2027	2027/2028 +	Total Cost	WP Planning Status
27	36495	Waitakere Ranges - provide natural shade in parks & street berms FY27-FY28	Plant suitable specimen trees at identified parks and streetscapes for shade provision, in accordance with the Urban Ngahere (Forest) Strategy. FY26/27 to FY27/28 - investigation and physical works	-	Increased service levels to meet community needs	No further decisions are anticipated	2023WR2 - Our environment	2023WR2.3 - Protection and enhancement of urban tree cover	P&CF: Project Delivery	Estimated project completion June 2028	LDI - Capex	\$0	\$0	\$0	\$30,000	\$30,000	\$60,000	New
28	45836	Waitākere Ranges - refurbish amenity blocks	Refurbish amenity blocks, including improving accessibility for all users. Priority sites are: French Bay Esplanade and Titirangi Beach Reserve. FY25/26 to FY26/27 - investigation and design FY26/27 to FY27/28 - physical work	-	Maintaining current service levels	No further decisions are anticipated	2023WR3 - Our community	2023WR3.1 - Our parks and open spaces provide opportunities for recreation and enjoyment by the surrounding local communities, and a place for nature	P&CF: Project Delivery	Estimated project completion June 2028	ABS: Capex - Local Renewal	\$0	\$0	\$5,852	\$170,000	\$350,000	\$525,852	New
29	40052	Waitākere Ranges - refurbish community buildings	Refurbish community buildings or components of buildings, including improving accessibility for all users. Building which require investigation are: Laingholm Ex-Doctors Rooms and Laingholm Hall. FY25/26 to FY26/27 - investigation and design FY26/27 to FY27/28 - physical work	-	Maintaining current service levels	No further decisions are anticipated	2023WR3 - Our community	2023WR3.1 - Our parks and open spaces provide opportunities for recreation and enjoyment by the surrounding local communities, and a place for nature	P&CF: Project Delivery	Estimated project completion June 2028	ABS: Capex - Local Renewal	\$0	\$0	\$10,000	\$395,852	\$450,000	\$855,852	New
30	36497	Waitākere Ranges - renew park / facilities fixtures and furniture FY25-FY27	Renew park and facilities fixtures and furniture. Priority sites are: Piha and Te Henga (rubbish bin renewal). FY24/25 to FY26/27 - investigation and physical works Risk Adjusted Programme (RAP) project.	RAP Project	Maintaining current service levels	No further decisions are anticipated	2023WR3 - Our community	2023WR3.1 - Our parks and open spaces provide opportunities for recreation and enjoyment by the surrounding local communities, and a place for nature	P&CF: Project Delivery	Estimated project completion June 2027	ABS: Capex - Local Renewal	\$0	\$108,863	\$54,885	\$170,000	\$0	\$333,748	Continue
31	36496	Waitākere Ranges - renew park / facilities signage FY27-FY28	Renew community facilities and park signage - sites to be confirmed, incorporating Te Kete Rukuruku. FY26/27 to FY27/28 - investigation and physical works	-	Maintaining current service levels	No further decisions are anticipated	2023WR3 - Our community	2023WR3.1 - Our parks and open spaces provide opportunities for recreation and enjoyment by the surrounding local communities, and a place for nature	P&CF: Project Delivery	Estimated project completion June 2028	ABS: Capex - Local Renewal	\$0	\$0	\$0	\$65,000	\$45,000	\$110,000	Change
32	31986	Waitākere Ranges - renew park driveways and carparks	Renew park driveways and carparks. Priority sites are: Parrs Park, Titirangi War Memorial Park and Piha Domain. FY25/26 to FY26/27 - investigation and design FY26/27 to FY27/28 - physical works Risk Adjusted Programme (RAP) project - investigation and design only.	RAP Project	Maintaining current service levels	No further decisions are anticipated	2023WR3 - Our community	2023WR3.1 - Our parks and open spaces provide opportunities for recreation and enjoyment by the surrounding local communities, and a place for nature	P&CF: Project Delivery	Estimated project completion June 2028	ABS: Capex - Local Renewal	\$2,971	\$0	\$70,000	\$530,000	\$417,000	\$1,019,971	Continue
33	28641	Waitākere Ranges - renew park structures FY26-FY28	Renew park structures such as retaining walls. Priority sites are: Duck Park, Titirangi War Memorial Hall and Opanuku Marginal Strip. FY25/26 to FY26/27 - investigation and design FY26/27 to FY27/28 - physical works Risk Adjusted Programme (RAP) project - investigation and design only.	RAP Project	Maintaining current service levels	No further decisions are anticipated	2023WR3 - Our community	2023WR3.1 - Our parks and open spaces provide opportunities for recreation and enjoyment by the surrounding local communities, and a place for nature	P&CF: Project Delivery	Estimated project completion June 2028	ABS: Capex - Local Renewal	\$340	\$0	\$30,000	\$344,902	\$300,000	\$675,242	Continue

## Customer and Community Services Capex Work Programme 2024/2025 - Waitākere Ranges Local Board (Deliverable Budget)

Index	ID	Activity Name	Activity Description	RAP	Activity Benefits	Further Decision Points for LB	LB Plan Outcome	LB Plan Objective	Lead Dept/Unit or CCO	Estimated completion date	Budget Source	2023/2024 FCast + prior years	2024/2025	2025/2026	2026/2027	2027/2028 +	Total Cost	WP Planning Status
34	28351	Waitākere Ranges - renew park walkways & paths FY25-FY27	Renew walkway and paths. □ Priority sites are: Mt Atkinson Park and Davies Bay. □ Working in alignment with the Community Facilities Strategic Projects Unit to consider issues of Kauri Dieback Disease. □ □ FY24/25 - investigation and design □ FY25/26 to FY26/27 - physical works □ Risk Adjusted Programme (RAP) project. □ □ □ □	RAP Project	Maintaining current service levels	No further decisions are anticipated	2023WR3 - Our community	2023WR3.1 - Our parks and open spaces provide opportunities for recreation and enjoyment by the surrounding local communities, and a place for nature	P&CF: Project Delivery	Estimated project completion June 2027 □	ABS: Capex - Local Renewal	\$0	\$106,623	\$100,000	\$345,000	\$0	\$551,623	Continue
35	40057	Waitākere Ranges - renew park walkways & paths FY27-FY29	Renew walkway and paths. Sites to be confirmed. Working in alignment with the Community Facilities Strategic Projects Unit to consider issues of Kauri Dieback Disease. □ □ FY26/27 to FY27/28 - investigation and design □ FY27/28 to FY28/29 - physical works	-	Maintaining current service levels	No further decisions are anticipated	2023WR3 - Our community	2023WR3.1 - Our parks and open spaces provide opportunities for recreation and enjoyment by the surrounding local communities, and a place for nature	P&CF: Project Delivery	Estimated project completion June 2029	ABS: Capex - Local Renewal	\$0	\$0	\$0	\$25,000	\$400,000	\$425,000	New
36	45835	Waitākere Ranges - renew playground components	Renew playground components such as single play items, edging and safety surfacing. □ Priority sites are: Titirangi Beach Reserve and Olive Grove. □ □ FY25/26 to FY26/27 - investigation and physical works □ Risk Adjusted Programme (RAP) project. □	-	Maintaining current service levels	No further decisions are anticipated	2023WR3 - Our community	2023WR3.1 - Our parks and open spaces provide opportunities for recreation and enjoyment by the surrounding local communities, and a place for nature	P&CF: Project Delivery	Estimated project completion June 2027	ABS: Capex - Local Renewal	\$0	\$0	\$73,000	\$190,000	\$0	\$263,000	New
37	30589	Waitākere Ranges - renew/refurbish building roofs & associated assets	Renew/refurbish roofs and associated assets on community buildings, such as Glen Eden Community House, Ceramco Function Centre and Titirangi Kindergarten. □ □ FY23/24 to FY24/25 - investigation and physical works □ □	-	Maintaining current service levels	No further decisions are anticipated	2023WR3 - Our community	2023WR3.1 - Our parks and open spaces provide opportunities for recreation and enjoyment by the surrounding local communities, and a place for nature	P&CF: Project Delivery	Estimated project completion June 2025	ABS: Capex - Local Renewal	\$93,948	\$17,336	\$0	\$0	\$0	\$111,284	Continue
38	45845	Waitipu - develop ex-quarry	Plan, consult, design and undertake development of the old quarry site. □ □ FY25/26 to FY26/27 - investigation, consultation and design □ FY26/27 to FY27/28 - physical works	-	Increased service levels to meet community needs	Concept design approval is required	2023WR3 - Our community	2023WR3.1 - Our parks and open spaces provide opportunities for recreation and enjoyment by the surrounding local communities, and a place for nature	P&CF: Project Delivery	Estimated project completion June 2028	LDI - Capex	\$0	\$0	\$15,000	\$130,000	\$160,000	\$305,000	New
39	31787	Waitipu / Te Henga Quarry - renew track safety features and pedestrian bridge	Renew pedestrian bridge which links tracks at the top of the waterfall. Install track safety features. Design to a 'Short Walk' standard. □ □ FY24/25 to FY26/27 - investigation, design and physical works □ Risk Adjusted Programme (RAP) project. □	RAP Project	Maintaining current service levels	No further decisions are anticipated	2023WR3 - Our community	2023WR3.1 - Our parks and open spaces provide opportunities for recreation and enjoyment by the surrounding local communities, and a place for nature	P&CF: Project Delivery	Estimated project completion June 2027	ABS: Capex - Local Renewal	\$0	\$20,000	\$100,000	\$250,000	\$0	\$370,000	Continue

**Customer and Community Services Capex Work Programme 2024/2025 - Waitākere Ranges Local Board (Deliverable Budget)**

Index	ID	Activity Name	Activity Description	RAP	Activity Benefits	Further Decision Points for LB	LB Plan Outcome	LB Plan Objective	Lead Dept/Unit or CCO	Estimated completion date	Budget Source	2023/2024 FCast + prior years	2024/2025	2025/2026	2026/2027	2027/2028 +	Total Cost	WP Planning Status
40	30333	Wood Bay Reserve - renew playground	Renew playground (swing set). FY26/27 - investigation and physical works	-	Maintaining current service levels	No further decisions are anticipated	2023WR3 - Our community	2023WR3.1 - Our parks and open spaces provide opportunities for recreation and enjoyment by the surrounding local communities, and a place for nature	P&CF: Project Delivery	Estimated project completion June 2027	ABS: Capex - Local Renewal	\$0	\$0	\$0	\$30,000	\$0	\$30,000	Continue
												\$500,913	\$2,617,440	\$4,018,584	\$4,544,861	\$4,377,000	\$16,058,798	

**Customer and Community Services Capex Work Programme 2024/2025 - Waitākere Ranges Local Board (Fairer Funding)**

Index	ID	Activity Name	Activity Description	RAP	Activity Benefits	Further Decision Points for LB	LB Plan Outcome	LB Plan Objective	Lead Dept/Unit or CCO	Estimated completion date	Budget Source	2023/2024 FCast + prior years Actual	2024/2025	2025/2026	2026/2027	2027/2028+	Total Cost	WP Planning Status	Proposed change
1	30257	French Bay Esplanade - renew yacht club/boat ramp driveway	Renew driveway to yacht club and boat ramps. FY22/23 to FY23/24 - investigation and design FY25/26 - physical works	-	Maintaining current service levels	No further decisions are anticipated	2023WR3 - Our community	2023WR3.1 - Our parks and open spaces provide opportunities for recreation and enjoyment by the surrounding local communities, and a place for nature	P&CF: Project Delivery	Estimated project completion June 2026	ABS: Capex - Local Renewal	\$47,799	\$0	\$258,000	\$0	\$0	\$305,799	Change	Bought forward one FY.
2	30258	George Herring Common - develop park	Develop park in consultation with local residents. The Waitākere Ranges Play Network Provision Study (May 2021) recommends providing play experiences for younger children to complement the closest playspaces and the addition of seating and planting trees for shade. FY24/25 - investigation and design FY25/26 - physical work Risk Adjusted Programme (RAP) project.	RAP Project	Park development will provide new recreational opportunities for local residents where there is an identified provision gap	Concept design approval is required	2023WR3 - Our community	2023WR3.1 - Our parks and open spaces provide opportunities for recreation and enjoyment by the surrounding local communities, and a place for nature	P&CF: Project Delivery	Estimated project completion June 2026	LDI - Capex	\$0	\$7,000	\$90,000	\$0	\$0	\$97,000	Continue	
3	31928	Harold Moody Park - upgrade court facility	Investigate and implement option to upgrade the eastern court for multi-play such as basketball. Ensure easy access for all users to court. Provision of courts at this park is noted as a medium priority in the Waitākere Ranges Play Network Provision Study (May 2021). FY26/27 - consultation, design and physical works	-	Increasing service levels to meet community needs.	No further decisions are anticipated	2023WR3 - Our community	2023WR3.1 - Our parks and open spaces provide opportunities for recreation and enjoyment by the surrounding local communities, and a place for nature	P&CF: Project Delivery	Estimated project completion June 2027	LDI - Capex	0	0	0	30,000	0	30,000	New	Bought forward one FY.
4	40091	Harold Moody Park/Duck Park - replace sports lights	Replace sports lighting with LED lights. FY25/26 - investigation and physical works	-	Maintaining current service levels	No further decisions are anticipated	2023WR3 - Our community	2023WR3.1 - Our parks and open spaces provide opportunities for recreation and enjoyment by the surrounding local communities, and a place for nature	P&CF: Project Delivery	Estimated project completion June 2026	ABS: Capex - Local Renewal	\$0	\$0	\$120,000	\$0	\$0	\$120,000	Continue	Bought forward one FY.
5	24088	Huia Domain - renew skate half pipe	Renew or refurbish the skate half pipe at Huia Domain. FY26/27 - investigation and physical works	-	Maintaining current service levels	No further decisions are anticipated	2023WR3 - Our community	2023WR3.1 - Our parks and open spaces provide opportunities for recreation and enjoyment by the surrounding local communities, and a place for nature	P&CF: Project Delivery	Estimated project completion June 2027	ABS: Capex - Local Renewal	\$0	\$0	\$0	\$150,000	\$0	\$150,000	Continue	
6	27877	Koroī / Clayburn Reserve - develop neighbourhood park	Develop Koroī / Clayburn Reserve in consultation with the community. The Waitākere Ranges Play Network Provision Study (May 2021) recommends consideration for features such as courts or wheeled play in addition to a more standard playspace for children. FY22/23 to FY23/24 - investigation and design FY24/25 - physical works Funding Contributions: \$20,000 - LDI Capex \$611,598 - Growth \$56,613 - Local Renewal	-	Development of new park amenities to address network provision gaps enabling community access to a wider range of facilities and providing access to open space and recreational opportunities to meet the needs of new and future residents.	Concept design approval is required	2023WR3 - Our community	2023WR3.1 - Our parks and open spaces provide opportunities for recreation and enjoyment by the surrounding local communities, and a place for nature	P&CF: Project Delivery	Estimated project completion June 2025	ABS: Capex - Growth (regional), ABS: Capex - Local Renewal, LDI - Capex	\$53,094	\$601,139	\$0	\$0	\$0	\$654,233	Continue	



## Customer and Community Services Capex Work Programme 2024/2025 - Waitākere Ranges Local Board (Fairer Funding)

Index	ID	Activity Name	Activity Description	RAP	Activity Benefits	Further Decision Points for LB	LB Plan Outcome	LB Plan Objective	Lead Dept/Unit or CCO	Estimated completion date	Budget Source	2023/2024 FCast + prior years Actual	2024/2025	2025/2026	2026/2027	2027/2028+	Total Cost	WP Planning Status	Proposed change
7	45858	Les Waygood Park - development of ex-campground	Investigation, consultation, design and develop the ex-campground area at Les Waygood Park for recreation. □ □ FY26/27 - investigation and design □ □ FY27/28 - physical works	-	Park development to meet community needs	Concept design approval is required	2023WR3 - Our community	2023WR3.1 - Our parks and open spaces provide opportunities for recreation and enjoyment by the surrounding local communities, and a place for nature	P&CF: Project Delivery	Estimated project completion June 2028 □	LDI - Capex	\$0	\$0	\$0	\$30,000	\$100,000	\$130,000	New	
8	30256	Maea / Foothills Lane Reserve - renew playground and park furniture	Renew playground and park furniture in consultation with local residents. □ □ Plant several shade trees. □ □ FY26/27 - investigation and design □ □ FY27/28 - physical works □ □	-	Maintaining current service levels	No further decisions are anticipated	2023WR3 - Our community	2023WR3.1 - Our parks and open spaces provide opportunities for recreation and enjoyment by the surrounding local communities, and a place for nature	P&CF: Project Delivery	Estimated project completion June 2028	ABS: Capex - Local Renewal	\$0	\$0	\$0	\$10,000	\$140,000	\$150,000	Continue	
9	40054	Oratia Halls - renew components	Undertake minor renewal work on halls. □ □ FY25/26 - investigation and physical works	-	Maintaining current service levels	No further decisions are anticipated	2023WR3 - Our community	2023WR3.1 - Our parks and open spaces provide opportunities for recreation and enjoyment by the surrounding local communities, and a place for nature	P&CF: Project Delivery	Estimated project completion June 2026	ABS: Capex - Local Renewal	\$0	\$0	\$100,000	\$0	\$0	\$100,000	Continue	Bought forward one FY. Increased funding by \$30,000.
10	45846	Pānaki / Withers Reserve - relocate community pump track	Relocate the community built pump track from Kowhai Reserve to Pānaki / Withers Reserve. □ □ FY24/25 - investigation and physical works	-	Increased service levels to meet community needs	Concept design approval is required	2023WR1 - Our People	2023WR1.3 - People from our diverse communities are connected and feel as though they belong	P&CF: Project Delivery	Estimated project completion June 2025	LDI - Capex	\$0	\$30,000	\$0	\$0	\$0	\$30,000	New	
11	24425	Parrs Park - renew sports field irrigation system	Replace failing hydraulic irrigation system with a solenoid system. Separate water supply from toilets. □ □ FY25/26 - investigation and design □ □ FY26/27 - physical works □	-	Maintaining current service levels	No further decisions are anticipated	2023WR3 - Our community	2023WR3.1 - Our parks and open spaces provide opportunities for recreation and enjoyment by the surrounding local communities, and a place for nature	P&CF: Project Delivery	Estimated project completion June 2027	ABS: Capex - Local Renewal	\$0	\$0	\$10,000	\$405,000	\$0	\$415,000	Continue	
12	23999	Parrs Park - upgrade skate park □	Upgrade skate park to provide a wheeled play facility which caters for a wide age and ability range, in this brown fields growth area. □ □ FY24/25 - investigation and consultation □ □ FY25/26 - consenting and commence physical works □ □ FY26/27 to FY27/28 - complete physical works □ □ Funding Contributions: □ □ \$430,000 - LDI Capex □ □ \$400,000 - Growth □ □ \$400,000 - Local Renewal □	-	Development of new park amenities will address network provision gaps enabling community access to a wider range of facilities	No further decisions are anticipated □	2023WR3 - Our community	2023WR3.1 - Our parks and open spaces provide opportunities for recreation and enjoyment by the surrounding local communities, and a place for nature	P&CF: Project Delivery	Estimated project completion June 2028 □	ABS: Capex - Growth (regional), ABS: Capex - Local Renewal, LDI - Capex	\$0	\$0	\$80,000	\$250,000	\$900,000	\$1,230,000	Continue	
13	30279	Piha Domain - renew playground	Renew playground including edging. □ □ FY24/25 - investigation, design and physical works □ □	-	Maintaining current service levels	No further decisions are anticipated	2023WR3 - Our community	2023WR3.1 - Our parks and open spaces provide opportunities for recreation and enjoyment by the surrounding local communities, and a place for nature	P&CF: Project Delivery	Estimated project completion June 2025	ABS: Capex - Local Renewal	\$0	\$212,000	\$0	\$0	\$0	\$212,000	Change	

## Customer and Community Services Capex Work Programme 2024/2025 - Waitākere Ranges Local Board (Fairer Funding)

Index	ID	Activity Name	Activity Description	RAP	Activity Benefits	Further Decision Points for LB	LB Plan Outcome	LB Plan Objective	Lead Dept/Unit or CCO	Estimated completion date	Budget Source	2023/2024 FCast + prior years Actual	2024/2025	2025/2026	2026/2027	2027/2028+	Total Cost	WP Planning Status	Proposed change
14	23795	Robert Knox Memorial Park - renew playground and park furniture	Renew the playground and associated park furniture. FY25/26 - investigation and design FY26/27 - physical works	-	Maintaining current service levels	No further decisions are anticipated	2023WR3 - Our community	2023WR3.1 - Our parks and open spaces provide opportunities for recreation and enjoyment by the surrounding local communities, and a place for nature	P&CF: Project Delivery	Estimated project completion June 2027	ABS: Capex - Local Renewal	\$0	\$0	\$18,000	\$180,000	\$0	\$198,000	Change	Increased funding in FY26, by \$8,000 and FY27 by \$30,000.
15	37664	Sandys Parade - upgrade park amenities	In consultation with the local community, upgrade park amenities including vegetation and seating. Consider installation of a BBQ. FY24/25 - investigation and design FY25/26 - physical works Risk Adjusted Programme (RAP) project.	RAP Project	Increasing service levels to meet community needs	Concept design approval is required	2023WR3 - Our community	2023WR3.1 - Our parks and open spaces provide opportunities for recreation and enjoyment by the surrounding local communities, and a place for nature	P&CF: Project Delivery	Estimated project completion June 2026	LDI - Capex	\$0	\$10,000	\$85,000	\$0	\$0	\$95,000	New	
16	30285	Tangiwai Reserve - renew playground	Renew playground (swing set) at time of renewal and improve access as a part of the work. FY26/27 - investigation and physical works	-	Maintaining current service levels	No further decisions are anticipated	2023WR3 - Our community	2023WR3.1 - Our parks and open spaces provide opportunities for recreation and enjoyment by the surrounding local communities, and a place for nature	P&CF: Project Delivery	Estimated project completion June 2027	ABS: Capex - Local Renewal	\$0	\$0	\$0	\$60,000	\$0	\$60,000	New	
17	27881	Tautoru / Maywood Park - undertake park development	Consultation and design for park development i.e. trees, orchard, swing set and seat. FY24/25 - investigation and design FY25/26 - physical works Risk Adjusted Programme (RAP) project.	RAP Project	Development of new park amenities will address network provision gaps enabling community access to a wider range of facilities	Concept design approval is required	2023WR3 - Our community	2023WR3.1 - Our parks and open spaces provide opportunities for recreation and enjoyment by the surrounding local communities, and a place for nature	P&CF: Project Delivery	Estimated project completion June 2026	LDI - Capex	\$0	\$10,000	\$85,000	\$0	\$0	\$95,000	Continue	
18	23820	Te Henga Park - undertake park development	Develop park in consultation with the local community and iwi. The Waitākere Ranges Play Network Provision Study (May 2021) recommends consideration being given to cultural and natural play features. FY26/27 - consultation and design FY27/28 - physical works	-	Increased service levels to meet community needs	Concept design approval is required	2023WR3 - Our community	2023WR3.1 - Our parks and open spaces provide opportunities for recreation and enjoyment by the surrounding local communities, and a place for nature	P&CF: Project Delivery	Estimated project completion June 2028	LDI - Capex	\$0	\$0	\$0	\$15,000	\$215,000	\$230,000	Change	
19	28167	Te Kakau - develop cultural park features	Engage with locally based Māori youth to facilitate the design and installation of cultural features in Te Kakau. Implement concept design as funding allows. FY20/21 to FY22/23 - investigation and design (working with students) FY24/25 - physical works	-	Engaging with rangatahi to design and deliver desired outcomes provides opportunity for learning and understanding, ownership and improved open spaces for all	Concept design approval is required	2023WR3 - Our community	2023WR3.1 - Our parks and open spaces provide opportunities for recreation and enjoyment by the surrounding local communities, and a place for nature	P&CF: Project Delivery	Estimated project completion June 2025	LDI - Capex	\$53,369	\$303,566	\$0	\$0	\$0	\$356,935	Continue	
20	30304	Te Pātaka Kōrero o Titirangi / Titirangi Library - replace fixtures and furniture	Undertake minor refurbishment work and replace fixtures and furniture. FY25/26 - investigation and physical works	-	Maintaining current service levels	No further decisions are anticipated	2023WR3 - Our community	2023WR3.1 - Our parks and open spaces provide opportunities for recreation and enjoyment by the surrounding local communities, and a place for nature	P&CF: Project Delivery	Estimated project completion June 2026	ABS: Capex - Local Renewal	\$0	\$0	\$100,000	\$0	\$0	\$100,000	Continue	Bought forward one FY. Increased funding, by \$20,000.

**Customer and Community Services Capex Work Programme 2024/2025 - Waitākere Ranges Local Board (Fairer Funding)**

Index	ID	Activity Name	Activity Description	RAP	Activity Benefits	Further Decision Points for LB	LB Plan Outcome	LB Plan Objective	Lead Dept/Unit or CCO	Estimated completion date	Budget Source	2023/2024 FCast + prior years Actual	2024/2025	2025/2026	2026/2027	2027/2028+	Total Cost	WP Planning Status	Proposed change
21	33198	Titirangi Community House refurbish building interior	Refurbish the interior of the community house to meet the needs of users. FY25/26 - investigation and design FY26/27 - physical works	-	Maintaining current service levels	No further decisions are anticipated	2023WR3 - Our community	2023WR3.1 - Our parks and open spaces provide opportunities for recreation and enjoyment by the surrounding local communities, and a place for nature	P&CF: Project Delivery	Estimated project completion June 2027	ABS: Capex - Local Renewal	\$0	\$0	\$80,000	\$360,000	\$0	\$440,000	Continue	Bought forward one FY. Increased funding in FY27 by \$60,000.
22	30307	Titirangi War Memorial Hall & Library - refurbish exterior of building and storm water system	Replace cladding, structural timbers, windows, roofs and storm water system on the War Memorial Hall as outlined in the November 2021 destructive investigation report. Seismically strengthening the hall. Replace library exterior cladding and structural timbers where necessary. FY21/22 to FY23/24 - investigation and design FY24/25 to FY25/26 - physical works Risk Adjusted Programme (RAP) project. Funding contribution: ABS: Capex - Local Renewal - \$2,676,447. Funding contribution: Regional Seismic Strengthening - \$1,617,395.	RAP Project	Maintaining current service levels.	No further decisions are anticipated	2023WR3 - Our community	2023WR3.1 - Our parks and open spaces provide opportunities for recreation and enjoyment by the surrounding local communities, and a place for nature	P&CF: Project Delivery	Estimated project completion June 2026	ABS: Capex - Local Renewal, Seismic Strengthening	\$249,231	\$1,010,280	\$3,107,115	\$0	\$0	\$4,366,626	Continue	
23	24452	Titirangi War Memorial Park - renew amenity lighting	Renew park amenity lighting to today's standard, at Titirangi War Memorial Park. FY25/26 - investigation, design and physical works Risk Adjusted Programme (RAP) project - investigation and design only.	RAP Project	Maintaining current service levels	No further decisions are anticipated	2023WR3 - Our community	2023WR3.1 - Our parks and open spaces provide opportunities for recreation and enjoyment by the surrounding local communities, and a place for nature	P&CF: Project Delivery	Estimated project completion June 2026	ABS: Capex - Local Renewal	\$161	\$0	\$107,000	\$0	\$0	\$107,161	Continue	Bought forward one FY.
24	31785	Uru / Westview Reserve - undertake park development	Develop park in consultation with local residents. FY26/27 - investigation and consultation FY27/28 - design and consenting FY28/29 - physical works	-	Increased service levels to meet community needs	Concept design approval is required	2023WR3 - Our community	2023WR3.1 - Our parks and open spaces provide opportunities for recreation and enjoyment by the surrounding local communities, and a place for nature	P&CF: Project Delivery	Estimated project completion June 2029	LDI - Capex	\$0	\$0	\$0	\$25,000	\$450,000	\$475,000	Continue	
25	27890	Waima Reserve - renew playground and park amenities	Upgrade playground and park amenities at time of renewal, improving access as a part of the work. FY24/25 - investigation and design FY25/26 - physical works (Watercare mitigation funding for renewal \$155,000, LDI Capex contribution \$50,000) Risk Adjusted Programme (RAP) project.	RAP Project	Improved open spaces to meet community needs	No further decisions are anticipated	2023WR3 - Our community	2023WR3.1 - Our parks and open spaces provide opportunities for recreation and enjoyment by the surrounding local communities, and a place for nature	P&CF: Project Delivery	Estimated project completion June 2026	External Funding, LDI - Capex	\$0	\$155,000	\$75,000	\$0	\$0	\$230,000	Change	Increased LDI - Capex funding by \$25,000.

**Customer and Community Services Capex Work Programme 2024/2025 - Waitākere Ranges Local Board (Fairer Funding)**

Index	ID	Activity Name	Activity Description	RAP	Activity Benefits	Further Decision Points for LB	LB Plan Outcome	LB Plan Objective	Lead Dept/Unit or CCO	Estimated completion date	Budget Source	2023/2024 FCast + prior years Actual	2024/2025	2025/2026	2026/2027	2027/2028+	Total Cost	WP Planning Status	Proposed change
26	28611	Waitākere Ranges - install drinking fountains	Supply and install drinking fountains in identified parks and reserves. Stage 1 - Harold Moody Reserve, Titirangi Beach, Les Waygood Park (dependant on potable water supply), Titirangi War Memorial Park, Waima Reserve, Huia Domain Stage 2 - French Bay Esplanade Reserve, Huia Domain, Waitākere War Memorial Park, Singer Park.  FY26/27 to FY27/28 - investigation and physical works	-	Increased service levels to meet community needs	No further decisions are anticipated	2023WR3 - Our community	2023WR3.1 - Our parks and open spaces provide opportunities for recreation and enjoyment by the surrounding local communities, and a place for nature	P&CF: Project Delivery	Estimated project completion June 2028	LDI - Capex	\$0	\$0	\$0	\$100,000	\$100,000	\$200,000	New	Bought forward.
27	28612	Waitākere Ranges - provide built shade at suburb parks	Design and construct shade sails or shelters in alignment with recommendations in the Recreation Assessment report in identified parks/reserve.  FY25/26 to FY27/28 - investigation, design and physical works	-	Increased service levels to meet community needs	Concept design approval is required	2023WR3 - Our community	2023WR3.1 - Our parks and open spaces provide opportunities for recreation and enjoyment by the surrounding local communities, and a place for nature	P&CF: Project Delivery	Estimated project completion June 2028	LDI - Capex	\$0	\$0	\$5,000	\$66,107	\$120,000	\$191,107	Continue	
28	28613	Waitākere Ranges - provide natural shade in parks & street berms FY25-FY26	Plant suitable specimen trees at identified parks and streetscapes for shade provision, in accordance with the Urban Ngahere (Forest) Strategy.  FY24/25 to FY25/26 - investigation and physical works	-	Increased service levels to meet community needs	Concept design approval is required	2023WR2 - Our environment	2023WR2.3 - Protection and enhancement of urban tree cover	P&CF: Project Delivery	Estimated project completion June 2026	LDI - Capex	\$0	\$25,633	\$30,732	\$0	\$0	\$56,365	Continue	
29	36495	Waitākere Ranges - provide natural shade in parks & street berms FY27-FY28	Plant suitable specimen trees at identified parks and streetscapes for shade provision, in accordance with the Urban Ngahere (Forest) Strategy.  FY26/27 to FY27/28 - investigation and physical works	-	Increased service levels to meet community needs	No further decisions are anticipated	2023WR2 - Our environment	2023WR2.3 - Protection and enhancement of urban tree cover	P&CF: Project Delivery	Estimated project completion June 2028	LDI - Capex	\$0	\$0	\$0	\$30,000	\$30,000	\$60,000	New	
30	45836	Waitākere Ranges - refurbish amenity blocks	Refurbish amenity blocks, including improving accessibility for all users. Priority sites are: French Bay Esplanade and Titirangi Beach Reserve.  FY25/26 to FY26/27 - investigation and design FY26/27 to FY27/28 - physical work	-	Maintaining current service levels	No further decisions are anticipated	2023WR3 - Our community	2023WR3.1 - Our parks and open spaces provide opportunities for recreation and enjoyment by the surrounding local communities, and a place for nature	P&CF: Project Delivery	Estimated project completion June 2028	ABS: Capex - Local Renewal	\$0	\$0	\$125,852	\$170,000	\$230,000	\$525,852	New	Increased funding in FY26, by \$120,000, decreased in FY28, by \$120,000.
31	40052	Waitākere Ranges - refurbish community buildings	Refurbish or renew community buildings or components of buildings, including improving accessibility for all users. Building which require investigation are: West Coast Gallery and Piha Ex-Ministry of Education building, Laingholm Ex-Doctors Rooms and Laingholm Hall.  FY25/26 to FY26/27 - investigation and design FY26/27 to FY27/28 - physical work	-	Maintaining current service levels	No further decisions are anticipated	2023WR3 - Our community	2023WR3.1 - Our parks and open spaces provide opportunities for recreation and enjoyment by the surrounding local communities, and a place for nature	P&CF: Project Delivery	Estimated project completion June 2028	ABS: Capex - Local Renewal	\$0	\$0	\$124,773	\$818,990	\$450,000	\$1,393,763	New	Increased funding in FY26, by \$114,773 and in FY27, by \$423,138. Included two new buildings in the Activity Description.
32	36497	Waitākere Ranges - renew park / facilities fixtures and furniture FY25-FY27	Renew park and facilities fixtures and furniture. Priority sites are: Piha and Te Henga (rubbish bin renewal).  FY24/25 to FY26/27 - investigation and physical works Risk Adjusted Programme (RAP) project.	RAP Project	Maintaining current service levels	No further decisions are anticipated	2023WR3 - Our community	2023WR3.1 - Our parks and open spaces provide opportunities for recreation and enjoyment by the surrounding local communities, and a place for nature	P&CF: Project Delivery	Estimated project completion June 2027	ABS: Capex - Local Renewal	\$0	\$108,863	\$254,885	\$170,000	\$0	\$533,748	Continue	Increased FY26, by \$200,000.

**Customer and Community Services Capex Work Programme 2024/2025 - Waitākere Ranges Local Board (Fairer Funding)**

Index	ID	Activity Name	Activity Description	RAP	Activity Benefits	Further Decision Points for LB	LB Plan Outcome	LB Plan Objective	Lead Dept/Unit or CCO	Estimated completion date	Budget Source	2023/2024 FCast + prior years Actual	2024/2025	2025/2026	2026/2027	2027/2028+	Total Cost	WP Planning Status	Proposed change
33	36496	Waitākere Ranges - renew park / facilities signage FY27-FY28	Renew community facilities and park signage - sites to be confirmed, incorporating Te Kete Rukuruku.  FY25/26 to FY27/28 - investigation and physical works	-	Maintaining current service levels	No further decisions are anticipated	2023WR3 - Our community	2023WR3.1 - Our parks and open spaces provide opportunities for recreation and enjoyment by the surrounding local communities, and a place for nature	P&CF: Project Delivery	Estimated project completion June 2028	ABS: Capex - Local Renewal	\$0	\$0	\$55,000	\$65,000	\$45,000	\$165,000	Change	Re-established funding in FY26.
34	31986	Waitākere Ranges - renew park driveways and carparks	Renew park driveways and carparks. □ Priority sites are: Parrs Park, Titirangi War Memorial Park and Piha Domain. □ □ FY25/26 to FY26/27 - investigation and design □ FY26/27 to FY27/28 - physical works □ Risk Adjusted Programme (RAP) project - investigation and design only.	RAP Project	Maintaining current service levels	No further decisions are anticipated	2023WR3 - Our community	2023WR3.1 - Our parks and open spaces provide opportunities for recreation and enjoyment by the surrounding local communities, and a place for nature	P&CF: Project Delivery	Estimated project completion June 2028	ABS: Capex - Local Renewal	\$2,971	\$0	\$170,000	\$530,000	\$417,000	\$1,117,000	Continue	Increased funding in FY26 by \$100,000.
35	28641	Waitākere Ranges - renew park structures FY26-FY28	Renew park structures such as retaining walls. □ Priority sites are: Duck Park, Titirangi War Memorial Hall and Opanuku Marginal Strip. □ □ FY25/26 to FY26/27 - investigation and design □ FY26/27 to FY27/28 - physical works □ Risk Adjusted Programme (RAP) project - investigation and design only. □ □	RAP Project	Maintaining current service levels	No further decisions are anticipated □	2023WR3 - Our community	2023WR3.1 - Our parks and open spaces provide opportunities for recreation and enjoyment by the surrounding local communities, and a place for nature	P&CF: Project Delivery	Estimated project completion June 2028	ABS: Capex - Local Renewal	\$340	\$0	\$130,000	\$344,902	\$300,000	\$774,902	Continue	Increased funding in FY26 by \$100,000.
36	28351	Waitākere Ranges - renew park walkways & paths FY25-FY27	Renew walkway and paths. □ Priority sites are: Mt Atkinson Park and Davies Bay. □ Working in alignment with the Community Facilities Strategic Projects Unit to consider issues of Kauri Dieback Disease. □ □ FY24/25 - investigation and design □ FY25/26 to FY26/27 - physical works □ Risk Adjusted Programme (RAP) project. □ □ □ □	RAP Project	Maintaining current service levels	No further decisions are anticipated	2023WR3 - Our community	2023WR3.1 - Our parks and open spaces provide opportunities for recreation and enjoyment by the surrounding local communities, and a place for nature	P&CF: Project Delivery	Estimated project completion June 2027 □	ABS: Capex - Local Renewal	\$0	\$106,623	\$250,000	\$345,000	\$0	\$701,623	Continue	Increased funding in FY26 by \$150,000.
37	40057	Waitākere Ranges - renew park walkways & paths FY27-FY29	Renew walkway and paths. Sites to be confirmed. Working in alignment with the Community Facilities Strategic Projects Unit to consider issues of Kauri Dieback Disease. □ □ FY26/27 to FY27/28 - investigation and design □ FY27/28 to FY28/29 - physical works	-	Maintaining current service levels	No further decisions are anticipated	2023WR3 - Our community	2023WR3.1 - Our parks and open spaces provide opportunities for recreation and enjoyment by the surrounding local communities, and a place for nature	P&CF: Project Delivery	Estimated project completion June 2029	ABS: Capex - Local Renewal	\$0	\$0	\$0	\$25,000	\$400,000	\$425,000	New	
38	45835	Waitākere Ranges - renew playground components	Renew playground components such as single play items, edging and safety surfacing. □ Priority sites are: Titirangi Beach Reserve and Olive Grove. □ □ FY25/26 to FY26/27 - investigation and physical works □ Risk Adjusted Programme (RAP) project. □	-	Maintaining current service levels	No further decisions are anticipated	2023WR3 - Our community	2023WR3.1 - Our parks and open spaces provide opportunities for recreation and enjoyment by the surrounding local communities, and a place for nature	P&CF: Project Delivery	Estimated project completion June 2027	ABS: Capex - Local Renewal	\$0	\$0	\$73,000	\$190,000	\$0	\$263,000	New	

**Customer and Community Services Capex Work Programme 2024/2025 - Waitākere Ranges Local Board (Fairer Funding)**

Index	ID	Activity Name	Activity Description	RAP	Activity Benefits	Further Decision Points for LB	LB Plan Outcome	LB Plan Objective	Lead Dept/Unit or CCO	Estimated completion date	Budget Source	2023/2024 FCast + prior years Actual	2024/2025	2025/2026	2026/2027	2027/2028+	Total Cost	WP Planning Status	Proposed change	
39	30589	Waitākere Ranges - renew/refurbish building roofs & associated assets	Renew/refurbish roofs and associated assets on community buildings, such as Glen Eden Community House, Ceramco Function Centre and Titirangi Kindergarten. □ □ FY23/24 to FY24/25 - investigation and physical works □ □	-	Maintaining current service levels	No further decisions are anticipated	2023WR3 - Our community	2023WR3.1 - Our parks and open spaces provide opportunities for recreation and enjoyment by the surrounding local communities, and a place for nature	P&CF: Project Delivery	Estimated project completion June 2025	ABS: Capex - Local Renewal	\$93,948	\$17,336	\$0	\$0	\$0	\$111,284	Continue		
40	45845	Waitipu - develop ex-quarry	Plan, consult, design and undertake development of the old quarry site. □ □ FY25/26 to FY26/27 - investigation, consultation and design □ FY26/27 to FY27/28 - physical works	-	Increased service levels to meet community needs	Concept design approval is required	2023WR3 - Our community	2023WR3.1 - Our parks and open spaces provide opportunities for recreation and enjoyment by the surrounding local communities, and a place for nature	P&CF: Project Delivery	Estimated project completion June 2028	LDI - Capex	\$0	\$0	\$30,000	\$150,000	\$160,000	\$340,000	New	Increased funding in FY26 by \$15,000 and FY27 by \$20,000.	
41	31787	Waitipu / Te Henga Quarry - renew track safety features and pedestrian bridge	Renew pedestrian bridge which links tracks at the top of the waterfall. Install track safety features. Design to a 'Short Walk' standard. □ □ FY24/25 to FY26/27 - investigation, design and physical works □ Risk Adjusted Programme (RAP) project. □	RAP Project	Maintaining current service levels	No further decisions are anticipated	2023WR3 - Our community	2023WR3.1 - Our parks and open spaces provide opportunities for recreation and enjoyment by the surrounding local communities, and a place for nature	P&CF: Project Delivery	Estimated project completion June 2027	ABS: Capex - Local Renewal	\$0	\$20,000	\$140,000	\$250,000	\$0	\$410,000	Continue	Increased funding in FY26 by \$40,000.	
42	30333	Wood Bay Reserve - renew playground	Renew playground (swing set). □ □ FY26/27 - investigation and physical works □	-	Maintaining current service levels □	No further decisions are anticipated □	2023WR3 - Our community	2023WR3.1 - Our parks and open spaces provide opportunities for recreation and enjoyment by the surrounding local communities, and a place for nature	P&CF: Project Delivery	Estimated project completion June 2027	ABS: Capex - Local Renewal	\$0	\$0	\$0	\$30,000	\$0	\$30,000	Continue		
												\$500,913	\$2,617,440	\$5,704,357	\$4,799,999	\$4,057,000	\$17,676,398			

## Auckland Emergency Management Work Programme 2024/2025 - Waitākere Ranges Local Board

ID	Activity Name	Activity Description	Activity Benefits	Further Decision Points for LB	LB Plan Outcome	LB Plan Objective	Lead Dept/Unit or CCO	Delivery Year(s)	Budget Source	2024/2025	WP Planning Status
3979	Waitākere Ranges Local Board, community and business emergency response plans and resilience programme	Increase disaster awareness, adopt readiness and response plans and implementation after approval in partnership with mana whenua, and in collaboration with the Local Board and the community.	Ensuring people within the Local Board rohe understand their hazard risks, have mitigated these risks, are prepared and have strong social networks to ensure they are better able to cope and support each other during an emergency and recover faster.		2020WR4 - Our communities are resilient and strong	2020WR4.1 - Communities take action to improve their resilience	GOV: Auckland Emergency Management	2024/2025	Regional	0	New

## Customer and Community Services Opex Work Programme 2024/2025 - Waitākere Ranges Local Board

ID	Activity Name	Activity Description	Activity Benefits	Further Decision Points for LB	LB Plan Outcome	LB Plan Objective	Lead Dept/Unit or CCO	Delivery Year(s)	Budget Source	2024/2025	WP Planning Status
432	Operational expenditure for Lopdell Precinct	Fund the Lopdell Trust to provide gallery and office space for community arts partners and deliver a programme of community arts activity and events at the Precinct with a programme budget of \$18,000.	<p>Arts partners can leverage activities, marketing and shared experiences.</p> <p>The community can experience and engage with visual and performing arts in Titirangi.</p> <p>Local communities can lead their own arts and culture initiatives.</p> <p>Visitors are attracted to Lopdell Precinct and it is well maintained.</p> <p>The community can participate in events and programmes.</p> <p>The relationship between the Lopdell Trust and Auckland Council is well serviced.</p>	No further decisions.	2023WR3 - Our community	2023WR3.3 - A network of vibrant arts and culture organisations, facilities and events that enliven the west	CCS: Connected Communities – Community Delivery	2024/2025	ABS: Opex	153,166	Continue
433	Operational grant for Te Uru Waitākere Contemporary Gallery	<p>Fund Te Uru Waitakere Contemporary Gallery Inc to operate Te Uru as a destination arts facility that develops and attracts visual arts exhibitions of local and regional significance.</p> <p>The budgets for each year are uninflated, and are subject to annual inflation adjustment.</p>	<p>Local people can access and participate in visual arts programmes for all levels of experience that reflect the cultural diversity of the community and promote a sense of local pride, identity and connectedness.</p> <p>Local emergent and professional artists can exhibit their work and access opportunities for professional and creative development.</p> <p>The community can network and collaborate with arts and culture stakeholders to support a vibrant and sustainable creative industry.</p>	No further decisions.	2023WR3 - Our community	2023WR3.3 - A network of vibrant arts and culture organisations, facilities and events that enliven the west	CCS: Connected Communities – Community Delivery	2024/2025	ABS: Opex	699,664	Continue



## Customer and Community Services Opex Work Programme 2024/2025 - Waitākere Ranges Local Board

ID	Activity Name	Activity Description	Activity Benefits	Further Decision Points for LB	LB Plan Outcome	LB Plan Objective	Lead Dept/Unit or CCO	Delivery Year(s)	Budget Source	2024/2025	WP Planning Status
434	Operational grant for McCahon House	<p>Fund the McCahon House Trust to operate the McCahon House and provide artist residencies and exhibitions.</p> <p>The budgets for each year are uninflated, and are subject to annual inflation adjustment.</p>	<p>Connections can be made with other artist residence centres and educational organisations nationally and internationally to raise the profile and reputation the McCahon House.</p> <p>The residency and museum are maintained as an important cultural heritage site.</p> <p>Local heritage is protected and promoted, fostering a sense of local pride and identity.</p> <p>Information is developed and collected that relates to the life and work of Colin McCahon, the history of the residency and other resources.</p> <p>The volunteer programme provides the community with the opportunity to connect and engage with each other.</p>	No further decisions.	2023WR3 - Our community	2023WR3.3 - A network of vibrant arts and culture organisations, facilities and events that enliven the west	CCS: Connected Communities – Community Delivery	2024/2025	ABS: Opex	23,562	Continue
435	Operational grant for West Coast Gallery	<p>Fund West Coast Community Arts Trust to operate the West Coast Gallery and deliver exhibitions and public programmes.</p> <p>The budgets for each year are uninflated, and are subject to annual inflation adjustment.</p>	<p>Local people can access and participate in visual arts programmes that reflect the cultural diversity of the community and support a sense of local pride, connectedness and identity.</p> <p>Local emergent and professional artists can exhibit their work and access opportunities for professional and creative development to support them to be sustainable.</p> <p>The community can network and collaborate with arts and culture stakeholders to support a vibrant and sustainable creative industry.</p>	No further decisions.	2023WR3 - Our community	2023WR3.3 - A network of vibrant arts and culture organisations, facilities and events that enliven the west	CCS: Connected Communities – Community Delivery	2024/2025	ABS: Opex	16,315	Continue

## Customer and Community Services Opex Work Programme 2024/2025 - Waitākere Ranges Local Board

ID	Activity Name	Activity Description	Activity Benefits	Further Decision Points for LB	LB Plan Outcome	LB Plan Objective	Lead Dept/Unit or CCO	Delivery Year(s)	Budget Source	2024/2025	WP Planning Status
436	Operational grant for The Upstairs Gallery	<p>Fund Titirangi Community Arts Council to operate The Upstairs Gallery and deliver exhibition opportunities, workshops, talks and resources to the community.</p> <p>The budgets for each year are uninflated, and are subject to annual inflation adjustment.</p> <p>Budget for FY24/25 includes ABS \$52,729 LDI \$10,000</p> <p>LDI budget to support expansion of the Upstairs Gallery programme, responding to local community requests for additional exhibition opportunities, events, and participatory workshops.</p>	<p>Local artists and crafts people can access development opportunities to support creative entrepreneurship and sustainable practice.</p> <p>Local people can access and participate in programmes that reflect the cultural diversity of the community and support a sense of local pride, connectedness and identity.</p> <p>Visitors of diverse audiences are attracted to Titirangi.</p> <p>The community can network and collaborate with arts and culture stakeholders to support a vibrant and sustainable creative industry.</p>	No further decisions.	2023WR3 - Our community	2023WR3.3 - A network of vibrant arts and culture organisations, facilities and events that enliven the west	CCS: Connected Communities – Arts, Culture & Heritage	2024/2025	ABS: Opex;#LDI: Opex	62,729	Change
437	Community arts programmes Open Studios Waitākere	Fund a contractor to deliver Open Studios Waitākere.	<p>The local creative industry is visible, attracts visitors to the area and supports economic development opportunities for local artists and creative industries.</p> <p>Local artists and crafts people can participate in capability building workshops, have opportunities to connect with each other and grow their online presence.</p>		2023WR3 - Our community	2023WR3.3 - A network of vibrant arts and culture organisations, facilities and events that enliven the west	CCS: Connected Communities – Community Delivery	2024/2025	LDI: Opex	25,000	Continue
438	Community arts programmes- Māori arts and culture	Develop and support Māori arts and culture activities and initiatives to be delivered in Waitākere. Ranges that activate local spaces and engage the community as participants and audience, such as an event for Matariki.	<p>Support local projects and activities that contribute towards Māori educational, cultural, leadership, and employment outcomes.</p> <p>Celebrate Māori and their culture as a point of difference</p> <p>Arts and culture is celebrated in the local area through creative activations of everyday spaces to support a sense of local identity and pride.</p> <p>The community can learn, participate in and experience creative arts.</p>		2023WR3 - Our community	2023WR3.3 - A network of vibrant arts and culture organisations, facilities and events that enliven the west	CCS: Connected Communities – Community Delivery	2024/2025	LDI: Opex	15,000	Continue
439	Establishment grant for Shadbolt House	Fund the establishment and set-up costs of a writers' centre at Shadbolt House, 35 Arapito Road. Budget includes ABS funding of \$10,531 and LDI funding of \$10,000	<p>Heritage assets are preserved, protected and celebrated.</p> <p>The community has access to spaces for arts activity.</p>		2023WR4 - Our places	2023WR4.3 - The heritage of our people, places and buildings is recognised and valued	CCS: Connected Communities – Community Delivery	2024/2025	ABS: Opex;#LDI: Opex	20,531	Continue

## Customer and Community Services Opex Work Programme 2024/2025 - Waitākere Ranges Local Board

ID	Activity Name	Activity Description	Activity Benefits	Further Decision Points for LB	LB Plan Outcome	LB Plan Objective	Lead Dept/Unit or CCO	Delivery Year(s)	Budget Source	2024/2025	WP Planning Status
440	Festival grant for Going West Festival	Contribution to the Going West Trust to maintain their significant collection and the archives of the Going West Festival, and to maintain the operation of the trust whilst they work through a transition phase from their old festival delivery model through to a new one.	<p>The community has the opportunity to access a significant archive of literary material.</p> <p>Māori arts are promoted through access to Māori writers and artists.</p> <p>The online programme celebrates the cultural diversity of the local community to support a sense of connectedness, identity and local pride.</p>		2023WR3 - Our community	2023WR3.3 - A network of vibrant arts and culture organisations, facilities and events that enliven the west	CCS: Connected Communities – Community Delivery	2024/2025	LDI: Opex	6,000	Change
442	Operational grant for Glen Eden Playhouse Theatre	<p>Fund Glen Eden Playhouse Trust to operate the Glen Eden Playhouse Theatre.</p> <p>The budgets for each year are uninflated, and are subject to annual inflation adjustment.</p>	<p>The built heritage of the Glen Eden Town centre is protected.</p> <p>The Glen Eden Playhouse Theatre is fit for purpose and accessible for the community to use.</p>	No further decisions.	2023WR3 - Our community	2023WR3.3 - A network of vibrant arts and culture organisations, facilities and events that enliven the west	CCS: Connected Communities – Community Delivery	2024/2025	ABS: Opex	19,694	Continue
443	Build Capacity: Community Waitākere Resource Centre	Fund Community Waitākere's Resource Centre to deliver capacity and capability building activities for community groups including: training opportunities, networking events (including with West Auckland Together/Collaborative Marketplace, Māori and Pasifika leadership groups, Hoani Waititi marae and other West Auckland Māori organisations), e-noticeboard, publications, meeting rooms and administration support.	<p>Community groups develop skills to organise themselves, collaborate with others, and plan, lead and deliver projects.</p> <p>Community groups have opportunities to meet and network with other organisations, including with Hoani Waititi Marae and other Māori organisations.</p> <p>Community groups have easy access to new information and resources from Auckland Council, service providers and funders.</p> <p>Community groups have access to meeting rooms, desk space and administrative support at the Resource Centre.</p>	No further decisions.	2023WR1 - Our people	2023WR1.3 - People from our diverse communities are connected and feel as though they belong	CCS: Connected Communities – Community Delivery	2024/2025	LDI: Opex	30,000	Continue
444	Pasifika youth leadership programme- Waitākere Ranges	Fund an organisation to support the coordination and delivery of a Pasifika youth leadership programme.	<p>Local Pasifika young people can access opportunities to develop their leadership skills and empower other young people in their community.</p> <p>Young Pasifika people and their needs and aspirations are more visible.</p>		2023WR1 - Our people	2023WR1.3 - People from our diverse communities are connected and feel as though they belong	CCS: Connected Communities – Community Delivery	2024/2025	LDI: Opex	15,000	Continue

## Customer and Community Services Opex Work Programme 2024/2025 - Waitākere Ranges Local Board

ID	Activity Name	Activity Description	Activity Benefits	Further Decision Points for LB	LB Plan Outcome	LB Plan Objective	Lead Dept/Unit or CCO	Delivery Year(s)	Budget Source	2024/2025	WP Planning Status
445	Youth: Build Capacity Waitākere Ranges	Develop and fund a youth voice initiative that supports and builds capacity of young people in Waitākere Ranges to lead and create positive solutions in local communities.	The Local Board are informed on the issues for local young people Increased wellbeing and community leadership skills for young people. Engaging and empowering young people will foster a sense of ownership and investment in the community, leading to Increased participation in civic life, including voting and community events.	No further decisions.	2023WR1 - Our people	2023WR1.3 - People from our diverse communities are connected and feel as though they belong	CCS: Connected Communities – Community Delivery	2024/2025	LDI: Opex	20,000	Change
446	Placemaking and Capacity Building: Urban neighbourhoods	Partner with community organisations to build the capacity of people in local neighbourhoods to lead activities that build community connections, celebrate their cultural heritage and diversity, and build community resilience and self-reliance.	Residents develop skills to organise, plan, lead and deliver activities that help build community resilience.  Residents know where to access information and resources from council and other service providers.  Residents understand the role and functions of council, engage in council activities, and can influence the things that are important to them in the community.	No further decisions.	2023WR1 - Our people	2023WR1.2 - To enhance the health, wellbeing and resilience of local communities	CCS: Connected Communities – Community Delivery	2024/2025	LDI: Opex	55,000	Continue
447	Placemaking: Neighbours Day Waitākere Ranges	Partner with community providers to support the organisation of Neighbours Day activities by residents in local neighbourhoods.	Residents have access to resources to organise street and neighbourhood events.  Neighbours have opportunities to connect with each other, and local events help build resilience, perception of safety, identity and pride in the community.  The community engage in local matters and are aware of the role of the local board and council.	No further decisions.	2023WR1 - Our people	2023WR1.2 - To enhance the health, wellbeing and resilience of local communities	CCS: Connected Communities – Community Delivery	2024/2025	LDI: Opex	6,500	Continue
448	Māori Responsiveness: Kaiwhakaawe - Māori broker and Māori-led engagement	Support the Kaiwhakaawe - Māori broker.  Contribute funding to the Kaiwhakaawe - Māori broker role based at Hoani Waititi Marae, and to activities that build relationships across West Auckland Māori communities to strengthen relationships with Māori, respond to key aspirations and deliver Māori outcomes.  Implement the Māori Responsiveness Plan Waitākere ki Tua as per the focus areas of Rangatiratanga, Taonga tukuiho and Rangatira mo apopo.  Funding supports the Kaiwhakaawe role (\$35,000).	The local board deliver outcomes from Waitākere ki Tua.  The local board builds stronger relationships with Māori and supports relationship across Māori communities.  Māori can participate in local decision making.  Local Māori aspirations and priorities are understood and responded to.	No further decisions.	2023WR1 - Our people	2023WR1.1 - Strong and productive mana whenua and mataawaka relationships	CCS: Connected Communities – Community Delivery	2024/2025	LDI: Opex	35,000	Continue

## Customer and Community Services Opex Work Programme 2024/2025 - Waitākere Ranges Local Board

ID	Activity Name	Activity Description	Activity Benefits	Further Decision Points for LB	LB Plan Outcome	LB Plan Objective	Lead Dept/Unit or CCO	Delivery Year(s)	Budget Source	2024/2025	WP Planning Status
449	Local implementation of Ngā Hapori Momoho (Thriving Communities strategic action plan)- Waitākere Ranges	Local Board contribution towards the capability required to deliver community development activities and outcomes.	The local board is able to realise its community outcome objectives and deliver on Ngā Hapori Momoho (Thriving Communities strategic action plan).	No further decisions.	2023WR1 - Our people	2023WR1.2 - To enhance the health, wellbeing and resilience of local communities	CCS: Connected Communities – Community Delivery	2024/2025	LDI: Opex	114,600	Continue
450	Access to community places Waitākere Ranges	<p>Provide fair, easy and affordable access to a safe and welcoming venues.</p> <p>Council delivery: Ceramco Park Function Centre Titirangi War Memorial Hall.</p> <p>Community delivery and supported by council through a contract for service/funding agreement: Barnett Hall. Glen Eden Community and Recreation War Memorial Hall Glen Eden Community House Hoani Waititi Marae Huia Hall Laingholm Village Hall Oratia Settlers Hall Oratia Small Hall Paturua Bay Hall Titirangi Community House Waiatarua Community Hall Waitakere Domain Hall Waitakere Township Hall</p> <p>The fees and charges schedule was adopted in the Local Board Agreement.</p>	<p>Supports access along with the coordination of activation and activities.</p> <p>Ensures there are a wide range of activities meeting the wider community needs and interests.</p> <p>Staffed hours are provided to enable excellent customer and community interaction and service.</p>		2023WR3 - Our community	2023WR3.4 - Our libraries and facilities provide engaging spaces at the heart of the community	CCS: Connected Communities – Community Delivery	2024/2025	ABS: Opex	0	Continue

## Customer and Community Services Opex Work Programme 2024/2025 - Waitākere Ranges Local Board

ID	Activity Name	Activity Description	Activity Benefits	Further Decision Points for LB	LB Plan Outcome	LB Plan Objective	Lead Dept/Unit or CCO	Delivery Year(s)	Budget Source	2024/2025	WP Planning Status
451	Capacity building: Community Resilience	<p>Work with Auckland Recovery office, AEM, other Council departments and external agencies to engage with local communities and support their recovery from extreme weather events.</p> <p>Fund the development or review of local Community Resilience plans and support access to information and advice to assist communities with this work.</p> <p>Fund initiatives that help build local communities' social resilience and address issues relating to housing vulnerability and homelessness.</p> <p>Work with community partners, such as Kai West, to develop secure local food systems that meet the needs of the diverse communities in the Waitakere Ranges local board area.</p> <p>Fund initiatives that increase digital literacy and enhance personal resilience, particularly in times of unexpected disasters.</p>	<p>Residents in the Waitakere Ranges local board area are well informed and able to respond to unexpected disasters in their local community.</p> <p>Communities are supported to undertake Community Resilience planning to develop an appropriate plan of action, especially those in coastal areas.</p> <p>Communities who have already developed Community Resilience plans will be supported to review and redraft their plans as required.</p> <p>Locally led initiatives create greater connection and security in local communities.</p> <p>Local food systems are able to provide secure access to food for those in need.</p> <p>People in the Waitakere Ranges local board are able to readily improve their digital literacy and develop their personal resilience</p>	No further decisions.	2023WR1 - Our people	2023WR1.2 - To enhance the health, wellbeing and resilience of local communities	CCS: Connected Communities – Community Delivery	2024/2025	LDI: Opex	35,000	Continue
452	Placemaking: Glen Eden activation programme	<p>Develop in collaboration with community and key stakeholders a Glen Eden Community-led Plan. The Plan will design and implement a programme of community-led activities, to foster creativity, enhance wellbeing, community safety, arts, music, and diverse culture to help make Glen Eden a safe, attractive, welcoming, and inclusive place.</p>	<p>Local people have increased opportunities to enjoy themselves, connect and interact in Glen Eden town center.</p> <p>The community know where to go for information and services, feel engaged and participate in local activities.</p> <p>New residents and visitors are welcomed into the community.</p>	No further decisions.	2023WR4 - Our places	2023WR4.1 - Thriving, sustainable villages that people take pride in	CCS: Connected Communities – Community Delivery	2024/2025	LDI: Opex	20,000	Continue
453	Hoani Waititi Marae	<p>Fund Hoani Waititi Marae Trust (\$76,586.37) year four of five year term to operate and maintain Hoani Waititi Marae to be open and available for public use, commencing 1 July 2021 and terminating on 30 June 2026.</p> <p>Operational funding amount to be adjusted annually in accordance with Auckland Council's agreed inflationary mechanism once confirmed.</p>	<p>The Marae is maintained to a safe standard, open and available to the community for public use. Providing services that are align to local board plan, aspirations and outcomes, including: - Local communities feel good about where they live; Our communities celebrate their distinct identities and live, work and play together.</p>	No further decisions.	2023WR1 - Our people	2023WR1.1 - Strong and productive mana whenua and mataawaka relationships	CCS: Connected Communities – Community Delivery	2024/2025	ABS: Opex	76,586	Continue

## Customer and Community Services Opex Work Programme 2024/2025 - Waitākere Ranges Local Board

ID	Activity Name	Activity Description	Activity Benefits	Further Decision Points for LB	LB Plan Outcome	LB Plan Objective	Lead Dept/Unit or CCO	Delivery Year(s)	Budget Source	2024/2025	WP Planning Status
454	Activation of community led venue partners Waitākere Ranges	Community delivery and supported by council through a contract for service agreement: Glen Eden Community House; year three of five year term expires 30 June 2027 - (\$44,675.56 pa) Titirangi Community House; year three of five year term expires 30 June 2027 - (\$44,675.56 pa)  Operational management fee amount to be adjusted annually in accordance with Auckland Council's agreed inflationary mechanism once confirmed.	Supports access along with the coordination of activation and activities.  Ensures there are a wide range of activities meeting the wider community needs and interests.  Provides staffed hours to enable excellent customer and community interaction and service.	No further decisions.	2023WR3 - Our community	2023WR3.4 - Our libraries and facilities provide engaging spaces at the heart of the community	CCS: Connected Communities – Community Delivery	2024/2025	ABS: Opex	89,351	Continue
455	Community halls partnership fund	Fund the Community Halls to provide safe and accessible facilities to meet the needs of the community for the years 2024/2025-2026/2027: Glen Eden Community and Recreation Centre War Memorial Hall - \$3,000 Laingholm Village Hall - \$3,000 Oratia Settlers Hall - \$3,000 Oratia Small Hall - \$3,000 Waiatarua Hall - \$3,000 Waitākere Domain Hall - \$3,000 Barnett Hall - \$6,000 Huia Hall - \$6,000 Waitākere Township Hall - \$6,000 Paturua Bay Hall - \$6,000.	Local people can connect and participate in community activities.  Local community halls meet the needs of the community.		2023WR3 - Our community	2023WR3.4 - Our libraries and facilities provide engaging spaces at the heart of the community	CCS: Connected Communities – Community Delivery	2024/2025	LDI: Opex	42,000	Continue
456	Top up for funding agreement - Glen Eden and Titirangi Community Houses	Provide top up funding to support the day to day running of centres, to provide ongoing support to their communities and to ensure staff are paid the living wage: Glen Eden Community House - \$12,500 Titirangi Community House - \$12,500	Supports access along with the coordination of activation and activities.  Ensures there are a wide range of activities meeting the wider community needs and interests.  Provides staffed hours to enable excellent customer and community interaction and service.		2023WR3 - Our community	2023WR3.4 - Our libraries and facilities provide engaging spaces at the heart of the community	CCS: Connected Communities – Community Delivery	2024/2025	LDI: Opex	25,000	Continue
457	Citizenship ceremonies Waitākere Ranges	Deliver an annual programme of citizenship ceremonies.	Local people can recognise and celebrate important occasions and build social cohesion through welcoming new citizens.	No further decisions.	2023WR1 - Our people	2023WR1.3 - People from our diverse communities are connected and feel as though they belong	CCS: RSS – Events	2024/2025	ABS: Opex	0	Continue
458	Anzac services Waitākere Ranges	Deliver and/or support Anzac services and parades.	Local people can remember fallen servicemen and women through a meaningful and respectful commemoration.	No further decisions.	2023WR1 - Our people	2023WR1.3 - People from our diverse communities are connected and feel as though they belong	CCS: RSS – Events	2024/2025	LDI: Opex	75,180	Continue

## Customer and Community Services Opex Work Programme 2024/2025 - Waitākere Ranges Local Board

ID	Activity Name	Activity Description	Activity Benefits	Further Decision Points for LB	LB Plan Outcome	LB Plan Objective	Lead Dept/Unit or CCO	Delivery Year(s)	Budget Source	2024/2025	WP Planning Status
460	Māori Responsiveness: Mana whenua engagement	Support and fund regular operational hui with Te Kawerau Iwi Tiaki Trust to strengthen relationships with iwi, respond to key aspirations and deliver Māori outcomes.  Support and fund involvement of mana whenua in community-led projects to deliver Māori outcomes in areas of priorities for iwi.  Support and fund community-led projects, activities and events which deliver on Māori outcomes and the intent of Waitākere ki Tua  Support where needed iwi-led projects such as the development of a Marae at Te Henga.	The local board meets its statutory obligations to iwi and builds stronger relationships with iwi.  Iwi participate in local decision making.  Mana whenua aspirations and priorities are understood and responded to.  Kaupapa Māori organisations are supported to deliver community-led projects, activities and events in the local area	No further decisions.	2023WR1 - Our people	2023WR1.1 - Strong and productive mana whenua and mataawaka relationships	CCS: Connected Communities – Community Delivery	2024/2025	LDI: Opex	10,000	Continue
461	Event partnership fund Waitākere Ranges	Funding to support community events through a non-contestable process. This provides an opportunity for the local board to work in partnership with local event organisers, by providing core funding for up to three years for selected events: Arataki Kids Day (Friends of Arataki) - \$3,000, Waitangi at Waititi (Te Whanau O Waipareira Trust) - \$10,000, Wheels out West (Glen Eden Business Association) - \$10,000 and Te Henga Community Day (Te Henga Community Group) \$2,500	Local people can attend free events that reflect the diversity and needs of the community.  Local heritage is protected and celebrated.	No further decisions	2023WR1 - Our people	2023WR3.3 - A network of vibrant arts and culture organisations, facilities and events that enliven the west	CCS: RSS – Events	2024/2025	LDI: Opex	25,500	Change
463	Community grants Waitākere Ranges	Community groups receive funding through a contestable grants process.	Council can develop relationships with community groups and identify opportunities for collaboration.  Communities can influence the things they care about and are encouraged to participate.  Community activities are supported at a local level and seed funding can be provided community development initiatives.	The local board will approve the applicants to receive funding.	2023WR1 - Our people	2023WR1.3 - People from our diverse communities are connected and feel as though they belong	CCS: Grants	2021/2022; 2022/2023; 2023/2024; 2024/2025	LDI: Opex	90,898	Change
646	Waitākere Ranges Ecovolunteer ecological and environmental programme	This is an ongoing programme to support community and volunteer ecological and environmental initiatives. This includes: community planting, annual pest plant and animal control, local park clean ups, stream and coastal erosion management, water quality improvement, and community environmental education and events.	<ul style="list-style-type: none"> <li>•Increase the number of people and groups involved in active protection of the biodiversity values across the local board area – on private and public land</li> <li>•Greater alignment and co-operation of community conservation activities</li> <li>•Number of traps and bait station under active management in the area</li> <li>•Reduction in pest plants</li> <li>•Increase in number of trees planted.</li> </ul>	No further decisions anticipated	2023WR2 - Our environment	2023WR2.2 - Natural areas on parks are protected restored, and enhanced	CCS: PCF – Specialist Operations	2024/2025	LDI: Opex	46,440	Continue



## Customer and Community Services Opex Work Programme 2024/2025 - Waitākere Ranges Local Board

ID	Activity Name	Activity Description	Activity Benefits	Further Decision Points for LB	LB Plan Outcome	LB Plan Objective	Lead Dept/Unit or CCO	Delivery Year(s)	Budget Source	2024/2025	WP Planning Status
988	Waitākere Ranges Local Board Ecological Restoration contracts	The Ecological Restoration maintenance contracts include pest plant within ecologically significant areas and animal pest management across all parks and reserves funded from local board budgets.	With the maintenance contracts, local board assets are able to be maintained to the approved level of service. These contracts provide for a programme of restoration planting and pest animal and plant control for high value sites, and for response to requests for animal pests in parks. These contracts benefit all members of the public as they improve ensure ecologically significant sites on our local parks and reserves are pest free and offer ecological and wider benefits.	No further decisions anticipated	2023WR2 - Our environment	2023WR2.2 - Natural areas on parks are protected restored, and enhanced	CCS: PCF – Operations	2024/2025; 2025/2026	ABS: Opex	236,010	Continue
990	Waitākere Ranges Local Board Arboriculture contracts	The Arboriculture maintenance contracts include tree management and maintenance in parks and on streets, funded from local board budgets.  These contractors also undertake storm damage works although these are funded from regional budgets.	With the Arboriculture Contracts, trees in parks and reserves, and on streets, are able to be maintained to the approved level of service. These contracts provide for a programme of tree inspection and maintenance, and for response to requests for maintenance of trees which have become damaged or are obstructions. These contracts benefit all members of the public as trees which are properly maintained are more likely to remain in good health, are less likely to become health and safety issues, and offer greater visual amenity.	No further decisions anticipated	2023WR2 - Our environment	2023WR2.3 - Protection and enhancement of urban tree cover	CCS: PCF – Operations	2024/2025; 2025/2026	ABS: Opex	684,566	Continue
991	Waitākere Ranges Full Facilities maintenance contracts	The Full Facilities maintenance contracts include maintenance and repair of all assets across buildings, parks and open spaces, and sports fields, funded from local board budgets.  These contractors also undertake coastal management and storm damage works, and upcoming town centre cleaning, street litter bin emptying, and vegetation clearance and berm mowing works, although these are funded from regional budgets.  This activity and related budget also includes smaller built system contractors such as pool plant specialists and technical systems contractors.	With the maintenance contracts, local board assets are able to be maintained to the approved level of service. These contracts provide for required compliance tasks and scheduled activities including planned preventative maintenance to be completed, and for response to requests for maintenance. These contracts benefit all members of the public as local board assets are able to be fully utilised if they are fit for the intended purpose, and it offers better value to ratepayers if assets remain in service for their expected life.	No further decisions anticipated	2023WR3 - Our community	2023WR3.1 - Our parks and open spaces provide opportunities for recreation and enjoyment by the surrounding local communities, and a place for nature	CCS: PCF – Operations	2024/2025; 2025/2026	ABS: Opex	2,173,504	Continue

## Customer and Community Services Opex Work Programme 2024/2025 - Waitākere Ranges Local Board

ID	Activity Name	Activity Description	Activity Benefits	Further Decision Points for LB	LB Plan Outcome	LB Plan Objective	Lead Dept/Unit or CCO	Delivery Year(s)	Budget Source	2024/2025	WP Planning Status
1025	Waitākere Ranges- Project Twin Streams maintenance	Supporting community trusts and engaging West Auckland communities around restoring streams and encouraging and environmental initiatives. This includes: community planting, annual pest plant and animal control; local park clean ups; and community environmental education and events.	<ul style="list-style-type: none"> <li>•Increase the number of people and groups involved in active protection of the biodiversity values across the local board area – on private and public lands</li> <li>•Greater alignment and cooperation of community conservation activities</li> <li>•Number of traps and bait station under active management in the area</li> <li>•Reduction in pest plants</li> <li>•Increase in number of trees planted.</li> </ul>	No further decisions anticipated	2023WR2 - Our environment	2023WR2.5 - Our streams and wetlands are healthy and restored	CCS: PCF – Specialist Operations	2024/2025	ABS: Opex	259,200	Continue
1043	Library services - Waitākere Ranges	Libraries provide welcoming, safe and inclusive environments that deliver digital, facility and community-based services and programmes to promote literacy, digital literacy, te reo Māori, and access to information.  Hours of service: - Te Pātaka Kōrero o Okaurirahi (Glen Eden Library) for 52 hours over 6 days per week. - Te Pātaka Kōrero o Titirangi (Titirangi Library) for 52 hours over 6 days per week.	<p>Increased levels of literacy and digital access at all ages.</p> <p>Community are connected to information, resources and infrastructure for recreation and learning.</p> <p>Te reo Māori is widely spoken, understood and celebrated.</p> <p>Community have equitable access to targeted services and programmes that meet their needs.</p>	No further decisions anticipated	2023WR3 - Our community	2023WR3.4 - Our libraries and facilities provide engaging spaces at the heart of the community	CCS: Connected Communities – Community Delivery	2024/2025	ABS: Opex	1,140,248	Continue
1046	Support communities running volunteer rural libraries in Piha and Waiatarua - Waitākere Ranges	Budget allocations from Libraries regional funding to each of these libraries. In addition, Auckland Libraries continues to provide bulk loans of materials, professional and other advice and help (Funded with Libraries Mobile and Access Services regional Opex) No approval required from Waitakere Ranges Local Board	Piha and Waiatarua libraries volunteer rural libraries receive additional financial support to provide volunteer library services	No further decisions anticipated	2023WR3 - Our community	2023WR3.4 - Our libraries and facilities provide engaging spaces at the heart of the community	CCS: Connected Communities – Community Delivery	2024/2025	Regional	1,888	Continue
1049	Additional support for volunteer libraries - Waitākere Ranges	Piha Library Trust receive additional top up to existing regional funding for 2x insurances covering the building and contents and public liability.	Piha Library Trust receives additional support to provide volunteer library services at Piha Library	No further decisions anticipated	2023WR3 - Our community	2023WR3.4 - Our libraries and facilities provide engaging spaces at the heart of the community	CCS: Connected Communities – Community Delivery	2024/2025	LDI: Opex	3,500	Continue

## Customer and Community Services Opex Work Programme 2024/2025 - Waitākere Ranges Local Board

ID	Activity Name	Activity Description	Activity Benefits	Further Decision Points for LB	LB Plan Outcome	LB Plan Objective	Lead Dept/Unit or CCO	Delivery Year(s)	Budget Source	2024/2025	WP Planning Status
1331	Waitākere Ranges Local Parks Management Plan	Develop a multi-park management plan that assists the Waitākere Ranges Local Board in managing use, development and protection of all parks, reserves and other open space they have allocated decision-making for.	<ol style="list-style-type: none"> <li>1. A holistic and integrated view of the local board's core park management issues and priorities.</li> <li>2. Consistency of open space management across the local board area and park types.</li> <li>3. Clearer direction for park use, protection and development.</li> <li>4. Lower cost to produce than single reserve management plans and more responsive to changing community needs.</li> <li>5. Evidence gathered about the local board's local park portfolio, including park values, to inform future decision-making.</li> <li>6. The Reserves Act 1977 requires councils to prepare management plans for most types of reserves held under this Act.</li> <li>7. All reserves subject to the Reserves Act 1977 appropriately classified prior to public notification of the draft local parks management plan.</li> </ol>	<ul style="list-style-type: none"> <li>• Decision to notify intent to prepare local parks management plan and seek public suggestions</li> <li>• Decision on park land classification investigation</li> <li>• Decision to notify draft local parks management plan and on hearings panel composition</li> <li>• Decision to approve final local parks management plan</li> </ul>	2023WR3 - Our community	2023WR3.1 - Our parks and open spaces provide opportunities for recreation and enjoyment by the surrounding local communities, and a place for nature	CCS: RSS – Service and Asset Planning	2023/2024; 2024/2025; 2025/2026	LDI: Opex	0	Continue
1353	Movies in Parks - Waitakere Ranges	Deliver one outdoor movie screening event, with local pre-entertainment, themed activities and food stalls. The event is promoted through local channels and regional series platforms. PLEASE NOTE- Events Unit staff costs have been added to the 2024/2025 budget.	The community can attend free local events which can encourage people to experience local parks and contribute to a stronger and connected community.	No further decisions.	2023WR3 - Our community	2023WR1.3 - People from our diverse communities are connected and feel as though they belong	CCS: RSS – Events	2024/2025	LDI: Opex	22,745	Continue
3571	Waitākere Ranges Provision Assessment Review	Proposed new zero cost project to undertake a reassessment of (provision assessment) to best inform current and future priorities for delivery as part of ongoing work programmes. This will ensure that investment is appropriately targeted in the context of current fiscal constraints. Note - this is a recommended priority project.	TBC	No further decisions anticipated	2023WR4 - Our places	2023WR3.1 - Our parks and open spaces provide opportunities for recreation and enjoyment by the surrounding local communities, and a place for nature	CCS: PCF – Specialist Operations	2023/2024; 2024/2025	ABS: Opex	0	Continue
3602	Waitākere Ranges - move relocatable pump track	Move the relocatable pump track to a new site.	Providing a range of recreational activities for our communities		2020WR7 - We have infrastructure and facilities that support and enhance our neighbourhoods and town centres	2020WR7.2 - Well maintained, accessible parks, facilities and public spaces	CCS: PCF – Operations	2023/2024	LDI: Opex	0	New

## Customer and Community Services Opex Work Programme 2024/2025 - Waitākere Ranges Local Board

ID	Activity Name	Activity Description	Activity Benefits	Further Decision Points for LB	LB Plan Outcome	LB Plan Objective	Lead Dept/Unit or CCO	Delivery Year(s)	Budget Source	2024/2025	WP Planning Status
3904	Youth specialist delivery - Waitākere Ranges	Local Board contribution towards the capability required to deliver youth community development activities and outcomes.	The local board is able to realise its community outcome objectives and deliver on related key initiatives.		2023WR1 - Our people	2023WR1.2 - To enhance the health, wellbeing and resilience of local communities	CCS: Connected Communities – Community Delivery	2024/2025	LDI: Opex	7,781	Continue
3921	Community Development Specialist delivery- Waitākere Ranges	Local Board contribution towards the capability required to deliver community development activities and outcomes.	The local board is able to realise its community outcome objectives and deliver on related key initiatives.		2023WR1 - Our people	2023WR1.2 - To enhance the health, wellbeing and resilience of local communities	CCS: Connected Communities – Community Delivery	2024/2025	LDI: Opex	57,300	Continue
4002	Citizenship ceremonies Waitākere Ranges - hosted at Hoani Waititi Marae	Additional costs for hosting citizenship ceremonies at Hoani Waititi Marae	Local people can recognise and celebrate important occasions and build social cohesion through welcoming new citizens.	Local board to approve delivery plan of the event	2023WR1 - Our people	2023WR1.1 - Strong and productive mana whenua and mataawaka relationships	CCS: RSS – Events	2024/2025	LDI: Opex	4,706	Continue
4036	Shade/Shelter Provision Assessment	Undertake shade/shelter provision assessment for Local Parks in the Waitākere Ranges.	Improved planning for future work programmes through identification of priority outcomes.	Q1 - scope refinement Q2 - information workshop Q3 - draft presentation Q4 - report adoption	2023WR4 - Our places	2023WR3.1 - Our parks and open spaces provide opportunities for recreation and enjoyment by the surrounding local communities, and a place for nature	CCS: PCF – Specialist Operations	2024/2025	LDI: Opex	0	New
4160	Waitākere Ranges Local Board Te Kete Rukuruku (Māori naming of Parks and Places) Tranche Three	Māori naming (and associated story telling) of parks and places in partnership with mana whenua to highlight and promote Auckland's Māori identity and use of te reo Māori. The outcome being a dual Māori/English name or a sole Māori name and the story behind that name.	Increases in the number of parks and places with Māori names, to support te reo Māori to be seen, heard, spoken and learned. Restoration of the mana and mauri to the whenua.  Aligns with the Mental Health Foundation framework, specifically 'keep learning' because learning another language improves our understanding and confidence  Contributes to key action points in Te Reo Māori Action Plan 2020-2023	No further decisions are anticipated	2023WR3 - Our community	2020AE2.1 - Māori cultural heritage is valued and protected	CCS: RSS – Māori Outcomes	2025/2026	LDI: Opex	5,000	Continue
4340	Waitākere Ranges local service property portfolio review	Undertake service property review of local board assets to identify opportunities that will help the local board understand where & how to focus capital budgets for their future communities	The local board will have a better understanding of where and how to focus their capital budgets for their future communities	No further decisions anticipated	2023WR3 - Our community	2023WR3.2 - Parks and facilities are adaptable in the face of climate change, growth and other pressures	CCS: RSS – Service and Asset Planning	2024/2025	Regional	0	New

## Customer and Community Services Opex Work Programme 2024/2025 - Waitākere Ranges Local Board

ID	Activity Name	Activity Description	Activity Benefits	Further Decision Points for LB	LB Plan Outcome	LB Plan Objective	Lead Dept/Unit or CCO	Delivery Year(s)	Budget Source	2024/2025	WP Planning Status
4357	Local Civic Events Waitākere Ranges	Deliver local civic events including: Te Kakau cultural park opening.	The local community can celebrate or recognise moments, places or events that are significant to them.	Local Board to provide direction on the delivery of the specific events during the year.	2023WR1 - Our people	2023WR1.3 - People from our diverse communities are connected and feel as though they belong	CCS: RSS – Events	2024/2025	LDI: Opex	7,790	New
4398	Social and historic heritage event- Heritage Conference	Deliver the Heritage conference	Local people can participate in events, activities and programmes that enhance the social and heritage aspects.	Local Board to approve delivery plan of the event	2023WR1 - Our people	2023WR1.3 - People from our diverse communities are connected and feel as though they belong	CCS: RSS – Events	2024/2025	LDI: Opex	22,000	New
4412	Rangatahi-led Matariki Activations	Rangatahi Māori to plan and facilitate Matariki activations in their local community during the Matariki celebration period. <ul style="list-style-type: none"> <li>- Designing a training programme that develops rangatahi Māori to plan and facilitate community activations.</li> <li>- Engage a prototype cohort of rangatahi Māori to take part in paid training to develop planning and facilitation skills for community activations.</li> <li>- Appropriately prepare prototype cohort of rangatahi Māori to deliver Matariki activations in their local communities.</li> <li>- Activations run in local communities, community hubs, libraries or other relevant community spaces.</li> <li>- Whānau focused with multi-generation engagement as the target audience</li> </ul>	Increased quality of Māori engagement Increased capability and confidence of rangatahi Māori Māori needs are prioritised and initiatives are Māori-centric in their development and delivery: Increase the capacity of place-based Māori communities to deliver Matariki		2023WR1 - Our people	2023WR1.3 - People from our diverse communities are connected and feel as though they belong	CCS: Connected Communities – Community Delivery	2024/2025	LDI: Opex	10,000	New

## Community Leases Work Programme 2024/2025 - Waitākere Ranges Local Board

ID	Activity Name	Activity Description	Activity Benefits	Further Decision Points for LB	LB Plan Outcome	LB Plan Objective	Lead Dept/Unit or CCO	CL: Lease Commencement Date	CL: Final Lease Expiry Date	CL: Annual Rent Amount (excluding GST)	CL: Annual Opex Fee (excluding GST)	CL: Building Ownership	WP Planning Status
3387	42 Seaview Road, Titirangi, EOI process for Old Piha School House	New lease	To provide a facility and support for a community lease space	At lease expiry/renewal	2023WR3 - Our community	2023WR3.1 - Our parks and open spaces provide opportunities for recreation and enjoyment by the surrounding local communities, and a place for nature	CCS: PCF – Community Leases	15/03/2021	14/03/2021	1.00	250.00	Council	Continue
3649	Titirangi War Memorial Reserve - Royal New Zealand Plunket Trust	New Lease	To provide free health and development checks.	At lease expiry/renewal	2023WR1 - Our people	2023WR1.2 - To enhance the health, wellbeing and resilience of local communities	CCS: PCF – Community Leases	28/08/2013	27/08/2023	1.00	841.00	Council	Continue
3650	Kowhai Reserve - Titirangi Badminton Club Incorporated	New Lease	To provide facilities for badminton.	At lease expiry/renewal	2023WR3 - Our community	2023WR3.1 - Our parks and open spaces provide opportunities for recreation and enjoyment by the surrounding local communities, and a place for nature	CCS: PCF – Community Leases	1/09/1980	31/08/2023	5.00	0.00	Tenant	Continue
3651	Waiatarua Reserve - Waiatarua Performing Arts Trust	Renewal	To provide facilities for arts.	At lease expiry/renewal	2023WR3 - Our community	2023WR3.1 - Our parks and open spaces provide opportunities for recreation and enjoyment by the surrounding local communities, and a place for nature	CCS: PCF – Community Leases	12/06/2014	11/06/2034	1.00	0.00	Tenant	Continue
3653	Waiatarua Reserve - Waiatarua Ratepayers and Residents Association	New Lease	To provide support to the community	At lease expiry/renewal	2023WR1 - Our people	2023WR1.3 - People from our diverse communities are connected and feel as though they belong	CCS: PCF – Community Leases	1/06/2014	30/05/2024	1.00	0.00	Council	Continue

## Community Leases Work Programme 2024/2025 - Waitākere Ranges Local Board

ID	Activity Name	Activity Description	Activity Benefits	Further Decision Points for LB	LB Plan Outcome	LB Plan Objective	Lead Dept/Unit or CCO	CL: Lease Commencement Date	CL: Final Lease Expiry Date	CL: Annual Rent Amount (excluding GST)	CL: Annual Opex Fee (excluding GST)	CL: Building Ownership	WP Planning Status
3655	Waitākere Ranges Local Board Community Leases FY2025/2026 Work Programme	Piha Tennis Club Incorporated; Paturia Bay Ratepayers and Residents Association, Titirangi Royal New Zealand Returned and Services Association Bowling Club Incorporated, Playcentre Aotearoa Titirangi; Glenora Rugby League Football Club Incorporated; The Bethells Beach Surf Life Saving Patrol; Glen Eden Athletic and Harrier Club; Glen Eden Community and Recreation Centre Incorporated; Glen Eden United Sports Club - Pergola; Glen Eden United Sports Club Incorporated; Piha Ratepayers and Residents Association Incorporated; Playcentre Aotearoa Waiaatarua; United North Piha Lifeguard Service Incorporated;	Develop a sense of belonging and engagement with the community	At lease expiry/renewal	2023WR3 - Our community	2023WR3.1 - Our parks and open spaces provide opportunities for recreation and enjoyment by the surrounding local communities, and a place for nature	CCS: PCF – Community Leases						Continue
4171	Laingholm Hall Reserve: The Laingholm and District Citizens Association (1998) Incorporated	New lease	To develop a sense of belonging and engagement with the community	At lease expiry/renewal	2023WR3 - Our community	2023WR3.1 - Our parks and open spaces provide opportunities for recreation and enjoyment by the surrounding local communities, and a place for nature	CCS: PCF – Community Leases	12/01/2014	30/11/2024	1.00	0.00	Tenant	New
4172	10-14 Township Road, Waitakere: Auckland Kindergarten Association - Waitākere	New lease	To provide facilities for playcentre/childcare/ kindergarten	At lease expiry/renewal	2023WR3 - Our community	2023WR3.1 - Our parks and open spaces provide opportunities for recreation and enjoyment by the surrounding local communities, and a place for nature	CCS: PCF – Community Leases	4/01/2015	31/03/2025	1.00	0.00	Tenant	New

## Community Leases Work Programme 2024/2025 - Waitākere Ranges Local Board

ID	Activity Name	Activity Description	Activity Benefits	Further Decision Points for LB	LB Plan Outcome	LB Plan Objective	Lead Dept/Unit or CCO	CL: Lease Commencement Date	CL: Final Lease Expiry Date	CL: Annual Rent Amount (excluding GST)	CL: Annual Opex Fee (excluding GST)	CL: Building Ownership	WP Planning Status
4173	Les Waygood Park:Piha Community Centre Society Incorporated	Renewal of lease	To develop a sense of belonging and engagement with the community	At lease expiry/renewal	2023WR3 - Our community	2023WR3.1 - Our parks and open spaces provide opportunities for recreation and enjoyment by the surrounding local communities, and a place for nature	CCS: PCF – Community Leases	9/01/2014	31/08/2034	1.00	0.00	Tenant	New
4174	French Bay Esplanade Reserve:Titirangi Volunteer Coastguard Incorporated	Termination of lease following the 2023 storm damage	To explore alternative uses and redevelopment of the space	At lease expiry/renewal	2023WR3 - Our community	2023WR3.1 - Our parks and open spaces provide opportunities for recreation and enjoyment by the surrounding local communities, and a place for nature	CCS: PCF – Community Leases	23/04/2015	22/04/2035	1.00	0.00	Tenant	New
4352	Waitākere Ranges Local Board Community Leases FY2026/2027 Work Programme	Glenora Eagles Softball Club Incorporated; The Sovereign in Right of New Zealand	Develop a sense of belonging and engagement with the community	At lease renewal/expiry	2023WR3 - Our community	2023WR3.1 - Our parks and open spaces provide opportunities for recreation and enjoyment by the surrounding local communities, and a place for nature	CCS: PCF – Community Leases						New
4376	United North Piha Lifeguard - Campground	New Lease (relocated site) for the United North Piha Lifeguard Campground	To provide essential lifesaving services.	At lease expiry/renewal	2023WR1 - Our people	2023WR1.2 - To enhance the health, wellbeing and resilience of local communities	CCS: PCF – Community Leases						New
4386	Te Henga Beach, Surf Life Saving Club	New Lease (relocated site) after the 2023 floods.	To provide essential surf life saving services.	At lease expiry/renewal	2020AE3 - High-quality natural environments and sustainable lifestyles	2020WR1.2 - Protect and enhance the area's heritage features	CCS: PCF – Community Leases						New



## Community Leases Work Programme 2024/2025 - Waitākere Ranges Local Board

ID	Activity Name	Activity Description	Activity Benefits	Further Decision Points for LB	LB Plan Outcome	LB Plan Objective	Lead Dept/Unit or CCO	CL: Lease Commencement Date	CL: Final Lease Expiry Date	CL: Annual Rent Amount (excluding GST)	CL: Annual Opex Fee (excluding GST)	CL: Building Ownership	WP Planning Status
4402	Titirangi Volunteer Coastguard	License to Occupy	To process a License to Occupy between the Titirangi Volunteer Coastguard and Auckland Council for one of Auckland Council's ranger depots on a regional park for the purposes of storage and use of facilities post damage to French Bay building during the floods.	At license expiry/renewal	2023WR3 - Our community	2023WR1.2 - To enhance the health, wellbeing and resilience of local communities	CCS: PCF – Community Leases						New

## Infrastructure and Environmental Services Work Programme 2024/2025 - Waitākere Ranges Local Board

ID	Activity Name	Activity Description	Activity Benefits	Further Decision Points for LB	LB Plan Outcome	LB Plan Objective	Lead Dept/Unit or CCO	Delivery Year(s)	Budget Source	2024/2025	WP Planning Status
514	Kerbside recycling collection for commercial premises in Piha	As a result of a gap in service provision in which Piha businesses do not have access to a private recycling service, in 2019 Waste Solutions developed an exemption policy that allowed for additional bins above the standard capacity limit to be provided to impacted businesses. The service was introduced to businesses from September 2019 – January 2020. It is proposed that the Waitākere Local Board continue to cover the cost of this service to ensure consistent service provision and relationships with businesses in the area.	Ensuring the business community of Piha have access to a recycling service that meets their volume needs will achieve increased waste minimisation as plastics, glass and paper that do not need to go to landfill are diverted. Maintenance of relationships built throughout the roll out of this service change in the area, and between Piha local businesses and the local board.	No further decisions anticipated	2023WR2 - Our environment	2023WR2.6 - We understand climate change risks, take action to reduce our climate impact, and are prepared to adapt and respond to future events	I&ES: Waste Solutions	2021/2022; 2022/2023; 2023/2024	LDI: Opex	3,500	Continue
518	Waitākere Weed Action Project (Our Backyard)	Our Backyard project for 2024/2025 will continue providing contractor support for control of climbing asparagus, wild ginger, moth plant and woolly nightshade in Piha, Anawhata, Huia and Cornwallis. This programme is run in conjunction with the Regional Pest Management Plan buffers rules (7.5.2) so that we can continue supporting communities with advice about restoring and maintaining native ecosystems. The long term success of the programme relies on land occupiers to continue pest plant control alongside community conservation groups in the Waitākere Ranges Heritage Area and across Auckland. The intent is for 2024/2025 is that properties worked in prior years will be engaged with to enable high priority properties to become self-sufficient in pest plant control. Contractor control efforts will be focussed on initial control for properties not previously visited. This is to allow the project to expand into other areas e.g. the northern areas of the Waitākere Ranges.	Educating landowners on the effects of pest plants and benefits of restoration. Intact forest ecosystems such as important Biodiversity Focus Areas within the Waitākere Ranges are protected.	No further decisions anticipated	2023WR2 - Our environment	2023WR2.1 - Ecosystems are protected, restored and enhanced in the Waitākere Ranges Heritage Area	I&ES: Environmental Services – Natural Environment Delivery	2021/2022; 2022/2023; 2023/2024; 2024/2025	LDI: Opex	100,000	Continue
609	South Titirangi Restoration Project	South Titirangi Neighbourhood Network will be engaging with key stakeholders in areas of priority around Tinopai Reserve and the South Titirangi Peninsular to control pest plants in order to protect and enhance the native biodiversity. The physical works will then be carried out by contractors.	Support community undertaking extensive weed control in the road reserve, local parks and private land. Provide important ecological habitat for biodiversity in the area.	No further decisions anticipated	2023WR2 - Our environment	2023WR2.1 - Ecosystems are protected, restored and enhanced in the Waitākere Ranges Heritage Area	I&ES: Environmental Services – Natural Environment Delivery	2021/2022; 2022/2023; 2023/2024; 2024/2025	LDI: Opex	15,000	Continue

## Infrastructure and Environmental Services Work Programme 2024/2025 - Waitākere Ranges Local Board

ID	Activity Name	Activity Description	Activity Benefits	Further Decision Points for LB	LB Plan Outcome	LB Plan Objective	Lead Dept/Unit or CCO	Delivery Year(s)	Budget Source	2024/2025	WP Planning Status
613	Pest Free Waitākere Ranges Alliance Coordinator	A community coordinator is employed to help deliver the outcomes of the Pest Free Waitākere Ranges Alliance's strategic plan. The coordinator role will provide support, enable, and connect community conservation groups within the Heritage Area.	Biodiversity benefits across environmental groups working in the Waitākere Ranges Heritage Area. Groups work in pest plant and animal control, riparian and other planting, healthy waterways, species protection and more. Social outcomes supported by regular PFWRA hui. People are encouraged to work together and connect with nature.	No further decisions anticipated	2023WR2 - Our environment	2023WR2.1 - Ecosystems are protected, restored and enhanced in the Waitākere Ranges Heritage Area	I&ES: Environmental Services – Natural Environment Delivery	2021/2022; 2022/2023; 2023/2024; 2024/2025	LDI: Opex	100,000	Continue
618	Climate Action Activator - Waitākere Ranges	The Climate Action Activator will support implementation of impactful community-based climate change actions in the Waitākere Ranges local board area that contribute towards achievement of objectives and outcomes in the Waitākere Ranges Local Climate Action Plan. The Activator will continue to progress a work programme established in 2023/2024 to engage with the community to catalyse local community action in the areas of sustainable food, sustainable transport, energy efficient homes, tree planting, local circular economy, and climate education and adaptation initiatives.	This programme will engage and activate local community action in the areas of sustainable transport, food waste reduction, local food production, balanced diets with more plant-based meals, energy efficient, electric homes, carbon sequestration, local circular economy, and climate adaptation. It also responds to Auckland Council's climate emergency declaration to address climate change and encourages collaboration between community organisations and businesses involved in low carbon initiatives. The local climate action plan provides a roadmap for Waitākere Ranges to become a low carbon community. A dedicated resource to drive implementation of the local climate action plan and guide local actions that respond to the regional climate emergency. This will contribute to delivering on the goals of Te Tāruke-ā-Tāwhiri: Auckland's Climate Plan, to reduce greenhouse gas emissions by 50% by 2030 and achieve net zero emissions by 2050 and to adapt to the impacts of climate change. Provide positive multiple sustainability and resilience outcomes, environmental, social and economic benefits. Opportunity to amplify the voice of local businesses, iwi, and youth in progressing	No further decisions anticipated	2023WR2 - Our environment	2023WR2.6 - We understand climate change risks, take action to reduce our climate impact, and are prepared to adapt and respond to future events	I&ES: Environmental Services – Sustainability Initiatives	2021/2022; 2022/2023; 2023/2024; 2024/2025	LDI: Opex	40,000	Continue
622	Community Nurseries (EcoMatters) - Waitākere Ranges	To continue to support the establishment of community nurseries, and the provision of advice to the community on how best to establish and maintain these. Specialist nursery resource and volunteers will support growing of eco-sourced plants at the EcoMatters site throughout the year. These plants will be made available to community groups undertaking restoration in the Waitākere Ranges.	This programme ensures Waitākere Ranges conservation volunteers can source and have the skills to grow their own locally eco-sourced plants for use in restoration initiatives. Activity for 2024/2025 will be as per 2023/2024, with refinements based on ongoing continuous improvement activity, customer feedback and input from the local board.	No further decisions anticipated	2023WR2 - Our environment	2023WR2.1 - Ecosystems are protected, restored and enhanced in the Waitākere Ranges Heritage Area	I&ES: Environmental Services – Sustainability Initiatives	2021/2022; 2022/2023; 2023/2024; 2024/2025	LDI: Opex	11,900	Continue

## Infrastructure and Environmental Services Work Programme 2024/2025 - Waitākere Ranges Local Board

ID	Activity Name	Activity Description	Activity Benefits	Further Decision Points for LB	LB Plan Outcome	LB Plan Objective	Lead Dept/Unit or CCO	Delivery Year(s)	Budget Source	2024/2025	WP Planning Status
623	EcoFest Festival (EcoMatters) - Waitākere Ranges	To continue to support the running of the annual EcoFest Festival in west Auckland which will run from March-April in 2025. This will include providing a community-based environmental festival with access to free public events around sustainable living, marketing the festival to businesses, institutions and community groups while acknowledging the local board's funding, promoting the festival in ways that target the diversity and distribution of the population, and working with other agencies who may be delivering similar events in the other sub-regions at the same time. Activity for 2024/2025 will be as per 2023/2024, with refinements based on ongoing continuous improvement activity, customer feedback and input from the local board.	The festival enables local communities to develop the skills, knowledge and resources to make positive choices for sustainable living and reduce their carbon footprint.	No further decisions anticipated	2023WR2 - Our environment	2023WR2.6 - We understand climate change risks, take action to reduce our climate impact, and are prepared to adapt and respond to future events	I&ES: Environmental Services – Sustainability Initiatives	2021/2022; 2022/2023; 2023/2024; 2024/2025	LDI: Opex	11,300	Continue
625	EcoMatters Environment Centre (EcoHub) Waitākere Ranges	Funding will support the operation of EcoMatters Environment Centre (EcoHub) and associated education programmes, as well as provide baseline funding for EcoMatters Trust. EcoMatters deliverables include: Manage the EcoMatters Environment Centre (EcoHub) Promote service to the diversity of Waitākere Ranges communities Provide and promote free/affordable meeting space to other environmentally focused community groups Deliver a minimum of 26 sustainability-related seminars/workshops	Waitākere Ranges communities have the skills, knowledge and resources to make positive choices for sustainable living and reduction of their carbon emissions.	No further decisions anticipated	2023WR2 - Our environment	2023WR2.6 - We understand climate change risks, take action to reduce our climate impact, and are prepared to adapt and respond to future events	I&ES: Environmental Services – Sustainability Initiatives	2021/2022; 2022/2023; 2023/2024; 2024/2025	LDI: Opex	41,800	Continue
636	Love Your Neighbourhood (EcoMatters) Waitākere Ranges	To provide rapid response assistance up to \$500 to support volunteer-driven practical environmental initiatives (for example environmental clean ups and restoration, community planting and food growing). This assistance will be promoted through appropriate networks across the local board area. Activity for 2024/2025 will be as per 2023/2024, with refinements based on ongoing continuous improvement activity, customer feedback and input from the local board.	This programme provides practical assistance to community groups to enable community-led environmental projects and not-for-profit preschools to enable environmental education initiatives, such as edible gardens, and water saving and collection devices. The programme can also respond to requests from the local board to support community environmental action.	No further decisions anticipated	2023WR2 - Our environment	2023WR2.6 - We understand climate change risks, take action to reduce our climate impact, and are prepared to adapt and respond to future events	I&ES: Environmental Services – Sustainability Initiatives	2021/2022; 2022/2023; 2023/2024; 2024/2025	LDI: Opex	12,000	Continue

## Infrastructure and Environmental Services Work Programme 2024/2025 - Waitākere Ranges Local Board

ID	Activity Name	Activity Description	Activity Benefits	Further Decision Points for LB	LB Plan Outcome	LB Plan Objective	Lead Dept/Unit or CCO	Delivery Year(s)	Budget Source	2024/2025	WP Planning Status
879	Manukau Harbour Forum - Waitākere Ranges	Continuing to support the operation of the Manukau Harbour Forum. Local board funding in 2024/2025 will contribute towards the part-time coordinator to assist with the delivery of the forum's goals, a three-day youth sustainability wānanga for up to 50 youth to develop leadership skills, sustainability knowledge, and collaborative action projects, and the continuing with the roll-out of the forum's communications plan, including extending community engagement work to a possible larger event if budget is approved.	Continuing to support the operation of the Manukau Harbour Forum. Local board funding in 2024/2025 will contribute towards the part-time coordinator to assist with the delivery of the forum's goals, a three-day youth sustainability wānanga for up to 50 youth to develop leadership skills, sustainability knowledge, and collaborative action projects, and the continuing with the roll-out of the forum's communications plan, including extending community engagement work to a possible larger event if budget is approved. If possible a renewal/update of the MHF video as per the communications plan aspiration for such an event (budget being approved) The coordinator will continue to support the advocacy of the Forum's aspirations for the Manukau Harbour and work in delivery and evolving the communications plan, with focus on MHF purpose being shared and understood and developing more community connection to the tributaries leading to the harbour itself. Opportunities to support and advise on awa restoration will be uncovered in engagement interaction and worked thru to support groups as is possible within the role. The youth leadership wānanga will raise awareness of the harbour among youth, connecting them with initiatives that align with the forum's objectives to improve	Members of the Manukau Harbour Forum will consider project proposals for delivery as part of the 2024/2025 work programme early in quarter one.	2023WR2 - Our environment	2023WR2.4 - Our Manukau Harbour beaches and west coast lagoons are clean and safe for swimming, with improved environmental outcomes for the harbour and its catchment	I&ES: Healthy Waters	2021/2022; 2022/2023; 2023/2024; 2024/2025	LDI: Opex	11,000	Continue
3010	West Coast Animal Management Support	To help provide additional animal management team capacity and support with their team to specifically target west coast beaches. This will help to improve by-law compliance and greater dog owner understanding of the rules/responsibilities, and help protect vulnerable ground nesting birds such as the NZ dotterel, petrels and little blue penguins at these west coast beaches.	Improving west coast beach dog walkers understanding of the dog related rules and bylaws and the biodiversity benefits of these rules. Greater protection and breeding success of several shorebird/seabird species on the west coast, particularly in support of NZ Dotterel, Little Penguin, several Petrel species and several other native shorebird species.		2023WR2 - Our environment	2023WR2.1 - Ecosystems are protected, restored and enhanced in the Waitākere Ranges Heritage Area	I&ES: Environmental Services – Natural Environment Delivery	2022/2023; 2023/2024; 2024/2025	LDI: Opex	35,000	Continue

## Infrastructure and Environmental Services Work Programme 2024/2025 - Waitākere Ranges Local Board

ID	Activity Name	Activity Description	Activity Benefits	Further Decision Points for LB	LB Plan Outcome	LB Plan Objective	Lead Dept/Unit or CCO	Delivery Year(s)	Budget Source	2024/2025	WP Planning Status
3454	Waitākere Ranges Welcome Pack	<p>A welcome pack for new residents to the Waitākere Ranges will aim to support people new to bush environments to connect with nature and adopt responsible lifestyles.</p> <p>The welcome pack will give multiple opportunities to receive and access nature-friendly information as well as the chance for continued engagement. The first contact will be a mail out with helpful information about living in the ranges. This will provide connections to (1) a website with more detailed information, (2) a select and collect list of resources for pickup from their local library (3) a chance to win some environment related prizes, this being the means to establish an opt-in database to a twice-yearly blog for ongoing community engagement.</p> <p>PFWRA Co-ordinator is employed to deliver the Welcome Pack project.</p>	<p>New residents will be made aware of the special nature of the Waitākere Ranges Heritage Area.</p> <p>New residents will easily access a range of information that will help them make better decisions and encourage them to take action which in turn will improve the environment of the Waitākere Ranges e.g. identification of weeds and how to remove and dispose of them appropriately, how to be a responsible pet owner, how to join a local environmental group etc.</p> <p>Social outcomes – connecting people to their community and nature.</p> <p>Improvement of measures would be identified through website data and survey of participants. Residents will be surveyed each year to determine the wants, needs and effectiveness of the programme.</p>	No further decisions anticipated	2023WR2 - Our environment	2023WR2.1 - Ecosystems are protected, restored and enhanced in the Waitākere Ranges Heritage Area	I&ES: Environmental Services – Natural Environment Delivery	2023/2024; 2024/2025	LDI: Opex	13,500	Continue
4081	Love Your Place Awards - EcoMatters Waitākere Ranges	<p>Funding to support environmental champion recognition awards that will specifically celebrate action undertaken in the Waitākere Ranges Local Board area. Awards ceremony is held every second year. Activity includes planning and organising the awards, booking the venue, finalising awards categories, call for nominations, convening a judging panel to select winner(s) for each awards category, and delivering the awards ceremony by the end of December 2024.</p>	<p>Recognise and celebrate the volunteers and champions who contribute to caring for the Waitākere Ranges environment.</p>	No further decisions anticipated	2023WR2 - Our environment	2023WR2.6 - We understand climate change risks, take action to reduce our climate impact, and are prepared to adapt and respond to future events	I&ES: Environmental Services – Sustainability Initiatives	2024/2025	LDI: Opex	13,000	New

## Plans and Places Work Programme 2024/2025 - Waitākere Ranges Local Board

ID	Activity Name	Activity Description	Activity Benefits	Further Decision Points for LB	LB Plan Outcome	LB Plan Objective	Lead Dept/Unit or CCO	Delivery Year(s)	Budget Source	2024/2025	WP Planning Status
1297	Long-tailed bat (pekapeka) community education project	<p>This programme is led by Community Waitakere and partners and will include open community events, bat walks, education and upskilling of community groups, targeted community events, use of automated bat recorders and various educational resource promotion.</p> <p>Community Waitakere will continue pekapeka education and awareness programmes to promote and advocate for the raised awareness and threats to pekapeka in the wider local community. Education and awareness campaigning is also targeted at various industry groups e.g., arborists, Council policy and planners staff, various landowners etc.</p> <p>Community Waitakere will continue to advocate for further research and monitoring of pekapeka in the greater Waitakere Ranges.</p> <p>This is the only major project across all Tamaki Makaurau whose total focus is solely around the advocacy, education and welfare of pekapeka. To help ensure that highly valuable taonga such as these don't continue to decline, it is important that this work continues.</p>	<p>Helping to increase the number of Aucklanders numbers of Aucklanders in being aware of pekapeka and the threats that pekapeka are up against. Helping to get a greater understanding of pekapeka population(s), dispersal and distribution helping to aid in their protection.</p> <p>Helping to support the ability to of pekapeka to start to recover towards becoming much less at risk of localised extinction.</p>	No further decisions are anticipated	2023WR2 - Our environment	2023WR2.1 - Ecosystems are protected, restored and enhanced in the Waitākere Ranges Heritage Area	CPO: Plans and Places	2024/2025	ABS: Opex	12,500	Continue
1299	Scenic Drive Buffer Zone (and inland Karekare extension)	<p>The Buffer Zones is long running project delivered by the EcoMatters pest plant team who visit properties in, Waiatarua, Laingholm and inland Karekare This project is to align with Our Backyard project and the Regional Pest Management Plan rules and will be delivered alongside the NETR funded work. The two main species targeted are wild ginger and climbing asparagus with the objective to prevent these species further spreading into the Waitākere Ranges Regional Park. We will aim to spend a greater proportion of this years budget on educating landowners and supporting self sustainability of pest control allowing contractors to focus their control efforts on initial control for properties new to the programme.</p>	<p>Educating landowners on the effects of pest plants and benefits of restoration.</p> <p>Intact forest ecosystems such as important Biodiversity Focus Areas within the Waitākere Ranges are protected.</p>	Budgets to be approved by Plans & Places/local board	2020WR3 - We work to respect, protect and restore the environment	2023WR2.1 - Ecosystems are protected, restored and enhanced in the Waitākere Ranges Heritage Area	CPO: Plans and Places	2024/2025	ABS: Opex	50,000	Continue

## Plans and Places Work Programme 2024/2025 - Waitākere Ranges Local Board

ID	Activity Name	Activity Description	Activity Benefits	Further Decision Points for LB	LB Plan Outcome	LB Plan Objective	Lead Dept/Unit or CCO	Delivery Year(s)	Budget Source	2024/2025	WP Planning Status
1300	Community weed bins (Waitākere Ranges Heritage Area)	<p>The weed bins provide a free pest plant disposal service to residents at several sites within the Waitākere Ranges Heritage area. The desired outcome of this service is that more households will control their pest plants if disposal is free and accessible. There will be 2 permanent sites at Piha &amp; Huia, 6 amnesty sites revolving 2 bins at:</p> <ul style="list-style-type: none"> <li>• Waiatarua Hall</li> <li>• Laingholm Hall</li> <li>• Swanson Central Landscapes</li> <li>• Pae O te Rangi Regional Reserve Te Henga</li> <li>• Konini School</li> <li>• Zig Zag track, Titirangi.</li> </ul> <p>All bins will be lined and closed up prior to disposal to Redvale Refuse site. EcoMatters will manage the day to day running of the weed bins such as replacing signs, keeping the sites tidy and public enquiries.. There will be an educational component to this programme featuring workshops. and handing out weed bags to community.</p> <p>We are awaiting MPI approval to divert this material to compost following trials.</p>	<p>Enabling the removal and disposal of RPMP pest plants from the Waitākere Ranges.</p> <p>Increasing public education about high priority pest plants.</p> <p>Kauri dieback testing of pest plant material at Puketetu island is complete and are now awaiting Ministry of Primary Industries approval so that this can be then sold as compost to the public.</p>	The board may be asked to approve changing from disposal to Redvale refuse site to composting pending approval from the Ministry of Primary Industries.	2023WR2 - Our environment	2023WR2.1 - Ecosystems are protected, restored and enhanced in the Waitākere Ranges Heritage Area	CPO: Plans and Places	2024/2025	ABS: Opex	97,000	Continue
1301	Visitor impact assessment (Te Henga & Piha local reserves)	Repeating the placement of road counters annually (i.e.; Jan/Feb 2020, Jan/Feb 2021, Jan/Feb 2022, etc.) for on-going monitoring.	<p>This would allow us to understand how the number of visitors to the WRHA may change over time, using the results gathered this year (2020) as a baseline. It would also allow us to understand how visitor numbers to various areas within the WRHA may change over time, again using the results gathered this year (2020) as a baseline. If such monitoring is repeated on a regular basis in future, it would allow us to develop a time series displaying longer term trends in visitor numbers to and within the area. This may prove potentially useful in forecasting or predicting future visitor numbers to and within the area once established.</p>		2020WR1 - The Waitākere Ranges Heritage Area is protected and enhanced, and connections with surrounding communities are strengthened	2020WR1.1 - Deliver a range of local activities across all local board plan outcomes that help deliver on the objectives of the WRHAA	CPO: Plans and Places	2021/2022	ABS: Opex	0	-



## Local Board Services Work Programme 2024/2025 - Waitākere Ranges Local Board

ID	Activity Name	Activity Description	Activity Benefits	Further Decision Points for LB	LB Plan Outcome	LB Plan Objective	Lead Dept/Unit or CCO	Delivery Year(s)	Budget Source	2024/2025	WP Planning Status
4028	Mana Whenua Engagement Governance Hui	Engagement Governance Hui - exact description to be determined and adopted as part of Q1 reporting	Engagement Governance Hui - benefits to be determined and adopted as part of Q1 reporting		2020WR4 - Our communities are resilient and strong	2020WR5.1 - Support for projects and activities that realise the aspirations of local people for the benefit of their communities	GOV: Local Board Services	2023/2024	LDI: Opex	3,500	New

## Memorandum

23 April 2024

**To:** Waitākere Ranges Local Board

**Subject:** Ecological and Environmental Volunteers - upcoming winter plantings

**From:** Kim Morris- Community Park Ranger – Specialist Operations Unit

**Contact information:** Kim.morris@aucklandcouncil.govt.nz

## Purpose

1. To provide details of scheduled planting dates, sites, and times across the Waitākere Ranges Local Board area to deliver the approved local parks Ecological and Environmental Volunteer's programme 2023/2024, for local board members' information.

## Summary

2. Planting events in relation to the Ecological and Environmental Volunteers Programme for winter 2024 that will be of interest to local board members.
3. Details of upcoming events are provided, and board members are welcome to attend.
4. Please advise the Community Ranger well in advance of any attendance.
5. Planned events are subject to change so we recommend members check on the Auckland Parks [Facebook page](#) prior to attending.

## Context

5. The annual Ecological and Environmental Volunteers Programme delivers on the Waitākere Ranges Local Board Plan Outcome 'We work to respect, protect and restore the environment'. It is included in the local board's 2022/2023 work programme (Activity ID 646) where \$35,000 of Locally Driven Initiatives Operational budget was allocated.
6. Winter is the main planting season, and the following planting events are scheduled. Local board members are invited to attend (see Table 1). **The dates planned are subject to change so please check the Auckland Parks [Facebook page](#) for latest changes prior to attending: <https://www.facebook.com/aucklandparks>**
7. If planning to attend let Community Rangers know in advance this is especially important if planning to attend a school site.

**Table 1.** Waitākere Ranges Local Board Ecological and Environmental Volunteers Programme winter 2024 - planting sites, dates and details. Public planting events are highlighted:

Reserve	Public Event (Y/N)	Specific location/entry	School/Community group	No. of plants	Day/Date of Planting	Time
<b>Milan/Whetu Reserve</b>	Y	Milan Reserve Entrance at the junction of Plumstead Rise and Milan Drive.	Friends of Milan Reserve. Heather and Jerry Tanguaway.	150	Saturday 20 <sup>th</sup> July	10:00am – 1pm
<b>Arapito Reserve</b>	Y	Arapito Reserve, meet at 35 Arapito Road.	Shadbolt House Writers Association. Tracey Sharp.	120	Saturday 24 <sup>th</sup> August	10:00am – 1pm
<b>Kawaka Reserve</b>	Y	111 Atkinson road, Kawaka Reserve.	Friends of Kawaka Reserve. Kay Millar.	150	Saturday 18 <sup>th</sup> May	10:00am – 1pm
<b>Western Park</b>	Y	Meet next to 14 Western Road, Western Park.	Restoration Ruatuna. Len Gilman.	150	TBC	TBC
<b>Woodside Glen/Pūrua Reserve</b>	Y	Meet at 72a Woodfern Crescent.	Friends of Woodside Glen. Nanda Maclaren.	340	Saturday 1 <sup>st</sup> June.	10:00am – 2pm
<b>Paturoa Stream (Titirangi Beach)</b>	Y	Meet in the Titirangi Beach carpark.	South Titirangi Neighbourhood Network (STNN) & Whitebait Connection	330	TBC	TBC
<b>Tangiwai reserve</b>	N	Tangiwai Reserve Carpark.	Woodlands Park Primary School/Adopt a Park Programme	420	Wednesday 19 <sup>th</sup> June	9:30am-2pm

Reserve	Public Event (Y/N)	Specific location/entry	School/Community group	No. of plants	Day/Date of Planting	Time

**Next steps**

- Staff will provide an update on the full program in Q4 (& Q1 FY2024/2025) reporting.

# Project Twin Streams budget overview and savings advice February 2023

## 1. Overview:

- The total funding for Project Twin Streams for FY22/23 is \$697,000 of Asset Based Services Funding (ABS), allocated across the Henderson-Massey and Waitākere Ranges Local Board Areas. See Table 1 for full budget breakdown
- Four local Community Trusts (Te Ukaipo, EcoMatters, Community Waitākere and MPHS) undertake the work outlined in the Funding Agreements and Services Agreements.
- The Community Park Ranger allocates the Discretionary Budget according to needs of works and community required across the project.

Project Twin Streams budget consists of the following three components:

- a) Funding agreements – (approximately 33% of the total Project Twin Streams budget)
- b) Services agreements – (approximately 38% of the total Project Twin Streams budget)
- c) Discretionary spending – (approximately 29% of the total Project Twin Streams budget).

Table 1. Project Twin Streams ABS budget summary by Local Board area FY22/23

<b>Henderson-Massey</b>	<b>Total</b>	<b>\$ 453,000</b>	<b>% of total</b>
<b>Description</b>	<b>Amount</b>		
Funding Agreements (community engagement)	\$ 144,514		32%
Service Agreements (ecological maintenance)	\$ 168,513		37%
Discretionary	\$ 139,974	Total - (Grants + Services)	31%

<b>Waitākere Ranges</b>	<b>Total</b>	<b>\$ 244,000</b>	<b>% of total</b>
<b>Description</b>	<b>Amount</b>		
Funding Agreements (community engagement)	\$ 82,300		34%
Service Agreements (ecological maintenance)	\$ 98,300		40%
Discretionary	\$ 63,400	Total - (Grants + Services)	26%

## 2. Summary of the Funding Agreements and Service Agreements:

### i. Funding agreements:

The budget for funding agreements provides funding to the Trusts listed above to engage environmental education mentors to provide educational programmes.

Education programmes include (but are not limited to);

- Connecting local people with their natural environment
- Education, activation and awareness/engagement activities connecting community to green restoration and enhancement
- Building relationships with local groups and teaching communities
- Working towards developing independent community groups to provide added value to the Service Agreement outcomes.
- imparting environmental restoration skills
- promoting environmental best practices
- reducing environmental impact

- encouraging environmental innovation

#### ii. Service agreements:

The budget for service agreements provides funding to the Trusts listed above to achieve green / environmental / physical objectives within the existing catchment areas:

- Restoring and maintaining the green assets to specified standards
- Working towards a self-sustaining natural environment
- Supporting the natural regeneration/maturation of PTS area ecosystems
- Enhancing catchment areas through enrichment
- To support agencies to engage volunteers/community/groups in being stewards and exercising kaitiakitanga to achieve streamside outcomes noting that some tasks can only be achieved by trained and certified staff.
- To deliver on the Council's Thriving Communities Action Plan by supporting flax/grassroots community action by Aucklanders to care for their local parks and streams.

### 3. Advice regarding savings for FY23/24:

If the Service Agreements budget (38% of the total Project Twin Streams budget) was to move into the Full Facilities contract, this may result in a reduction in service quality to the Project Twin Stream areas due to a reduced number of site visits for ecological maintenance in the Full Facilities Contract, and a reduced number of pest species controlled in the Full Facilities Contract compared to the current pest control undertaken by the Trusts. In addition, engagement of volunteers and community groups as stewards of the area would be reduced with resulting impacts on ecological restoration and community involvement. A reduction may result in fewer people and groups involved in active protection of the biodiversity values across the local board areas, and a potential decrease in community conservation activities.

We advise careful consideration of these impacts, and discussion with the Full Facilities Contract managers and the Community Trusts tasked with implementing the ecological restoration activities outlined in the Services Agreements to mitigate undesirable impacts on the current state of the environment in the Project Twin Streams areas.

Note: the Funding Agreements for Project Twin Streams (approximately 33% of the total budget) cover community engagement and education activities as outlined above, and are not suited to be moved into the Full Facilities Contract because these activities are not part of the suite of activities covered under the Full Facilities contract.

# West Coast Beach Ranger Report

December 2023- April 2024



# Table of Contents

Foreword..... **Error! Bookmark not defined.**  
1 Statistics..... **Error! Bookmark not defined.**  
2 Response .....6





## Background

Due to increasing concern regarding dog-related issues across Auckland's west coast beaches, the Waitakere Ranges Local Board and councils Natural Environment Delivery team have for the past two years support the Animal Management unit with funding for the establishment of a beach patrol officer (with the Local Board contributing \$35,000 annually and the Natural Environment Delivery team \$15,000). This funding supported the employment of a beach patrol officer in a fixed term position for a 7-month period.

The officer's primary role has been to promote compliance with the Dog Control Act 1996 and council bylaws, with an overarching goal of increasing responsible dog ownership and protecting endangered birdlife across Auckland's west coast beaches. Spread across a 7-day shift pattern, key functions of the role involved undertaking daily beach patrols, educating dog owners and the wider public and taking enforcement action where required. The role held a particular focus on beaches identified as 'hot-spots', such as Piha, Bethell's and Karekare beaches, with patrols also undertaken at Whatipu, Cornwallis and Kakamatua.

Working collaboratively with key stakeholders, including local groups such as the dotterel minders, summer park rangers, Dept of Conservation, surf life-saving club and community volunteers helped reduce anti-social dog behaviour and offending over the summer breeding season.

There was significant media interest and coverage of the beach patrol officer's activities, which helped raise awareness about the nesting habits and fragility of the native birdlife and helped spread key messaging Auckland wide. Media coverage also promoted visibility of the officer, with several members of the public approaching them following seeing them on local news forums. Some examples of the coverage can be found here:

[Animal Management Officer scores dream job - OurAuckland \(aucklandcouncil.govt.nz\)](https://www.aucklandcouncil.govt.nz/our-auckland/animal-management/animal-management-officer-scores-dream-job)

[Pooch Patrols in Action on West Coast Beaches](#)

[Increase in dog owners obeying bylaws at West Coast Beaches](#)

This report aims to detail the activities undertaken by Animal Management's beach patrol officer and highlight the positive impact this role has had.

Note: The statistics are accurate as of the 22 April 2024. The overall number of patrols and enforcement actions will continue to increase throughout the rest of the contracted period.

## 1 Patrols and enforcement action

December 2023-April 2024.

Beach	Patrols	Warnings	Infringements
Piha (North & South patrols)	138	28	9
Bethells	37	17	4
Karekare	19	2	1
Whatipu	8	0	0
Cornwallis	14	15	0
Kakamatua	9	3	0
Other *	11		4
<b>TOTAL</b>	<b>225</b>	<b>65</b>	<b>18</b>
<b>Previous year FY23</b>	<b>116</b>	<b>58</b>	<b>17</b>

\*11 patrols were undertaken at nearby hiking tracks and trails to the beaches such as Kitekite, Cascade Kauri, Point Chevalier, and Taipari Strand.

### Warnings

A total of **65 formal warnings** were issued, which is a **11%** increase on the previous year. 18 of these formal warnings were issued in the Huia area, which saw a much higher density of dogs during patrols in comparison to Piha, Bethells, and Karekare. Overall, there was heightened public awareness of the officer in comparison to the previous year, with members of the public frequently engaging in conversation with them.

### Infringements

**18 infringements** have been issued between December 2023 and April 2024. The infringements were issued for offences under the Dog Control Act 1996 and council bylaws, for varied reasons such as off-leash dogs, dogs in prohibited areas, roaming dogs and unregistered dogs compared to 17 from the previous year.

Previous statistics 2022-2023.

Beach	Patrols	Warnings	Infringements
Piha (North & South patrols)	70	Piha, Bethells & Karekare combined	6
Bethells/Te Henga	24	Piha, Bethells & Karekare combined	5
Karekare	16	Piha, Bethells & Karekare combined	6
Anawhata	6	0	0
<b>TOTAL</b>	<b>116</b>	<b>58</b>	<b>17</b>

Due to severe weather events during the 22-23 period, there were no patrols of the West Coast beaches from **27 January 2023 until 26 April 2023**, with patrols at Piha not resuming until **30 May 2023**, Karekare beach still has limited access.

### Challenges

Although patrols were conducted over the 7-day shift pattern there were some factors that limited the officer's ability to patrol the area such as weather conditions, land slips and road closures. Nearby areas that were not considered "hot-spots" such as Cornwallis beach, and Kakamatua beach were also patrolled.

These have not contributed to overall statistics.



## 2 Response

With the reported increase this year in roaming dogs and dog attacks, along with the drastic increase in the dog population of Auckland, Animal Management Officers will have less time to patrol these beaches should the summer beach patrol position not be reinstated for next summer.

The drive time from Henderson where the West Animal Management team is based to Piha or to Bethells / Te Henga is approx. 30 minutes, and the drive time from Henderson base to the Whatipū car park is approx. 1 hour. (Then another long walk to the beach itself). Each of these is a two-way trip, and if patrols of the area are included, just one patrol takes a significant amount of time from an Animal Management Officer's day, having the West Coast Beach Officer available for these patrols has created significant opportunities for these areas to be patrolled more frequently.

The Animal Management Officers on the West Team were able to focus more on the high-risk, high-harm jobs around West Auckland, such as dog attacks and roaming dogs, and were able to proactively patrol other areas, such as Parr's Park and Point Chevalier beach, more often due to a lesser need for them to patrol the West Coast beaches.

Having this position enabled a significant increase in patrolling along all the West Coast Beaches which can be seen in the statistics above.

These increased patrols have led to increased visibility, an Animal Management presence in the community and further education for the public regarding Dog Management Bylaws and local protected wildlife.

This increase in patrols and high visibility may also have led to more proactive compliance from dog owners during this period.

It is also important to consider that with the rising dog population and increase in roaming complaints and attacks across Auckland, the permanent Animal Management Officers would have less time now than during previous years to proactively patrol these beaches.

The chart below represents the changes over time of people who became compliant or left the beach upon seeing the Officer on patrol. February was a high peak time for visitors on the beach, rather than locals. Many people did not know or pay attention to the local dog bylaws, these people were spoken to and received warnings. Incidents where the patrol officer was not recognized were highest during large influxes of tourists and visitors to the beaches.

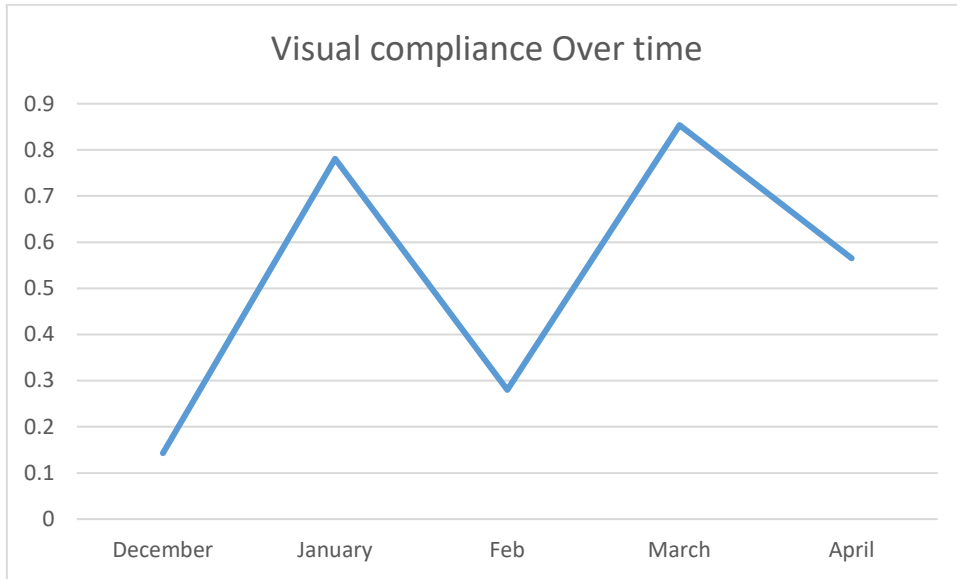


Chart 2. The number of people, on average per month, who either avoided interactions with the patrol officer, or became compliant with dog bylaws upon seeing the officer on the beach.





## Auckland Council – Animal Management

*West Coast Beaches summer ranger report 2023-2024*

Author & data analysis:	Clarke Trethowen <i>Team Leader, Animal Management</i>
Data provided by:	Christo van der Merwe. <i>Principal Specialist, Animal Management</i>  Fletcher Munsterman <i>Animal Management Officer (Beach patrols), Animal Management</i>

Find out more: **phone 09**  
or visit **[aucklandcouncil.govt.nz/](https://aucklandcouncil.govt.nz/)**

Project	Staff Proposed Budget	Local Board Direction (Workshop Six)	Implications for Project
<b>Pest Free Waitākere Ranges Alliance Coordinator</b>	100,000	Reduce by 10,000	<p>Decrease in funding will result in fewer hours worked by the coordinator. Staff have reinforced with PFWRA that the local board's direction is that this project focus on working towards the Predator Free 2050 goal.</p> <p>Pest Free status is a priority for PFWRA. The ArcGIS Mapping project (which is a foundation step for predator free status) will still be progressed in 24/25 if budget is decreased.</p>
<b>Climate Action Activator – Waitākere Ranges</b>	40,000	Reduce by 5,000	<p>Decrease in funding will result in approximately 100 fewer hours worked by the coordinator.</p> <p>Staff advise that a 35,000 budget is doable and will result in a scaled back programme.</p>
<b>Love Your Neighbourhood (EcoMatters) Waitākere Ranges</b>	12,000	Reduce by 2,000	<p>A budget of 12,000 would allow 18 - 19 community environmental initiatives to be supported.</p> <p>While a budget of 10,000 will be able to support 15 - 16 community environmental initiatives.</p>
<b>Love Your Place Awards – EcoMatters Waitākere Ranges</b>	13,000	Reduce by 3,000	<p>The 13k represents two years' worth of funding to this project as no funding was allocated in 23/24.</p> <p>The previous Love your place awards was funded at 5.6k for 21/22 and 22/23 (11.2k total).</p> <p>The increase to 13k total reflects the impact of inflation in costs for security, photography, and food since 2022.</p> <p>A decrease in funding could result in fewer award categories being offered. Staff do not think that they could run the awards in this financial year with a budget of 10,000 without substantial changes being made.</p> <p>Additionally, in previous years, EcoMatters has received in-kind support from local businesses (e.g free beverages). There is a risk that local businesses will not be able to assist this financial year due to current economic conditions.</p>