

# SITE INFORMATION - TE WĀHI PĀRONGO



Location of Barr Cottage



Barr Cottage

## BARR COTTAGE, LITTLE HUIA, WAITĀKERE RANGES

Barr Cottage is situated on the shores of the Manukau Harbour in Little Huia. Little Huia is a small community with a smattering of baches and homes set in and around steep forested parkland.

### Local highlights

Artists could focus on the parkland around Little Huia or propose a project on a park feature nearby. The stunning Karamatura Valley and loop walk is a short distance away, as is Cornwallis beach, the restored Cornwallis wharf and the Jubilee Track. Heritage buildings close to the residency cottage include the historic Huia Lodge - which was one of our earliest schoolhouses and Hinge House (within Kiwani's Huia Camp). The Marama and Karamatura streams are of regional geological significance. Further away is the rugged black-sand beach and scientific reserve at Whatipu. The Omanawanui Track and Mount Donald McLean track offer spectacular views of the district.

### Context

Te Kawerau ā Maki are associated with the site of this residency. There are significant pā and other cultural sites in the area.

This area was impacted by the timber logging industry which is interpreted in the 'Hill to Mill' trail in Karamatura Valley. There are some large kauri remaining and areas where kauri snails thrive.

Little Huia attracts many boaties and fisherpeople because of the public boat ramp, almost adjacent to the bach. There will be noise and congestion at times. A narrow public road in front of the cottage is a hazard for children.



### Scan these QR codes

Scan these QR codes to see the cottage and the work of previous artists based here.



View from the verandah

Applications close: Friday 21 February 2025

Find out more visit [aucklandcouncil.govt.nz/artistinresidence](https://aucklandcouncil.govt.nz/artistinresidence)



# ARTIST IN RESIDENCE ACCOMMODATION

Te wharenoho mō te ringatoi ā-kāinga taupua

## BARR COTTAGE 1368 LITTLE HUIA ROAD



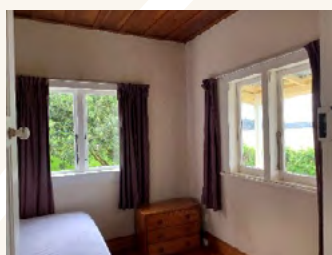
Looking from the dining room to the lounge and to the kitchen and a bedroom beyond.



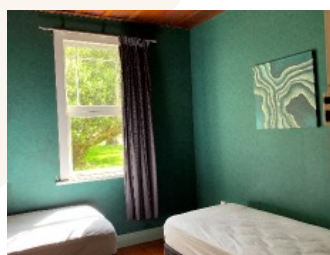
Dining room



Kitchen



Main bedroom



Bedroom

### DESCRIPTION

Barr Cottage is nestled into native bush and is just a road-width away from the beach. There are lovely expansive views out to the Manukau Harbour from the bedroom, dining room and from the front verandah. The 2025 artist's temporary home was built by Bill Barr between 1935-40 using materials from the original cottage of the 1880s.

### HOUSE FACILITIES

#### Living room

- Open plan living and dining. Living room table seats 6
- Living room has 2 couches and coffee table facing the firebox.

#### Bedrooms

- Bedrooms 1 and 2 have queen sized beds
- Bedroom 3: 2 single beds.

#### Kitchen

- 'Old school' cupboards, a formica bench, a fridge and freezer, an oven and rangehood, microwave, toaster, kettle.
- Well equipped with crockery, cutlery and kitchen implements, pots, pans, platters etc.

#### Bathroom

- The bathroom is 'bachy' and has a shower over the bath and a sink, with a separate toilet.

#### Utilities

- A firebox and two electric heaters are provided
- Water is treated and is from a stream-fed tank supply.
- Standard domestic power supply.

#### Phone coverage/wifi

- Because of the location, reception can be patchy for some providers, but is ok at the front door and just beyond the gate.
- There is no wifi provided, no radio, no tv. Wifi may be available at the ranger station nearby.

### HOUSE AND PARK RULES

- No pets permitted.
- The park is smoke-free

### WORK-SPACE

Use of the empty double garage is possible for making large or messy projects and there are two standard power points provided there.

### NEAREST FACILITIES

- Alfred's Huia Store at Huia ~1.8kms away.
- The nearest supermarket and shops are at Titirangi, which also has a library, gallery and other services.
- Huia Community Hall is close by and local events are held here occasionally.
- Huia Museum opens on Sundays 1.30-4pm.
- A park depot and ranger base is a 5 minute drive away.

Applications close: Friday 21 February 2025

Find out more visit [aucklandcouncil.govt.nz/artistinresidence](https://aucklandcouncil.govt.nz/artistinresidence)

