



Te Poari ā-Rohe o Whau
Te Rīpoata ā-Tau 2023/2024

Whau Local Board

Annual Report 2023/2024



Volume
2.21

Mihi

“E nga pītau whakarei o te waka,
 e nga rau tītapu o te iwi, e aku hei māpuna,
 e taku iti e taku rahi, koutou kua mahue mai nei
 hei toka piringa mōku i te ora,
 hei ruruhau i nga hau āwhio o te wā.
 E aku whakakai pounamu, e aku māpihi maurea,
 kia oho te mauri, kia māriri o koutou wairua,
 kia hora te marino, tēnā koutou katoa.
 Tēnei au te noho atu nei i te tihi o Te Pae o te Rangī,
 i tīhorea ai te whenua kia kī ake au,
 e koe e te hau o te uru te wawā rā, me te kī mai,
 e kore au e ora i ngā hau kōtiu, i āia ai te pūpūtara kī uta.
 Nāu nei te tonu kia piki ake au i ngā tai whakatū a Kupe
 ki Te Waonui a Tiriwa me te Pae o te Rangī,
 Kia titiro whakaroto ahau ki te maunga o Puketōtara,
 kei raro e rere ana ko te awa o Waitākere
 kei tētahi taha ko Puke Whakataratara, kei tua ko Te Whau.
 Koinei rā te rohe kāinga o Te Au o
 Te Whenua me te Kawerau a Maki,
 ko rātou nei te whāriki i āhei ai te nohoa
 o tēnei moka o te rohe
 e tini whāioio kua whakakāinga ma.,
 Kua kōhatu nei nga paparahi ki te whenua,
 i tangata whenuatia ai tātou katoa.
 I whaikiko ai te kōrero,
 “Ko te hapori te tauawhi i te taiao, he mea motuhake,
 rerenga kē.” Kia
 hiwa rā, kia hiwa rā.

To all those who adorn the prow of this canoe,
 to the revered leaders of the people, to my
 treasured heirlooms, the lesser and the greater parts of me,
 you who are my refuge in life,
 my shelter from the storms of time.
 My objects of affection,
 let your very being flourish, let your spirit be at peace,
 let the calm be widespread, I send greetings to you all.
 Here I sit on the ridgeline of Te Pae o te Rangī,
 where the land had been laid bare,
 and the roaring wind of the west whispers
 that I would not survive the blast of the northerly wind, that
 would drive the paper nautilus to shore.
 It was you who commanded me to ascend from the raised
 seas of Kupe,
 to the forest of Tiriwa, and Te Pae o te Rangī.
 So I look inland to Puketotara,
 at the foot of which runs the Waitākere river
 on one side stands Massey and on the other - Te Whau.
 Home of Te Au o te Whenua and Te Kawerau a Maki,
 the original settlers, they laid the way for later travellers
 to make a home here.
 They cast their footprints in stone upon these precincts of
 the region, and so made settlers of us all.
 Which gives substance to the adage,
 “Communities connected to their natural environment
 are unique and diverse.”
 Let us grow with vigour.

On the cover: Bike Avondale Night Ride 2023

He kōrero mō tēnei rīpoata

About this report

This annual report tells the story of how Auckland Council has performed in delivering services in the Whau Local Board area from 1 July 2023 to 30 June 2024.

You can read about our progress, expenditure, service performance and challenges faced in 2023/2024. It's part of the wider annual reporting package for the Auckland Council Group and meets our Local Government Act 2002 obligations to report on our performance against agreed measures. It reports against the council's Long-term Plan 2021-2031 (10-year Budget 2021-2031) and the Whau Local Board Agreement 2023/2024.

This report also reflects the local flavour of your area by profiling its population, people and council facilities. It features a story about a council or community activity that adds special value to the area and demonstrates how **together we're delivering for Auckland.**

▼ Splashy Bikers Nature Day 2024



Contents	
About this report.....	3
From the chairperson.....	4
Your board.....	5
Projects and improvements.....	6
Our performance report.....	8
Our performance explained.....	12
Local flavour.....	13
Funding impact statement.....	14

He kōrero mai i te heamana From the chairperson

As Chair of Whau Local Board I am proud to present the Whau Local Board Annual Report for 2023/2024.

Despite the financial constraints which affected our activities in this past year, we still made considerable progress with our priorities. We were more visible in our communities, especially in the Fruitvale and Glendene communities from which we have traditionally heard less. We funded a Matariki hangi at Glendene Community Hub, which also functioned as a Whau Local Board engagement event. We have developed a relationship with the Fruitvale School community and are in early discussions around the possibility of establishing a community hub at the school.

We continue to engage with mana whenua through governance hui with Te Kawerau ā Maki and the other western local boards, and have developed a stronger relationship with board members from the Hoani Waititi Marae. Our commitment to Māori has been made visible in the installation of a pou on the western side of the Rata Street bridge across the Whau River.

We have a new playground at Chalmers Reserve and a playground renewal in Green Bay Domain. Sports fields have been renewed at Blockhouse Bay Reserve and Shadbolt, Archibald, Ken Maunder, and Tahurangi Crum Parks. In response to the 2023 severe weather events, we carried out remediation work at Blockhouse Bay Reserve and Manawa Wetlands.

We provide ongoing support to our diverse communities, notably through the Whau Ethnic Collective, Whau Pasifika Komiti, Whau Youth Board and Whau Senior Providers Network. We are also proud to fund a range of environmental groups and volunteers.

The financial constraints of last year have continued into the 2024/2025 financial year, but we are still focused on our priorities which include working with our partners to build community capacity around climate and emergency preparedness and considering accessibility and

inclusion across our services. We will support volunteers through environmental initiatives around the Manukau Harbour foreshore, the Whau River and its tributaries, and our urban ngahere. We will continue to prioritise activities such as engagement and collaboration with mana whenua and working with our business associations to realise shared goals.

Our advocacy includes retention of the funding and existing timeline for the planned Whau Aquatic and Recreation Centre, park acquisition at the Avondale Racecourse, the development of Crown Lynn Park, completion of the Whau sections of Te Whau Pathway through funding partnerships, and the delivery of Te Hono, the Avondale Community Centre and Library project. We are pleased that Te Hono is now in the detailed design and consenting stage with construction scheduled to begin in early 2025. Another advocacy item is the completion of Whau sections of Te Whau Pathway through funding partnerships.

Ngā mihi nui,

Kay M Thomas
Kay Thomas

Chairperson,
Whau Local Board



Te Poari ā-Rohe o Whau Whau Local Board




▲ (L to R) Sarah Paterson-Hamlin, Fasiatua Amosa (Deputy Chairperson), Warren Piper, Kay Thomas (Chairperson), Ross Clow, Susan Zhu, Catherine Farmer.

Contact us

 31 Tōtara Avenue, New Lynn 0600

 Auckland Council
Private Bag 92300, Auckland 1142

 09 301 0101

 whaulocalboard@aucklandcouncil.govt.nz



aucklandcouncil.govt.nz/whau

Ngā kaupapa me ngā whakapaipai ake Whau projects and improvements

Key to current and planned projects

Delivered projects

- 1 Archibald Park - renew sports field #5
- 2 Archibald Park - install basketball half courts and seat
- 3 Riversdale Reserve renew structures and footpaths
- 4 Avondale Lions Club - external renovations

Current projects

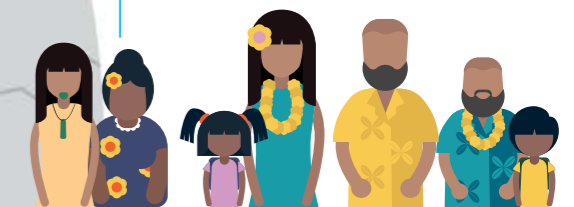
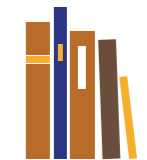
- 1 Avondale - develop new community centre and library - Te Hono
- 2 Chalmers Reserve - park development
- 3 Green Bay Domain - renew playground and associated park furniture
- 4 Blockhouse Bay Community Centre - renew roof and exterior of the building
- 5 Gittos Domain - renew park tracks (stage 2)
- 6 Ken Maunder Park - renew sports fields 1 & 2
- 7 New Lynn Community Centre - renew toilets, kitchen and ventilation
- 8 Sister Rene Shadbolt Park - renew sports field 1
- 9 Gittos Domain - refurbish amenity block

Map legend

- Local board office
- Public open space (Unitary Plan)
- Motorway
- Major road
- Arterial road
- Medium road
- Minor road



We are home to more than **90** local parks and **3** libraries



A diverse population with:
11% identified as Māori
38% identified as European
42% identify as Asian
20% identify as Pasifika

Includes the major town centres of **Avondale** and **New Lynn**



Data sources: Stats NZ Population Estimates, as at 30 June 2023

Tā mātou pūrongo whakahaere mahi

Our performance report

Local Community Services

Highlights included Chalmers Reserve and Green Bay Domain playground renewals, and the installation of the basketball halfcourt and the sports field renewal at Archibald Park. Te Whau Pou has been installed near the Rata Street bridge and marks the gateway into New Lynn. All Whau Hubs and Houses began resilience planning for their local areas, the Whau Youth Board delivered the Whau Youth Awards, and placemaking and youth initiatives were delivered. We provided ongoing support to our diverse communities through the Whau Ethnic Collective and Whau Pasifika Trust and continued our commitment to engage with mana whenua. The board also provided discretionary funding to lift levels of service with extended library hours at New Lynn, Avondale and Blockhouse Bay Libraries.

KEY ● Achieved ● Substantially achieved ● Not achieved *Measures favourably/unfavourably impacted by COVID-19
For more information on our service performance judgements and assumptions please refer to pages 166-167 of Volume 1 of the annual report.

Provide safe, reliable and accessible social infrastructure for Aucklanders that contributes to placemaking and thriving communities

Percentage of Aucklanders that feel their local town centre is safe - day time

The result was below target, but on par with the previous year. Comments in the residents' survey show a mixed perception of daytime safety, but overall, it is not improving with retail crime and incidents at transport hubs reflecting their concern.

Result against target		●
Target 2024		68%
Result	2024	51%
	2023	51%
	2022	62%

Percentage of Aucklanders that feel their local town centre is safe - night time

The result was below target but showed some improvement on the previous year. The residents' survey shows that, in general, people do not feel safe for themselves or their children at night time, especially around the New Lynn transport hub.

Result against target		●
Target 2024		33%
Result	2024	21%
	2023	17%
	2022	23%

Utilising the Empowered Communities Approach, we support Aucklanders to create thriving, connected and inclusive communities

The percentage of Empowered Communities activities that are community led¹

Whau Local Board has exceeded its target and improved on the previous year result. It continues to produce community-led empowerment activities that are successful and encourage communities to engage. Creative Souls is an example of a locally-driven arts project to support opportunities for Māori, Pacific and diverse young people.

Result against target		●
Target 2024		65%
Result	2024	79%
	2023	75%
	2022	98%

The percentage of Empowered Communities activities that build capacity and capability to assist local communities to achieve their goals¹

The percentage of Whau Local Board activities that build capacity and capability matched their target, but a decline in comparison to previous financial year. Community leadership programme, Pacific and Ethnic voices, Whau Seniors events and working with our youth are all examples of increasing resilience, knowledge and capabilities.

Result against target		●
Target 2024		80%
Result	2024	80%
	2023	88%
	2022	81%

We provide safe and accessible parks, reserves, beaches, recreation programmes, opportunities and facilities to get Aucklanders more active, more often

The percentage of park visitors who are satisfied with the overall quality of sportsfields

At Ken Maunders Park for example, a lot of negative comments were received from the cricket club and Auckland cricket regarding the outfield is not performing well enough for premier cricket which was patchy and slow. The football club were also impacted by closure of fields due to drainage issues. From across all cultural demographics, Māori are more likely to visit a sports park to play.

Result against target		●
Target 2024		75%
Result	2024	67%
	2023	74%
	2022	73%*

The percentage of users who are satisfied with the overall quality of local parks

Satisfaction increased by 4 per cent from last years result however is still below target. A wet winter 2023 and a settled period between January - May 2024 meant visitation have varied. Storm damage recovery work may have also impacted result.

Result against target		●
Target 2024		70%
Result	2024	65%
	2023	61%
	2022	68%*

The percentage of residents who visited a local park in the last 12 months

Result against target		●
Target 2024		80%
Result	2024	80%
	2023	81%
	2022	84%

We showcase Auckland's Māori identity and vibrant Māori culture

The percentage of local programmes, grants and activities that respond to Māori aspirations

Local arts programming increased in this financial year, however the percentage of programmes with Māori outcomes did not match this trend and declined. This was offset partly by a strong result for local and quick response grants responding to Māori aspirations (63 per cent), however, this was not enough to reach target.

Result against target		●
Target 2024		35%
Result	2024	28%
	2023	41%
	2022	27%*

We fund, enable and deliver services, programmes, and facilities (art facilities, community centres, hire venues, and libraries) that enhance identity, connect people, and support Aucklanders to participate in community and civic life

The number of internet sessions at libraries (unique sessions over public computing or public WIFI networks)

Library internet sessions surpassed expectations, improving on the strong performance reported at the end of last financial year. Internet sessions have increased by 29 per cent over last financial year comfortably exceeding target which was lowered to reflect reduction in library hours. Avondale Library showing the way with a 47 per cent increase on last year.

Result against target		●
Target 2024		251,764 ²
Result	2024	335,705
	2023	260,061
	2022	139,275*

The percentage of arts, and culture programmes, grants and activities that are community led

All arts and culture programmes were delivered by funded partners mostly by Te Toi Uku/Crown Lynn and Clayworks Museum, resulting in 100 per cent of the programmes being achieved.

Result against target		●
Target 2024		85%
Result	2024	100%
	2023	100%
	2022	100%

Local Community Services measures cont'd over

The percentage of art facilities, community centres and hire venues network that is community led

Result against target		●
Target 2024		67%
Result	2024	67%
	2023	67%
	2022	67%

The number of participants in activities at art facilities, community centres and hire venues

Participation at these facilities is under target but up 12 per cent compared to last year. Last years result was impacted by the January 2023 flooding events and this year numbers are showing a rise led by New Lynn Community centre, however, there was decreased participation at Blockhouse Bay Community centre which closed for two months due to refurbishments and Kelston Community Hub.

Result against target		●
Target 2024		383,800
Result	2024	356,818
	2023	318,256
	2022	158,723*

The number of visits to library facilities

Library visits were above target and above previous year result. Visitor numbers were on track to match target but in the last quarter exceeded target by 19 per cent. Avondale Library leading the way with a 26 per cent increase on last year.

Result against target		●
Target 2024		426,569 ²
Result	2024	438,237
	2023	397,390
	2022	249,471*

The percentage of attendees satisfied with a nominated local community event

The Waitangi@Waititi event was surveyed. Net satisfaction of 92 per cent is an excellent result. Well above target and represents a very high level of alignment with expectations of attendees. There was strong feedback on the positive atmosphere and family friendly environment. There was also good support for the music performance and range of food options.

Result against target		●
Target 2024		75%
Result	2024	92%
	2023	Not measured
	2022	New measured*

Percentage of customers satisfied with the quality of library service delivery

Whau Local Board Libraries continue to exceed the customer satisfaction target but a fraction down from previous years. The reduction in hours from February has had limited impact on customer satisfaction.

Result against target		●
Target 2024		80%
Result	2024	95%
	2023	96%
	2022	96%

1. This financial year, a reporting responsibility change and more diverse community delivery strategy have had an impact on reported results for a number of local boards. Although framework and direction were consistent with previous years, different interpretations have been applied by the new information providers. This has had a varying impact across different local boards, and has led to some variances in the current year results compared to the prior year.
 2. The Whau Local Board intend to reduce the operating hours at the Avondale, Blockhouse Bay and New Lynn libraries to meet their operating budget savings requirement for 2023/2024.

Local Planning and Development

We maintained our support and collaboration with our four business associations to improve local economic development, enhance employment initiatives and foster supportive and connected neighbourhoods within the board area.

We help attract investment, businesses and a skilled workforce to Auckland

The percentage of Business Associations meeting their Business Improvement District (BID) Partnership Programme obligations

All BIDs in the Whau Local Board complied with the BID Policy 2022.

Result against target		●
Target 2024		100%
Result	2024	100%
	2023	100%
	2022	100%

Local Environmental Management

Highlights during the year were the progress made on the Te Auaunga / Oakley Creek pest plant control buffer project working closely with community groups and Friends of Oakley Creek in identifying key properties. We supported EcoMatters programmes and events, such as Community Nurseries, Bike Hub, EcoHub, and EcoFest to educate, inspire, and encourage community shifts to more positive, sustainable choices. The Whau Wildlink programme supports local groups to improve water quality and biodiversity by removing pest plants and pest animals, planting native species, and streamside plantings.

We work with Aucklanders to manage the natural environment and enable low carbon lifestyles to build resilience to the effects of climate change

The percentage of local low carbon or sustainability projects that have successfully contributed towards local board plan outcomes

We successfully delivered six sustainability initiative projects for Whau in the 2023/2024 financial year. These projects (for example the New Lynn Bike Hub and the Whau Climate Action Network) have contributed towards the board’s environmental objectives as described in its local board plan.

Result against target		●
Target 2024		80%
Result	2024	100%
	2023	100%
	2022	100%

The percentage of local water quality or natural environment improvement projects that have successfully contributed towards local board plan outcomes

We successfully delivered four projects such as the Whau Community Pest Plant control buffer programme and continuation of the Whau Wildlink programme in the financial year. These projects have contributed towards the board’s environmental objectives as described in its local board plan.

Result against target		●
Target 2024		85%
Result	2024	100%
	2023	100%
	2022	100%

He whakamārama mō ā mātou mahi whakahaere

Our performance explained

Residents' concerns about the increase in incidents at our transport hubs saw around 50 people attending a community safety meeting at New Lynn Community Centre organised by Whau Ward Councillor Kerrin Leoni and the Whau Local Board. The meeting discussed the proactive security initiatives from various community groups and the next steps to improving feelings of safety. A key takeaway from the meeting was encouraging the public to actively report any observations of safety concerns while protecting their own safety, rather than just being a bystander or hoping that someone else will report it.



▲ Whau Youth Board Members. Photo credit: Shruthi Priya Balaji

While the actions of the authorities have been reassuring, we need a longer term, collaborative approach to making our communities safe for everyone.

The board is pleased to see active participation from agencies and members of the community in discussing safety issues and look forward to the ongoing collaboration between Police and other agencies to tackle this issue.

The power of young people has been acknowledged at the recent Whau Youth Awards.

Awards for their mahi (work), leadership and talent went to nine rangatahi (youth) and one local hero.

The annual awards, supported by Whau Local Board, honour rangatahi who live, work, play, and study in the Whau. Whau Local Board chair

Kay Thomas says: "Congratulations to all the nominees and winners. Their efforts and wonderful work in our communities deserve to be seen and celebrated."

"We're proud to support the Whau Youth Awards this year again. Rangatahi are the future of the Whau and we look forward to seeing what these exceptional young people do next."

Winner of the Arts Excellence Award, Allegra D'souza, says it was a humbling experience to be recognised alongside other talent in the Whau. "Being acknowledged for my achievements at the Whau Youth Awards was encouraging and heartening, especially to see the achievements of my peers being recognised. To see the talent in the room and be a part of that was such an honour and then to be the recipient of an award at the ceremony is something I'm very grateful for," says D'souza.

Whau Youth Board is a group of eight rangatahi aged 14 to 21. They hold two major annual events – the Whau Youth Fest and the Whau Youth Awards – and help with other community events to get young people more engaged with democratic processes.

◀ The power of young people has been acknowledged at the recent Whau Youth Awards. Awards for their mahi (work), leadership and talent went to nine rangatahi (youth) and one local hero.



Te āhuatanga ā-rohe

Local flavour

New basketball court a slam dunk for Whau

It's time to hone your basketball skills and shoot some hoops at the newly opened Archibald Park basketball court in Kelston.

Whau Local Board officially opened the court in early November with a blessing and light refreshments for the community.

Located adjacent to the existing Archibald Park playground, the new court is equipped with two back-to-back half courts and high five seats for the community to enjoy the increasingly popular sport.

"We knew there was a real gap in provision of a basketball court in the area and we have been pleased to deliver it, so our kids can play in their own neighbourhood."

"Personally, because of the time I spent teaching at Kelston Girls' College up until four years ago, Kelston is an area dear to my heart," says Kay.

Kay also thanked council staff and community groups for their help with the basketball court.

"I'd like to give a shout-out to our Parks and

Community Facilities team for their hard work. The wet weather conditions early this year created a lot of challenges, leading to the redesign of the court to ensure better on-site drainage.

"Our community groups, including Kelston Community Hub, New Windsor Community Hub, Sport Waitākere, and our local board staff, also contributed significantly. Without their help, we wouldn't have been able to host such a lovely event," Kay adds.

As part of Auckland Council's and Whau Local Board's commitment to

Kelston, the existing Archibald Park playground was opened in 2020. At the opening event, some members of the public approached Chair Kay Thomas about the need for a basketball court.

Whau Local Board then worked with council staff and advised board members two half courts would be more use than one full court. They asked the half courts to be designed and built with the potential to convert them to full courts in the future.



▲ Archibald Park Basketball Court in action

Whau Local Board chair Kay Thomas is delighted to see the completion of the court and proud for the board to be able to deliver it for the community.

"Everyone on the board is thrilled to see the much-anticipated basketball court ready ahead of the summer holiday season. We believe this facility will be much loved by the locals, as our young Kelstonians have already been using the court before the official opening."

Te tahua pūtea

Funding impact statement

Financial year ending 30 June 2024

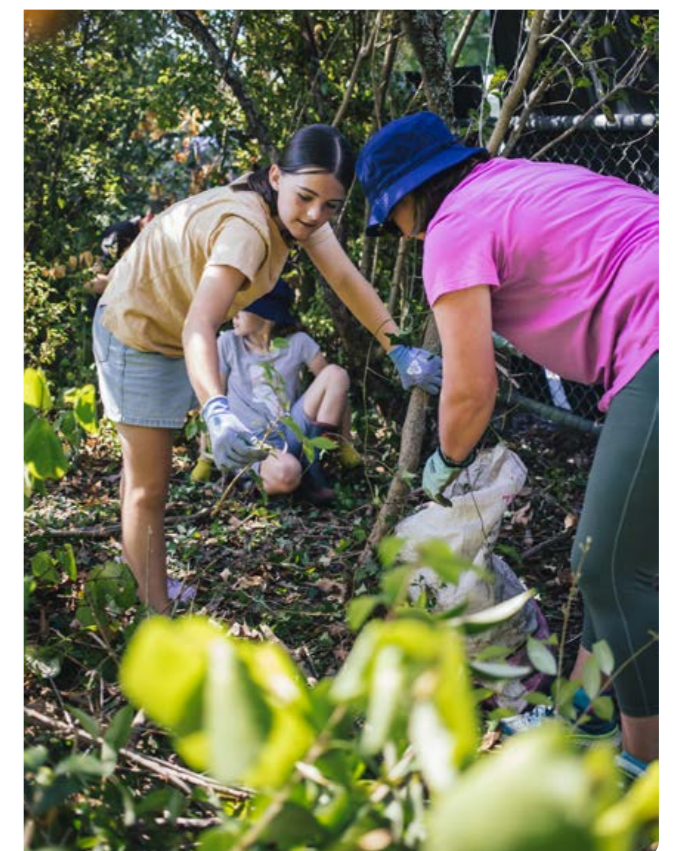
\$000s	Notes	Actual 2023/2024	Annual Plan 2023/2024	Annual Plan 2022/2023
Sources of operating funding:				
General rates, UAGCs, rates penalties		16,769	16,769	15,241
Targeted rates		909	940	925
Subsidies and grants for operating purposes		56	27	27
Fees and charges		202	247	264
Local authorities fuel tax, fines, infringement fees and other receipts		54	98	118
Total operating funding		17,989	18,080	16,575
Applications of operating funding:				
Payments to staff and suppliers	1	13,290	12,505	11,368
Finance costs		2,921	2,921	2,766
Internal charges and overheads applied		2,019	2,019	2,236
Other operating funding applications		0	0	0
Total applications of operating funding		18,230	17,446	16,370
Surplus (deficit) of operating funding		(242)	635	205
Sources of capital funding:				
Subsidies and grants for capital expenditure		0	0	0
Development and financial contributions		0	0	0
Increase (decrease) in debt	2	4,102	12,464	16,048
Gross proceeds from sale of assets		0	0	0
Lump sum contributions		0	0	0
Other dedicated capital funding		0	0	0
Total sources of capital funding		4,102	12,464	16,048
Application of capital funding:				
Capital expenditure:	3			
- to meet additional demand		(1,728)	208	11,671
- to improve the level of service		752	7,397	556
- to replace existing assets		4,836	5,494	4,026
Increase (decrease) in reserves		0	0	0
Increase (decrease) in investments		0	0	0
Total applications of capital funding		3,860	13,099	16,253
Surplus (deficit) of capital funding		242	(635)	(205)
Funding balance		0	0	(0)

Variance explanation Actual 2023/2024 to Annual Plan 2023/2024

1. Payments to staff and suppliers were above plan mainly due to higher maintenance costs for parks, open spaces and community facilities. In the first half of the year contractors incurred higher repairs and maintenance associated with storm damage.
2. While partly offset by higher than planned payments to staff and suppliers, capital expenditure was lower than planned. This resulted in a funding surplus which meant that less debt funding was required than planned.
3. Capital expenditure was below plan primarily due to section 2 of the Te Whau Pathway (across the Whau river from Sandy Lane to Ken Maunder Reserve) being halted as work had to be de-scoped as external funding was insufficient to complete both section 2 and section 5 of Te Whau pathway. Additionally, the replacement of Te Hono (Avondale Community Centre and Library) was put on hold due to funding constraints, which have now been resolved, and the detailed design is nearing completion.



▲ Whau Pasifika Festival 2023



► Dundale Weeding Bee 2024

Auckland Council disclaims any liability whatsoever in connection with any action taken in reliance of this document for any error, deficiency, flaw or omission contained in it.

ISSN 2624-2214 (Print)
ISSN 2624-2222 (PDF)