




0 385 770 1,540 Meters

Whilst due care has been taken, Auckland Council gives no warranty as to the accuracy and completeness of any information on this map/plan and accepts no liability for any error, omission or use of the information.

Tranche 2 - Sites of Significance to Mana Whenua

Site Name - Te Wai o Ruarangi / Oruarangi Awa and Waitomokia Creek
 Site ID - 0125



 Tranche 2 - nominated sites extent


NPSUD Zone

 Business - Light Industry Zone

 Coastal - Coastal Transition Zone

 Coastal - General Coastal Marine Zone

 Green Infrastructure Corridor

 Open Space - Conservation Zone

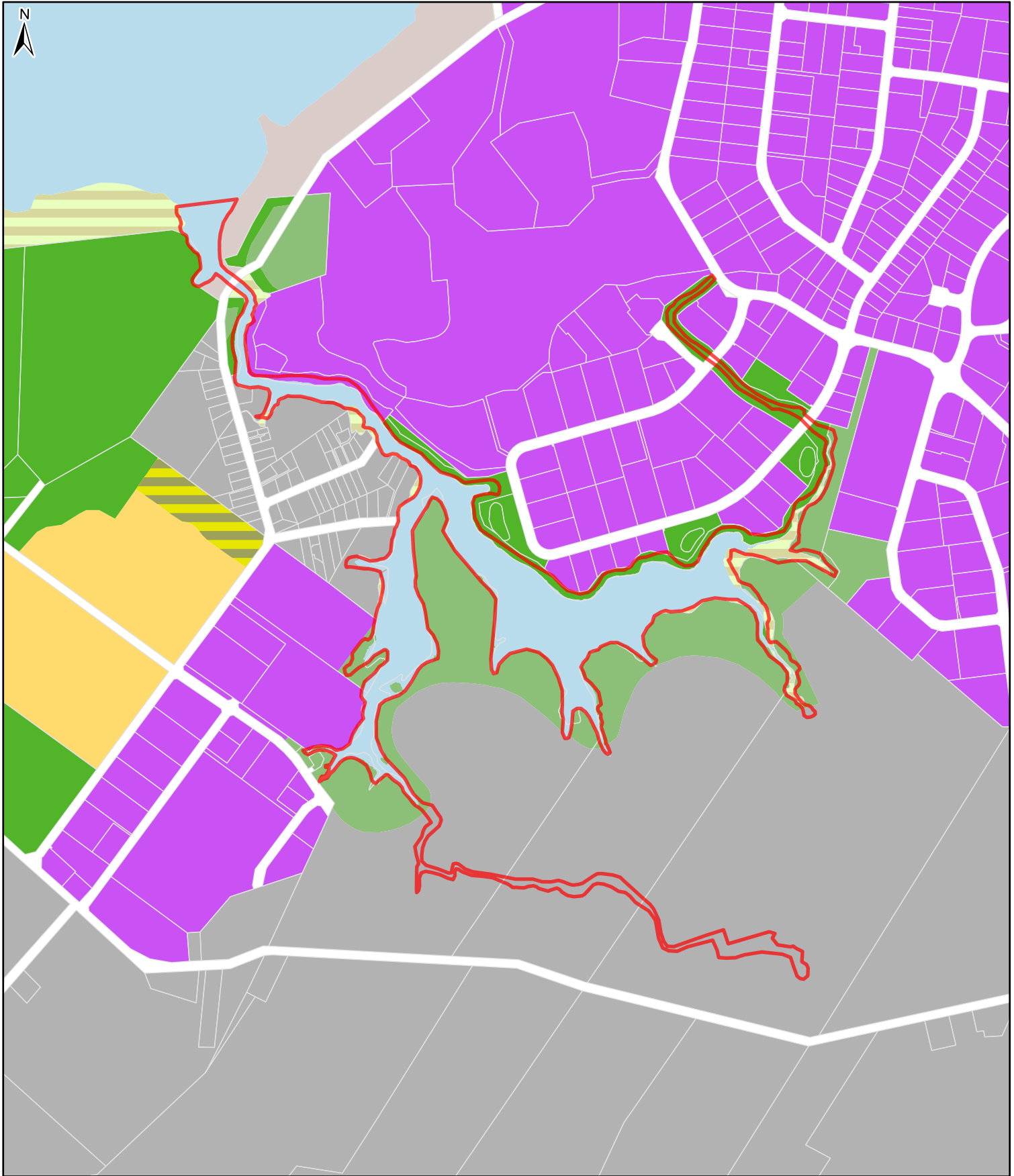
 Open Space - Informal Recreation Zone

 Residential - Mixed Housing Suburban Zone

 Road

 Rural - Rural Production Zone

 Special Purpose Zone



0 385 770 1,540 Meters

Whilst due care has been taken, Auckland Council gives no warranty as to the accuracy and completeness of any information on this map/plan and accepts no liability for any error, omission or use of the information.

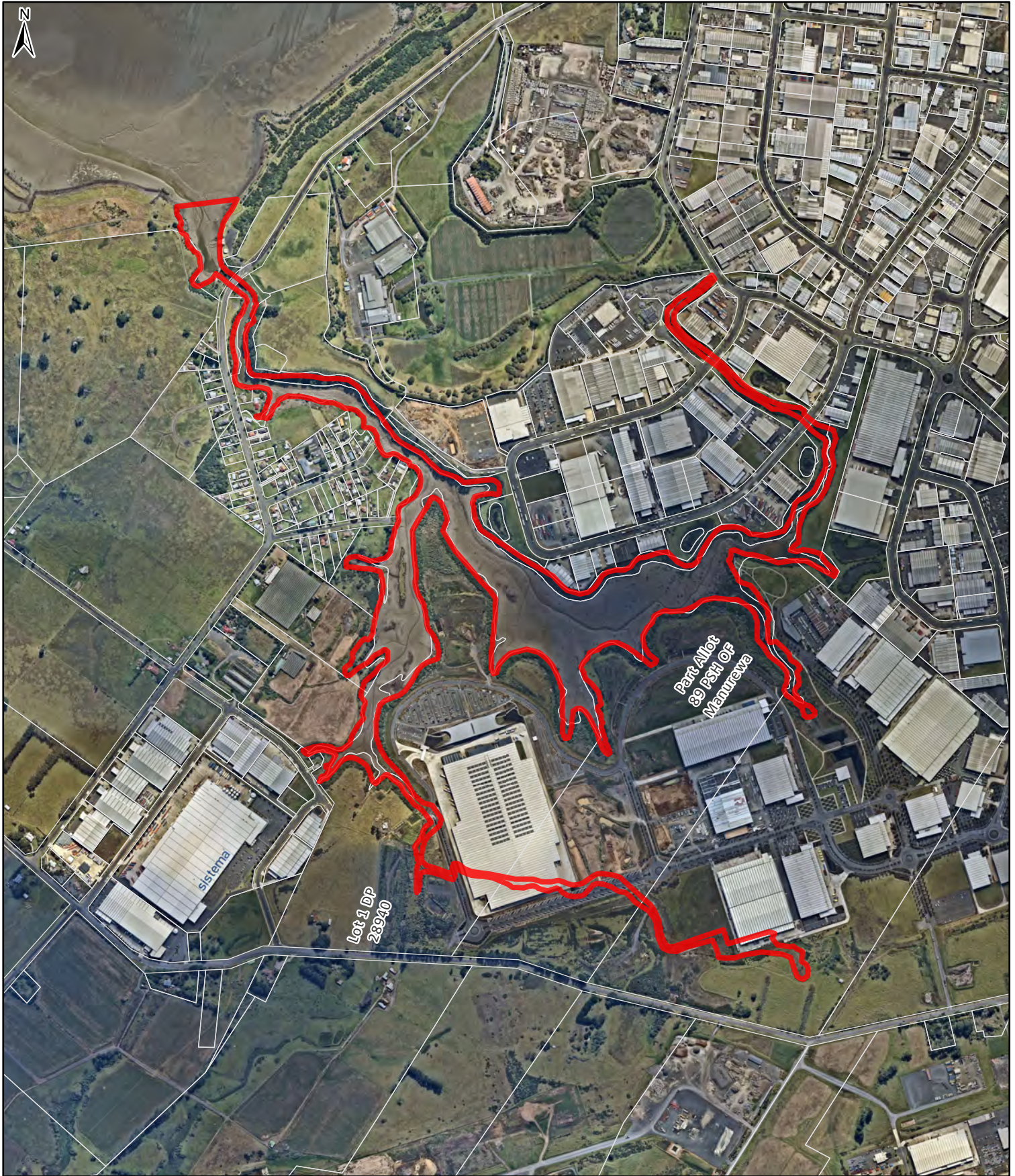
Tranche 2 - Sites of Significance to Mana Whenua

Site Name - Te Wai o Ruarangi / Oruarangi Awa and Waitomokia Creek

Site ID - 0125



- | | | |
|---|---|---|
| Tranche 2 - nominated sites extent | Open Space - Informal Recreation Zone | Special Purpose Zone |
| Unitary Plan Zones | Business - Light Industry Zone | Coastal - General Coastal Marine Zone [rcp] |
| Residential - Mixed Housing Suburban Zone | Green Infrastructure Corridor (Operative in some Special Housing Areas) | Coastal - Coastal Transition Zone |
| Open Space - Conservation Zone | Rural - Rural Production Zone | Road [i] |




0 385 770 1,540 Meters

Tranche 2 - Sites of Significance to Mana Whenua

Site Name - Te Wai o Ruarangi / Oruarangi Awa and Waitomokia Creek
 Site ID - 0125



Whilst due care has been taken, Auckland Council gives no warranty as to the accuracy and completeness of any information on this map/plan and accepts no liability for any error, omission or use of the information.

 Tranche 2 - nominated sites extent





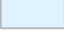
0 385 770 1,540 Meters

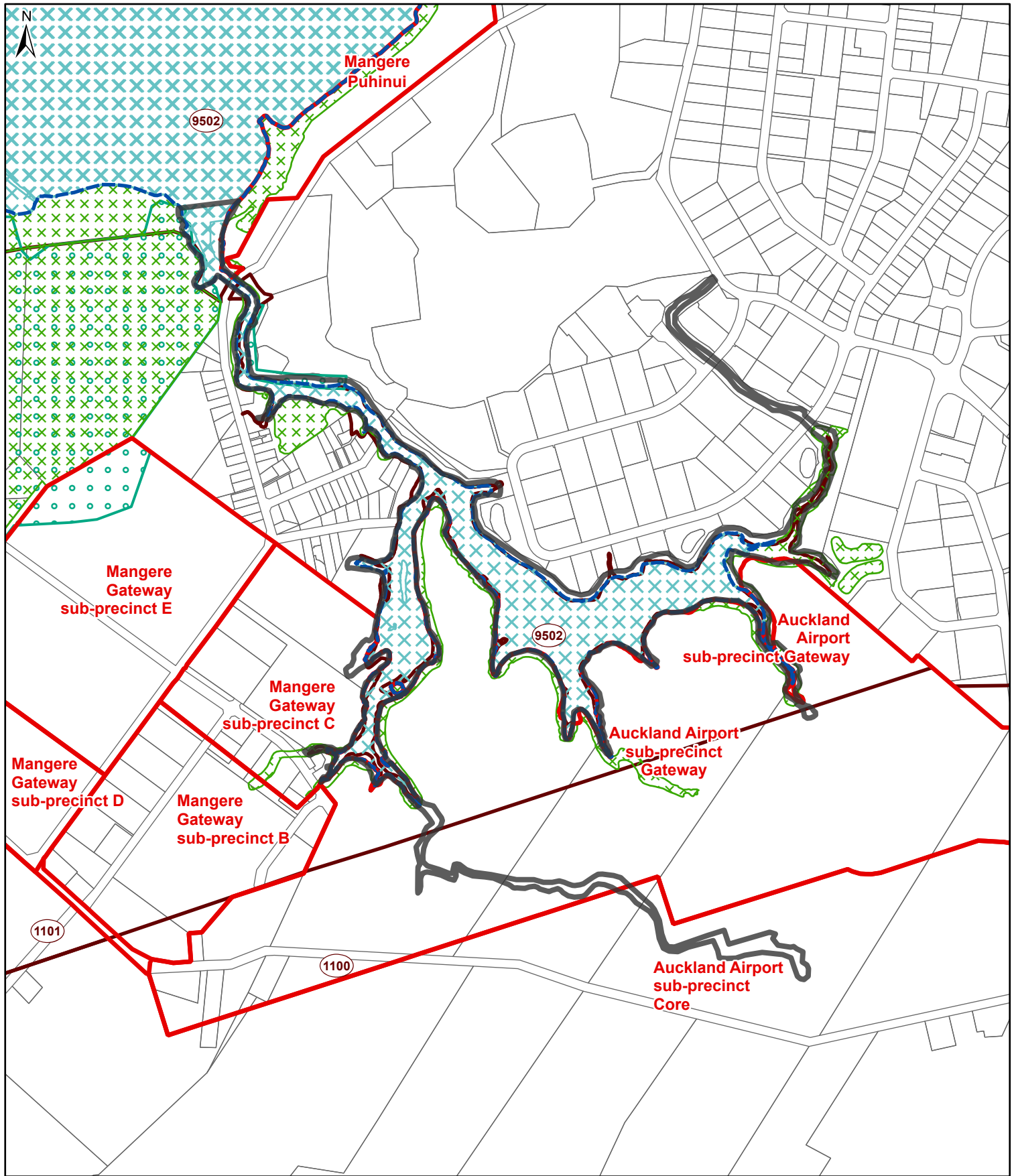
Whilst due care has been taken, Auckland Council gives no warranty as to the accuracy and completeness of any information on this map/plan and accepts no liability for any error, omission or use of the information.

Tranche 2 - Sites of Significance to Mana Whenua

Site Name - Te Wai o Ruarangi / Oruarangi Awa and Waitomokia Creek
Site ID - 0125



- | | | | |
|--|------------------------------------|---|--|
|  | Tranche 2 - nominated sites extent |  | Auckland International Airport Limited |
|  | Auckland Council |  | Watercare Services Limited |
| | |  | Private land |



Tranche 2 - Sites of Significance to Mana Whenua

Site Name - Te Wai o Ruarangi / Oruarangi Awa and Waitomokia Creek
 Site ID - 0125



Whilst due care has been taken, Auckland Council gives no warranty as to the accuracy and completeness of any information on this map/plan and accepts no liability for any error, omission or use of the information.

- Tranche 2 - nominated sites extent
- Indicative Coastline (i)
- Precincts
- Marine 2
- Outstanding Natural Features Overlay
- Designations

Significant Ecological Areas Overlay

- Terrestrial