

Auckland Council District Plan

Hauraki Gulf Islands Section Operative 2018

PROPOSED PLAN MODIFICATION 15 (PPM15)

Sites and Places of Significance to Mana Whenua

Tranche 2a

Public notification: 23 May 2024

Close of submissions: 21 June 2024

This is a council initiated plan change

Explanatory note – not part of proposed plan change

This plan modification seeks to recognise and protect the tangible and intangible Māori cultural values of five Māori Heritage Sites on Aotea / Great Barrier Island to provide for the relationship of mana whenua with their cultural heritage.

Plan change provisions

Note:

Amendments proposed by this plan change to the Auckland Unitary Plan are underlined for new text and ~~strikethrough~~ where existing text is proposed to be deleted. The use of indicates that there is more text, but it is not being changed. These are used when the whole provisions if too long to be included.

Plan Modification 12

Proposed amendments to Part 7.13

Maori heritage

Notes:

1. New text is shown as underlined and deleted text as ~~striketrough~~.
2. Some existing text is shown to place the changes in context.

7.13 Maori heritage

The relationship of Maori and their culture and traditions to their ancestral lands, sites, waterways, waahi tapu, wai tapu, and other taonga is of national importance under the RMA. The Plan must therefore recognise and provide for that relationship. This can be done by identifying sites and areas of significance to Maori, and establishing appropriate protection.

At the time of notification of the Plan, Maori heritage sites were not included because essential information collected by the council about archaeological sites had not yet been considered by iwi. This information will assist iwi to determine which Maori heritage sites or areas to request for inclusion in the Plan, whether these are archaeological sites or not.

In consultation with tangata whenua, a variation or change to the Plan may be introduced to identify, protect, and recognise such sites in accordance with good RMA practice and the principles of Te Tiriti o Waitangi. These sites may include waahi tapu, tauranga waka, urupa, kauhanga riri, mahinga maataitai, wai tapu and other taonga. (Refer to clause 7.17 for a glossary of Maori terms).

The custody of privileged information about Maori heritage sites will be retained and managed by identified heritage staff within the council. It will be held in a form that is not at risk of disclosure (unless this has been specifically authorised by iwi on a case-by-case basis). At the same time, landowners need to be provided with sufficient information about acceptable activities on the sites so as to maximise protection of the sites without unnecessarily constraining the activities of landowners.

The Plan will accurately identify all sites that iwi request be protected under the Plan. The council will work with iwi to develop criteria and protocols applicable to the individual sites or areas.

7.13.1 Issue

How to ensure that Maori heritage sites are not accessed or modified in such a way that detracts from their cultural value.

7.13.2 Objective

To recognise and protect sites of spiritual, cultural or tikanga value to Maori.

Policies

1. By identifying and protecting, in consultation and partnership with tangata whenua, significant Maori spiritual, cultural or tikanga sites.
2. By avoiding a reduction in the historical, cultural and spiritual values associated with Maori heritage sites.
3. By ensuring that tangata whenua (and other relevant iwi authorities) will be consulted over the use, development or protection of natural and physical resources where these affect Maori heritage sites.

7.13.3 Criteria for scheduling Maori heritage sites

To determine whether a site is worthy of protection in the Plan, potential sites have been evaluated against the criteria listed in [appendix 4 – Criteria for scheduling Maori heritage sites](#).

7.13.4 Rules for Maori heritage sites

7.13.4.1 Permitted activities

The following are permitted activities for Any activity or work located within an area scheduled as a Maori heritage site ~~which does not involve either of:~~

1. ~~ground disturbance~~ earthworks (excluding within Area A of Land Unit - Open Space 3 (Rangihoua Park) ~~earthworks~~ for parks maintenance and the use of park facilities limited to areas and ground depths which have previously been disturbed or modified ~~and which comply with the earthworks development controls in Part 10e).~~
2. gardening for domestic purposes.
3. earthworks for the maintenance and repair of fences and effluent disposal systems limited to areas and ground depths which have previously been disturbed or modified.
4. earthworks for the maintenance and repair of existing farming, walking and cycling tracks limited to areas and ground depths which have previously been disturbed or modified.
5. earthworks for the operation, maintenance and repair of driveways and parking areas limited to areas and ground depths which have previously been disturbed or modified.
6. ~~toilets (including portaloos) or changing facilities.~~

7.13.4.2 Discretionary activities

~~Any activity or work within an area scheduled as a Maori heritage site which involves either or both of the following:~~ Except where provided for as a permitted activity in rule 7.13.4.1, the following are discretionary activities within the scheduled site surrounds of a Maori heritage site:

1. ~~ground disturbance~~ earthworks.
2. toilets (including portaloos) or changing facilities.

7.13.5 Assessment criteria for discretionary activities

The council's assessment of applications for a discretionary activity will include consideration of the following matters:

1. Whether the proposal is consistent with the objectives and policies for Maori heritage sites.
2. Whether the proposal has appropriate regard to the protocol for Maori heritage sites.
3. Whether an archaeological assessment has been undertaken to assess the archaeological values of the site.
4. Whether the modification is necessary, and any alternative methods available to the applicant for carrying out the work and activities.
5. Whether there has been consultation with the relevant tangata whenua.
6. Whether tangata whenua will have access to the site for karakia and monitoring.

7.14.1

Proposed amendments to Appendix 2f

Schedule of Maori heritage sites -outer islands

Notes:

1. New text and diagram is shown as underlined and deleted text as ~~striketrough~~.
2. Some existing text is shown to place the changes in context.

Appendix 2f

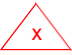
Schedule of Maori heritage sites - outer islands

<u>Contents</u>	Page
<u>1.0 Introduction</u>	<u>2</u>
<u>2.0 Key to reasons for scheduling Maori heritage sites</u>	<u>2</u>
<u>3.0 Diagrams of scheduled Maori heritage sites</u>	<u>3</u>

~~There are currently no Maori heritage sites scheduled in the outer islands. It is noted that there are numerous sites scheduled in the Plan that have both archaeological and Maori values. Refer to clause 7.13 for further information.~~


Plan modification annotations

- |



indicates where content is affected by proposed plan modification x.
refer to plan modification folder or website for details.

- |



indicates where the content is part of plan modification x, which is
subject to appeal.
Underlined content to be inserted.
~~Struck through~~ content to be deleted.

1.0 Introduction

This appendix contains key information about scheduled Maori heritage sites. In particular it identifies:

- The location of scheduled sites, including the site surrounds.
- A brief description of the sites.
- The reasons for scheduling the sites.

Scheduled Maori heritage sites are shown on the planning maps. Part 7 - Heritage contains the objectives, policies and rules applying to such sites.

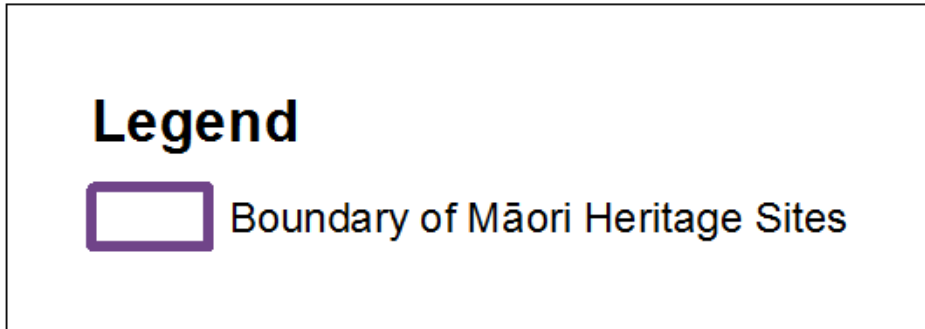
Section 3.0 of this appendix contains diagrams of the scheduled sites.

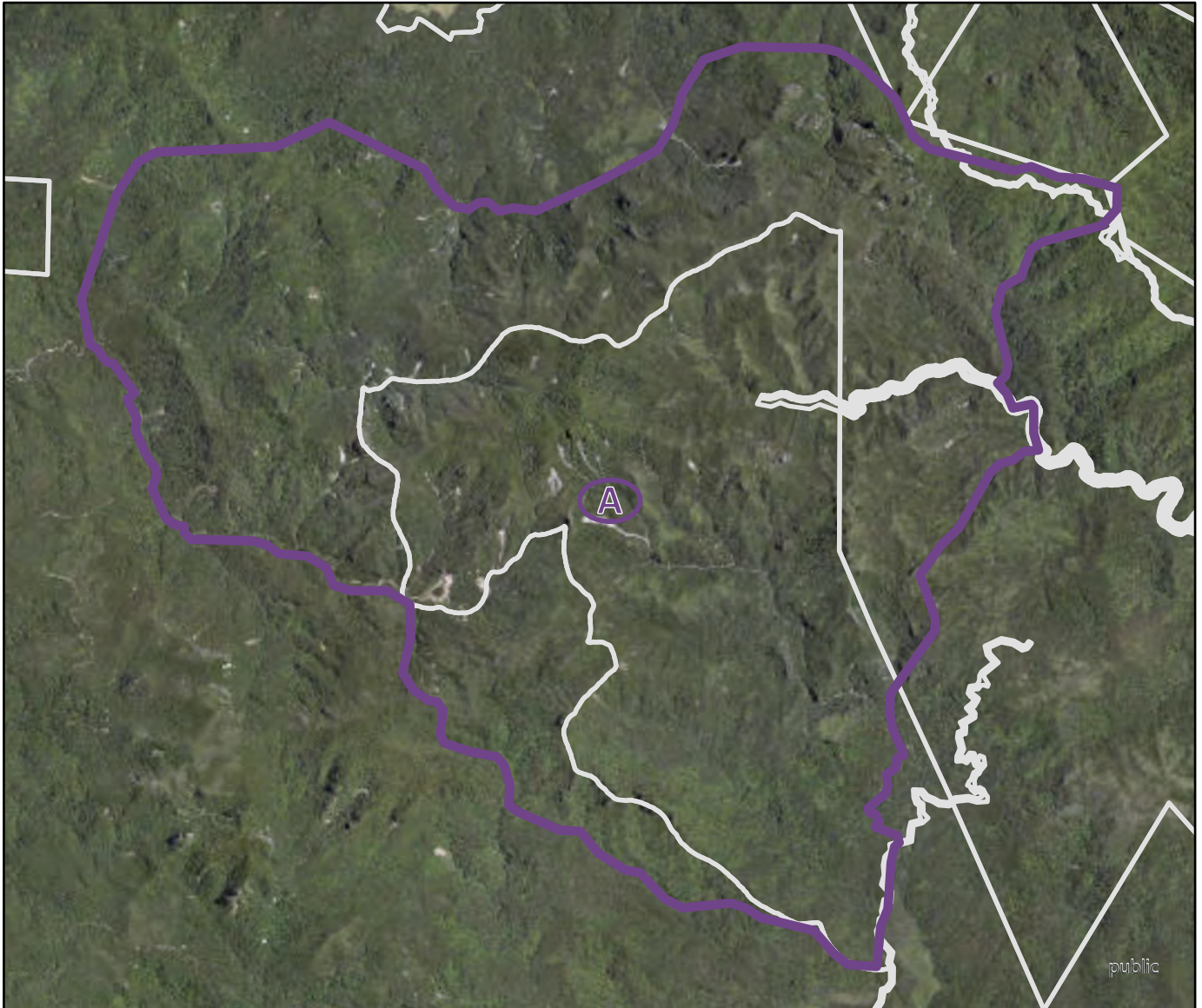
2.0 Key to reasons for scheduling Maori heritage sites

The reasons relate to the criteria identified in appendix 4 - Criteria for scheduling Maori heritage sites. The factors used to identify and evaluate sites for scheduling as Maori heritage sites are located in Chapter B6 of the Regional Policy Statement in the Auckland Unitary Plan (Operative in Part) 2016. These factors are listed below:

<u>Factor</u>	<u>Description</u>
<u>Mauri</u>	<u>ko te mauri me te mana o te wāhi, te taonga rānei, e ngākaunuitia ana e te Mana Whenua. The mauri (life force and life-supporting capacity) and mana (integrity) of the place or resource holds special significance to Mana Whenua.</u>
<u>Wāhi tapu</u>	<u>ko tērā wāhi, taonga rānei he wāhi tapu, arā, he tino whakahirahira ki ngā tikanga, ki ngā puri mahara, o ngā wairua a te Mana Whenua. The place or resource is a wāhi tapu of special, cultural, historic, metaphysical and or spiritual importance to Mana Whenua.</u>
<u>Kōrero Tūturu/historical</u>	<u>ko tērā wāhi e ngākaunuitia ana e te Mana Whenua ki roto i ōna kōrero tūturu. The place has special historical and cultural significance to Mana Whenua.</u>
<u>Rawa Tūturu/customary resources</u>	<u>he wāhi tērā e kawea ai ngā rawa tūturu a te Mana Whenua. The place provides important customary resources for Mana Whenua.</u>
<u>Hiahiatanga Tūturu/customary needs</u>	<u>he wāhi tērā e eke ai ngā hiahia hinengaro tūturu a te Mana Whenua. The place or resource is a repository for Mana Whenua cultural and spiritual values.</u>
<u>Whakaaronui o te Wa/contemporary esteem</u>	<u>he wāhi rongonui tērā ki ngā Mana Whenua, arā, he whakaahuru, he whakawaihanga, me te tuku mātauranga. The place has special amenity, architectural or educational significance to Mana Whenua.</u>

3.0 **Diagrams of scheduled Maori heritage sites**

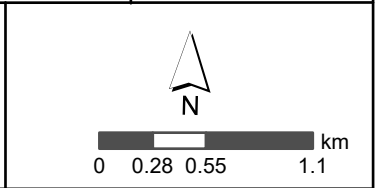




Māori Heritage	Name of item: Hirakimatā	Map reference: 48-A
----------------	---------------------------------	----------------------------

Island: Great Barrier
 Address: Aotea Road Great Barrier Island
 Auckland 0991

MHS A
 (Māori Heritage Site)



Description of Item

Maunga, wāhi tapu, wāhi tupuna





Māori Heritage	Name of item: Poutekorua	Map reference: 56-B
----------------	---------------------------------	-------------------------------

Island: Great Barrier Address: Parish AOTEA Schooner Bay Road Great Barrier Island Auckland 0991	<h1>MHS B</h1> <p>(Māori Heritage Site)</p>	
--	---	--

Description of Item

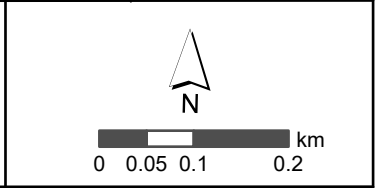
<p>Maunga, wāhi tapu, rohenga, pou whenua</p>	
---	--



Māori Heritage	Name of item: Ruahine	Map reference: 57-C
----------------	------------------------------	-------------------------------

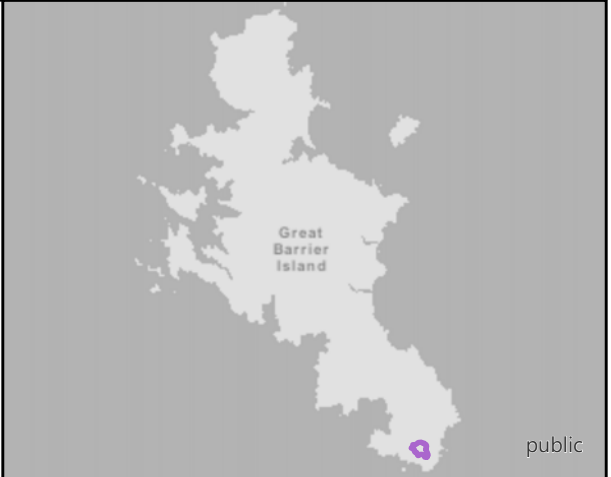
Island: Great Barrier
 Address: Allots NE39 SW47 Aotea Parish
 Cape Barrier Road Great Barrier Island
 0991

MHS C
 (Māori Heritage Site)



Description of Item

Maunga, wāhi tapu, pou whenua

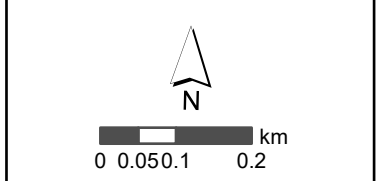




Māori Heritage	Name of item: Komahunga	Map reference: 43-D
----------------	--------------------------------	----------------------------

Island: Great Barrier
 Address: 270 Harataonga Road Great Barrier Island Auckland 0991

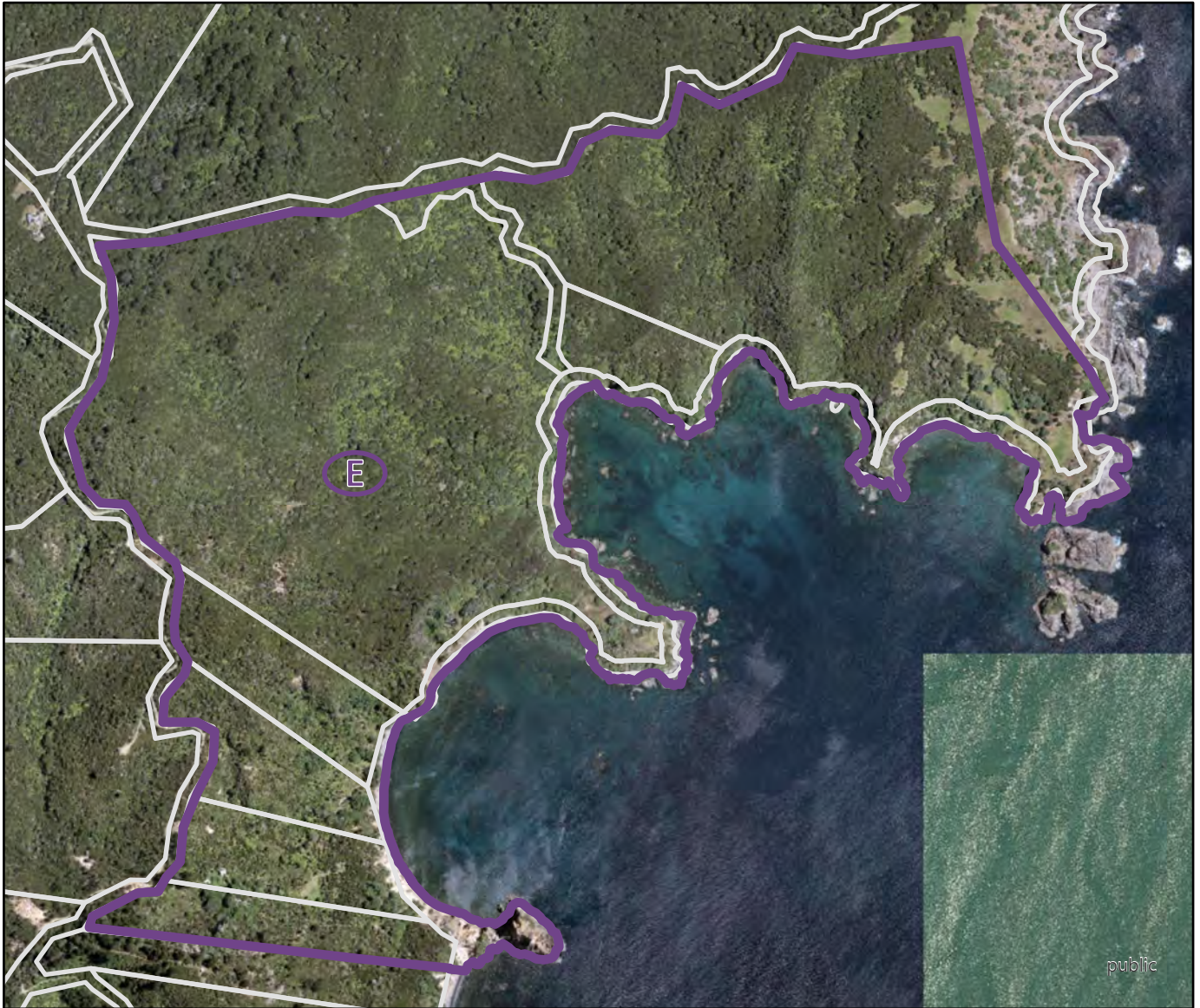
MHS D
 (Māori Heritage Site)



Description of Item

Wāhi tapu, pā and kāinga, wāhi tohu, wāhi tupuna

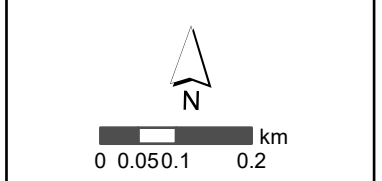




Māori Heritage	Name of item: Korotiti	Map reference: 50-E
----------------	-------------------------------	-------------------------------

Island: Great Barrier
 Address: 155 Omata Road Great Barrier
 Island Auckland 0991

MHS E
 (Māori Heritage Site)



Description of Item

Urupā, wāhi tapu, pā



Proposed amendments to the Hauraki Gulf Islands (planning maps)



Notes:

1. Add the Māori Heritage Site schedule to the planning maps for the following sites:
2. Add the Māori Heritage Site iconography to the Legend: Outer Islands






Auckland Council District Plan Hauraki Gulf Islands Section - Operative 2013

Legend: Outer islands

Map 1

-  Settlement areas
-  Significant ridgeline area

Land units






-  Landform 1 (coastal cliffs)
-  Landform 2 (dune systems and sand flats)
-  Landform 3 (alluvial flats)
-  Landform 4 (wetland systems)
-  Landform 5 (productive land)
-  Landform 6 (regenerating slopes)
-  Landform 7 (forest and bush areas)
-  Commercial 6 (quarry)
-  Commercial 7 (wharf)
-  Open space 1 (ecology and landscape)
-  Open space 2 (recreation and community facilities)
-  Conservation

Map 2


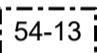
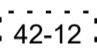


50-4 Map reference number


 54-9 Designated land

Scheduled items

-  54-9 Archaeological site
-  48-7 Building, object, property or place of special value
-  55-2 Site of ecological significance
-  55-5 Sensitive area
-  48 - A Māori Heritage Site

Other additional limitations

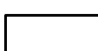
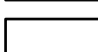
-  Contaminated or potentially contaminated land
-  54-13 Airfield protection fan
-  42-12 Airfield noise contour levels
-  Development Plan / Concept Plan
-  Airfield

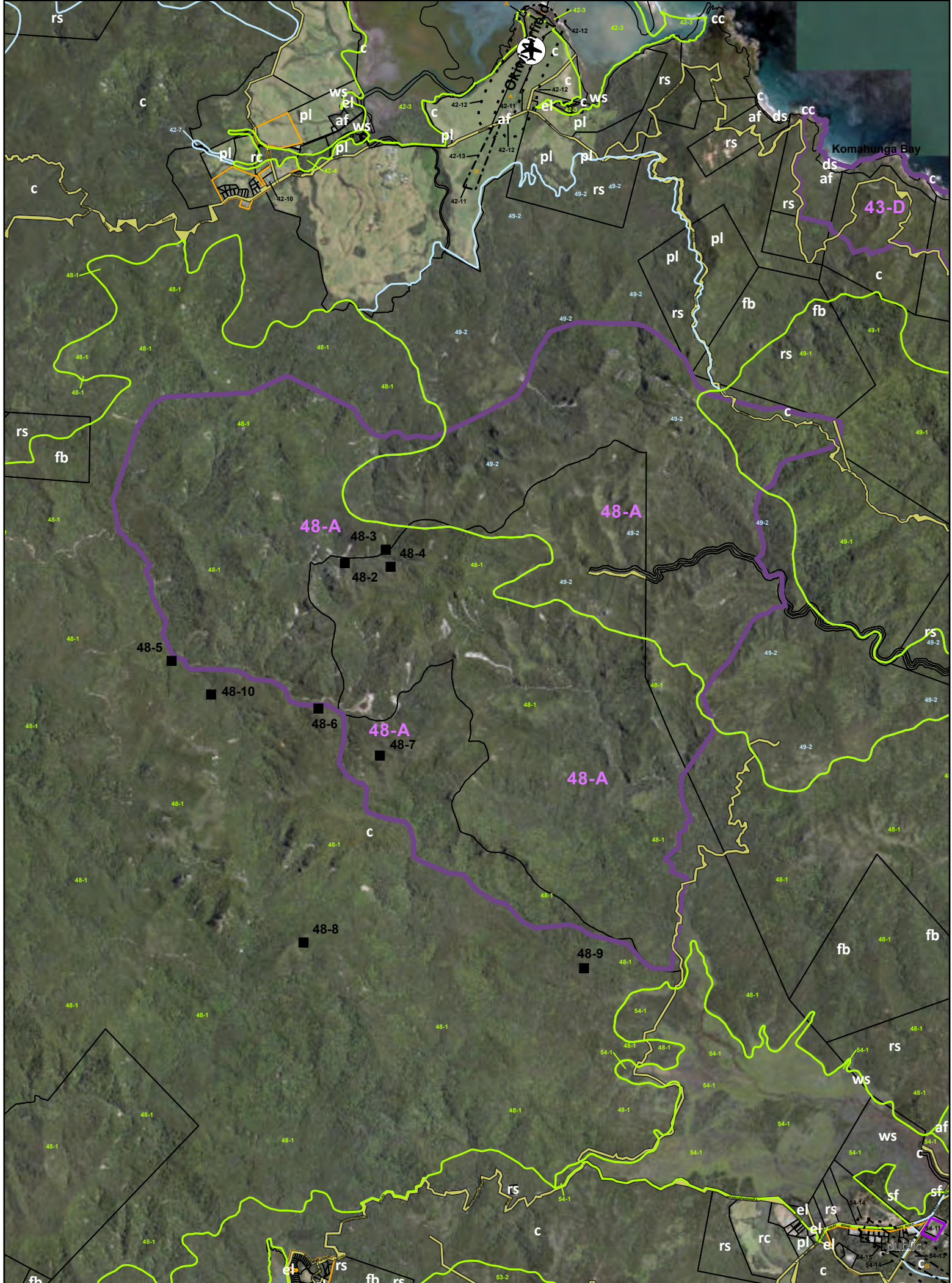
Roading  All public roads are subject to a notice of requirement

 Unformed road

Other

The "updated xx/xx/xxxx" date located bottom right of each sheet is the date that each sheet was updated by Council and not necessarily when the particular change was approved e.g the date on which a consent order was signed.

-  Property boundary
-  Coast



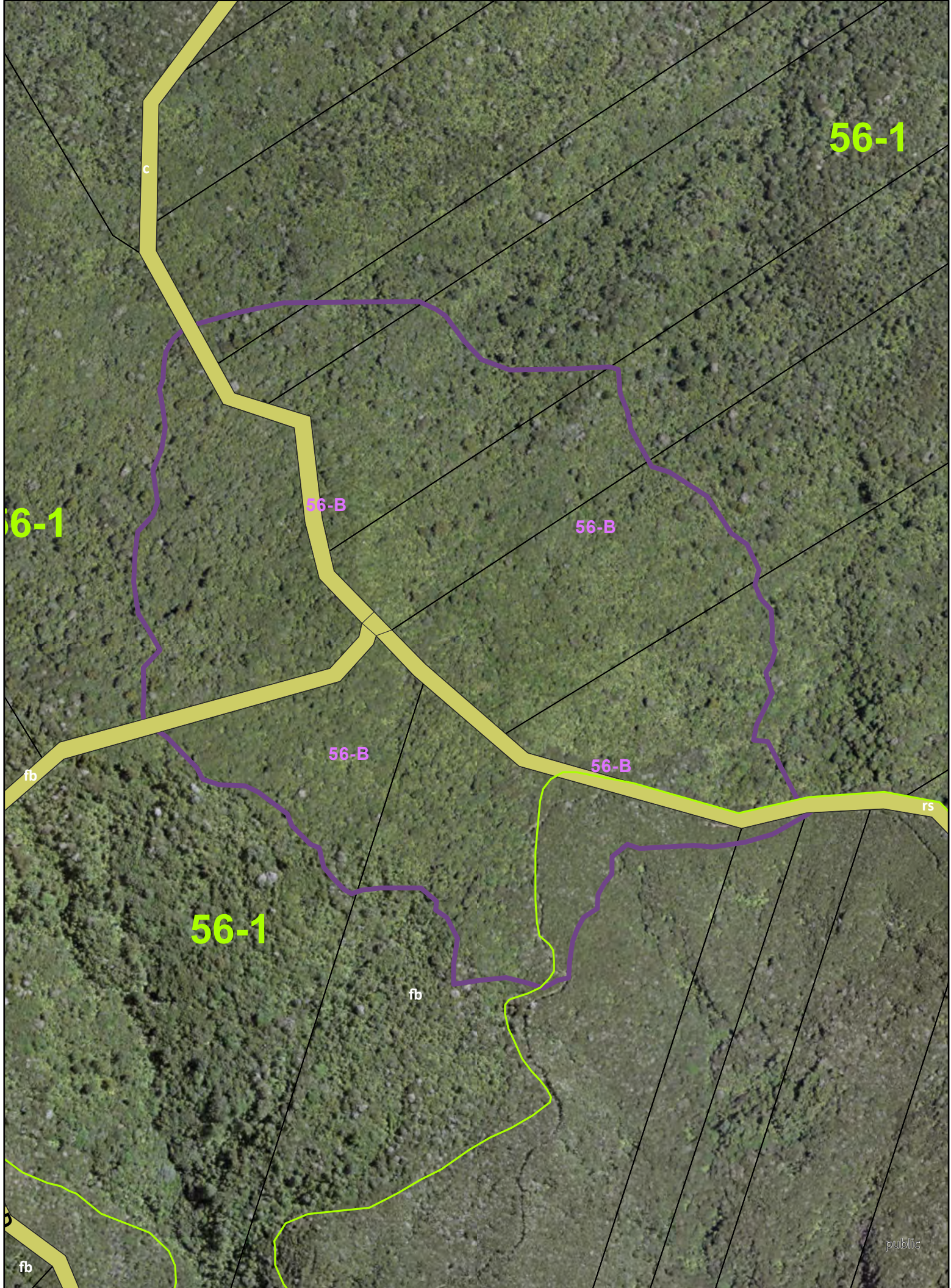
41	42	43
47	48	49
52	53	54

Scale:
1:15000 @ A3

Auckland Council District Plan - Hauraki Gulf Islands Section - Operative



Sheet
Map no. 1



56-1

56-1

56-B

56-B

56-B

56-B

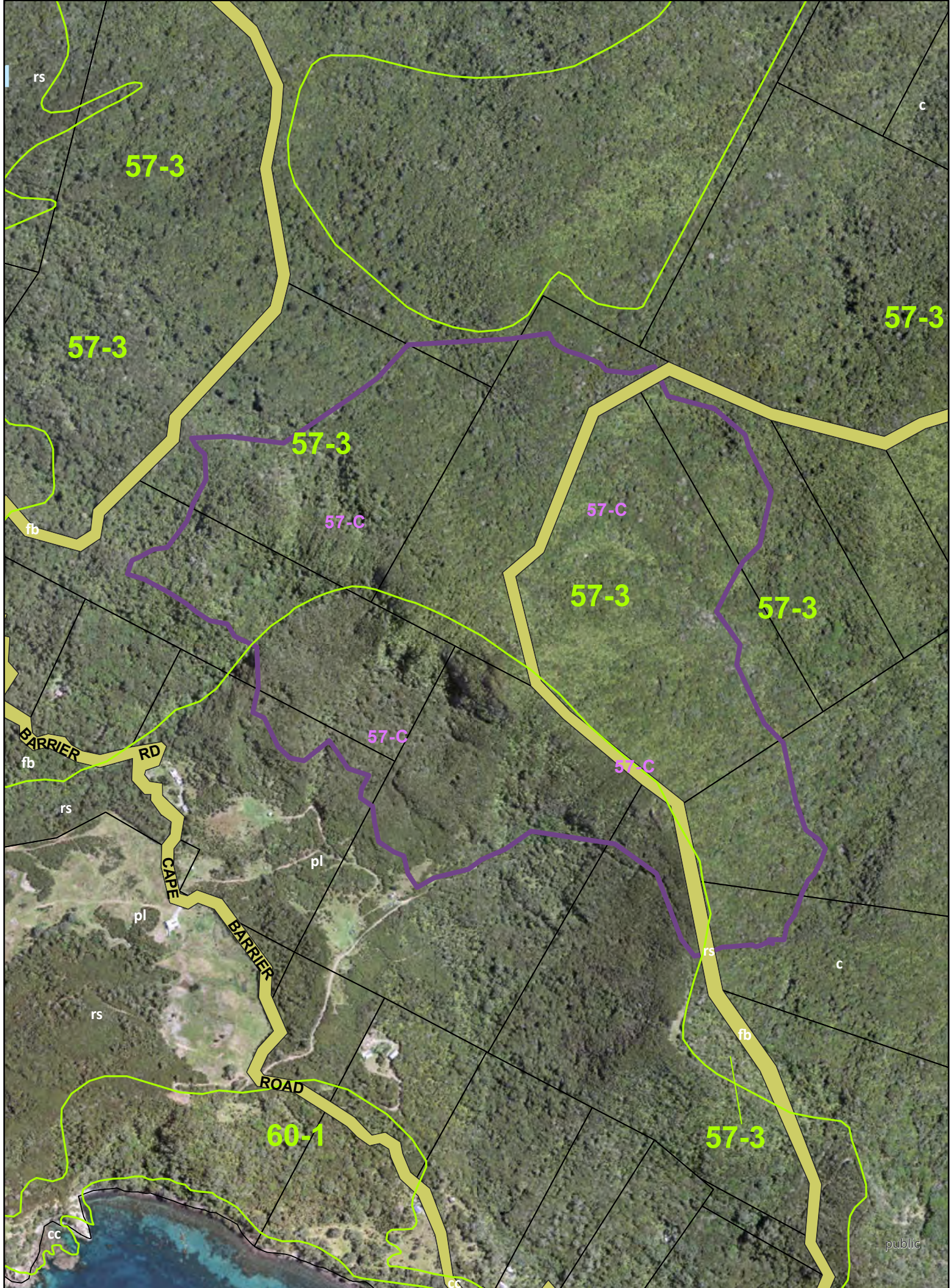
56-1

fb

rs

public





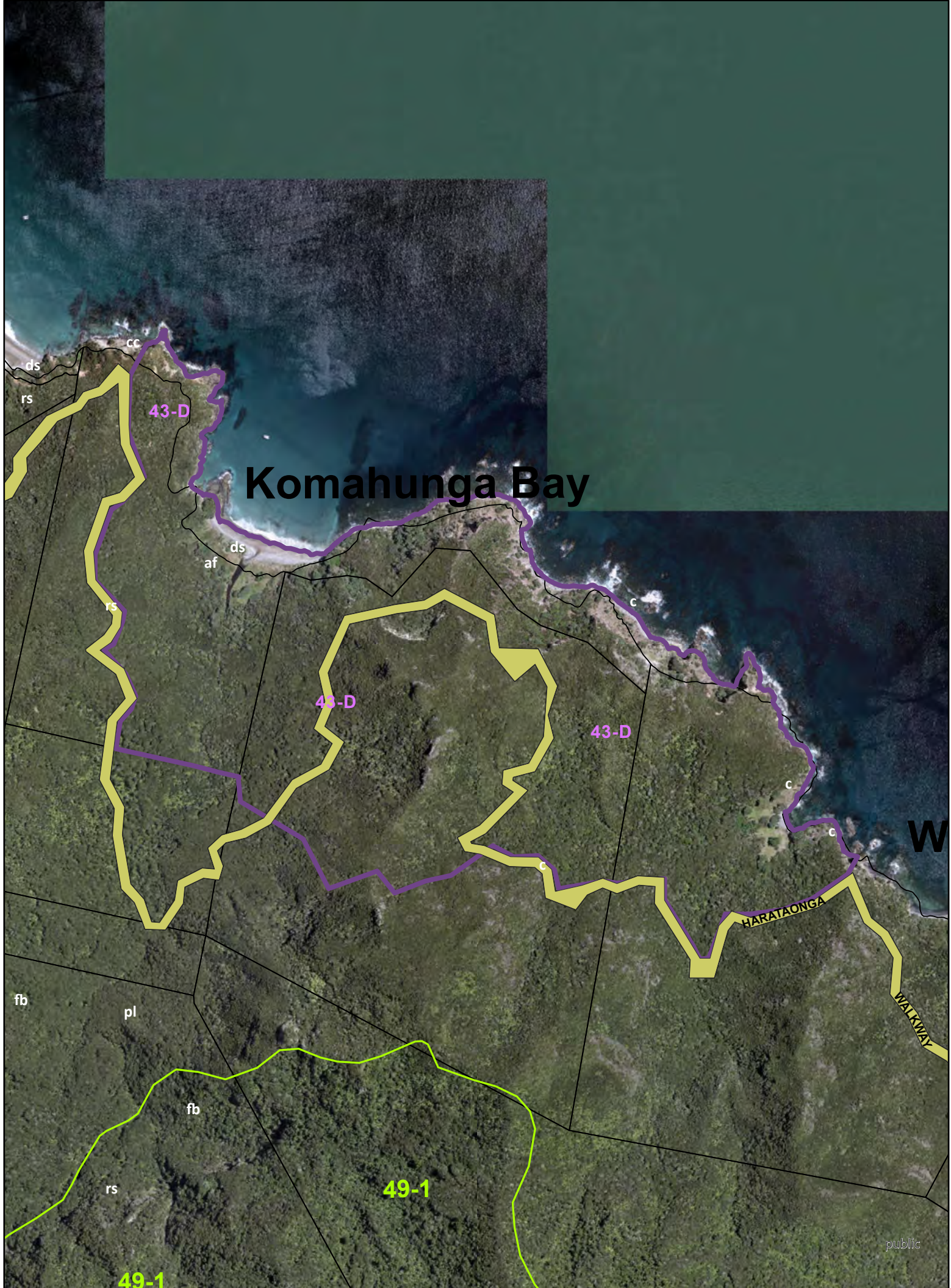
57	58
60	61

Scale:
1:15000 @ A3

Auckland Council District Plan - Hauraki Gulf Islands Section - Operative



Sheet
Map no. 1



Komahunga Bay

43-D

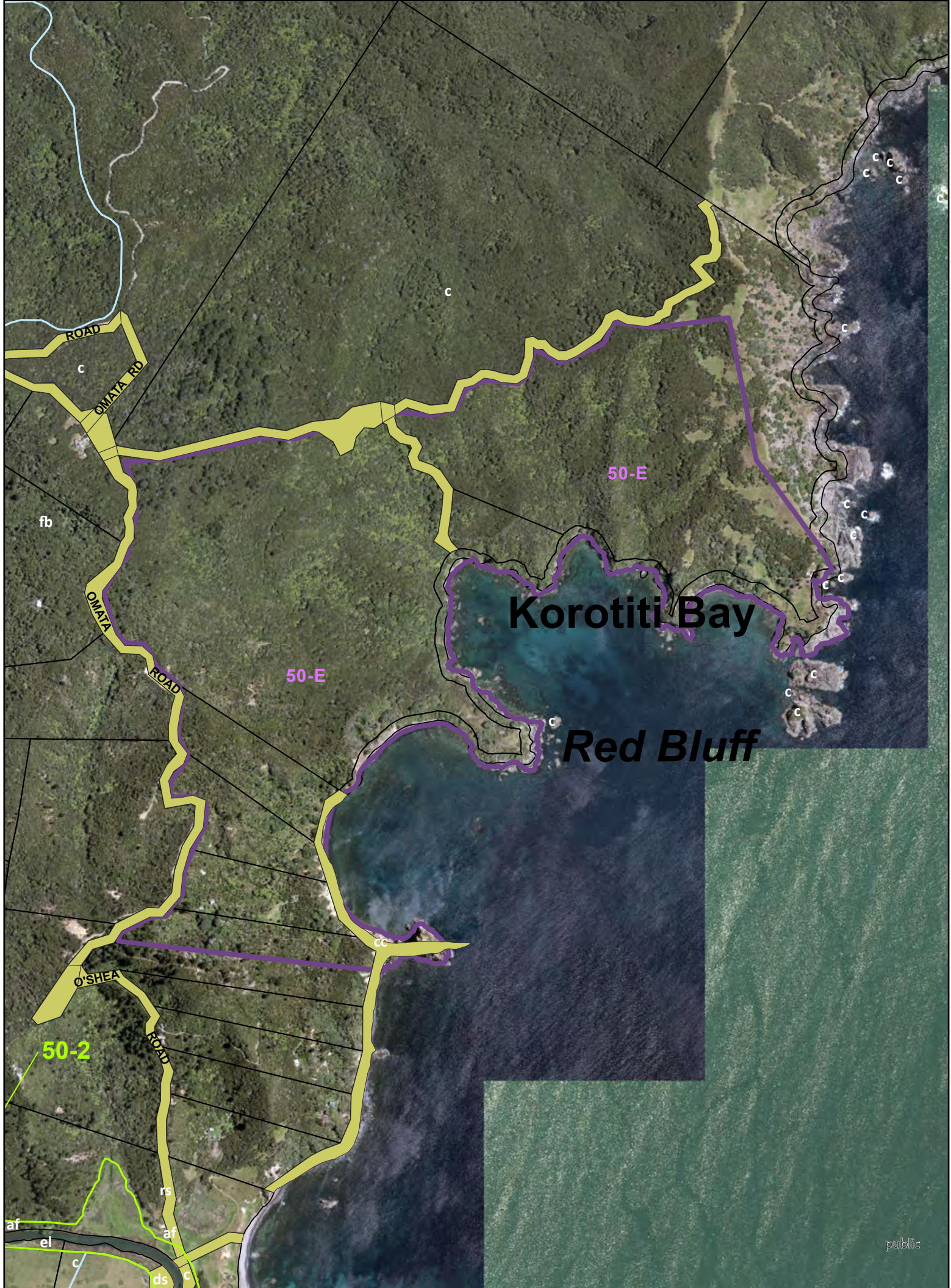
43-D

43-D

49-1

49-1





Korotiti Bay

Red Bluff

50-E

50-E

50-2

